



# Systemwide Transit Study

Special Needs in Transit Advisory Committee

August 24, 2010



# Background

- Last Major Study 10 Years Ago
- TMD, Inc. Approved Consultant
- Constrained and Unconstrained Forecasts
- Short, Intermediate, Long Term Periods



# Integrated Approach

- Join fixed-route and paratransit with Measure M2 projects Transit Initiatives
  - Go Local
  - Metrolink Service Expansion
  - Senior Mobility
- Incorporate SB 375
- Connect Express Bus and Bus Rapid Transit



# Integrated Approach

- Connect with
  - Other Systems
  - Major Employment Centers
  - Major Colleges/Universities
- Efficient, Cost-effective, Sustainable Service Delivery
- Improve Performance Levels



# Project Scope

- Develop Approach and Conduct Research
- Formulate Alternatives
- Make Recommendations
- Create Implementation Plans
- Final Report
- Includes:
  - Transportation Center Site Study: Brea Mall
  - ACCESS Paratransit Alternative Service Evaluation and Recommendations



# Public Outreach

- Collect Input and Feedback
  - Stakeholder Groups
  - Customers
  - Public
- Assist Development of Alternatives
- Help Build Recommendations



# Transit Vision Development

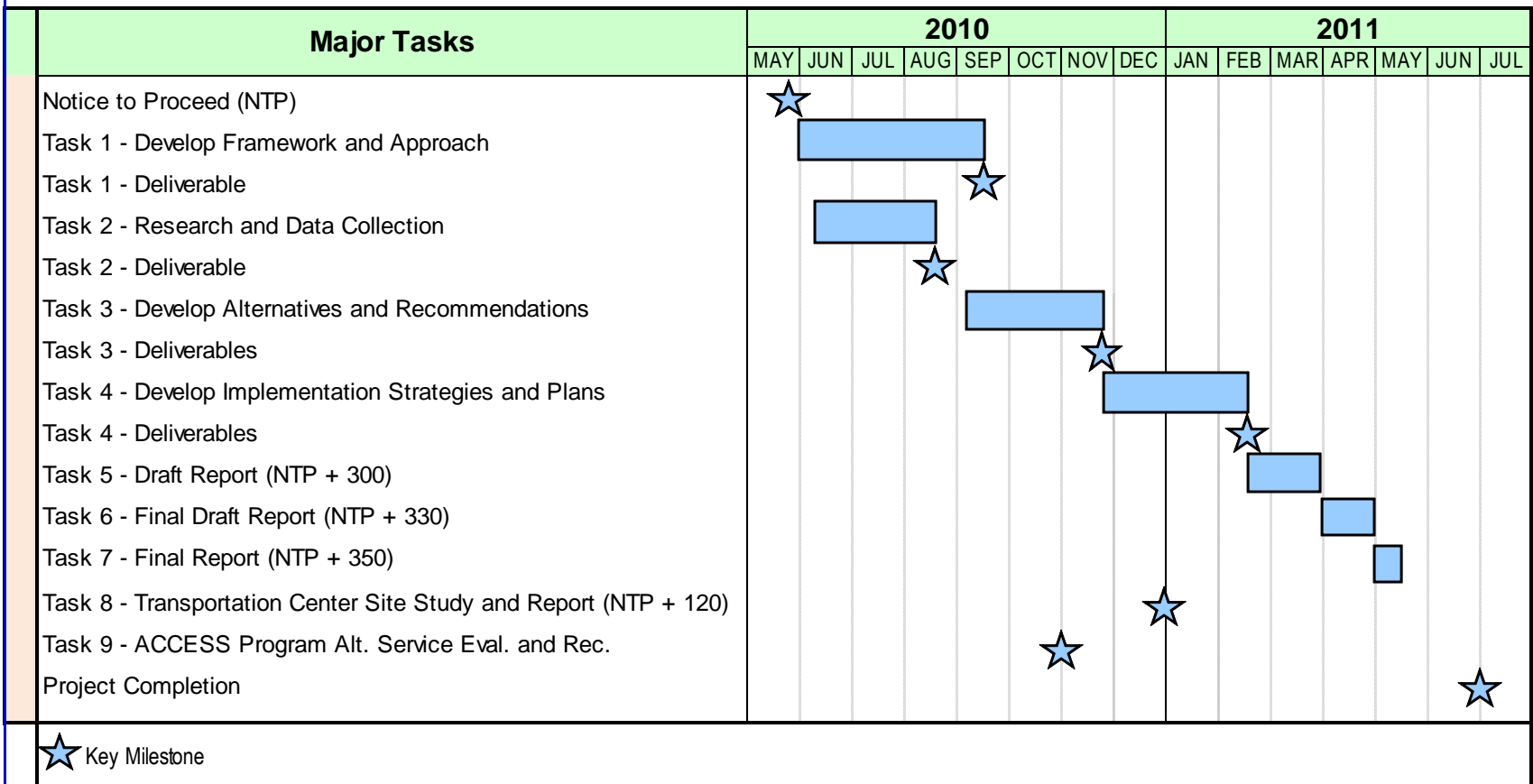
- Primary Guiding Plans
  - OCTA Strategic Plan
  - Comprehensive Business Plan
  - Long Range Transportation Plan
- Visioning Effort
  - Stakeholder Groups
  - Service Delivery
  - Other Transit Properties
  - Service Models and Performance Levels



# Schedule

- Timeframe to Complete Study: 12 months

## Systemwide Transit Study Project Schedule With Key Milestones





# Questions and Comments

- Service area, service hours
- Eligibility certification process
- Trip reservation process
- Service scheduling and delivery
- Fares, including door-to-door
- On-time performance
- Subscription service
- Same-day taxi service
- Partnerships with outside agencies
- Other areas of interest