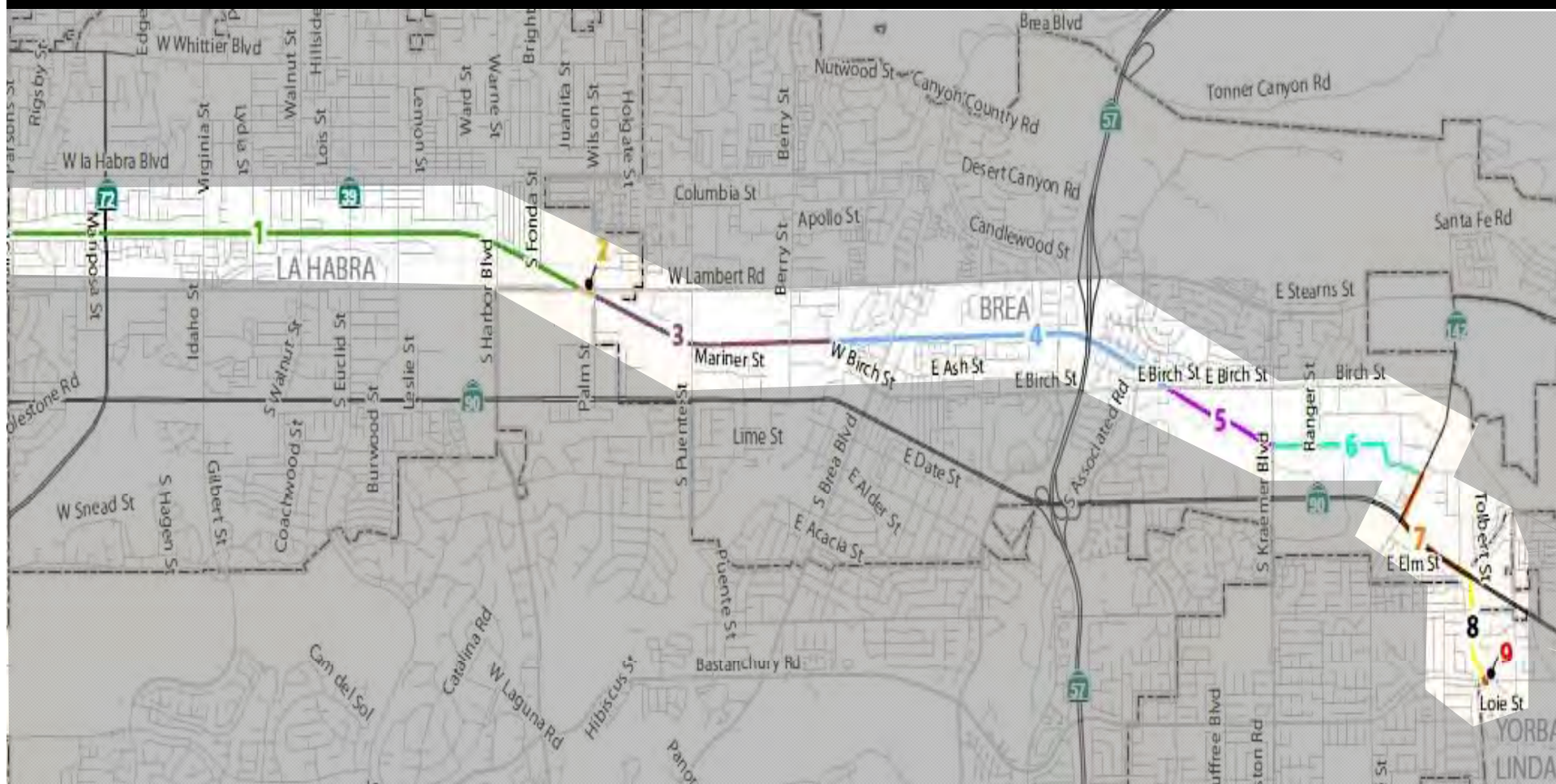


# Union Pacific Right-of-Way Trail



~8.7 miles

active, inactive, on-street, flood channel

5 cities, County, Caltrans





# Segment #1 – La Habra







OFFSET  
10'  
(10' MINIMUM)

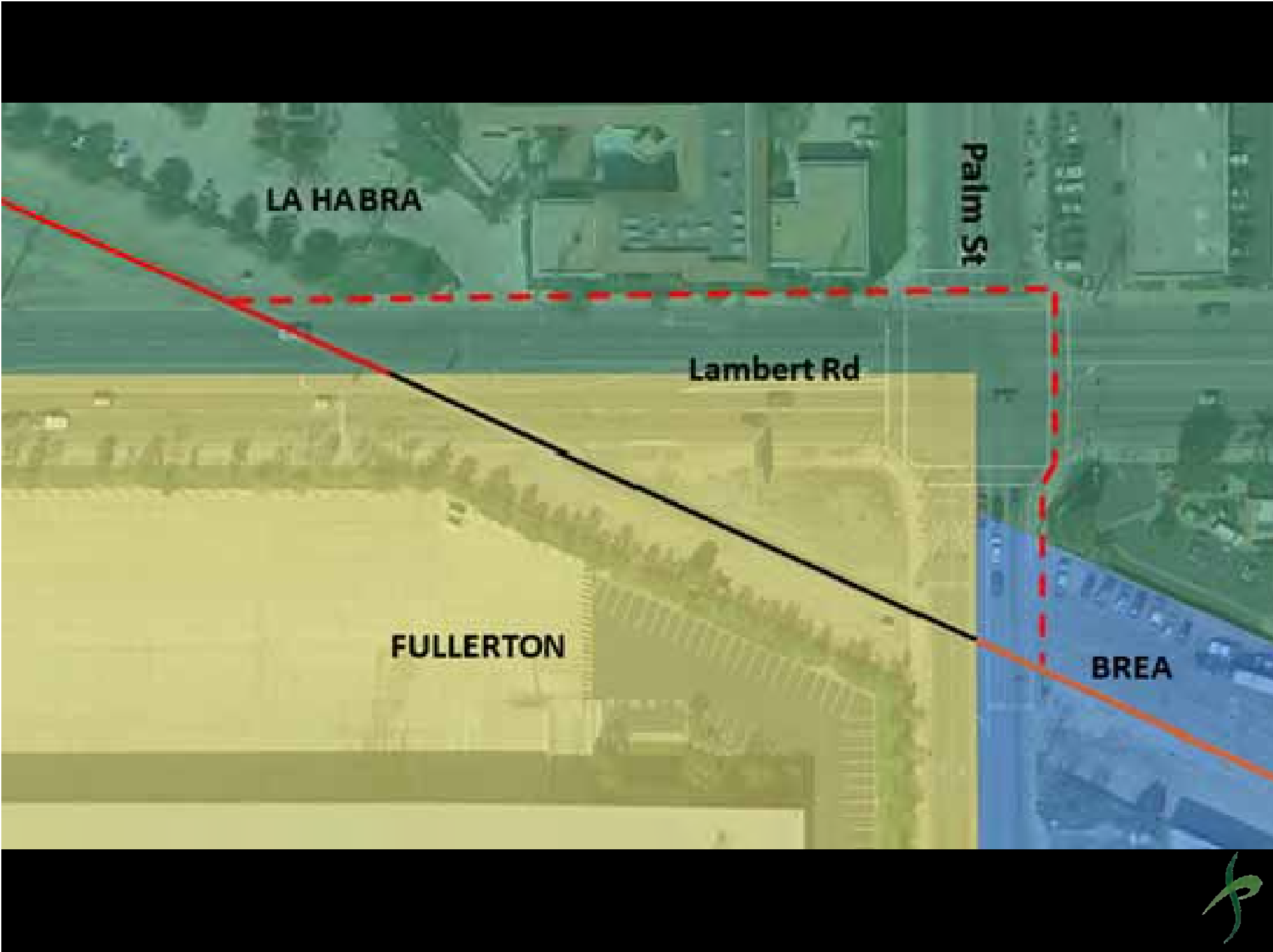
**WARNING**  
**PETROLEUM**  
**PIPELINE**

BEFORE EXCAVATING OR IN EMERGENCY  
CALL 800-368-5848 OR 442-2434

KINDER MORGAN

# Segment #2 – Fullerton







# Segment #3 – Brea Active Rail







# Segment #4 – Brea Inactive Rail







Active rail terminus e/o Berry Street





57 Freeway Undercrossing (from Birch St)





# Segment #5 – Birch Hills Golf Course









# Segment #6 – Loftus Channel / ASMC







Ramp to Loftus Channel levee





Service road along Loftus Channel





# Segment #7 – Arterial Highways



# Segment #8 – Placentia













# Segment #9 – Yorba Linda



# Yorba Linda Recreational Trail

