



The Latest from OCTA

IEOC Line Gets Another Train for Summer

Thinking about going to the beach this summer? Starting July 3 and continuing through October 10, Metrolink is adding trains 857 and 858 with round-trip service on the Inland Empire-Orange County line. Trains 859 and 860 will continue to operate as well. Passengers can board in San Bernardino and Riverside and ride to the beach at San Clemente or Oceanside. Beat the heat and the traffic. Take the family for a comfortable ride on Metrolink to the beach this summer!

Save With Friends and Family 4-Pack

Where will you go this weekend? With the Metrolink Friends and Family 4-Pack, you can take the train from Oceanside to L.A. Union Station on the Orange County Line, or from San Bernardino to Oceanside on the Inland Empire-Orange County Line, or anywhere in between. Four people can ride on Metrolink any Saturday or Sunday for only \$29. You'll get four individual round trip Metrolink tickets at an affordable group rate. Get to the fun and save with the Metrolink Friends and Family 4-Pack!

For more information, go to www.octa.net/FF4P1.



Keep In Touch with e-Communications

In today's fast-paced world, situations changes quickly. From train schedules to upcoming events, you need to know what's happening. Here are several ways to get "e-connected" with OCTA Metrolink.

Get Train Updates with Twitter

Whether at your computer or on your phone, you can get real-time updates with Twitter. For Metrolink general information, follow **@Metrolink**; for the Inland Empire-Orange County Line, follow **@MetrolinkIEOC**; for the Orange County Line, follow **@MetrolinkOC**; for the 91 Line, follow **@Metrolink91**; for information on Orange County events and special promotions, follow **Twitter.com@OCTA_Nora**.

Find Out What's Happening with Facebook

Become an Orange County Metrolink fan on Facebook and you'll get information on current Orange County events, special promotions, upcoming Metrolink service expansion and station improvements. You'll also get helpful tips on how to stay safe around railroad tracks and trains. Log on to **Facebook.com/OCMetrolink** and become a fan today! Be sure to tell your friends about all the things you can find on the Orange County Metrolink Facebook page.

Get Connected by E-Mail

If you travel anywhere in Orange County, OCTA Connections, OCTA's e-newsletter, will keep you up to date on what's happening with Orange County transportation. You can choose the news you want to receive—Metrolink information, OCTA bus rider alerts, 91 Express Lanes information, freeway improvement projects or local street improvements. Sign up for Connections today at www.octa.net/Connections.

Information When You Want It

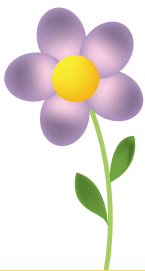
Whether you're at the office, at home or in between, you can get Orange County Metrolink and the latest transportation information any time you want it with OCTA's e-communications program. Try our Twitter posts, check out our Facebook page and get connected with the OCTA Connections online newsletter.



Questions? Comments?

Write to us at the address below, give us a call or contact us online.

Orange County Transportation Authority • Attn: OCTA Metrolink NEWSLINE
550 South Main Street • P.O. Box 14184 • Orange, CA 92863-1584 • (714) 560-OCTA (6282) • www.octa.net



OCTA Metrolink NEWSLINE Orange County Rail Update



IN THIS ISSUE:

- New Railcars Arrive
- Midsummer Classic Comes To Anaheim
- Things To Do
- New Wayfinding Signs
- Improving The Tustin Station
- IEOC Gets Another Line for Summer
- Save With Friends and Family 4-Pack
- Keep In Touch With e-Communications

New Railcars Arrive

Metrolink's first two Crash Energy Management (CEM)-enabled cars arrived from South Korea where they were manufactured. The two cars are the first of 117 that Metrolink will put into service later this year after a rigorous testing program. Metrolink will be the first commuter rail system in the nation to adopt these state-of-the-art cab and passenger cars.

The new cars have a unique set of design features to enhance passenger and crew safety – while also increasing passenger comfort and demonstrating the agency's commitment to environmental sustainability. These include:

- Crush zones that absorb impact at each end of the cars
- Enhanced bumpers to absorb, balance and dissipate force from an impact
- Couplers that absorb energy and help to keep cars in line and upright
- Work tables designed to dissipate the force of a collision
- Reconfigured seat placement in each car
- Comfortable seats, with higher seat backs
- Illuminated and marked pathways and exits
- An elevated train operator compartment
- Pre-installed inward and outward facing video cameras
- Stainless steel exterior

New cars will continue to arrive over the next year from the Hyundai Rotem manufacturing plant in South Korea. The new fleet is expected to arrive in shipments of approximately ten cars per month and will be completed by spring 2011.



Midsummer Classic Comes to Anaheim

The current baseball season is heading toward the halfway mark, and that means it's almost time for the "Midsummer Classic." If you're a regular fan, you know we're talking about the All-Star Game.

The 81st annual All-Star Game will be played at Angel Stadium on Tuesday, July 13, 2010. But the fun will start Friday, July 9 with the All-Star FanFest. It's the world's largest baseball fan event, with an interactive baseball theme park, exhibits, major league clinics, free autograph sessions with Angels legends and Hall of Fame members, memorabilia and lots more for fans both young and old.

Make plans now to attend the All-Star FanFest and the 81st All-Star Game at Angel Stadium in Anaheim. Orange County Metrolink makes it easy for you to get there by train. For more information, visit www.octa.net/specialtrain.



Become a fan on Facebook:
www.facebook.com/ocmetrolink



METROLINK

Orange County Metrolink service funded by Measure M,
your half-cent sales tax.

THINGS TO DO IN ORANGE COUNTY WITH METROLINK WEEKENDS

Wondering what to do next weekend? Next month? Here's a preview of upcoming events taking place around Orange County. With Metrolink Weekends service, all of these events are just a comfortable train ride away. So give your car the weekend off and avoid parking hassles with Metrolink Weekends.

June

5 U.S. Open Elite Tae Kwon Do Championship
Oceanside Pier Amphitheater
9 a.m. - 5 p.m.
Within 6 blocks of Oceanside Station
(760) 724-5659



8 - 12 Race Across America 2010
Oceanside Pier Amphitheater
12 p.m.
Within 6 blocks of Oceanside Station
www.raceacrossamerica.org
(866) 460-4288

12 Optricks Day
Discovery Science Center, Orange
10 a.m. - 5 p.m.
From Orange Station, take OCTA Bus Route 53 South
www.discoverycube.org
(714) 542-2823

13 San Clemente Car Show
Ave. Del Mar, San Clemente
10 a.m. - 3 p.m.
Within walking distance of San Clemente Pier Station
www.villagesanclemente.org
(949) 498-4538



July

9 - 13 Major League Baseball All-Star Summer 2010 FanFest
Anaheim Convention Center
9 a.m. - 8 p.m.
From Anaheim Metrolink Station, walk to Katella Street and take Bus Route 50 West
www.allstargame.com

10 Living History Day
Mission San Juan Capistrano
11 a.m. - 2 p.m.
Within walking distance of San Juan Capistrano Station
www.missionsjc.com
(949) 234-1315



11 Taco Bell All-Star Sunday
At Angel Stadium
Featuring XM All-Star Futures Game, Taco Bell All-Star Legends, and Celebrity Softball Game
All-Star Game Charity 5K and Fun Run

17 & 18 San Clemente Ocean Festival
San Clemente Pier
Within walking distance of San Clemente Pier Station
www.oceanfestival.org
(949) 440-6141

August

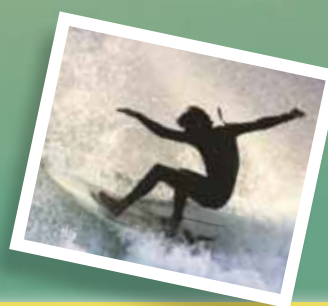
8 San Clemente Street Festival
Ave. Del Mar, San Clemente
9 a.m. - 7 p.m.
Within walking distance of San Clemente Pier Station
www.scchamber.com
(949) 492-1131

13-15 26th Annual Oceanside Longboard Surfing Club Contest & Beach Festival
Oceanside Pier Amphitheater & South Pier Beach
6 a.m. - 5 p.m.
Within 6 blocks of Oceanside station
(760) 931-0301

14 Living History Day
Mission San Juan Capistrano
11 a.m. - 2 p.m.
Within walking distance of San Juan Capistrano Station
www.missionsjc.com
(949) 234-1315

21 & 22 Arts and Crafts Fair
Ave. Del Mar, San Clemente
10 a.m. - 5 p.m.
Within walking distance of San Clemente Pier Station
www.scartgallery.com
(949) 388-6208

21 & 22 34th Annual World Bodysurfing Championships
Oceanside Pier
6 a.m. - 5 p.m.
Within 6 blocks of Oceanside Station
(760) 802-7452



New Wayfinding Signs

OCTA's wayfinding sign program is now being implemented throughout Orange County. The new signs will guide passengers from freeways and major streets to Orange County rail stations.

The design of the signs was developed by OCTA and coordinated with Caltrans and each Orange County station city. OCTA produced the signs and distributed them to each city, which will be responsible for the installation of the signs on city streets and freeway off-ramps and the maintenance of the signs.



The new wayfinding signs are green, white and black, are reflective, and are covered with an anti-graffiti material approved by Caltrans. The OCTA logo is on every sign and the city name is on the signs requested by Anaheim, Fullerton, and Irvine.

The cities participating in the program include: Anaheim, Fullerton, Irvine, Laguna Niguel, Mission Viejo, Orange, San Juan Capistrano, Santa Ana, and Tustin.

Look for the new wayfinding signs on your next trip to the Metrolink station.



Improving The Tustin Station

As the Metrolink Service Expansion Program (MSEP) continues to move forward, improvements are planned at various Metrolink stations between Fullerton and Laguna Niguel/Mission Viejo to accommodate the additional service. Two major projects in Tustin will enhance the station experience for commuters – a new parking structure and the Tustin Wye Pedestrian Walkway. Both improvements will allow commuters easier and safer access to the station area and future ridership growth.

New Parking Structure

Watry Design, Inc. was selected to design the 5-story, 825-space parking structure at the Tustin Metrolink station. The parking structure will be built on the existing surface parking lot and provide over 500 additional parking spaces. Final plans are in the works and construction contract is anticipated to be in place in mid-2010, with a 12-month construction schedule. The new parking structure should be open for business mid-2011 to serve the 2010 first phase implementation of the MSEP.



Building A Better Walkway

Construction began in February on a pedestrian walkway to connect the existing walkway along Dow Avenue with the Metrolink station platform. The entire length of the walkway is approximately 640 feet and is in compliance with the Americans with Disabilities Act. Construction includes fencing, landscaping, overhead lighting, as well as bike lockers and bike racks near the platform. The next time you're at the Tustin Station, check out the recently completed pedestrian walkway.

For additional updates on these two projects, please visit OCTA's website at: www.octa.net/metrolink.aspx

