



Environmental Mitigation Program

What is the Environmental Mitigation Program?

A minimum of 5% of the M2 freeway program budget will be available, subject to a master agreement, to provide for comprehensive, rather than piecemeal, mitigation of the environmental impacts of freeway improvements



Benefits to Orange County

- Provide habitat protection, wildlife corridors and resource preservation
- Result in streamlined project approvals for the freeway program (endangered species, wetlands, waters, etc.)
- Expedite freeway projects through planning, design and construction phases
 - Considers aesthetic, historic and environmental impacts on nearby properties and communities



M2 Mitigation Program Activities

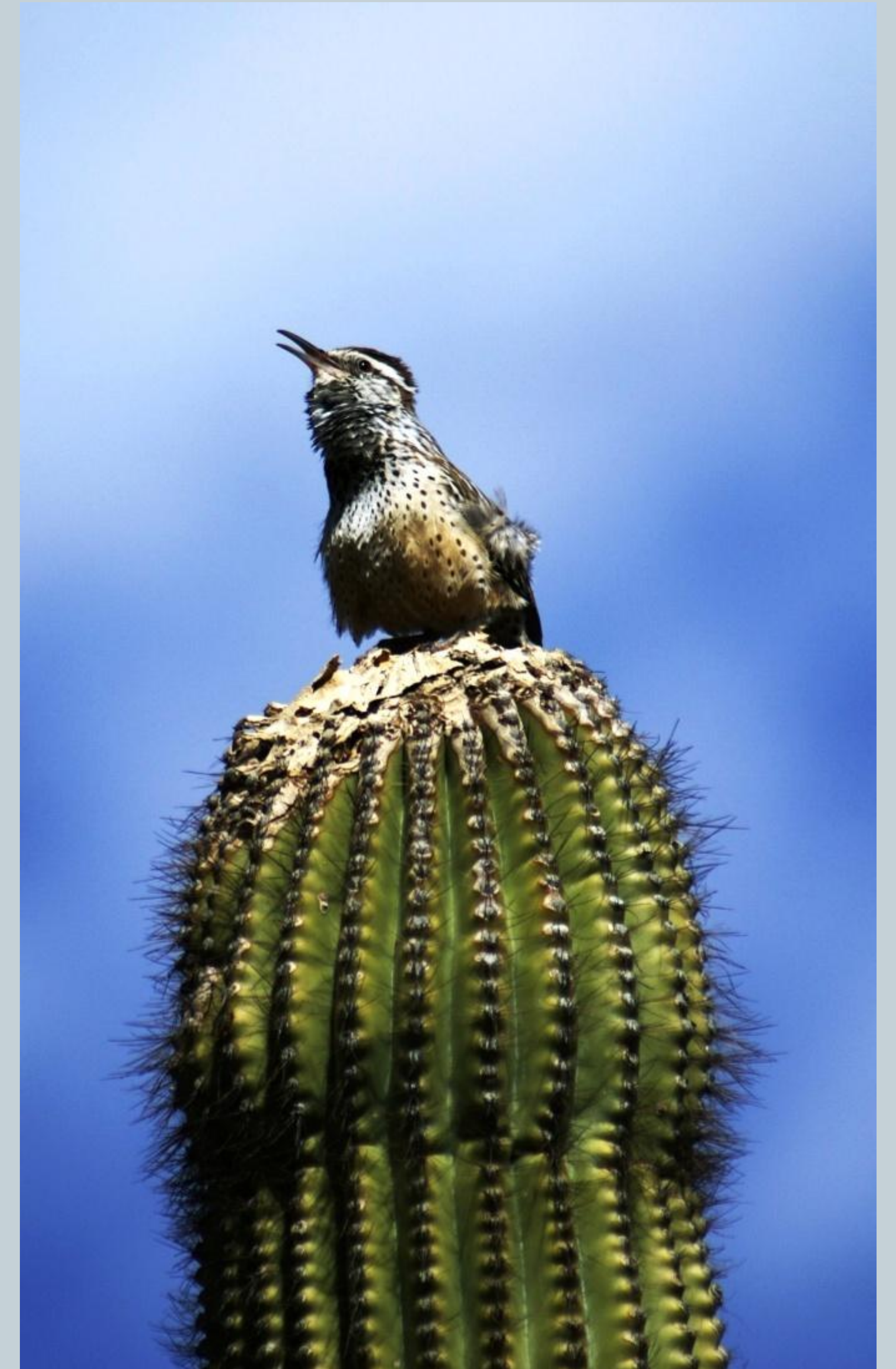
- **2008** – Public outreach to land owners interested in offering property for potential acquisition and restoration
 - Reviewed and selected properties based on eligibility criteria
 - EAP enabled early acquisition and restoration activities
- **2009** – Conservation Assessment identifies priorities
- **2010/11** – Call for projects for land acquisition
- **2011** – Call for projects for restoration activities





What is a Natural Community Conservation Plan (NCCP) and a Habitat Conservation Plan (HCP)?

- A long-term regional species and natural community conservation program approved by state and federal wildlife regulatory agencies CDFG and USFWS
- If the NCCP/HCP is successfully and continually implemented, then CDFG and USFWS issue permits to allow limited impacts to protected species for construction projects
- An NCCP/HCP is a win-win for OCTA Project Implementation and Environmental Conservation
 - Streamlines the permitting process under state and federal endangered species acts
 - Results in more efficient and effective use of mitigation funding





Components of the NCCP/HCP

- Program goal
 - Streamlines permitting processes of 13 M2 freeway projects for 30-year duration
- Geographic coverage
 - Orange County - 798 square miles (approximately 510,720 acres)
- Species covered
 - Approximately 22 endangered, threatened, or otherwise sensitive species
- Biological goals and objectives
 - Conserve, enhance, and/or restore populations and habitat of the 22 covered species
 - Adaptively manage species and natural communities in perpetuity
- Impacts on species
 - Quantified using freeway project footprints, species distribution models, and known observed locations of species



Covered Species

Currently, 22 species are proposed for coverage under the Plan. Species may be added or deleted during the course of the Plan development based on further analysis, new information, agency consultation, and public comment.

Amphibians and Reptiles

- Southwestern Pacific Pond Turtle
- San Diego Coast Horned Lizard
- Orange Throated Whiptail Lizard
- Red Diamond Rattlesnake

Birds

- Coastal Cactus Wren
- Coastal CA Gnatcatcher
- Rufous-Crowned Sparrow
- Flycatcher
- Least Bell's Vireo

Fish

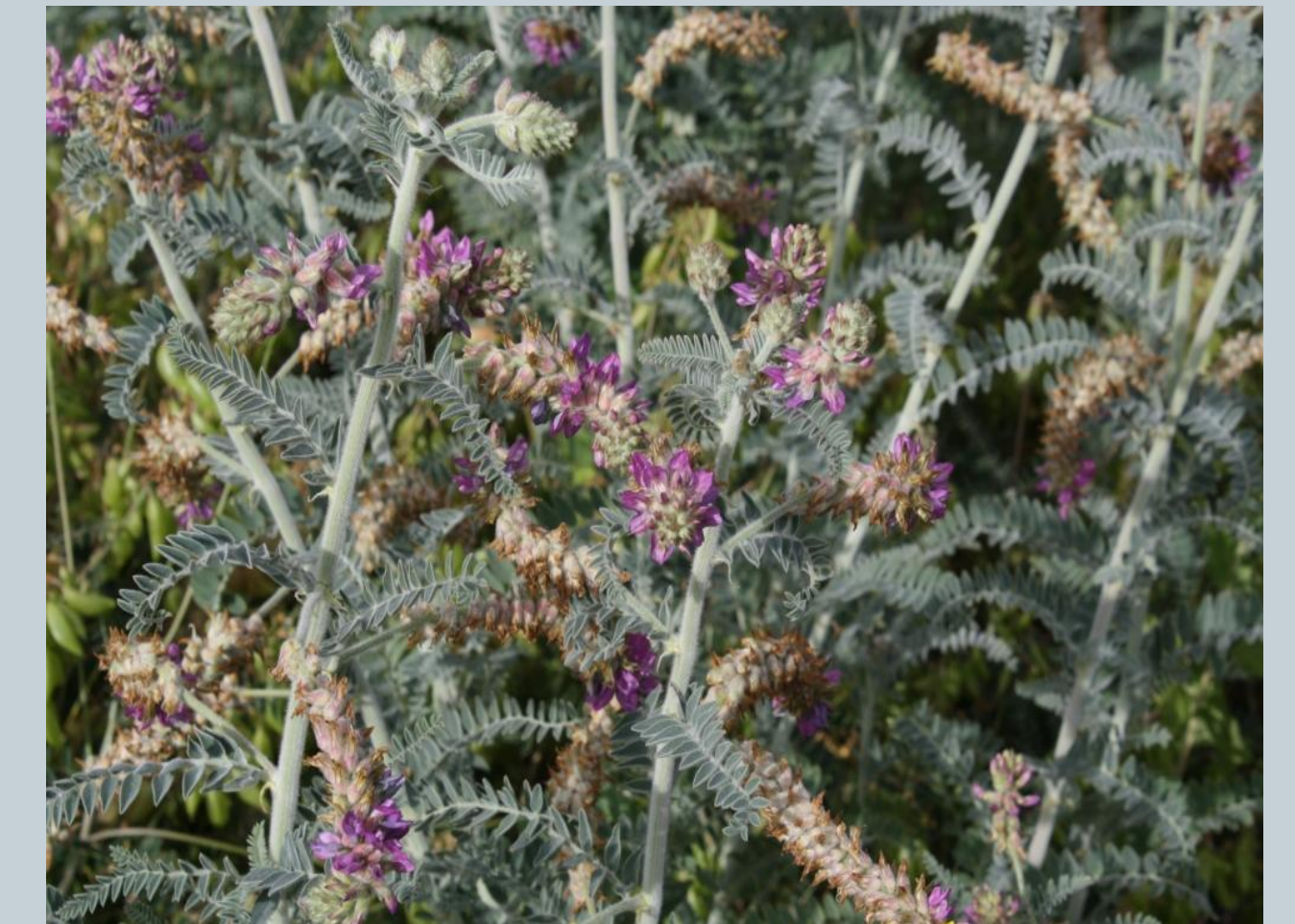
- Arroyo Chub
- Santa Ana Sucker

Mammals

- Bobcat
- Mountain Lion
- Pallid bat
- Small-footed myotis
- Long-eared myotis
- Yuma myotis

Plants

- Braunton's Milk-Vetch
- Coulter's Matilija Poppy
- Intermediate Mariposa Lily
- Many Stemmed Dudleya
- Southern Tarplant





State & Federal Environmental Review

Purpose:

- Study and evaluate potential environmental impacts resulting from NCCP/HCP implementation
- Identify mitigation for significant impacts
- Follow state and federal environmental laws
 - California Environmental Quality Act
 - National Environmental Policy Act

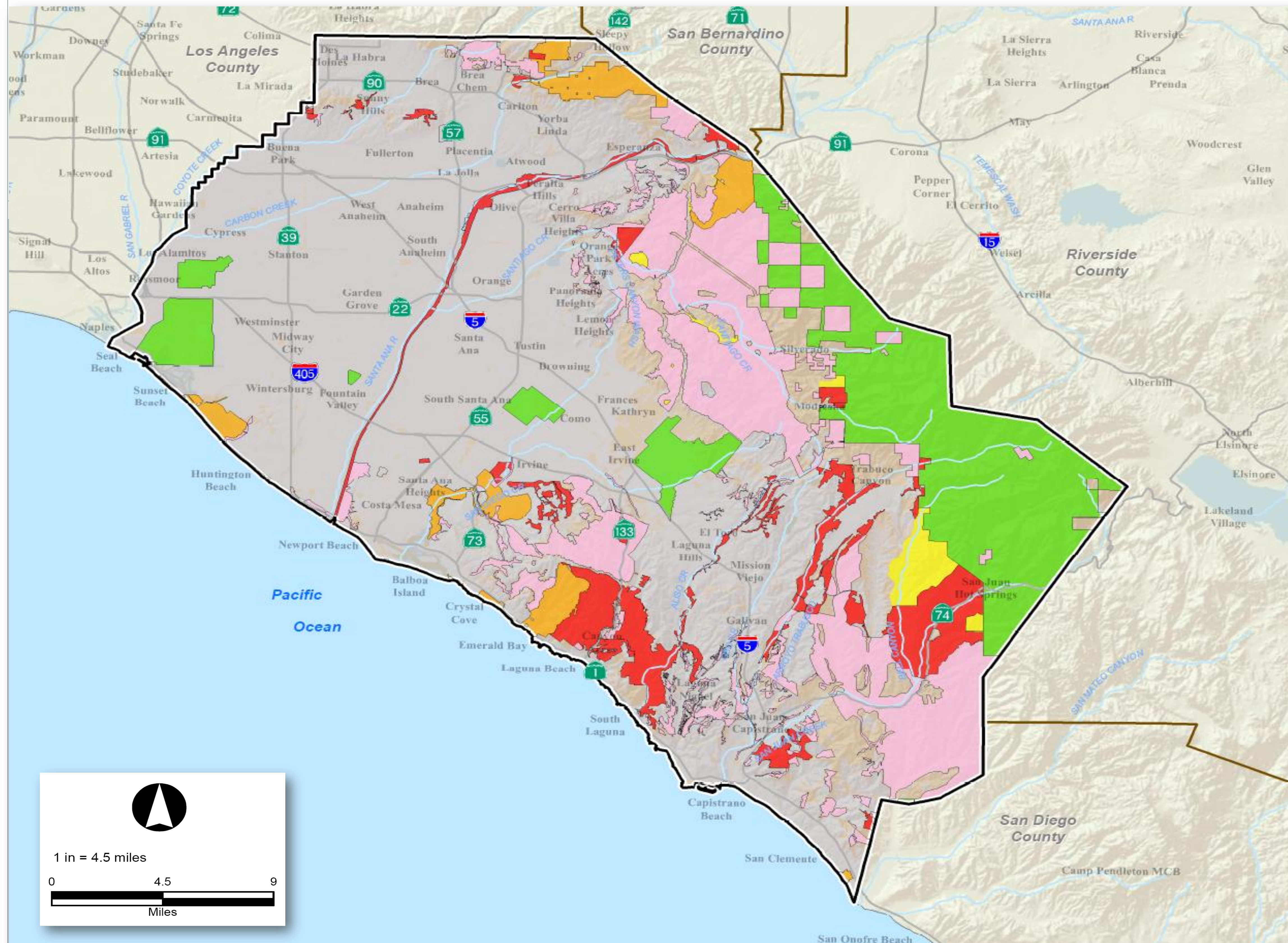


Examine potential environmental benefits and impacts of the project resulting from the following environmental factors:

- Agricultural Resources
- Air Quality & Climate Change
- Biological Resources
- Cultural Resources
- Geology, Soils, & Mineral Resources
- Hydrology & Water Quality
- Land Use Planning & Consistency
- Noise
- Population & Housing
- Public Services & Utilities
- Recreation & Open Space
- Transportation
- Other environmental factors as identified by OCTA, CDFG and USFWS through the scoping process



Protected Lands



Protected Lands

Legend

Open Space

Developed

Ownership

Federal

State

Local

Private

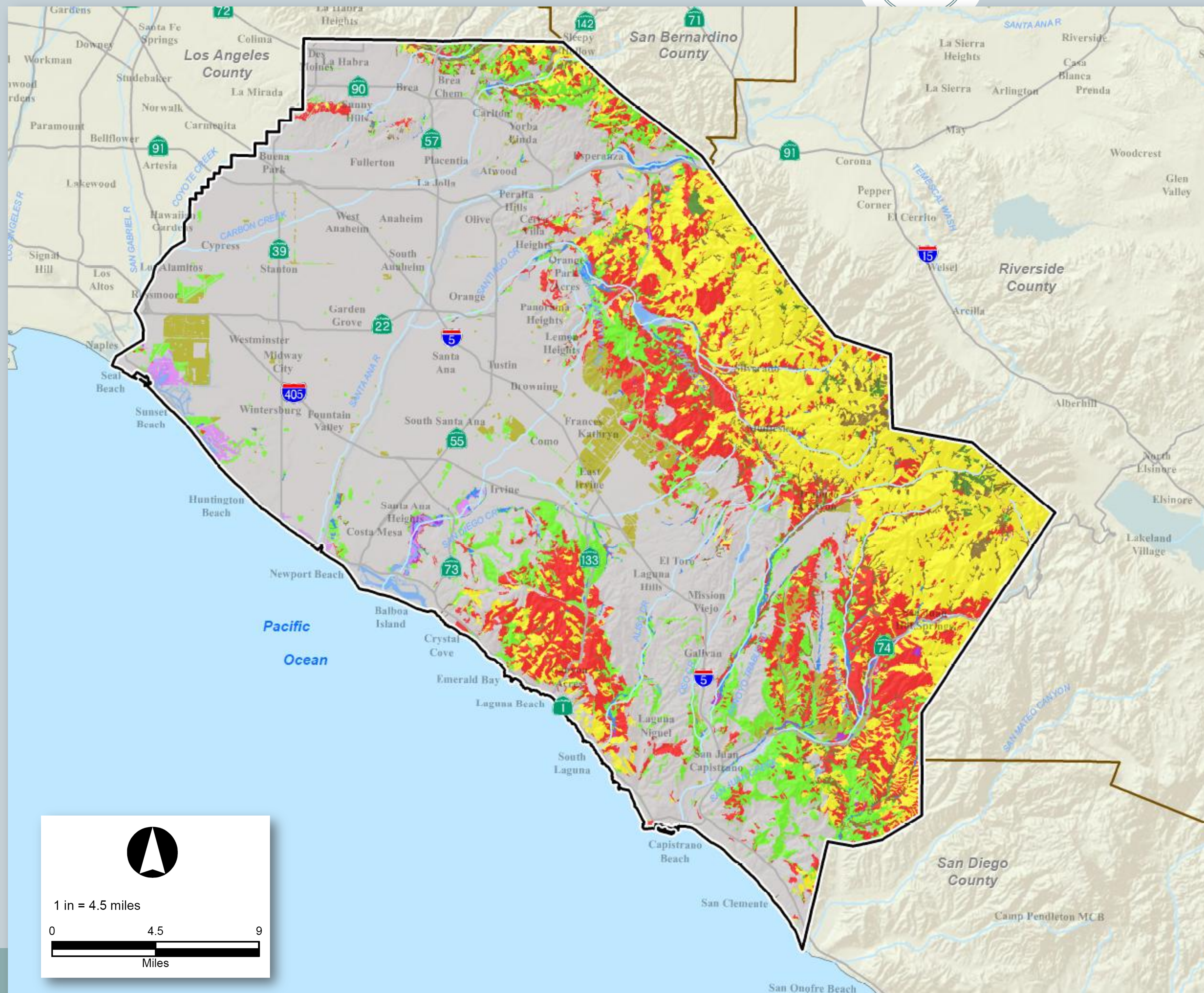
other

Source: CBI 2009

Date: Nov 18, 2010



Vegetation Communities



Vegetation Communities

Legend

- Scrub
- Chaparral
- Grassland
- Wet Meadows/Marsh
- Riparian
- Woodland
- Coniferous Forest
- Water
- Barren
- Agriculture
- Developed

Source: CBI 2009, updated by
Technology Associates 2010



 Open Space
 Developed



Get Involved!

Tonight's Scoping Meeting is your chance to provide feedback on what should be studied during the environmental review of the project

- Please provide comments on the range of issues and type of information that should be considered in the studies
- If you have any questions about the project, please refer to the boards or powerpoint or ask any staff member
- Please turn in comments no later than January 10, 2011
- Your input is very important to us!

