



ORANGE COUNTY TRANSPORTATION AUTHORITY

Measure M2 Sales Tax Forecast

PowerPoint



Measure M2 Sales Tax Forecast

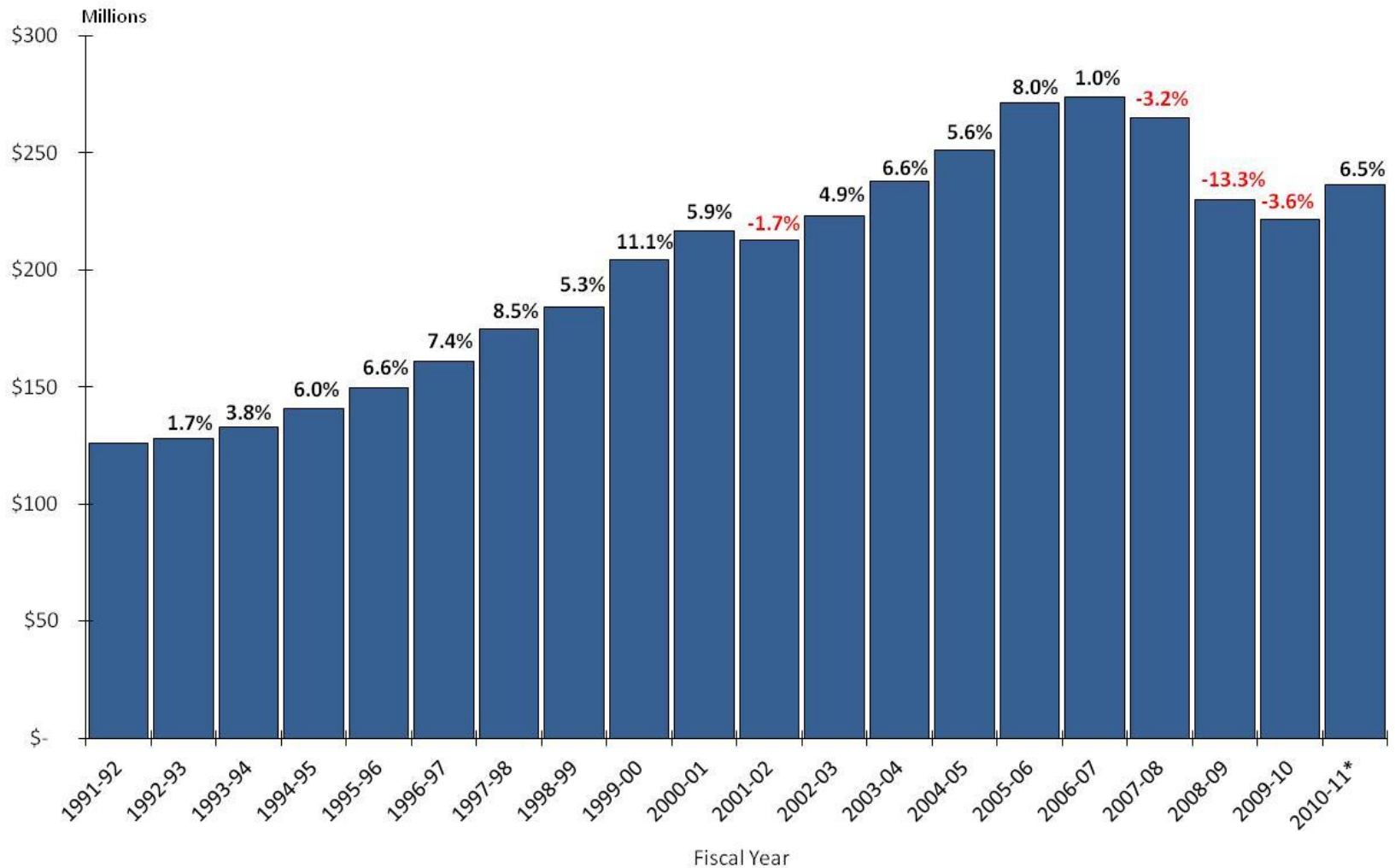


Background

- Chapman University Forecast
 - Since inception of Measure M (M1) in 1991

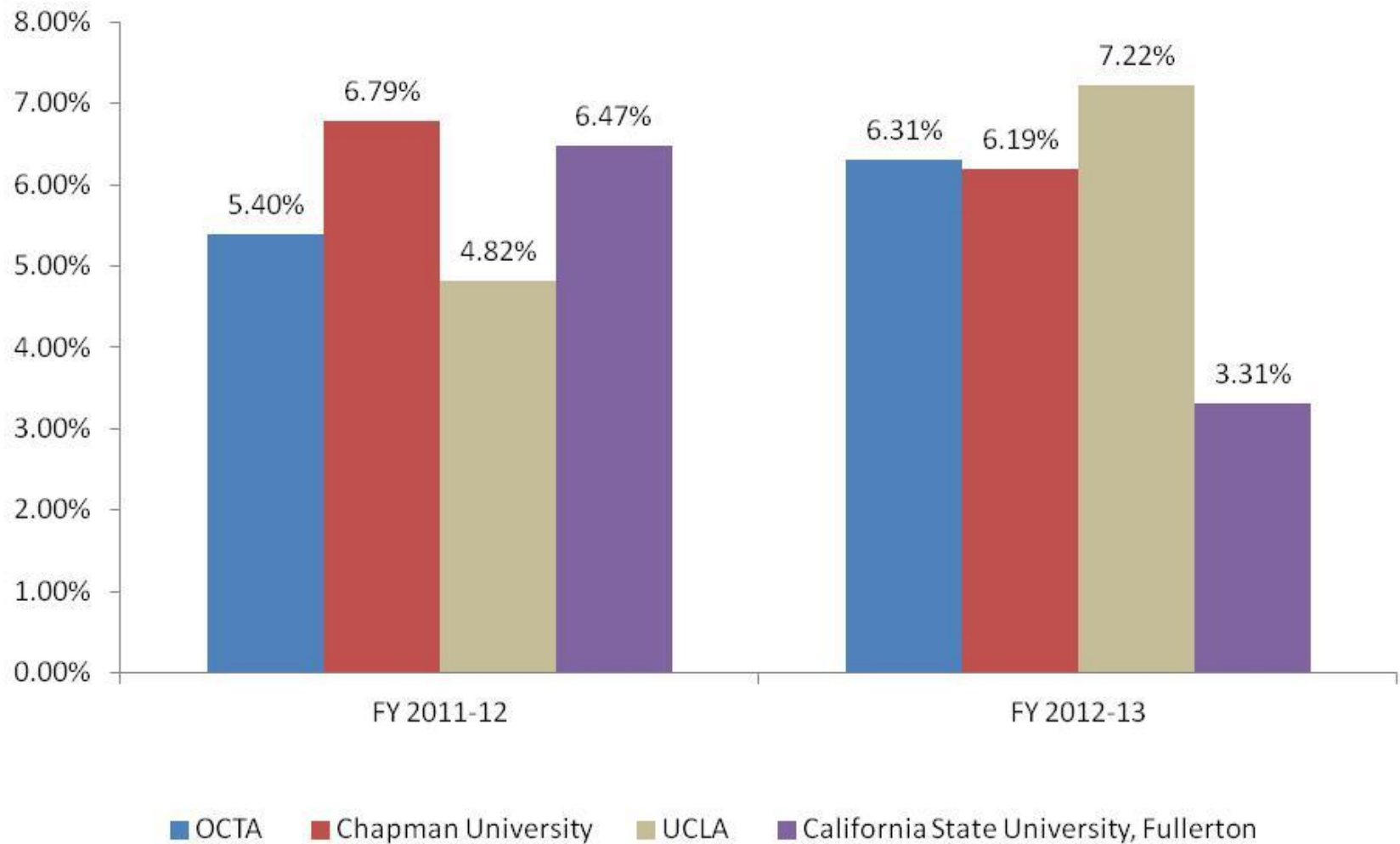
- Three University Forecast
 - Since development of Measure M2 (M2)
 - Average of three forecasts
 - Chapman University
 - California State University, Fullerton
 - UCLA – Anderson Forecast

Historical M1 Sales Tax Revenues

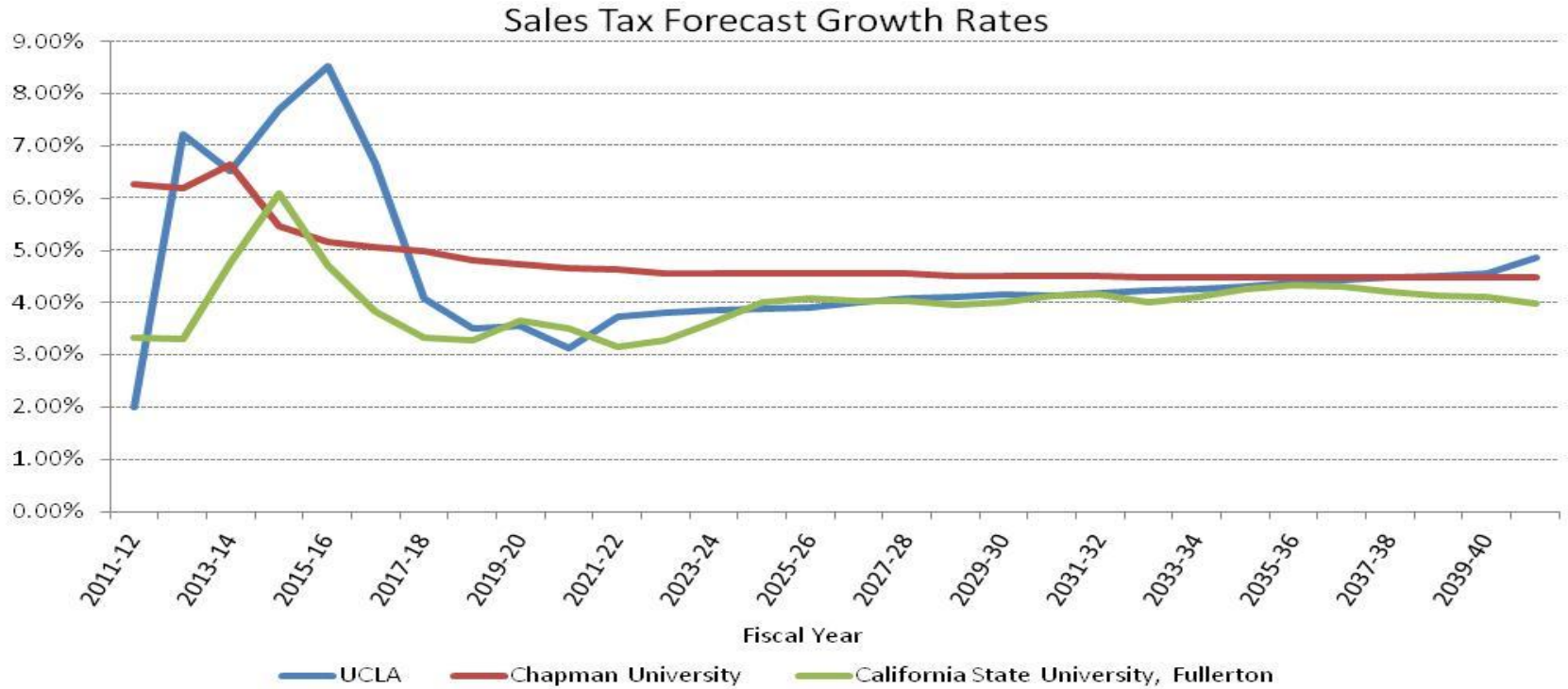


*FY 2010-11 represents a combination of Measure M1 (three quarters of the year) and Measure M2 (one quarter of the year) sales tax revenues

Growth Rate Projections for FY 2011-12 and FY 2012-13



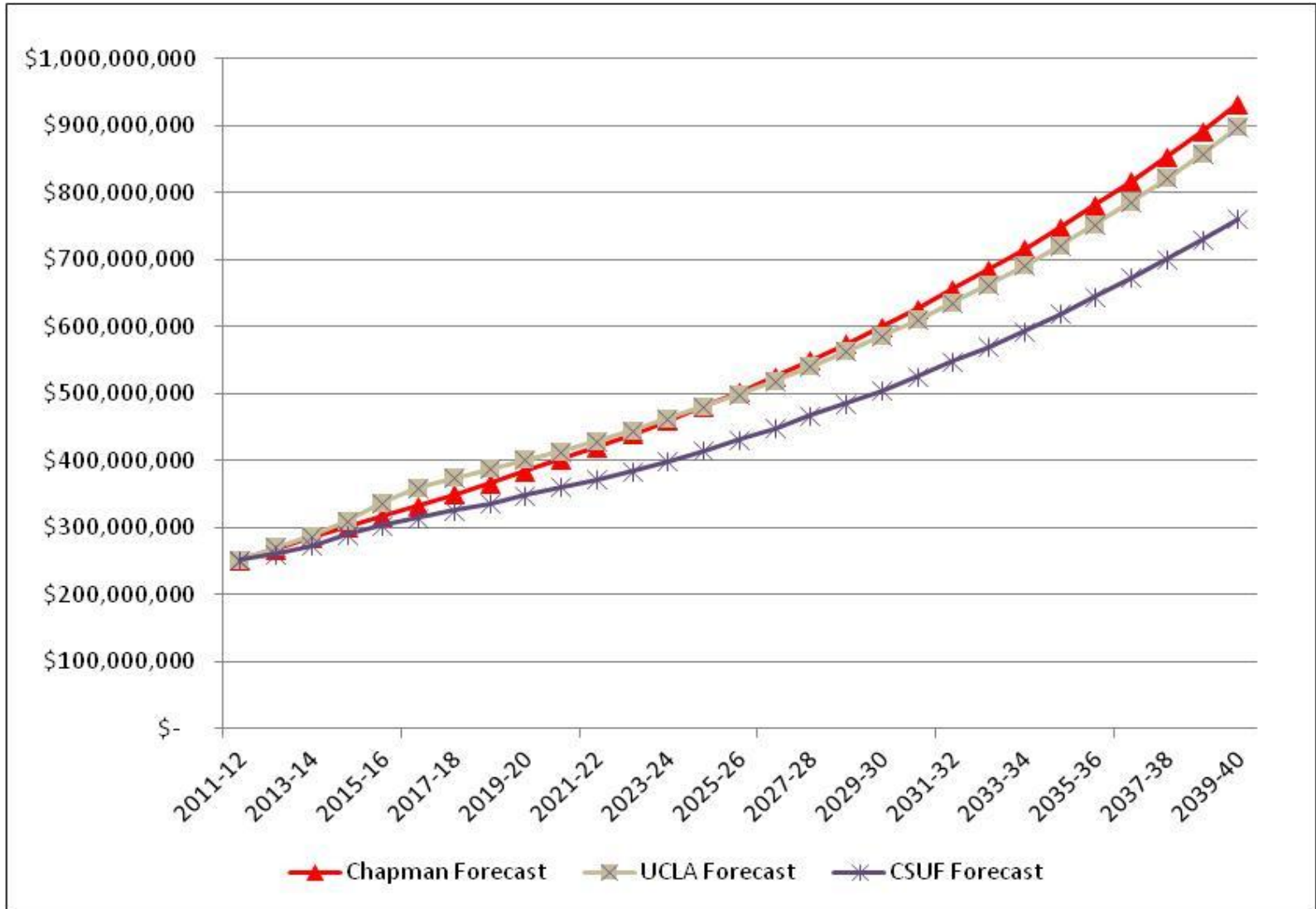
M2 Forecast By University



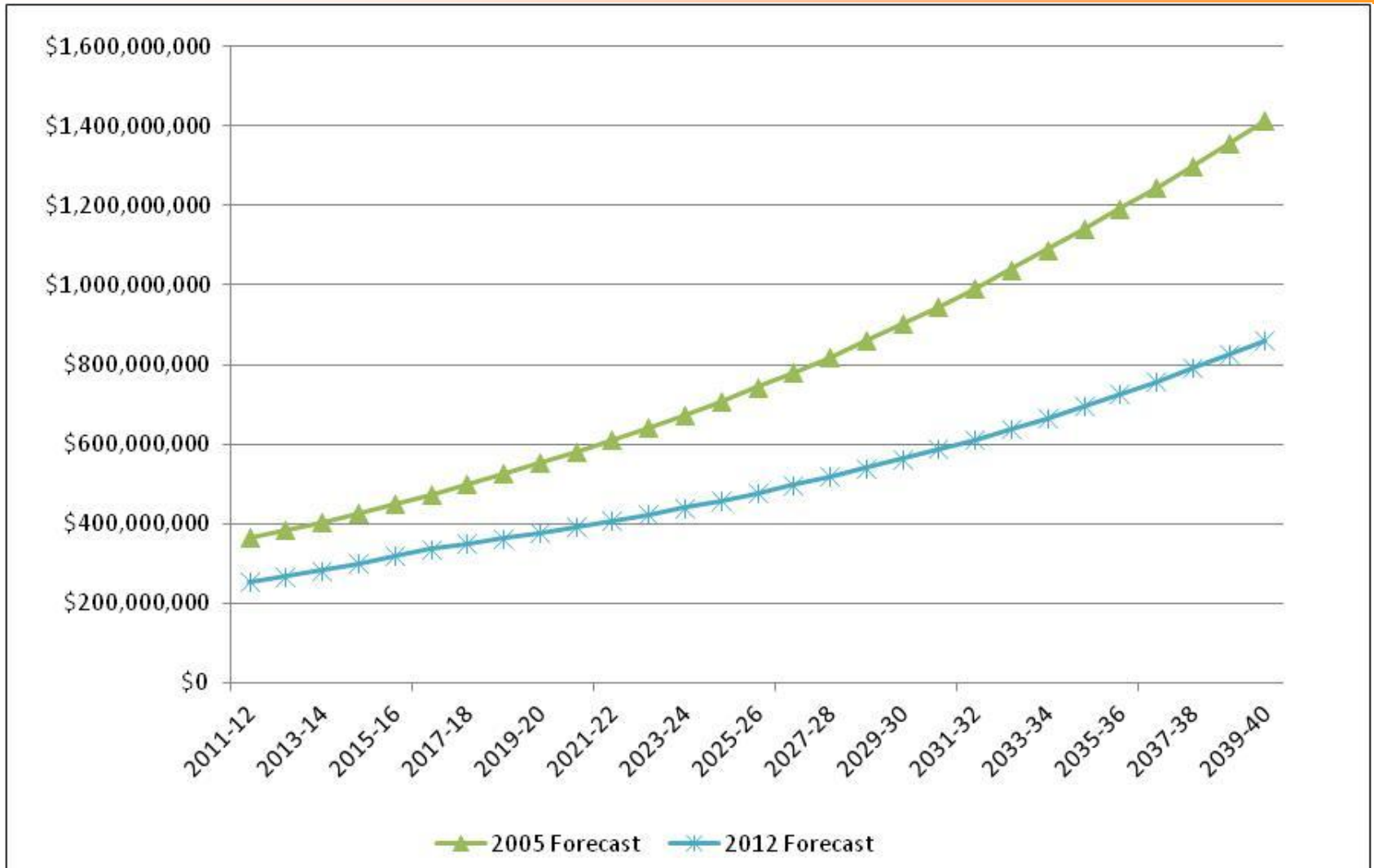
	1-Year Rate FY 2013	Average 3-Year Rate FY 2013-2015	Average 5-Year Rate FY 2013-2017	Average 10-Year Rate FY 2013-2022	Average 30-Year Rate FY 2012-2041
UCLA	7.22%	7.15%	7.33%	5.47%	4.56%
Chapman University	6.19%	6.10%	5.71%	5.24%	4.82%
California State University, Fullerton	3.31%	4.72%	4.54%	3.96%	3.99%



Spring 2012 Forecasts



Forecast Comparison



M2 Forecast Comparison

