

COASTAL RAIL EMERGENCY PROJECTS

The Orange County Transportation Authority, in coordination with Metrolink, is taking emergency action to stabilize the rail line in north San Clemente. The work is necessary to address urgent threats from slope and beach erosion and to protect the community, rail passengers and overall rail operations.



Construction Updates

Crews continue to make progress in the ongoing emergency work to stabilize the coastal rail line in San Clemente.

Contractors will continue to work through early June, from 5 a.m. to 8 p.m. seven days a week, including through Memorial Day weekend. During this time, passenger rail service is suspended through San Clemente. For passenger rail service details, visit: www.metrolinktrains.com/service-updates and www.pacificsurfliner.com/alerts.

Riprap Repair

Crews are continuing work to strategically place large boulders, also known as riprap, in Project Areas 1 and 2. Since construction began in late April, more than 4,200 tons of riprap have been placed next to the track to repair and replace previous riprap.

The construction team, in coordination with California Coastal Commission staff, determined that the work area needs to be extended to the area between Project Areas 1 and 2 to safely and effectively protect the entire rail line through that segment. The modification approved by the Coastal Commission will add a 530-foot-long

segment of riprap slope repair and reinforcement (referred to as Area 1a). This work is not expected to affect the overall timeline for the repairs, still anticipated for completion in early June.

Sand Nourishment

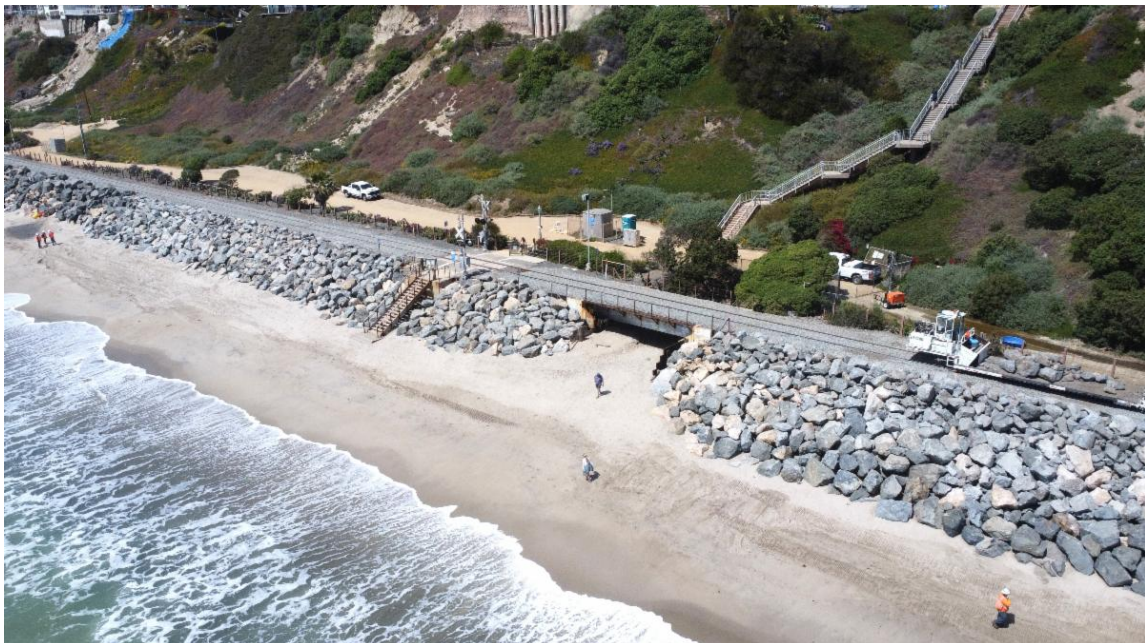
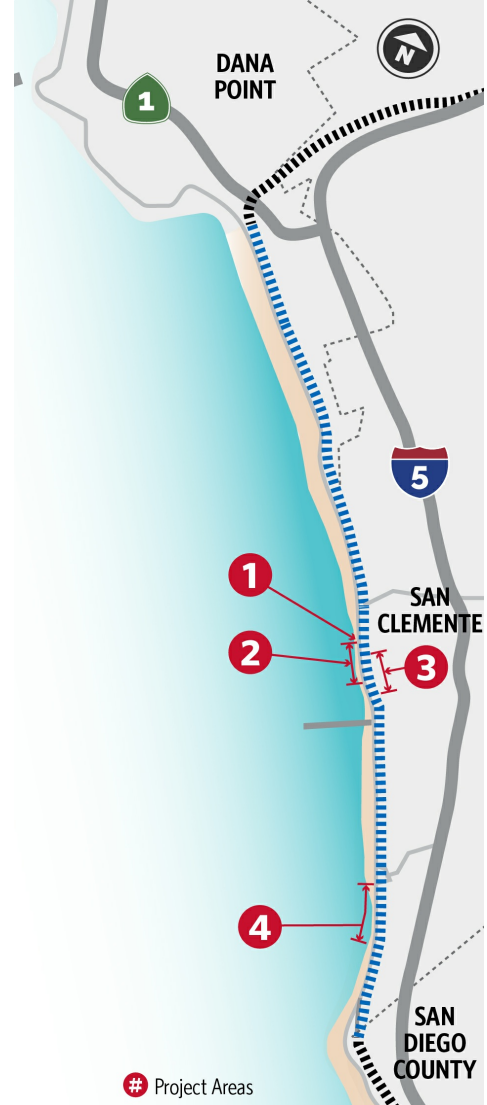
OCTA is concurrently working to source 240,000 cubic yards of sand that will be placed on the beach in Areas 1 and 2 between Mariposa Point and North Beach.

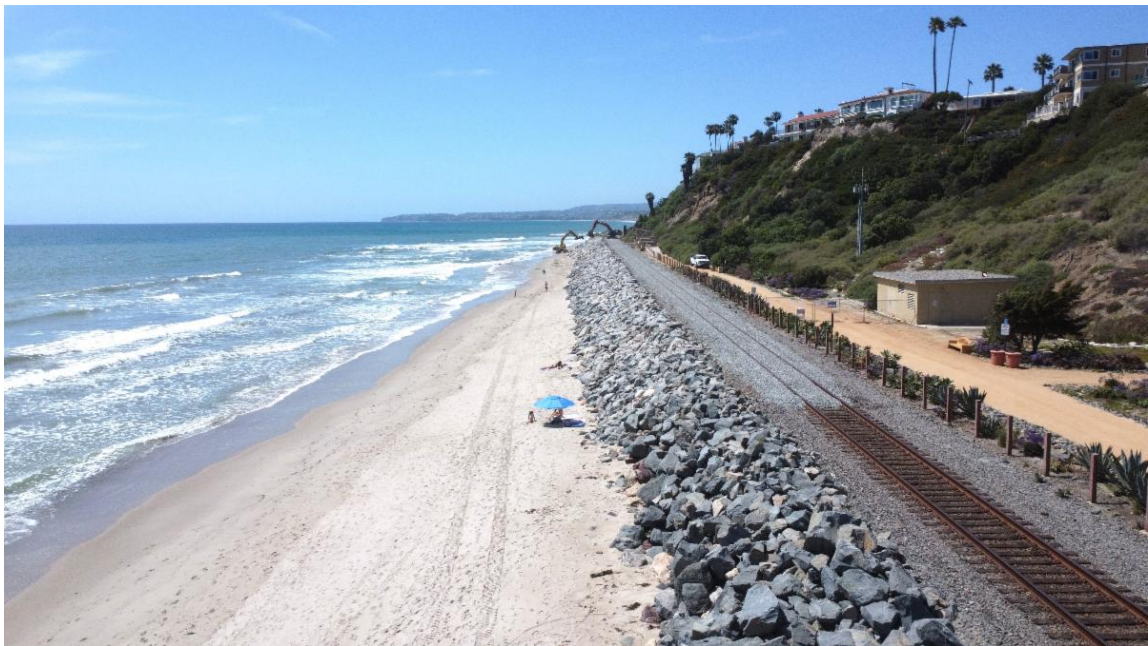
Beach and Trail Access

Several access points to the San Clemente Beach Trail and the beach are expected to be intermittently closed including El Portal, Mariposa, and Linda Lane to allow crews to perform certain activities.

The Mariposa Pedestrian Undercrossing has reopened, restoring access to the beach.

This work may be loud. The schedule is subject to change due to inclement weather or unforeseen operational issues. Train horns may be sounded.







STAY CONNECTED

 octa.net/railemergency
 railimprovements@octa.net
 800-724-0353



Orange County Transportation Authority (TS) | 550 S. Main Street | Orange, CA 92868 US

[Unsubscribe](#) | [Update Profile](#) | [Constant Contact Data Notice](#)



Try email marketing for free today!