



[Anuncio en Español](#)

4th St. Rolling Closures

OC Streetcar crews will be performing work on the electrical system that will power the streetcar. To accommodate this construction activity, rolling closures will be in effect along the eastbound lane of 4th Street from Ross Street to Mortimer Street for approximately seven days starting on January 15. **The rolling closures are anticipated to follow the below schedule:**

- **Eastbound 4th Street from Ross Street to Birch Street will be closed on January 15 and January 16**
- **Eastbound 4th Street from Broadway to Sycamore Street will be closed on January 16 and January 17**
- **Eastbound 4th Street from Sycamore Street to Main Street will be closed on January 17 and January 18**
- **Eastbound 4th Street from Main Street to Bush Street will be closed on January 18 and January 19**
- **Eastbound 4th Street from Bush Street to French Street will be closed on January 19 and January 22**
- **The left-hand turn from eastbound 4th Street onto northbound Mortimer Street and northbound Mortimer Street from 4th Street to 6th Street will be closed on January 22 and January 23**
- **Eastbound 4th Street from Spurgeon Street to French will be closed on January 19 and January 23**

The closures will be in effect from 7 a.m. to 3 p.m. each day and the eastbound lane is anticipated to reopen in the late afternoon. The eastbound lane will remain open during the weekend and the westbound lane will be open for the duration of the work.


Please note the timing for the rolling closures is an estimate and is dependent on the progress of work. Please follow posted signage in the area.


The schedule is subject to change due to inclement weather or unforeseen operational issues. Work activities are weather dependent. If a weather event or operational issue occurs on the anticipated start date, the closures will be delayed until the conditions allow the activity to start. This work may be loud.

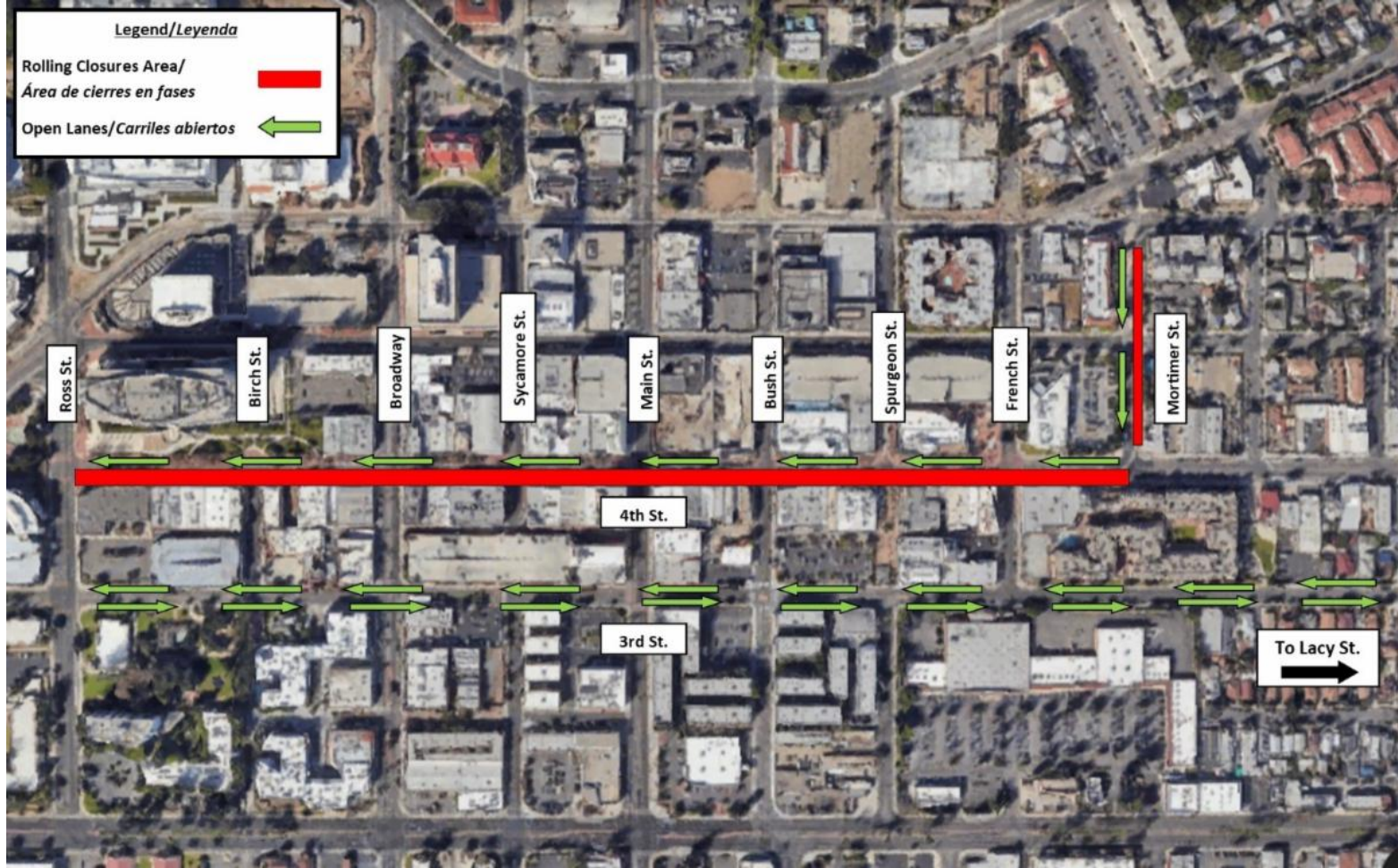
A map of the work area is below.

Work Area Map

Legend/Leyenda

Rolling Closures Area/
Área de cierres en fases 

Open Lanes/Carriles abiertos 



OCstreetcar.com



OCstreetcar@octa.net



1(844) 7GO-OCSC or
1(844) 746-6272



facebook.com/OCstreetcar



[@OCstreetcar](https://twitter.com/OCstreetcar)



[@OCstreetcar](https://instagram.com/OCstreetcar)



[Update Profile](#) | [Constant Contact Data Notice](#)

Sent by byocstreetcar@octa.net powered by



Try email marketing for free today!