

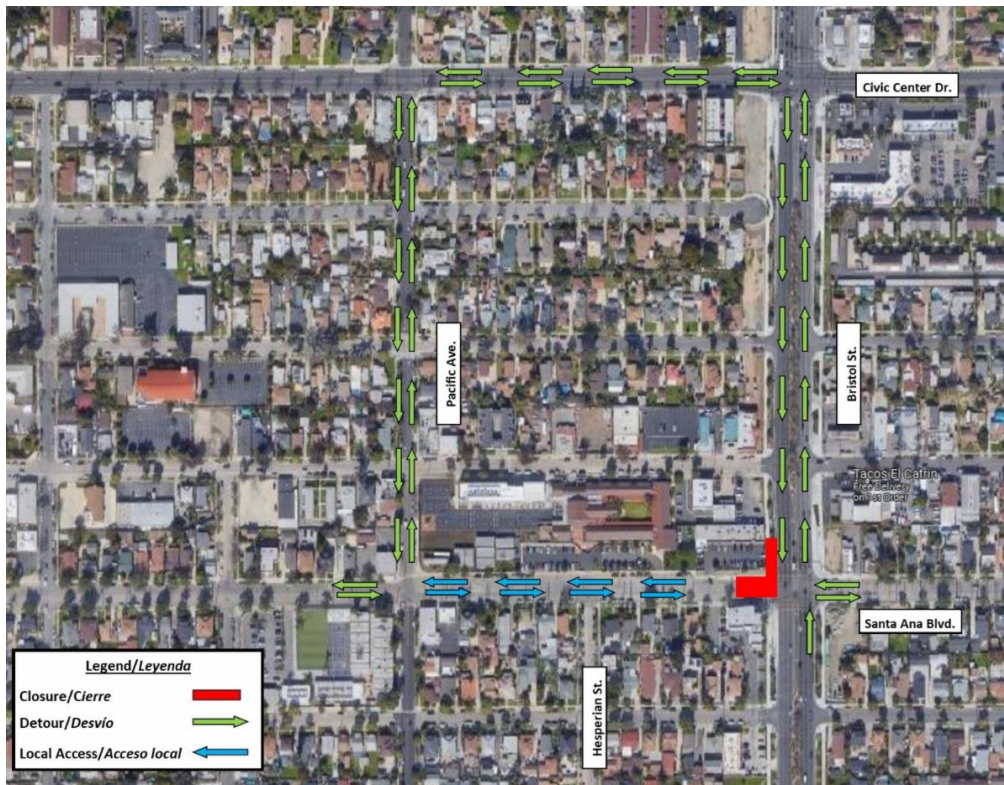


Partial Bristol St. Intersection Closure

OC Streetcar crews will be working on the track at the Bristol Street and Santa Ana Boulevard intersection. **To accommodate this work, a single southbound lane on Bristol Street will be closed and the Bristol Street and Santa Ana Boulevard intersection will be closed to eastbound and westbound traffic on May 17, from 6 a.m. to 5 p.m.** Local access to residences and business will be maintained at all times.

The schedule is subject to change due to inclement weather or unforeseen operational issues. Work activities are weather dependent. If a weather event or operational issue occurs on the anticipated start date, the closures will be delayed until the conditions allow the activity to start. This work may be loud.

Closure Map



OCstreetcar.com



OCstreetcar@octa.net



1(844) 7GO-OCSC or
1(844) 746-6272



facebook.com/OCstreetcar



[@OCstreetcar](https://twitter.com/OCstreetcar)



[@OCstreetcar](https://www.instagram.com/OCstreetcar)



OC Streetcar | 550 S. Main Street | Orange, CA 92868 US

[Unsubscribe](#) | [Update Profile](#) | [Constant Contact Data Notice](#)



Try email marketing for free today!