



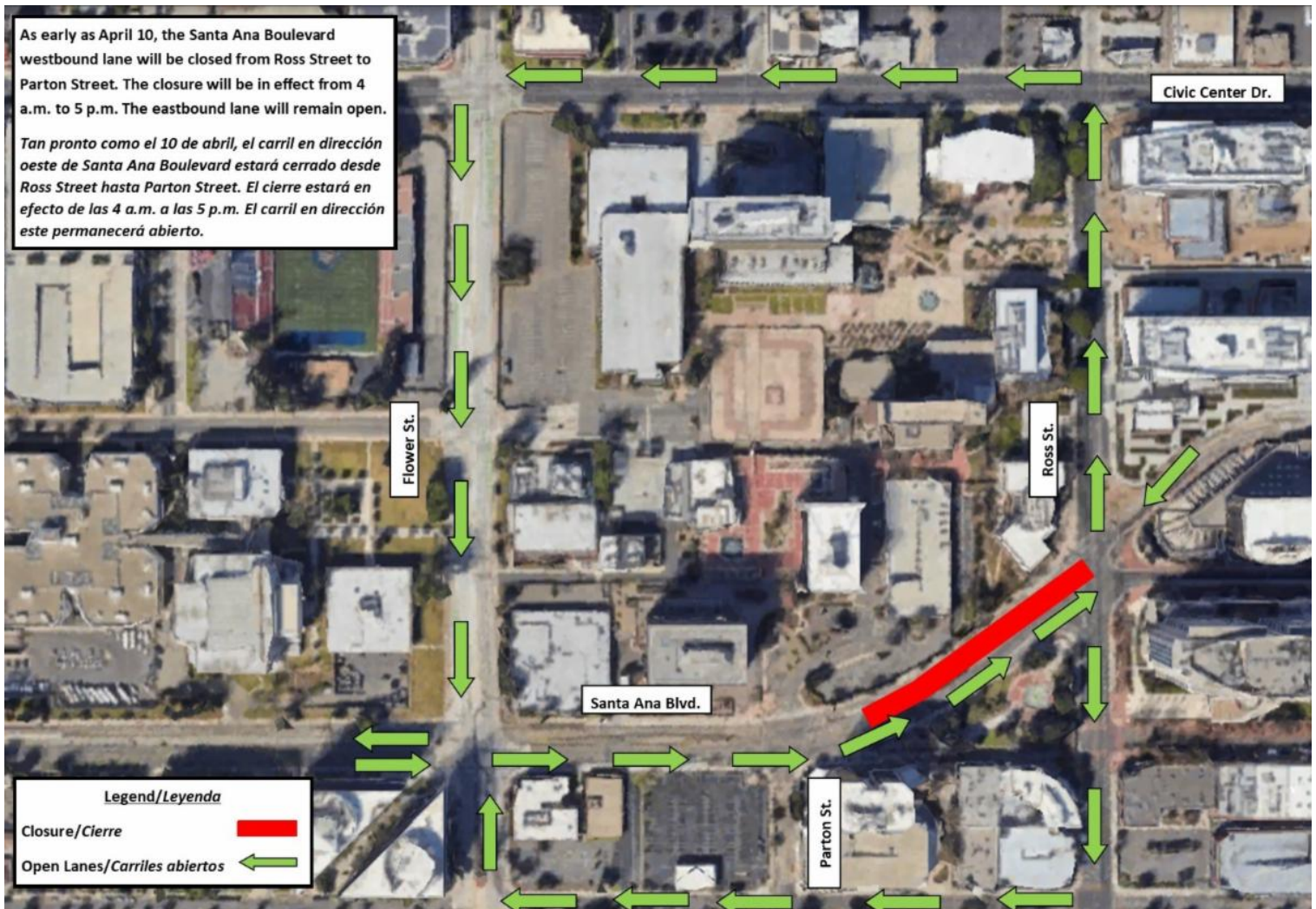
Westbound Santa Ana Blvd. Closure

OC Streetcar crews will be working on the electrical system for the project. To accommodate this work, **the Santa Ana Boulevard westbound lane will be closed from Ross Street to Parton Street starting as early as April 10. The closure will be in effect from 4 a.m. to 5 p.m. The eastbound lane will remain open.**

The schedule is subject to change due to inclement weather or unforeseen operational issues. Work activities are weather dependent. If a weather event or operational issue occurs on the anticipated start date, the closures will be delayed until the conditions allow the activity to start. This work may be loud.

A map of the closure is below.

Closure Map





OCstreetcar.com



OCstreetcar@octa.net



1(844) 7GO-OCSC or
1(844) 746-6272



facebook.com/OCstreetcar



@OCstreetcar



@OCstreetcar



OC Streetcar | 550 S. Main Street , Orange, CA 92868

[Unsubscribe mtwite@katzandassociates.com](mailto:mtwite@katzandassociates.com)

[Update Profile](#) | [Constant Contact Data Notice](#)

Sent byocstreetcar@octa.netpowered by



Try email marketing for free today!