



**OC Foothills Bikeways Collaborative
Roundtable Discussion
Thursday, September 10, 2015
5:00 p.m. – 7:30 p.m.
Orchard Hills School**

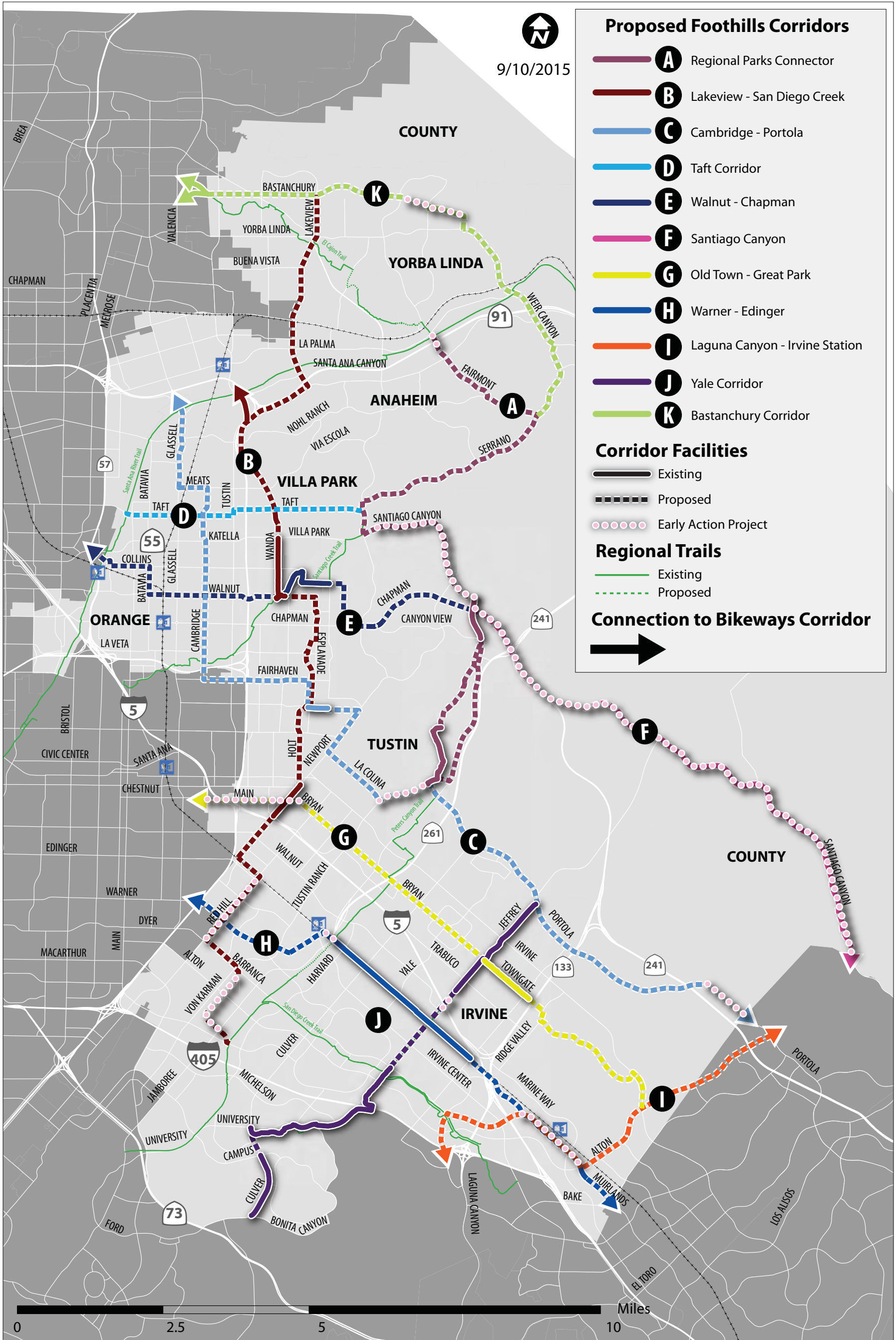
Meeting Agenda

Open House (5:00-5:30 p.m.)

1. Welcome & Regional Vision (15 min)
 - a. *Jeffrey Lalloway, OCTA Board Chairman & Irvine Mayor Pro-tem*
 - b. *Todd Spitzer, OCTA Board Director & Chairman of the Orange County Board of Supervisors*
 - c. *Al Murray, OCTA Board Director & City of Tustin Councilmember*
2. Corridor Features – *John Lieswyn, Alta Planning & Design* (25 min)
3. Group Discussion: Feedback on Corridors (45 min)
4. Next Steps - *Jeffrey Lalloway, OCTA Board Chairman & Irvine Mayor Pro-tem* (20 min)

CORRIDOR LOCATIONS

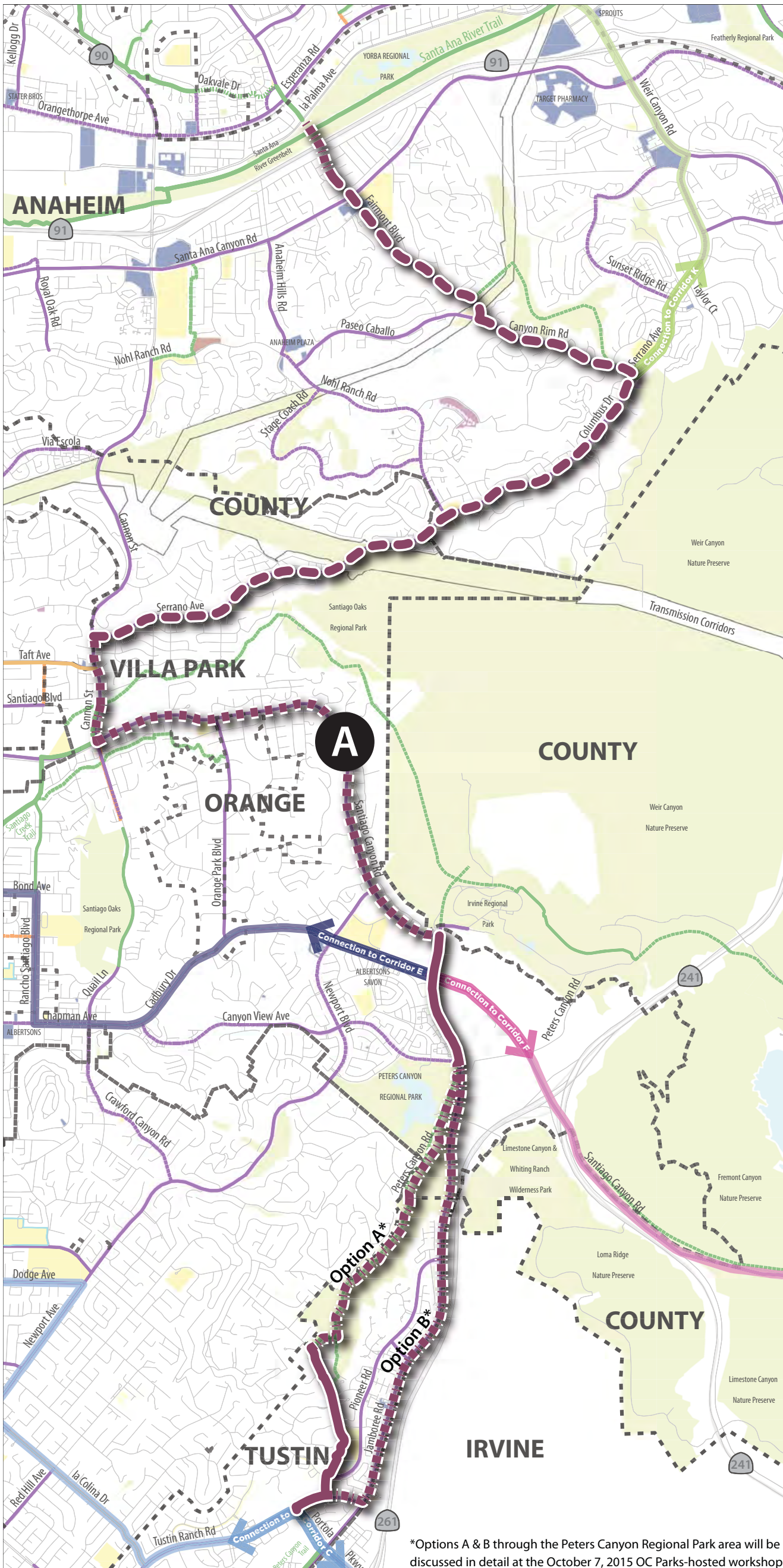
OC Foothills Bikerways Collaborative





CORRIDOR A: REGIONAL TRAILS CONNECTOR

OC Foothills Bikeways Collaborative



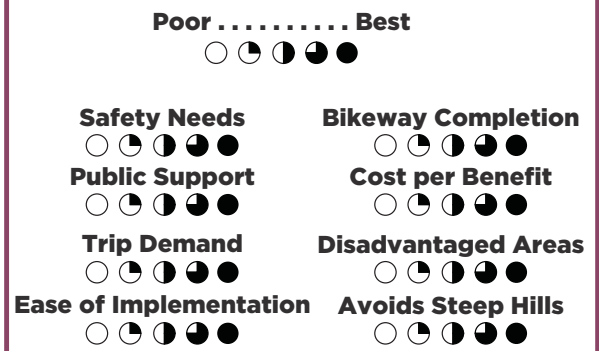
*Options A & B through the Peters Canyon Regional Park area will be discussed in detail at the October 7, 2015 OC Parks-hosted workshop.

Corridor Details

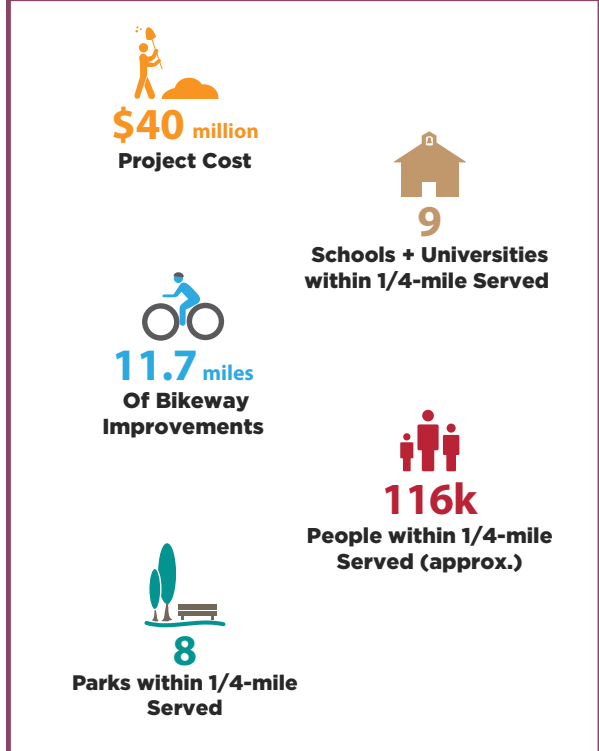
2.1 miles of existing bikeways
9.3 miles of new bikeways
2.4 miles of new trails
= 13.8 miles of bikeways

- Existing Bikeway
- Proposed Class I Bike Path
- Proposed Class IV
- Proposed Class II Bike Path with Striped Buffer

Scoring



Key Facts



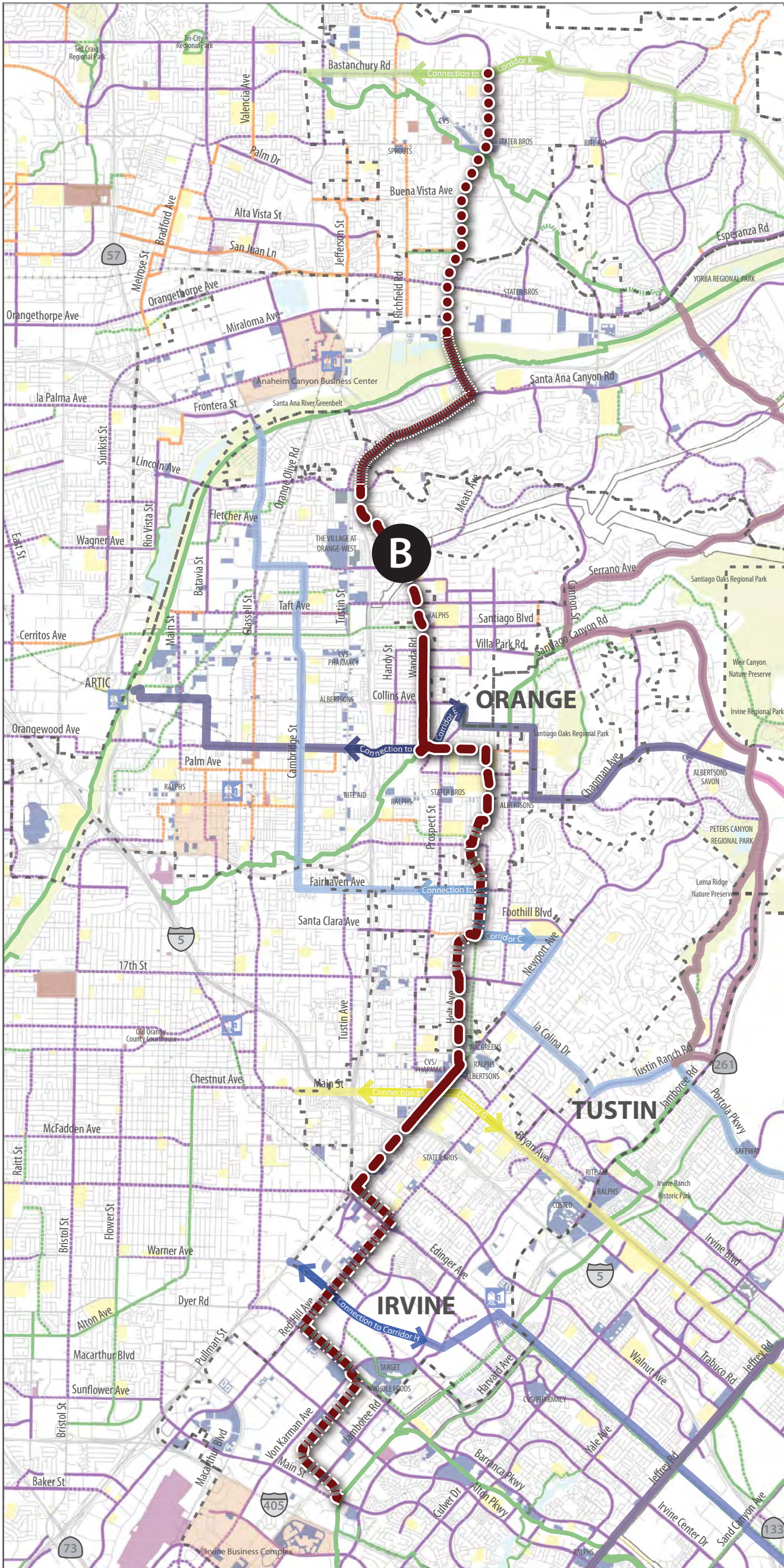
Legend

- City Boundary
- Existing** **Proposed**
- Class I (Regional)
- Class I (Local)
- Class II
- Class III
- Parks
- Schools
- Civic
- Shopping



CORRIDOR B: LAKEVIEW - SAN DIEGO CREEK

OC Foothills Bikeways Collaborative

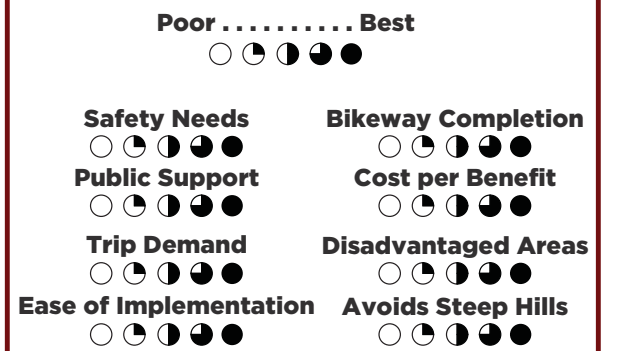


Corridor Details

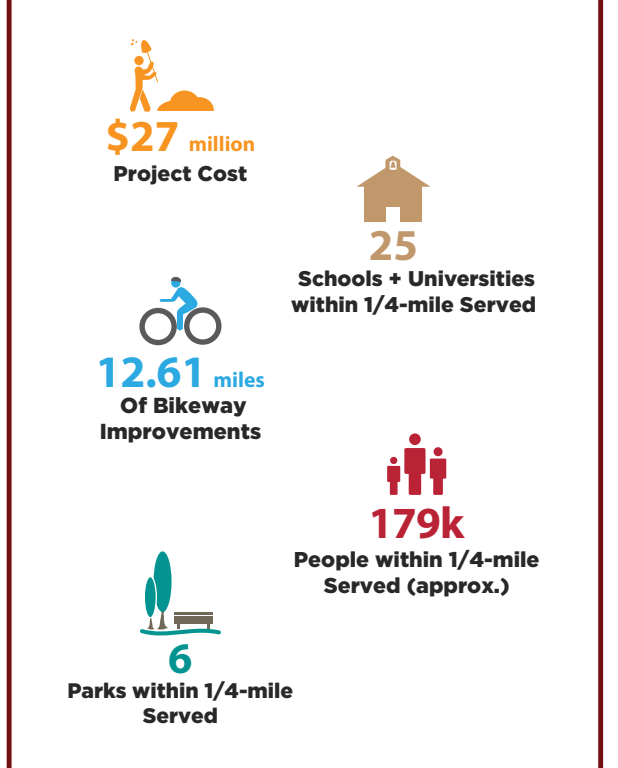
6.34 miles of existing bikeways
10.56 miles of new bikeways
2.05 miles of new trails
= 18.95 miles of bikeways

- Existing Bikeway
- Proposed Class I Bike Path
- Proposed Class II Bike Lanes
- Proposed Class II Bike Path with Striped Buffer
- Class III

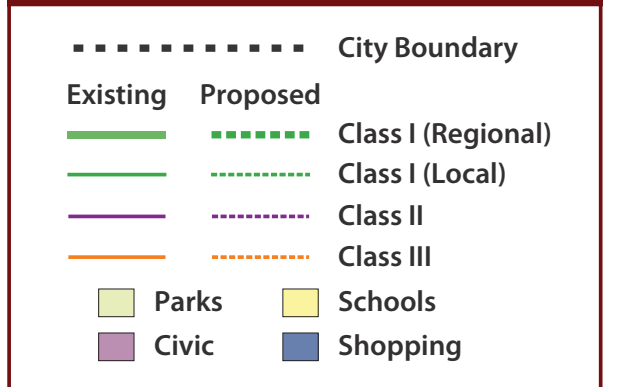
Scoring



Key Facts



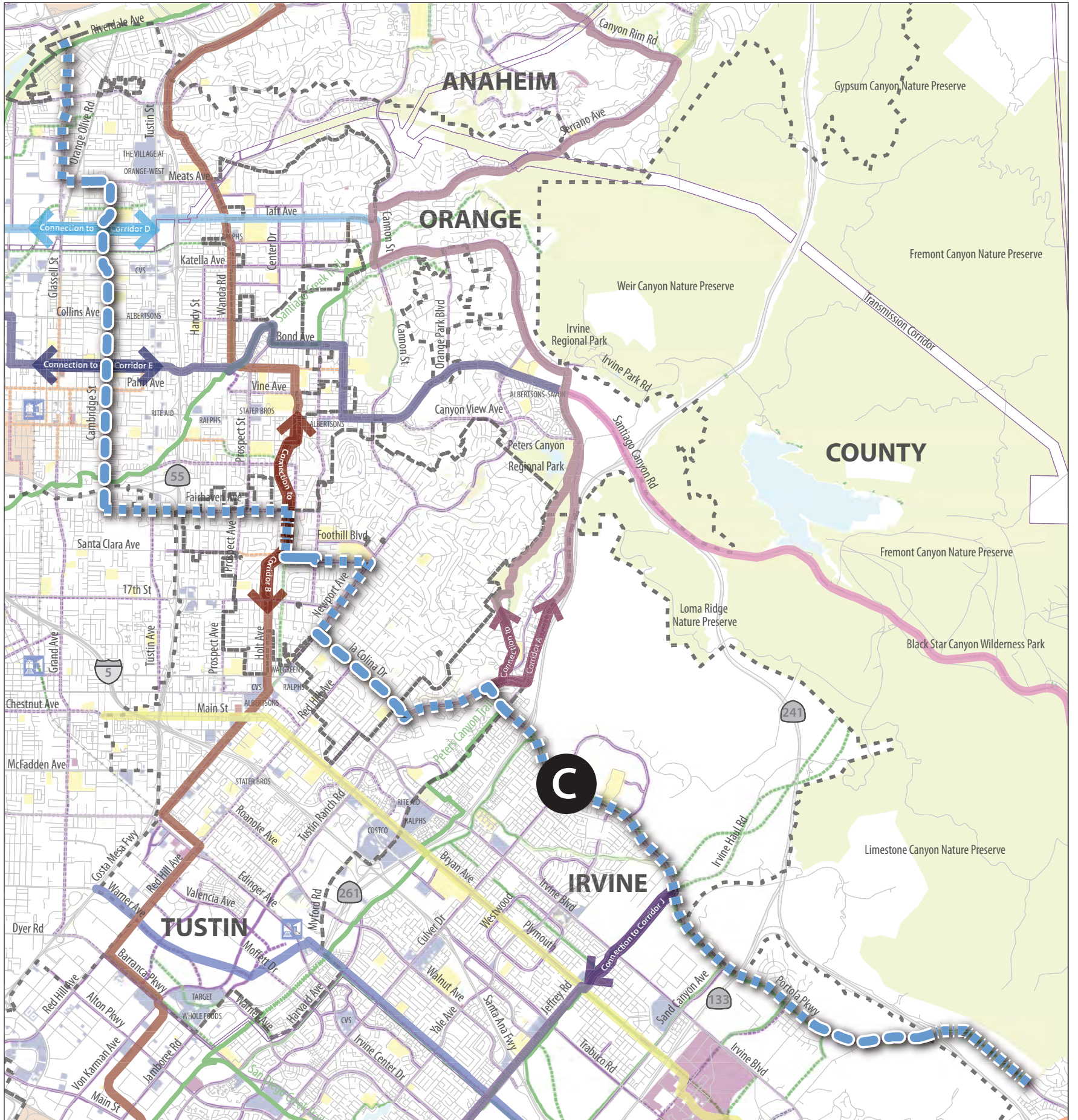
Legend





CORRIDOR C: CAMBRIDGE - PORTOLA

OC Foothills Bikeways Collaborative

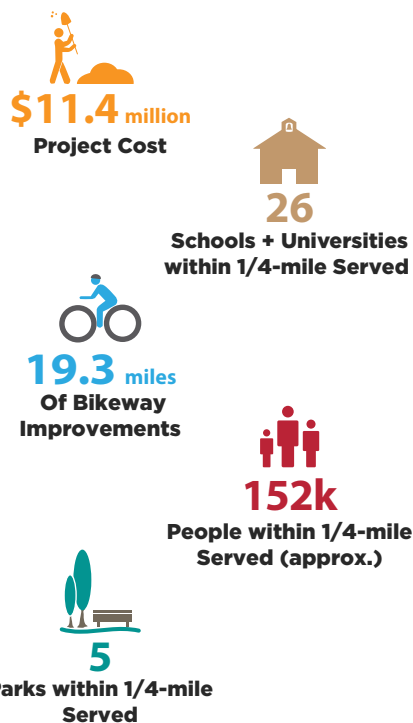


Corridor Details

0.29 miles of existing bikeways
17.53 miles of new bikeways
1.77 miles of new trails
= 19.6 miles of bikeways

- Existing Bikeway
- Proposed Class I Bike Path
- Proposed Class II Bike Lanes
- Proposed Class II Bike Path with Striped Buffer
- Proposed Class III
- Proposed Class IV

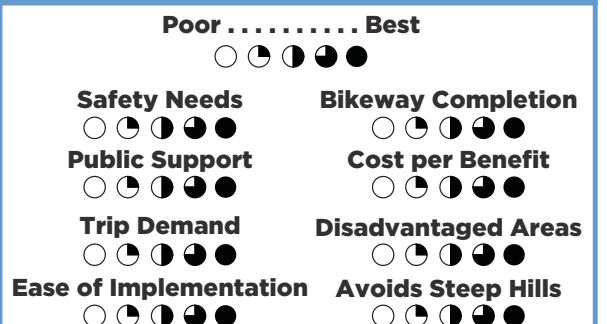
Key Facts



Legend

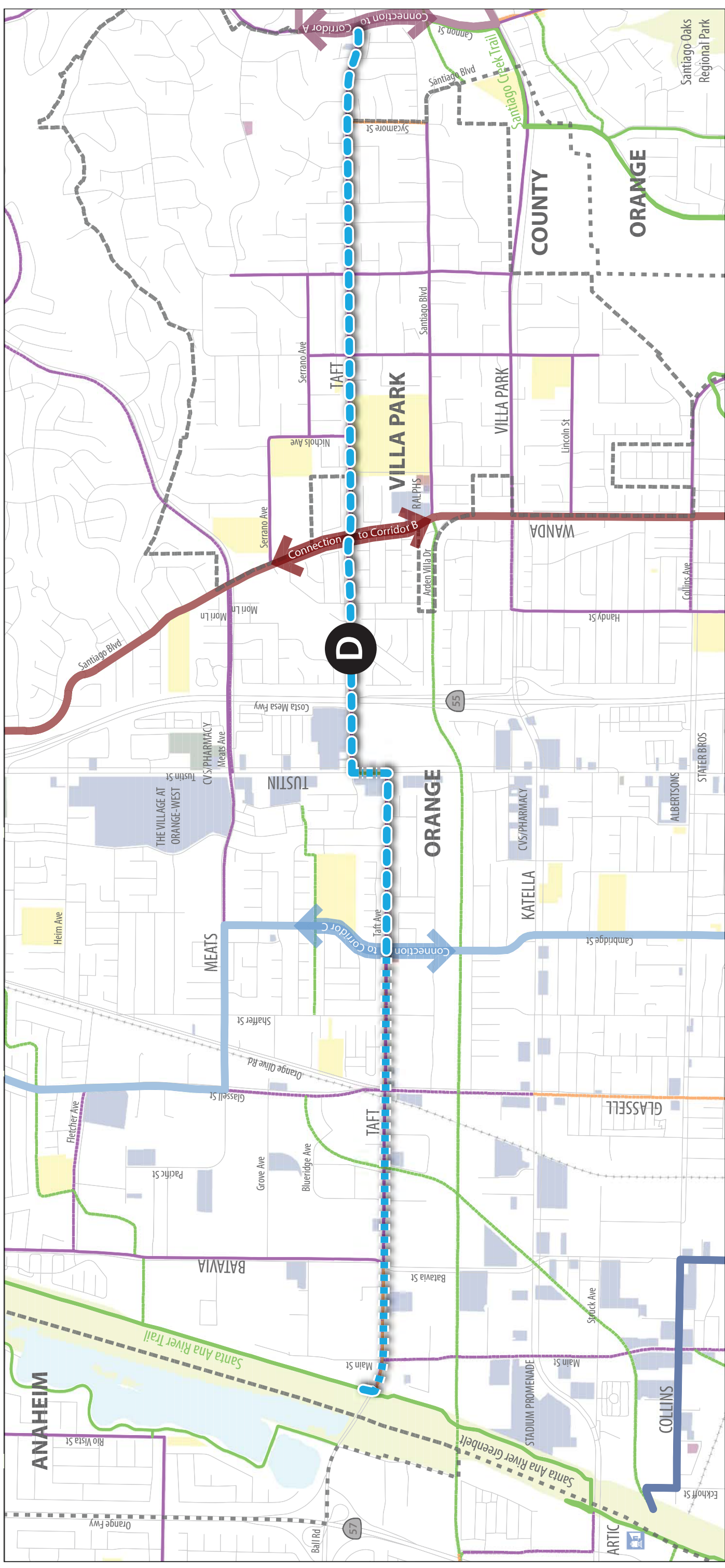
- City Boundary
- Existing** Class I (Regional)
- Proposed Class I (Local)
- Class II
- Proposed Class II
- Class III
- Proposed Class III
- Parks
- Schools
- Civic
- Shopping

Scoring



CORRIDOR D: TAFT CORRIDOR

OC Foothills Bikeways Collaborative



Corridor Details

- 0 miles of existing bikeways
 - 4.24 miles of new bikeways
 - 0.14 miles of new trails
- = 4.38 miles of bikeways**

Key Facts

- 2 Parks within 1/4-mile Served
- 6 Schools + Universities within 1/4-mile Served
- 52k People within 1/4-mile Served (approx.)
- 4.38 miles Of Bikeway Improvements
- \$2.2 million Project Cost

Scoring

Poor Best

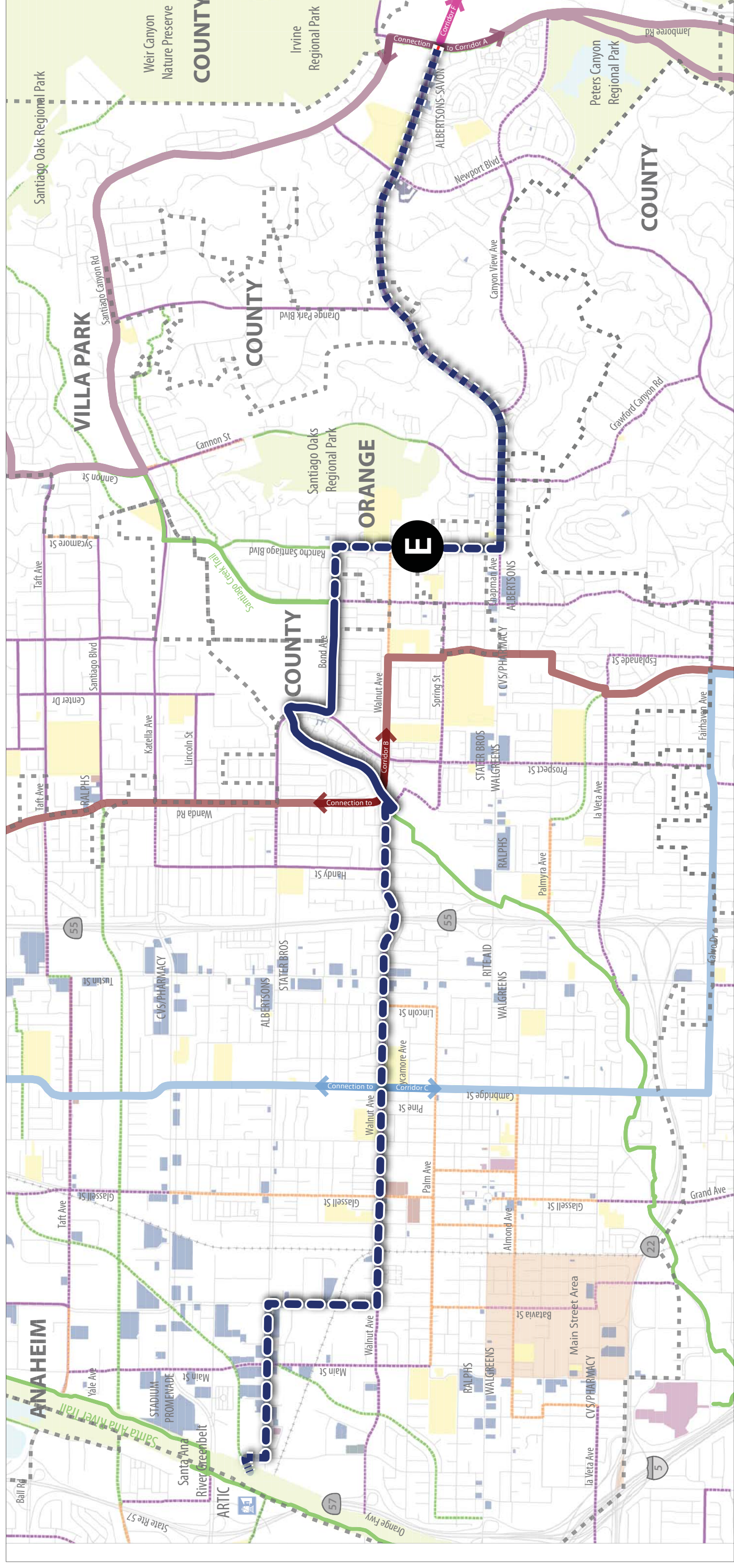
- Safety Needs
- Bikeway Completion
- Public Support
- Trip Demand
- Ease of Implementation
- Cost per Benefit
- Disadvantaged Areas
- Avoids Steep Hills

Legend

- City Boundary
- Existing
- Proposed
- Class I (Regional)
- Class I (Local)
- Class II
- Class III
- Parks
- Civic
- Schools
- Shopping

CORRIDOR E: WALNUT - CHAPMAN

OC Foothills Bikeways Collaborative



Corridor Details

- 1.47 miles of existing bikeways
 - 7.21 miles of new bikeways
 - 0.1 miles of new trails
 - = 8.78 miles of bikeways**
- Existing Bikeway
 - Proposed Class I Bike Path
 - Proposed Class II Bike Path with Striped Buffer
 - Proposed Class IV

Key Facts

- 4 Parks within 1/4-mile Served
- 10 Schools + Universities within 1/4-mile Served
- 107k People within 1/4-mile Served (approx.)
- \$3.7 million Project Cost
- 7.31 miles Of Bikeway Improvements

Scoring

Poor Best

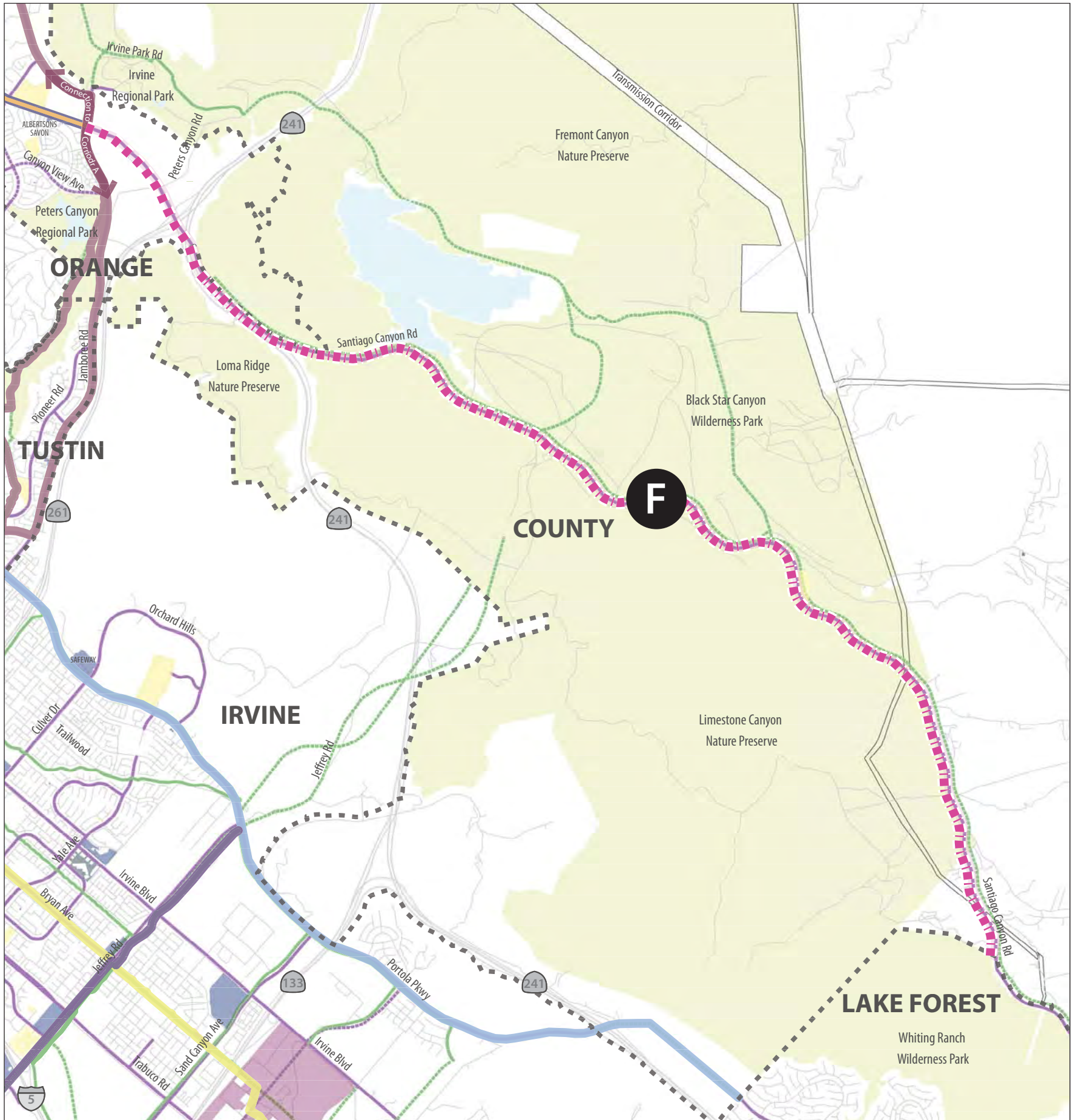
- Safety Needs
- Bikeway Completion
- Public Support
- Trip Demand
- Ease of Implementation
- Cost per Benefit
- Disadvantaged Areas
- Avoids Steep Hills

Legend

- City Boundary
- Existing
- Proposed
- Class I (Regional)
- Class I (Local)
- Class II
- Class III
- Parks
- Civic
- Schools
- Shopping

CORRIDOR F: SANTIAGO CANYON

OC Foothills Bikeways Collaborative

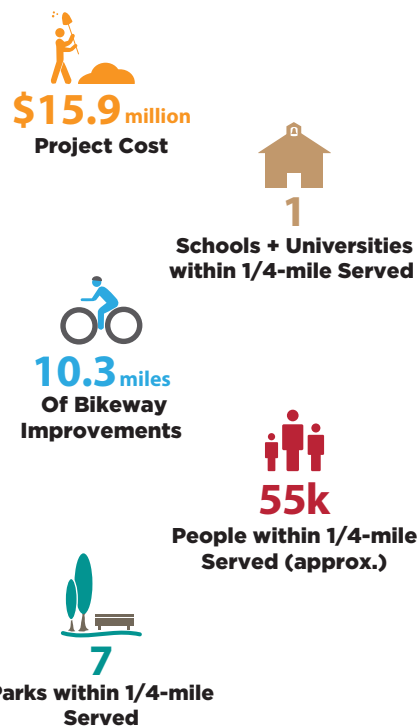


Corridor Details

0 miles of existing bikeways
1.54 miles of new bikeways
8.73 miles of new trails
= 10.3 miles of bikeways

- Existing Bikeway
- Proposed Class I Bike Path
- Proposed Class IV

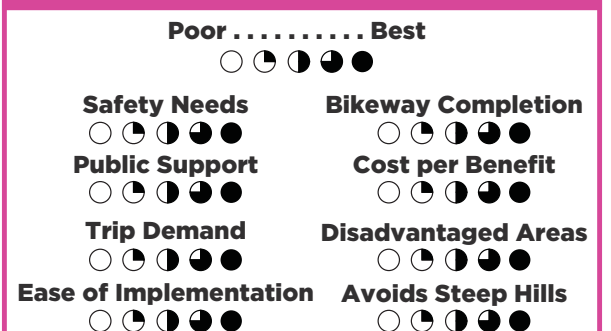
Key Facts



Legend

- | | | | |
|----------|---------------|--------------------|----------|
| ----- | City Boundary | | |
| Existing | Proposed | | |
| | | Class I (Regional) | |
| | | Class I (Local) | |
| | | Class II | |
| | | Class III | |
| | | Parks | Schools |
| | | Civic | Shopping |

Scoring



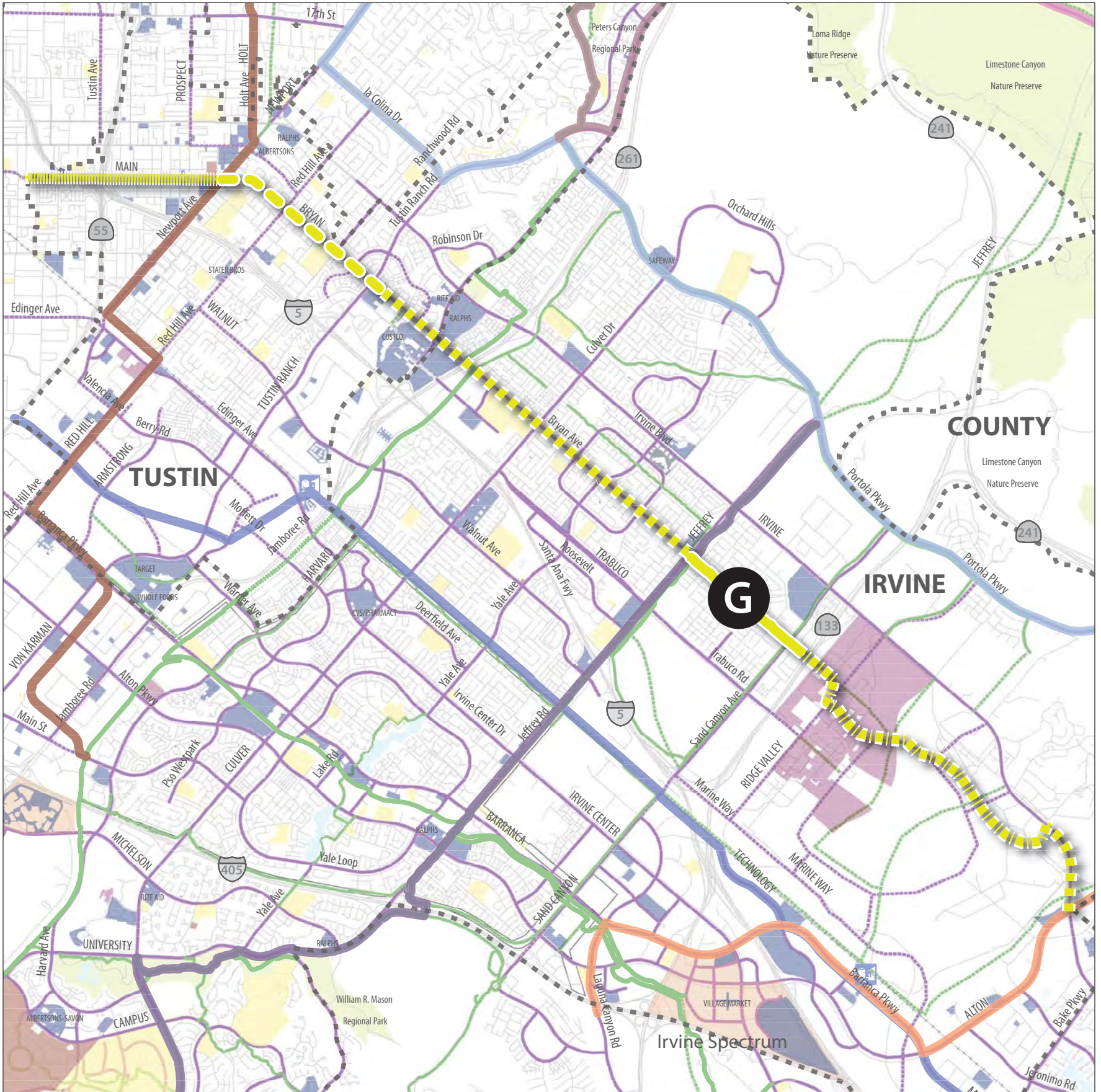


CORRIDOR G: OLD TOWN - GREAT PARK

OC Foothills Bikeways Collaborative



FEHR PEERS



Corridor Details

1.09 miles of existing bikeways

5.28 miles of new bikeways

2.68 miles of new trails

1.48 miles of bike routes

= 9.1 miles of bikeways

- Existing Bikeway
- Proposed Class II Bike Lanes
- Proposed Class II Bike Path with Striped Buffer
- Proposed Class III
- Proposed Class IV

Key Facts

\$21.2 million
Project Cost

12
Schools + Universities
within 1/4-mile Served

7.96 miles
Of Bikeway
Improvements

93k
People within 1/4-mile
Served (approx.)

11
Parks within 1/4-mile
Served

Legend

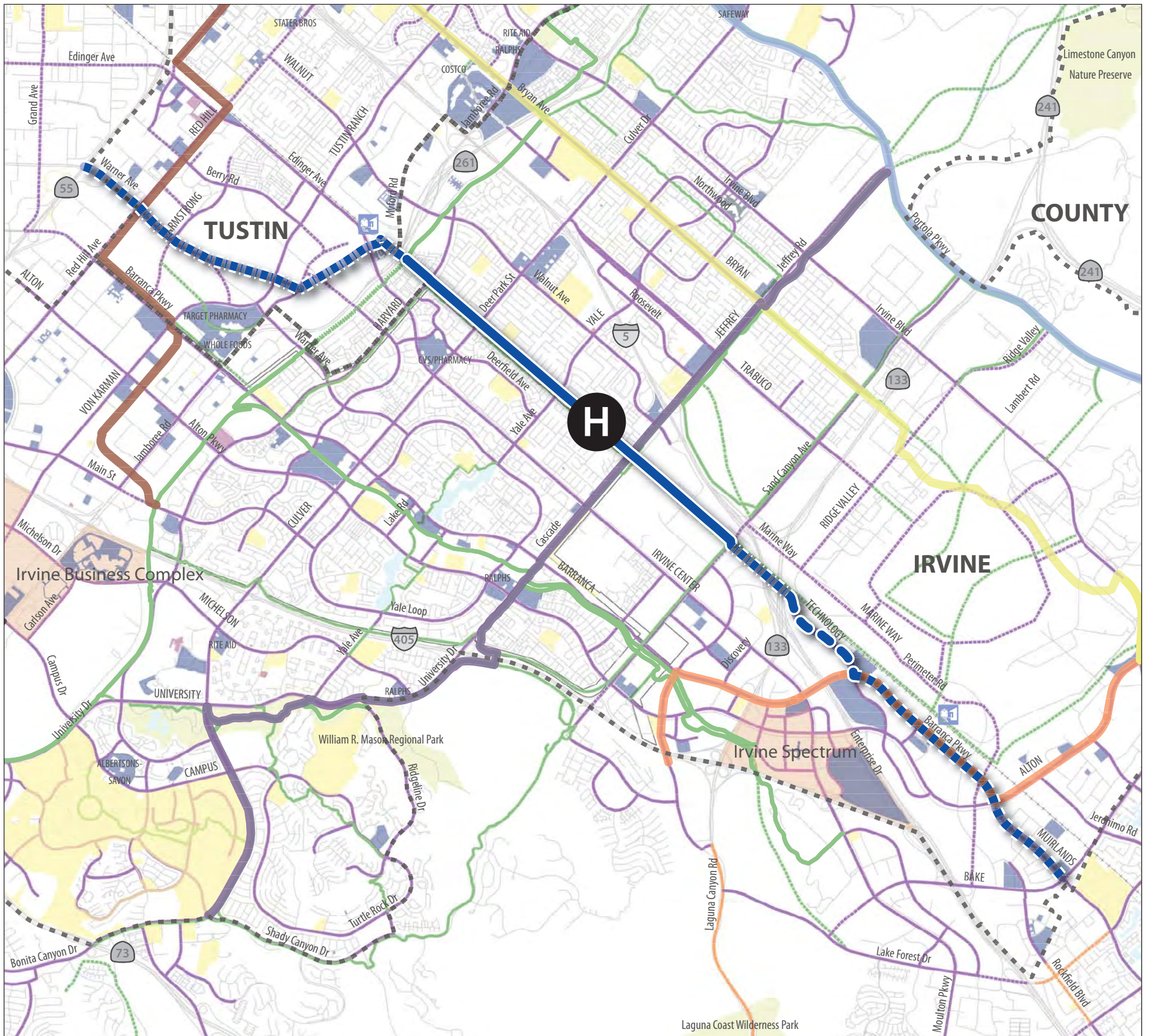
- City Boundary
- Existing Class I (Regional)
- Proposed Class I (Local)
- Class II
- Class III
- Parks
- Schools
- Civic
- Shopping

Scoring

- Poor Best
- Safety Needs
 - Public Support
 - Trip Demand
 - Ease of Implementation
 - Bikeway Completion
 - Cost per Benefit
 - Disadvantaged Areas
 - Avoids Steep Hills

CORRIDOR H: WARNER - EDINGER

OC Foothills Bikeways Collaborative

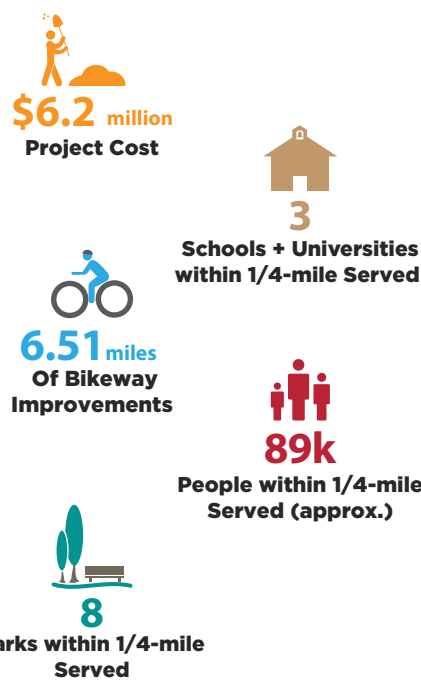


Corridor Details

3.22 miles of existing bikeways
3.53 miles of new bikeways
2.98 miles of new trails
= 9.73 miles of bikeways

- Existing Bikeway
- Proposed Class I Bike Path
- Proposed Class II Bike Path with Striped Buffer
- Proposed Class IV

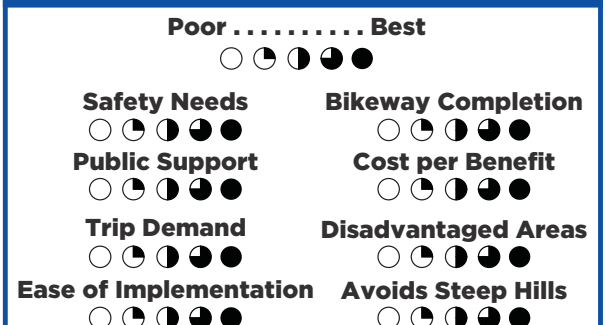
Key Facts

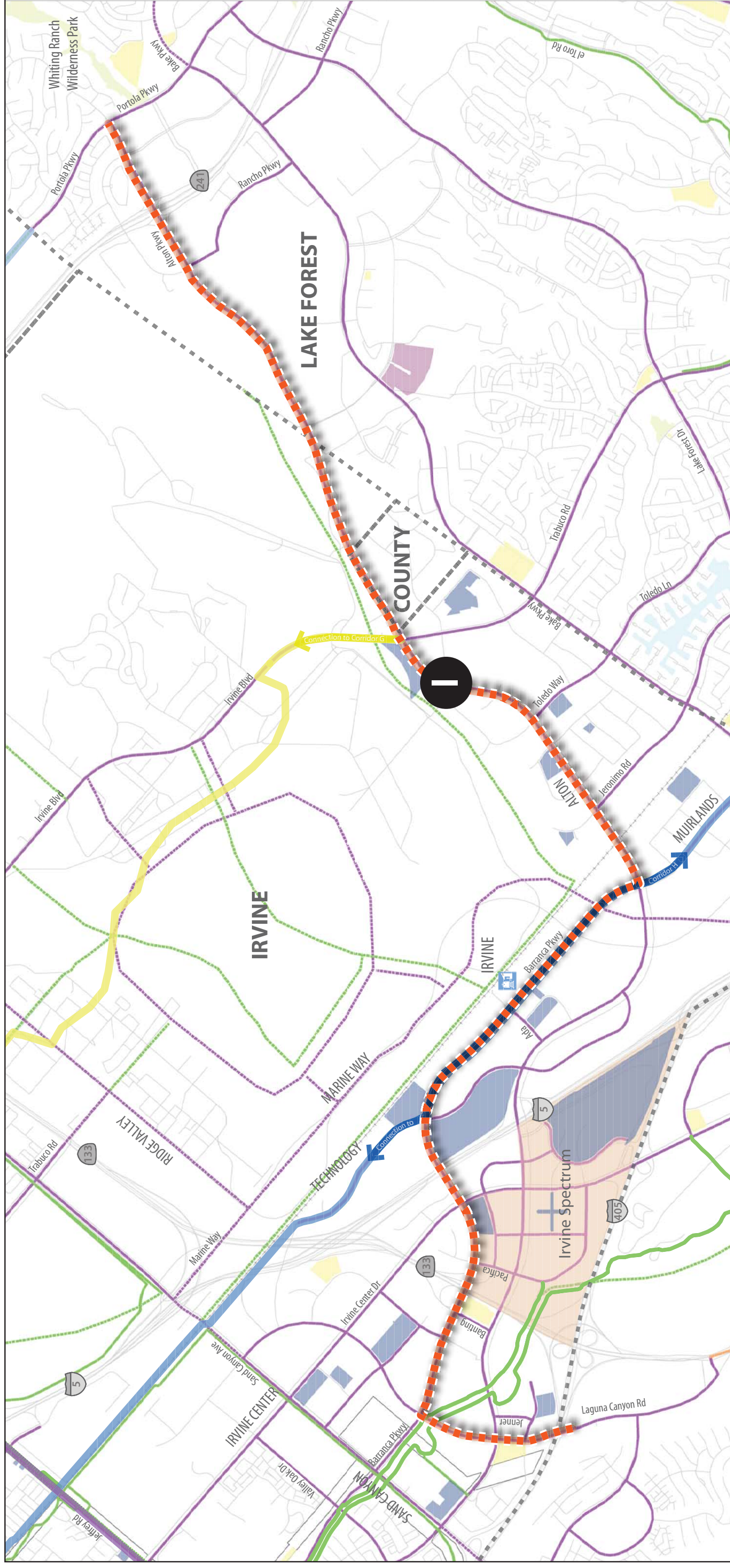


Legend

- City Boundary
- Existing**
 - Class I (Regional)
 - Class II
 - Class III
- Proposed**
 - Class I (Local)
 - Class II
 - Class III
- Parks
- Civic
- Schools
- Shopping

Scoring





Corridor Details

0 miles of existing bikeways
7.9 miles of new bikeways
0 miles of new trails

Existing Bikeway
 Proposed Class IV

= 7.9 miles of bikeways

Key Facts

3 Parks within 1/4-mile Served
2 Schools + Universities within 1/4-mile Served

26k People within 1/4-mile Served (approx.)
\$13.9 million Project Cost

7.9 miles Of Bikeway Improvements

Scoring

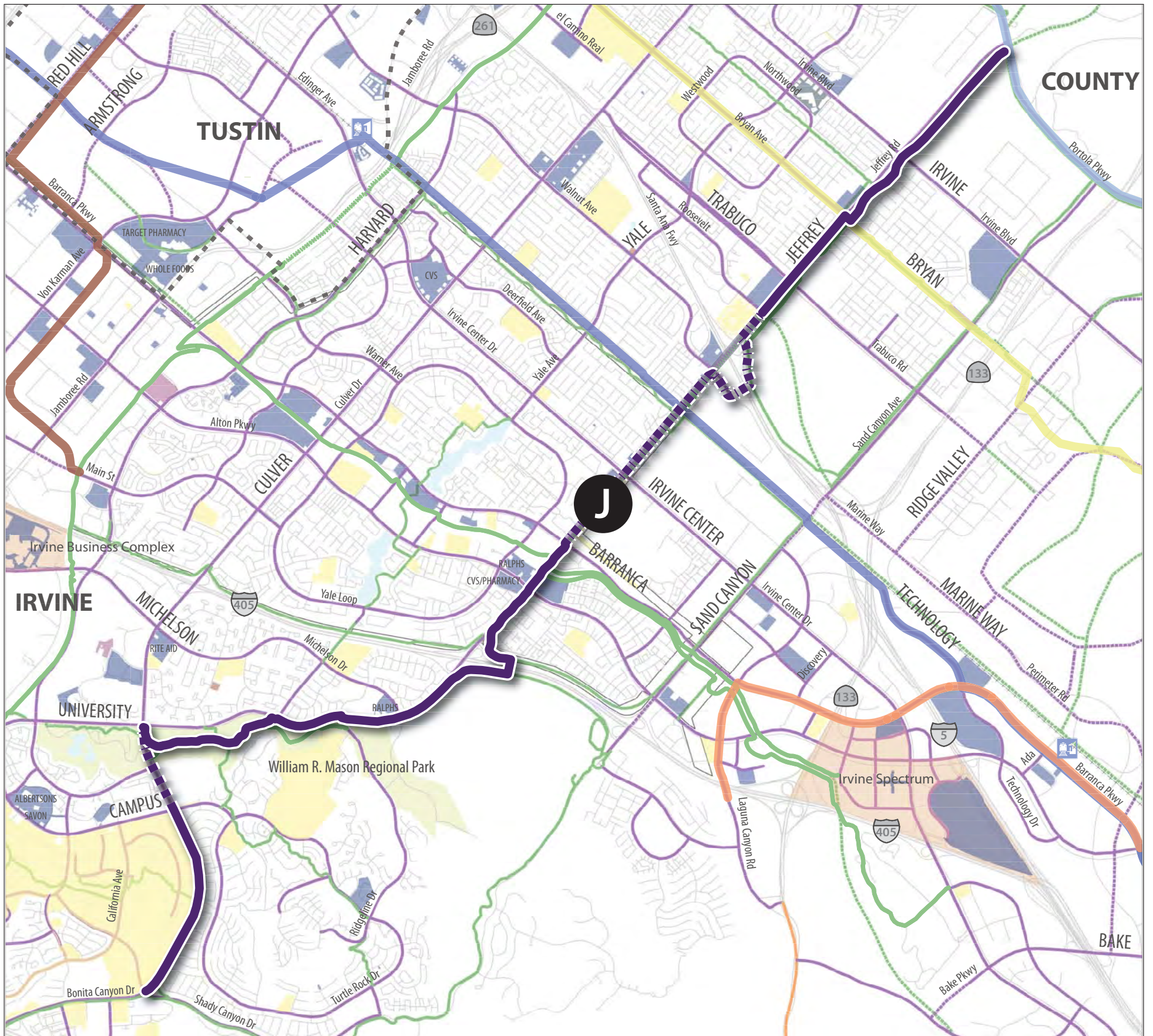
Poor..... Best
 Safety Needs ○●●●●
 Public Support ○●●●●
 Trip Demand ○●●●●
 Ease of Implementation ○●●●●
 Bikeway Completion ○●●●●
 Cost per Benefit ○●●●●
 Disadvantaged Areas ○●●●●
 Avoids Steep Hills ○●●●●

Legend

--- City Boundary
 --- Existing
 --- Proposed
 --- Class I (Regional)
 --- Class I (Local)
 --- Class II
 --- Class III
 --- Parks
 --- Civic
 --- Schools
 --- Shopping

CORRIDOR J: JEFFREY CORRIDOR

OC Foothills Bikeways Collaborative

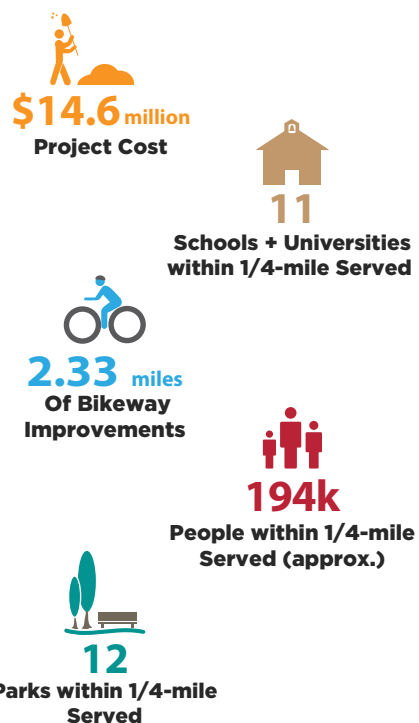


Corridor Details

6.84 miles of existing bikeways
0.33 miles of new bikeways
2 miles of new trails
= 9.17 miles of bikeways

- Existing Bikeway
- Proposed Class I Bike Path
- Proposed Class IV

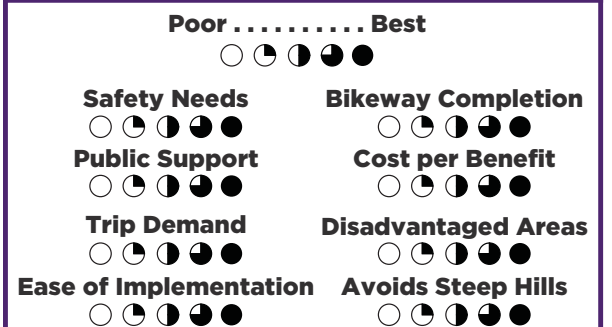
Key Facts



Legend

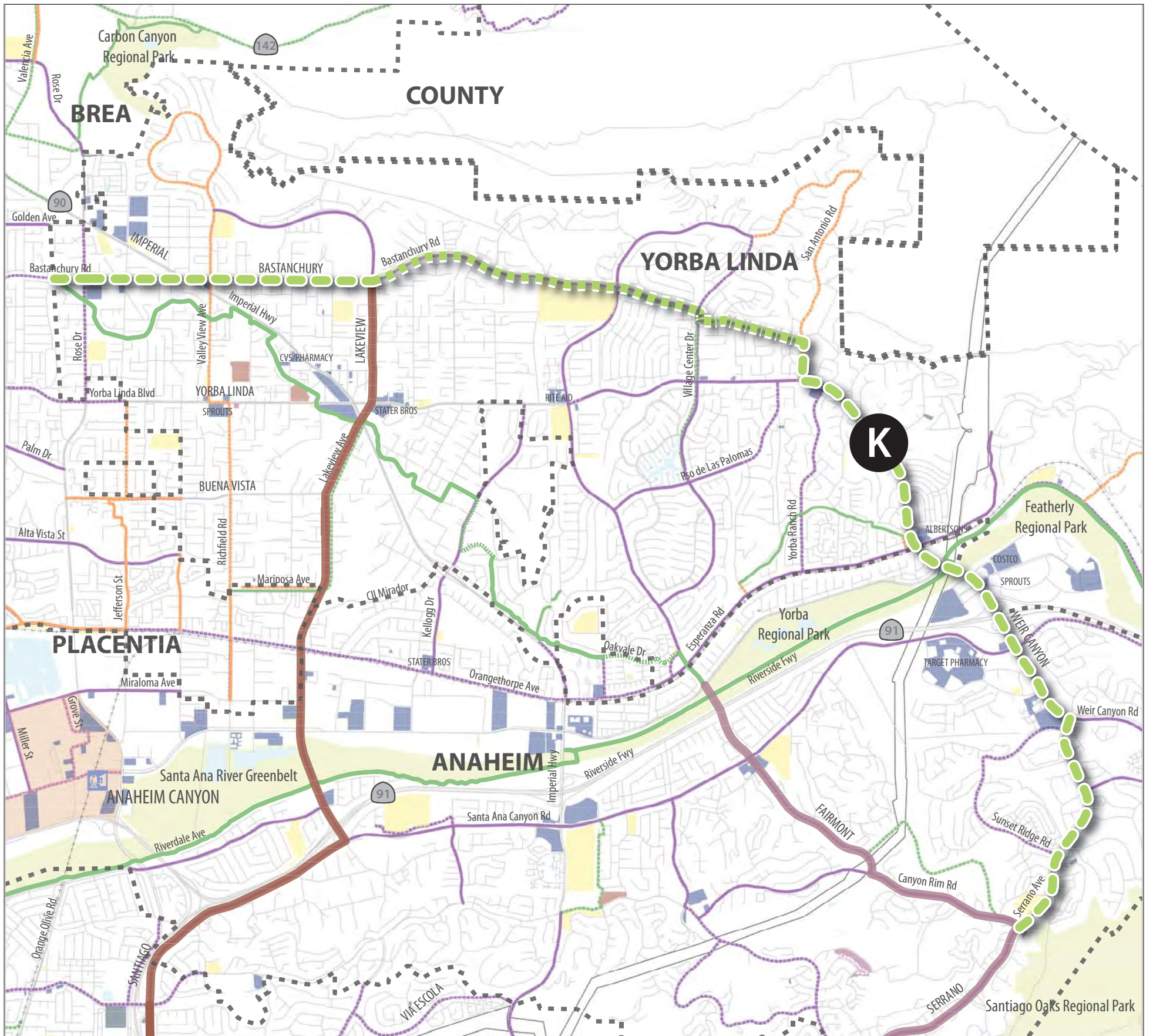
- City Boundary
- Existing** Class I (Regional)
- Proposed** Class I (Local)
- Class II
- Class III
- Parks
- Schools
- Civic
- Shopping

Scoring



CORRIDOR K: BASTANCHURY CORRIDOR

OC Foothills Bikeways Collaborative



Corridor Details

- 04.59 miles of existing bikeways
- 8.47 miles of new bikeways
- 0.69 miles of new trails
- = 9.16 miles of bikeways**

- Existing Bikeway
- Proposed Class I Bike Path
- Proposed Class II Bike Path with Striped Buffer
- Proposed Class IV

Key Facts

- \$33.4 million** Project Cost
- 8** Schools + Universities within 1/4-mile Served
- 9.16 miles** Of Bikeway Improvements
- 95k** People within 1/4-mile Served (approx.)
- 8** Parks within 1/4-mile Served

Legend

	City Boundary
	Existing Class I (Regional)
	Proposed Class I (Regional)
	Existing Class I (Local)
	Proposed Class I (Local)
	Existing Class II
	Proposed Class II
	Existing Class III
	Proposed Class III
	Parks
	Schools
	Civic
	Shopping

Scoring

Poor Best
