



# DIRECTIONS 2045

LONG RANGE TRANSPORTATION PLAN

Sustainable, equitable, and innovative transportation solutions.

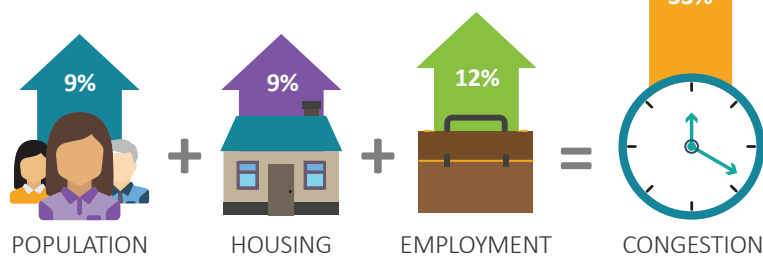
## TRANSPORTATION CHALLENGES & OPPORTUNITIES

The Long Range Transportation Plan (LRTP) is a blueprint for transportation improvements in Orange County over the next 20+ years.

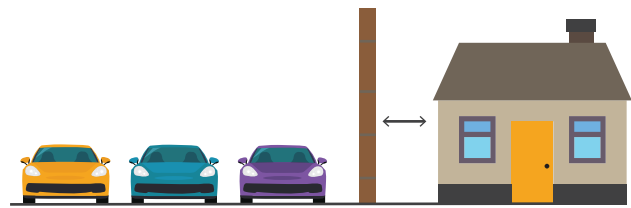
Below are some of the transportation challenges and opportunities forecasted going into the year 2045.

### GROWING TRAVEL DEMAND & LIMITED LAND

As population, housing and employment grow, so do daily trips and congestion



Road and freeway widening opportunities are limited by land availability and potential community impacts

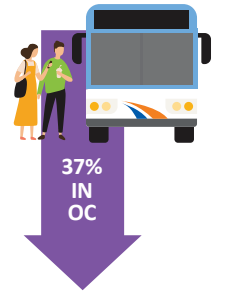


### EVOLVING TRAVEL TRENDS



Long-term implications of COVID-19 on travel patterns will take time to understand

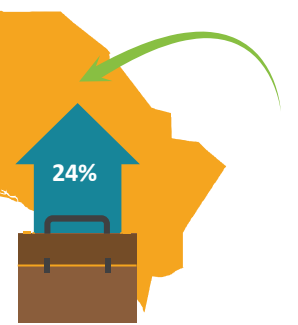
Transit ridership has declined nationwide since the Great Recession



Emerging technologies and services are changing travel behaviors



With years of jobs outpacing housing availability, more people are commuting into Orange County

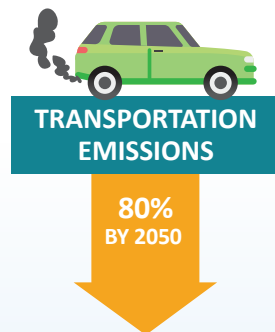


### INCREASING CLIMATE RELATED RISKS



Orange County residents and infrastructure are impacted by high heat, wildfires, drought, coastal flooding and inland flooding

State and regional plans and policies include strategies to meet ambitious greenhouse gas emissions reduction goals



### CHANGING FUNDING OUTLOOK



Orange County's local transportation sales tax is set to end in 2041

The state is leveraging its more than \$5 billion transportation budget to reduce greenhouse gas emissions and address inequities in transportation



### DIVERSITY, EQUITY & INCLUSION



Nationwide, disadvantaged populations have historically been disproportionately burdened by transportation inequities that have limited access to opportunities

Policies and practices need to be considered to make transportation options more equitable for all

