

Coastal Rail Emergency Projects Update

Citizens Advisory Committee
April 15, 2025

Reinforcement Areas 1 through 4



Need for Emergency Action

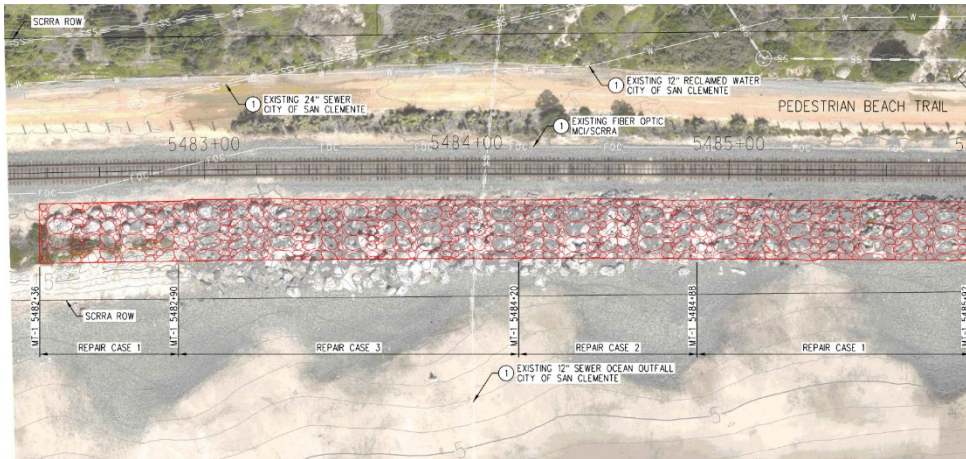
- The project team has observed erosion, landslides, and riprap degradation over the last few months.
- The infrastructure is subject to imminent failure and poses an immediate and serious threat to the railroad, public safety, and national security.

Risks	Impacts
Imminent Threat to Railroad Operations	Erosion and landslides are causing major disruptions to rail service.
Risk to Life and Safety	Landslides and debris pose a direct threat to pedestrians, passengers, and operators.
Progressive and Unpredictable Hazards	Slope instability could lead to sudden and catastrophic failures.
National Security Impacts	Disruption to transportation network for the defense corridor.
Interstate Commerce	Disruptions to transportation of goods.



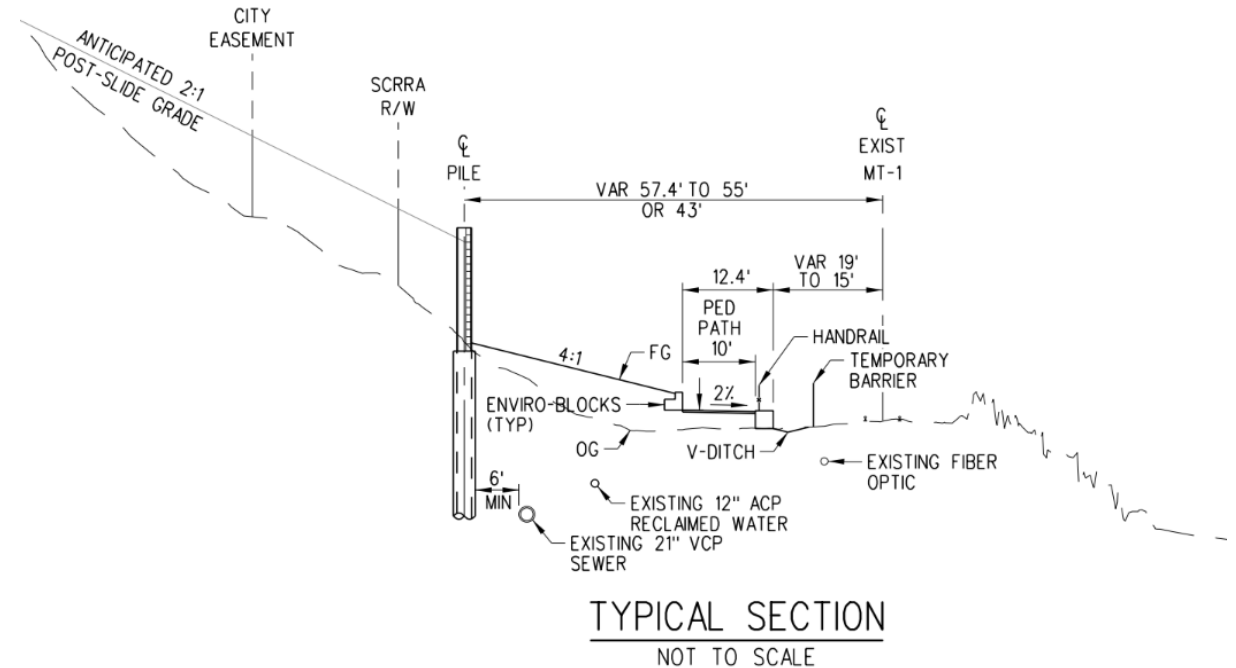
Area 1, 2, and 4 Riprap Repair

- Restore degraded riprap to protect tracks from wave damage and erosion and stabilize embankment to maintain slope integrity.
- Passenger rail service shutdown for up to four weeks for emergency riprap repairs and pedestrian bridge removal.
- Work proposed to be led by Metrolink contractors.



Area 3 Catchment Wall

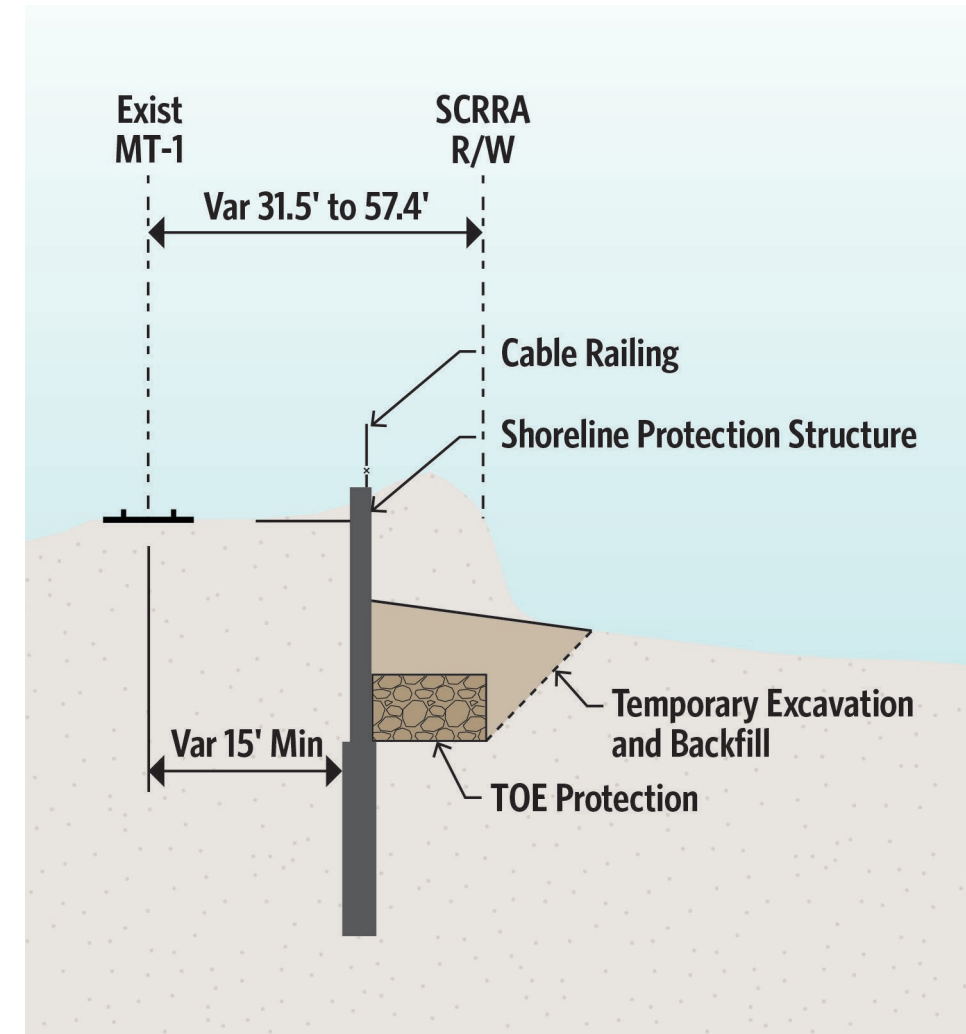
- Remove existing pedestrian bridge.
- Install a 1400-ft long catchment wall to protect track by retaining debris and soil from hillside.
- Construct a new at-grade pedestrian trail, replacing the out-of-service pedestrian bridge.
- The selected design-build contractor will complete this work.
- Construction is expected to be completed within eight months.



Area 3 – Catchment Wall and Pedestrian Trail

Area 4 Shoreline Protection Structure

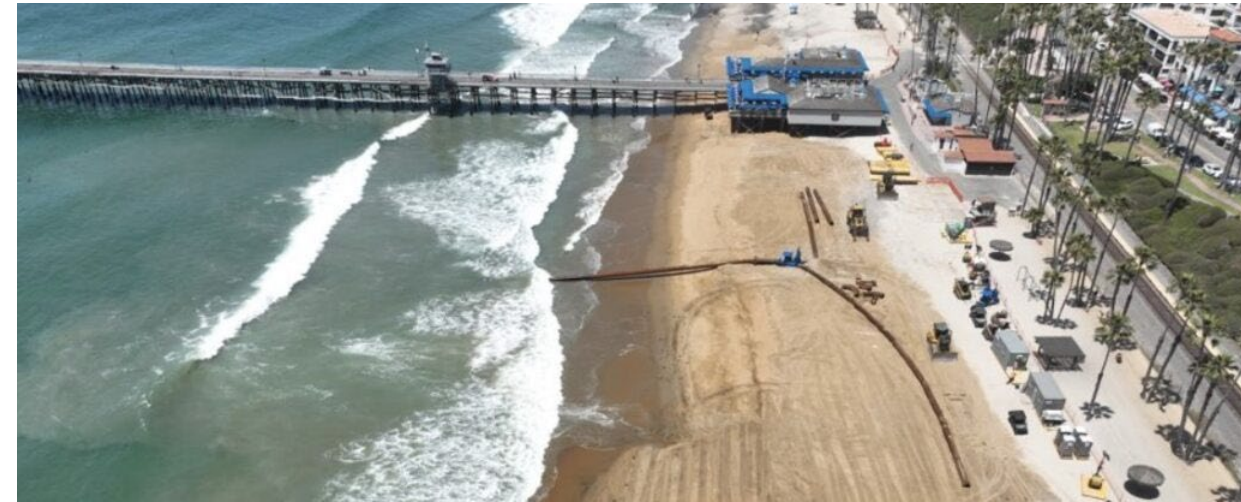
- Install a 1200-ft long shoreline protection structure to protect rail embankment from ongoing scour, erosion, and wave damage.
- All improvements will be constructed within railroad right-of-way.
- The selected design-build contractor will complete this work.
- Construction is expected to be completed within eight months.



Area 4 – Shoreline Protection Structure

Sand Placement

- OCTA released industry Request for Information for potential sand dredging contractors.
- OCTA is securing environmental clearance for offshore source dredging and placement of sand for Areas 1, 2, and 4.
- Evaluating Surfside-Sunset sand borrow source and other nearby offshore sand sources in partnership with City of San Clemente.
- Preliminary Schedule:
 - Environmental and final design approvals: Anticipated Q4 of 2025
 - Invitation for Bids (IFB): Anticipated Q1 of 2026
 - Bids Due Date: Anticipated Q2 of 2026
 - Contract Award and Notice to Proceed: Anticipated Q2 of 2026
 - Project Completion: Anticipated in 2027



Pictures from San Clemente Sand Replenishment Project

Coastal Rail Stabilization Priority Project

QUESTIONS