



## Summer 2018

### Get Ready for New 6C Transponders

### 91 Corridor Improvement Project Chosen as “Freeway/Expressway Project of the Year”

### Show Your Transponder and Save at Family Destinations

### New Toll Adjustments Effective July 1, 2018

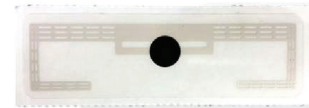
## Get Ready for New 6C Transponders

Many thanks to all the customers who took the time to join us to discuss account plans and 6C, a new 91 Express Lanes improvement coming your way soon.

What is 6C? It’s a state-mandated technology that will be featured in new transponders that will be used on toll lanes throughout California. These new transponders are less expensive, don’t need a battery, and may eventually be used nationally—and they’re available in different forms, including stickers. California state law requires that all California toll agencies begin the transition to 6C January 1, 2019.

To prepare for 6C, make sure to update your account information including vehicle information if you purchased a new car or sold your existing vehicle. It’s easy to make updates at [91expresslanes.com](http://91expresslanes.com).

Look for further updates in the coming months regarding the 6C transition and account plan updates.



6C sticker transponder

## Customer Service Centers

We have two 91 Express Lanes Customer Service Centers to serve you—one in Corona and one in Orange.



### OCTA Store

600 S. Main Street  
Orange, CA 92868

### Store Hours:

Monday – Friday, 8:00 a.m. – 5:00 p.m.

### Corona Customer Service Center

2275 Sampson Avenue, Suite 100  
Corona, CA 92879

### Customer Service Center Hours:

Monday – Friday, 9:00 a.m. – 6:00 p.m.  
(951) 278-9191 | (800) 600-9191

## 91 Corridor Improvement Project Chosen as “Freeway/Expressway Project of the Year”

The State Route 91 Corridor Improvement Project was recognized as the “Freeway/Expressway Project of the Year” by the California Transportation Foundation on May 24. Each year, the California Transportation recognizes projects in several categories for excellence in project delivery and benefit to the motoring public. The Riverside County Transportation Commission, Orange County Transportation Authority, Caltrans and other project partners worked as a team to extend the 91 Express Lanes to offer the first tolling facility in Riverside County. The project also added general purpose lanes, upgraded interchanges and bridges, and built an Express Lane Connector from eastbound 91 to southbound 15 and from northbound 15 to westbound 91, providing a direct link between the two roadways.

The 91 is used by approximately 280,000 vehicles daily, with a projected increase of 140,000 daily vehicles by 2035. In the past, this section of roadway has ranked as high as the top five in the nation for traffic delays. Since opening in March 2017, the 91 Express Lanes are providing customers with a choice and delivering safe, reliable, predictable commute.



The 91 Express Lanes are owned and operated by the Orange County Transportation Authority (OCTA) and the Riverside County Transportation Commission (RCTC). For more information, call (951) 278-9191 or visit [www.91expresslanes.com](http://www.91expresslanes.com)

## Show Your Transponder and Save at Family Destinations

Did you know that your 91 Express Lanes transponder can unlock discounts to great activities in Orange County?

Beat the heat and save on water fun at Davey’s Locker Sportfishing and Whale Watching in Newport Beach and Captain Dave’s Dolphin and Whale Safari, Dana Wharf Sportfishing and Whale Watching, and the Ocean Institute, all in Dana Point.

For a family-pleasing trip, consider beautiful San Juan Capistrano. Kids get into the historic mission free with one paying adult and parents save \$2 off admission to Zoomars Petting Zoo.

Satisfy your quest for culture by visiting some of OC’s most notable historic and artistic places, including Casa Romantica Cultural Center and Gardens in San Clemente, Laguna Art Museum in Laguna Beach, Orange County Museum of Art in Newport Beach, and the Richard Nixon Presidential Library and Museum in Yorba Linda.

For rollicking adventures with knights of old and swashbuckling pirates, head to Buena Park for discounts at Medieval Times and Pirate’s Dinner Adventure.

Drop by [91expresslanes.com/discounts](http://91expresslanes.com/discounts) to view all these great values. Just show your 91 Express Lanes transponder, OC Bus pass or Metrolink ticket and enjoy the discounts during summer and throughout the year.



## New Toll Adjustments Effective July 1, 2018

Each year, tolls are subject to a cost-of-living adjustment (COLA) specified by OCTA and RCTC toll policies approved by each respective Board of Directors. Beginning July 1, tolls will increase 2 percent (rounded up or down to the nearest 0.05 cent increment).

In addition, tolls will continue to be adjusted as needed in Riverside County to ensure optimum traffic flow throughout the day.

The most current rates are always displayed on the signs at the entrances to the 91 Express Lanes, and are also at our website, [91expresslanes.com](http://91expresslanes.com). You can see the rates for every express lane segment, in Orange County, Riverside County or both.

And as always, thank you for being a 91 Express Lanes customer.

The screenshot shows the 91 Express Lanes website interface. At the top, there is a navigation bar with links for 'Getting Started', 'My Account', 'Contact Us', 'FAQ', and 'Contact Us'. Below the navigation bar, there is a main content area with a large banner on the left that says 'View current Toll Schedules' and 'See what you're paying'. To the right of the banner, there is a section titled 'Even finding the right plan is stress-free.' with a sub-headline 'We're here to help you find the right plan for you.' Below this, there are three smaller navigation buttons: 'View Toll Schedules', 'Toll Requirements', and 'Toll Savings'. A blue arrow points from the 'View Toll Schedules' button to the banner area.