

I-605  | Katella
INTERCHANGE



Safer. Smarter. Smoother.

Welcome

Public Hearing

OPEN HOUSE FORMAT

April 24, 2018

6-8 p.m.



octa.net/605katella



I-605 | Katella INTERCHANGE



Safer. Smarter. Smoother.

Station 1

Introduction

I-605 | Katella INTERCHANGE



Safer. Smarter. Smoother.

Project Description

OCTA and Caltrans propose to enhance the local interchange at Interstate 605 (I-605) and Katella Avenue by improving freeway access and street connections, traffic flow and pedestrian and bicycle pathways within the interchange area.

The proposed project is in the Project Approval/Environmental Document (PA/ED) phase, which is commonly known as the environmental study phase.

Two Build Alternatives and one No Build Alternative were studied.



Project Development Team

I-605  | Katella
INTERCHANGE



Safer. Smarter. Smoother.



LEAD AGENCY AND FACILITY OWNER

Lead Agency under California Environmental Quality Act (CEQA) and National Environmental Policy Act (NEPA); Oversees compliance with CEQA and NEPA, and provides ultimate approval of the environmental document and preferred alternative.

dot.ca.gov



PROJECT SPONSOR

Responsible Agency under CEQA; Funds and manages the Project Approval/Environmental Document (PA/ED) phase consistent with OC Go, formerly Measure M, Orange County's local transportation sales tax.

octa.net

TEAM MEMBERS

Provides input and feedback during (PA/ED) phase.



City of Los Alamitos

cityoflosalamitos.org

I-605 | Katella INTERCHANGE



Safer. Smarter. Smoother.

Your Role

Today's Hearing

The purpose of today's hearing is to:

EXPLAIN the project study and proposed alternatives, and address related questions.

HIGHLIGHT project purpose and need.

SUMMARIZE environmental process and study findings.

PROVIDE an opportunity for the public to comment on the draft environmental document.

INVITE the public to stay connected with the project and sign-up for future updates.

Submitting Comments

Comments received during the public review period will be included in the final environmental document.



"Public participation is an essential part of the CEQA and NEPA process and reflects a belief that community members can make important contributions to environmental protections and notions of balanced decision making through wide public involvement."

— California Department of Transportation



Public Review Period

The draft environmental document is available for public review and comment from April 9 to May 8, 2018.

More information on the project study and alternatives can be found at www.dot.ca.gov/d12/DEA/605/0K870.

I-605 | Katella INTERCHANGE



Safer. Smarter. Smoother.

Station 2

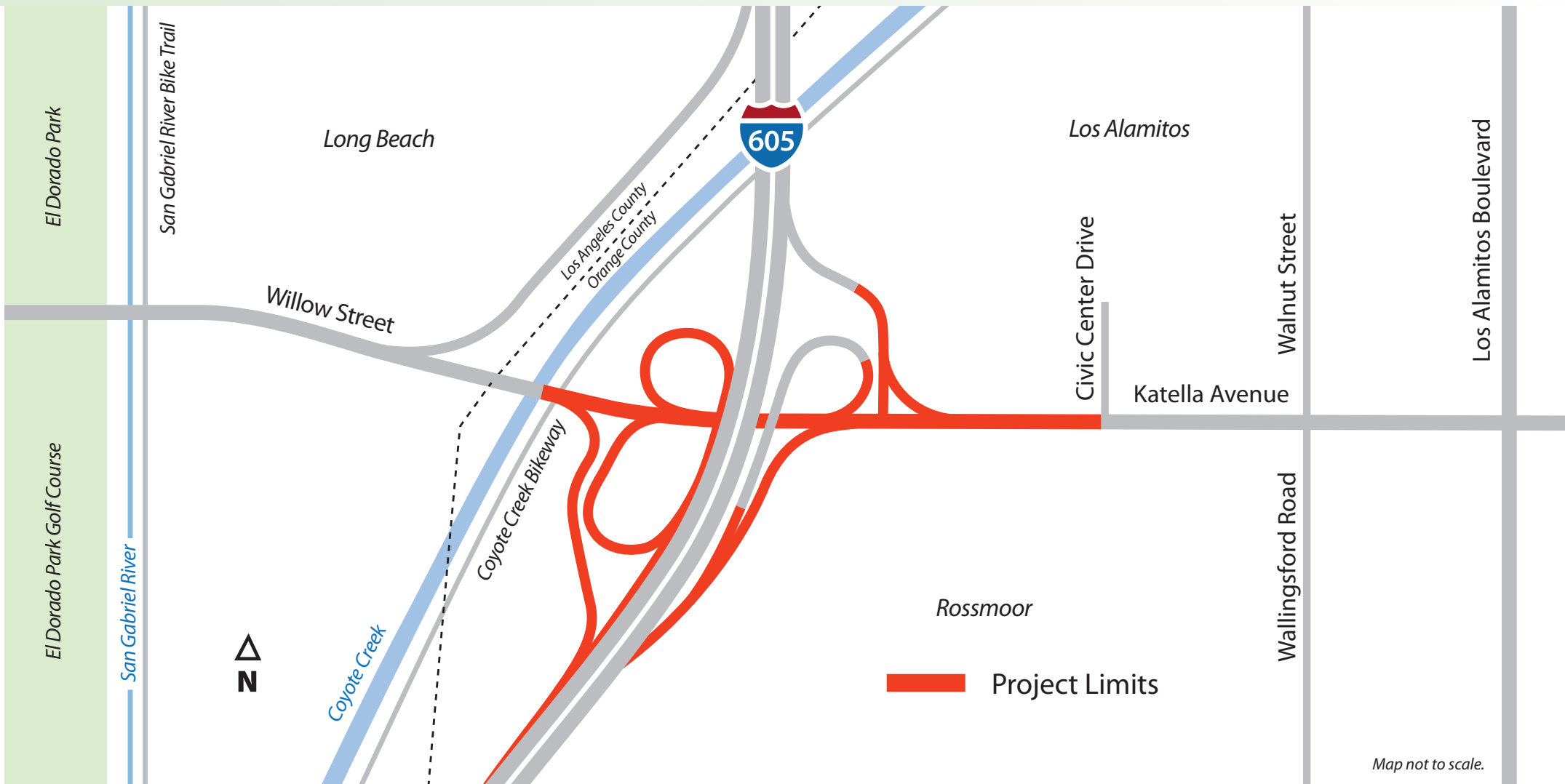
About the Project

I-605  | Katella INTERCHANGE



Safer. Smarter. Smoother.

Project Area



Key Improvements

- Minimizes merging and weaving
- Standardizes lane and shoulder widths
- Adds sidewalks and bike lanes



Purpose & Need

I-605  | Katella
INTERCHANGE



Safer. Smarter. Smoother.

Purpose

The purpose of the project is to:

- Improve interchange traffic operations, and
- Improve pedestrian and bicycle facilities

Need

The I-605/Katella Avenue Interchange currently experiences:

- Roadway and operational deficiencies in the form of inefficient traffic operations, and
- Deficiencies in community mobility for automobiles, pedestrians and bicycle traffic

I-605 | Katella INTERCHANGE



Safer. Smarter. Smoother.

Cost & Funding

Total estimated cost from **\$35 million to \$43 million**, depending on the alternative selected.



OC Go

The project is part of OC Go (formerly Measure M), Orange County's half-cent sales tax for transportation improvements.

The project was identified by the OCTA Board of Directors to be funded with OC Go funds through the Environmental phase to make it shelf-ready for future phases.

The Board will determine funding priorities for future phases. Funding sources could include OC Go, state and federal funds.

I-605 | Katella INTERCHANGE



Safer. Smarter. Smoother.

Station 3

Proposed Improvements (Alternatives)

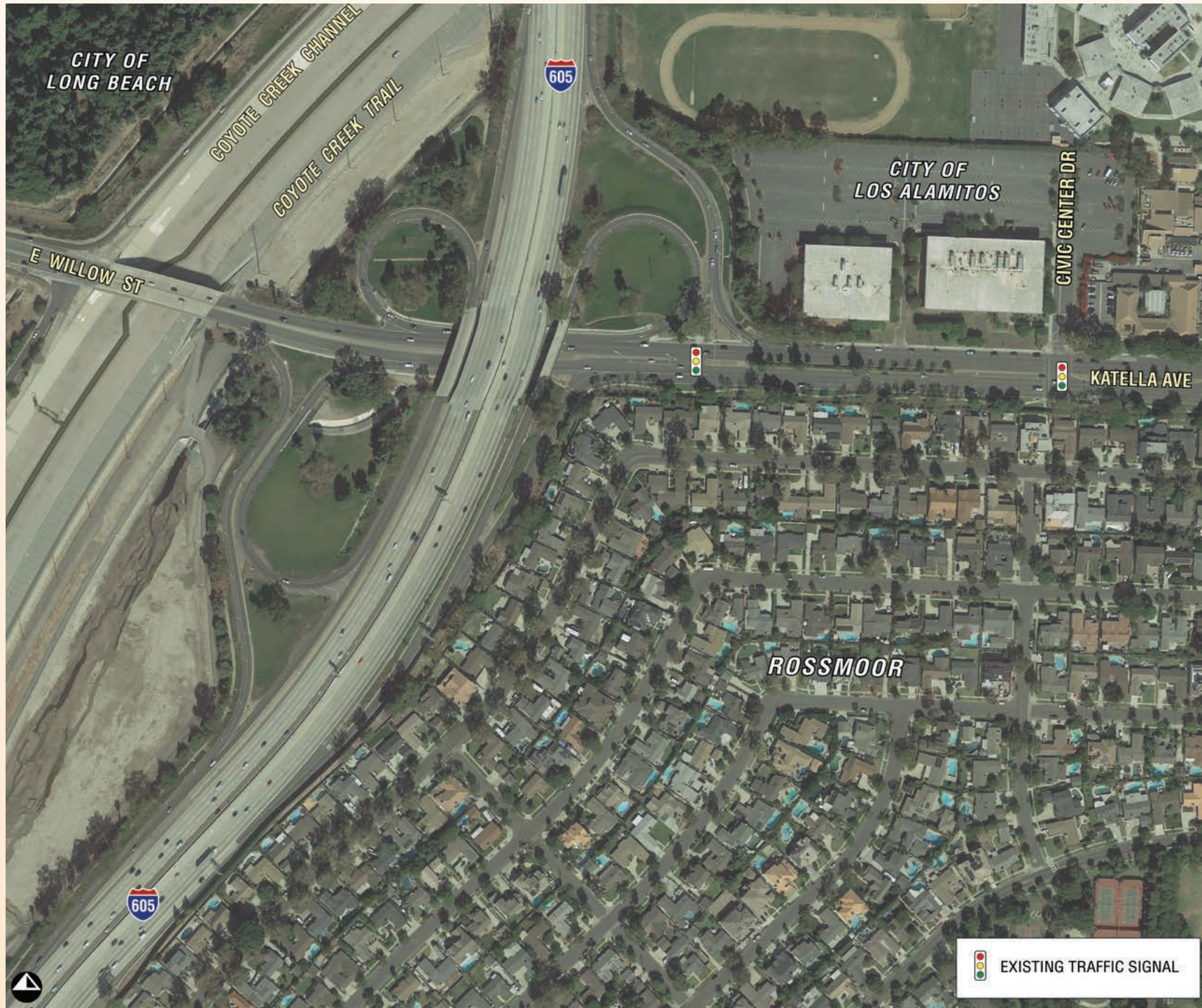


I-605 | Katella INTERCHANGE



Safer. Smarter. Smoother.

Existing Condition (No Build)



I-605 | Katella INTERCHANGE



Safer. Smarter. Smoother.

Alternative 2



I-605 | Katella INTERCHANGE



Safer. Smarter. Smoother.

Alternative 3



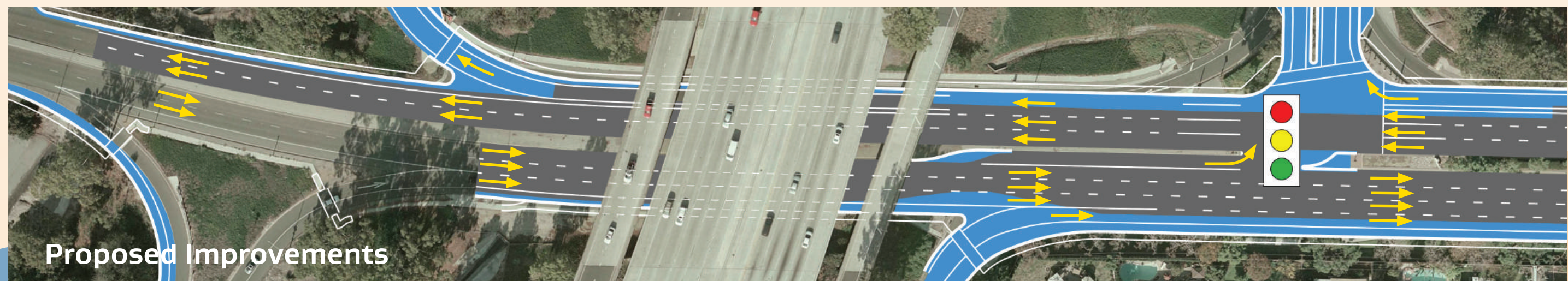
Project Benefits

Alternative 2

I-605 | Katella
INTERCHANGE



Safer. Smarter. Smoother.



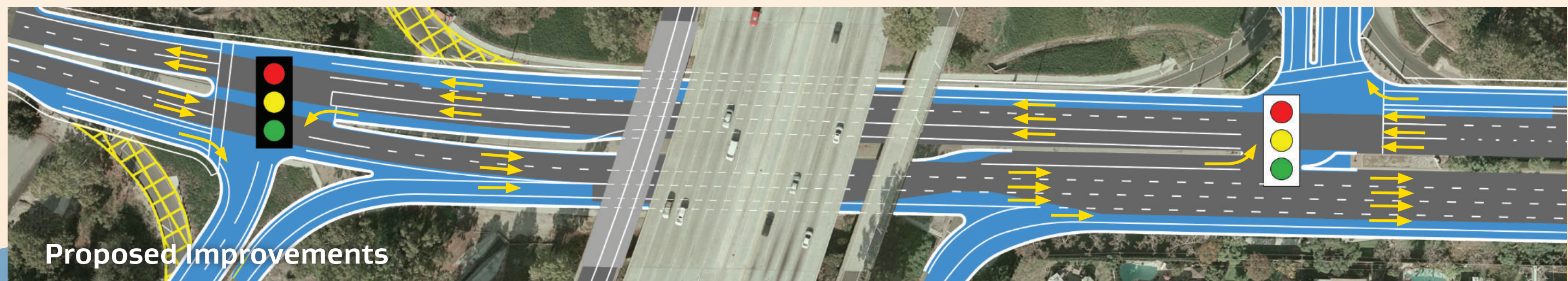
Project Benefits

Alternative 3

I-605  Katella
INTERCHANGE



Safer. Smarter. Smoother.



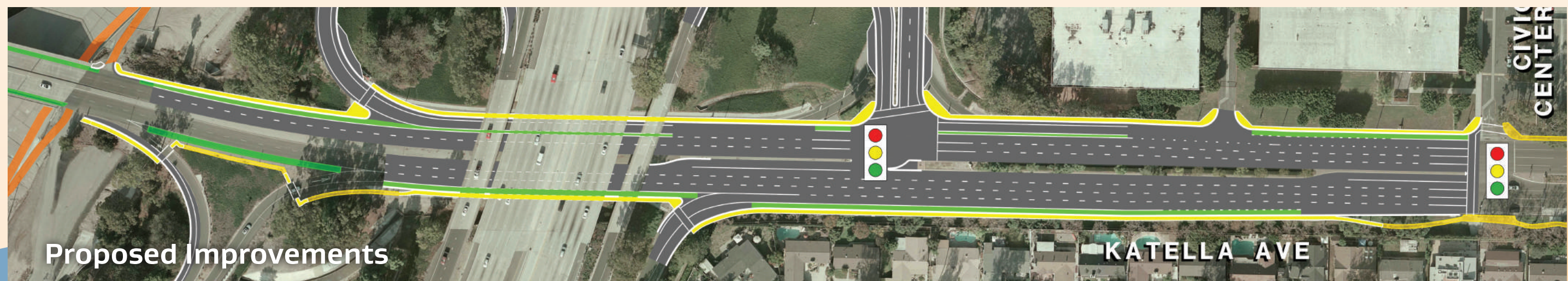
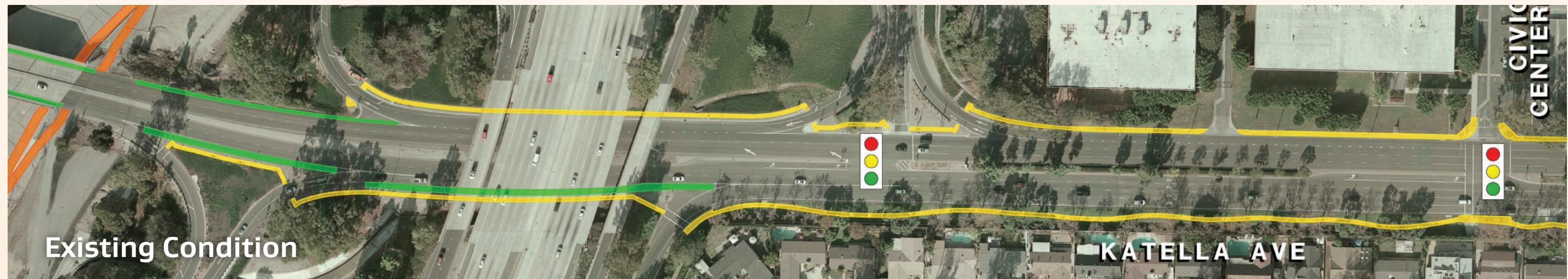
Proposed Bike/Ped Improvements

Alternative 2

I-605 | Katella INTERCHANGE



Safer. Smarter. Smoother.



LEGEND

- █ PROPOSED SIDEWALK
- █ PROPOSED BIKE LANE / SHOULDER
- █ EXISTING SIDEWALK
- █ EXISTING BIKE LANE / SHOULDER
- █ EXISTING TRAIL
- EXISTING TRAFFIC SIGNAL



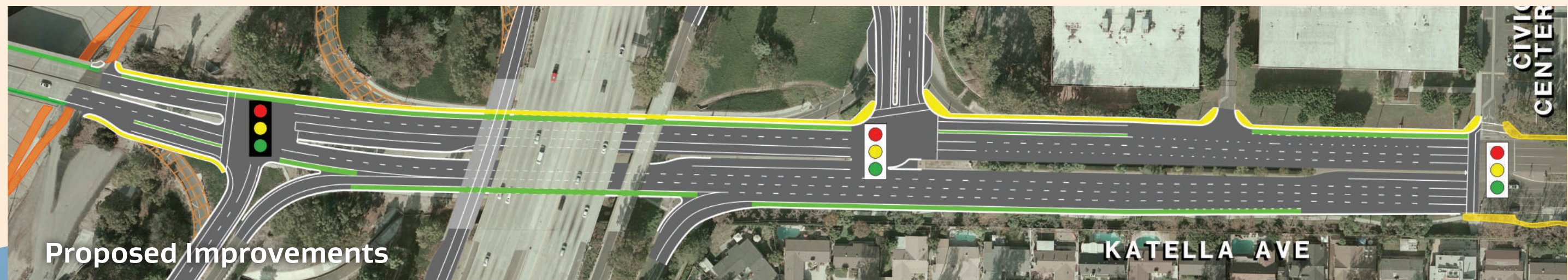
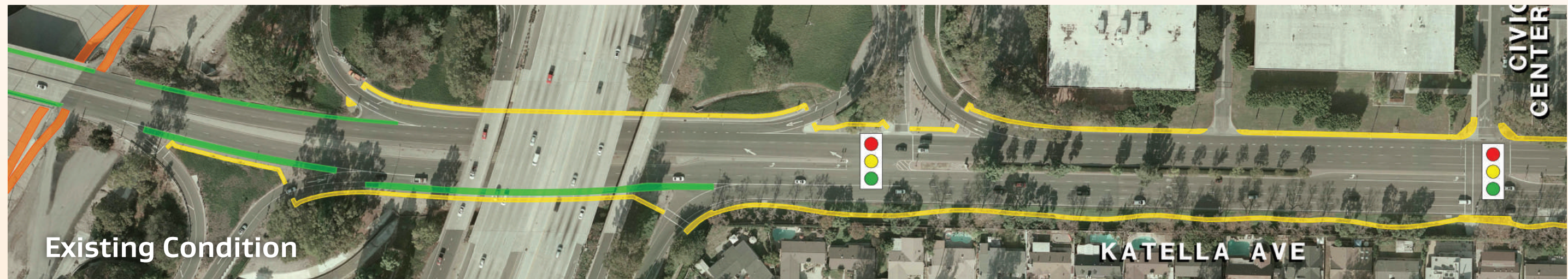
Proposed Bike/Ped Improvements

Alternative 3

I-605 | Katella INTERCHANGE



Safer. Smarter. Smoother.



LEGEND

- PROPOSED SIDEWALK
- PROPOSED BIKE LANE / SHOULDER
- EXISTING SIDEWALK
- EXISTING BIKE LANE / SHOULDER
- EXISTING TRAIL
- EXISTING TRAFFIC SIGNAL



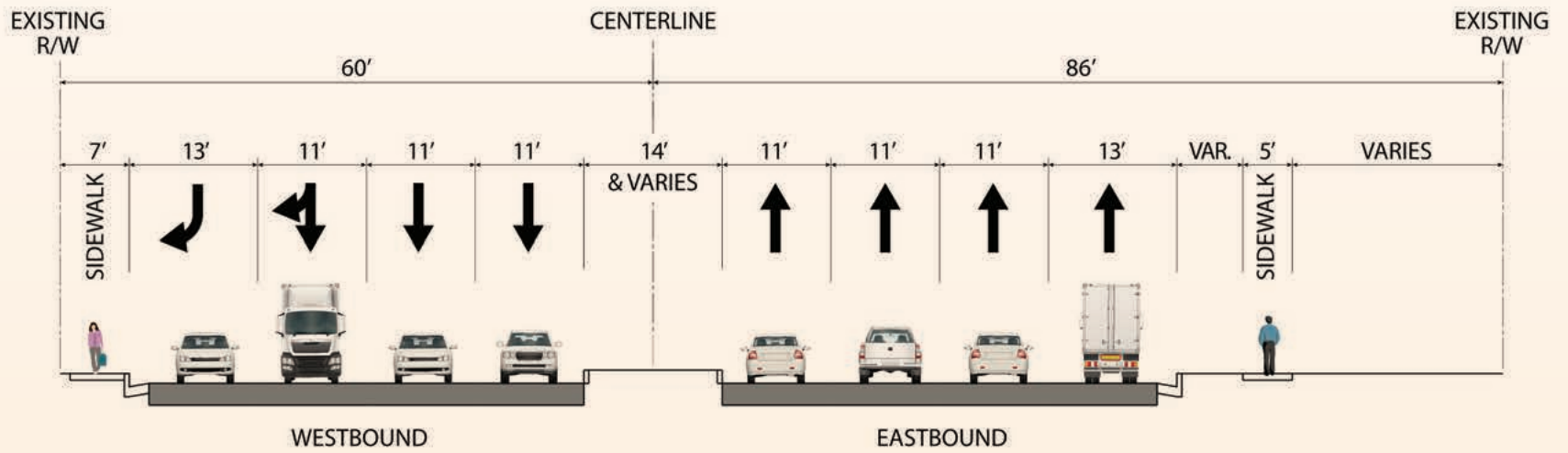
Cross-Section View

I-605  | Katella INTERCHANGE

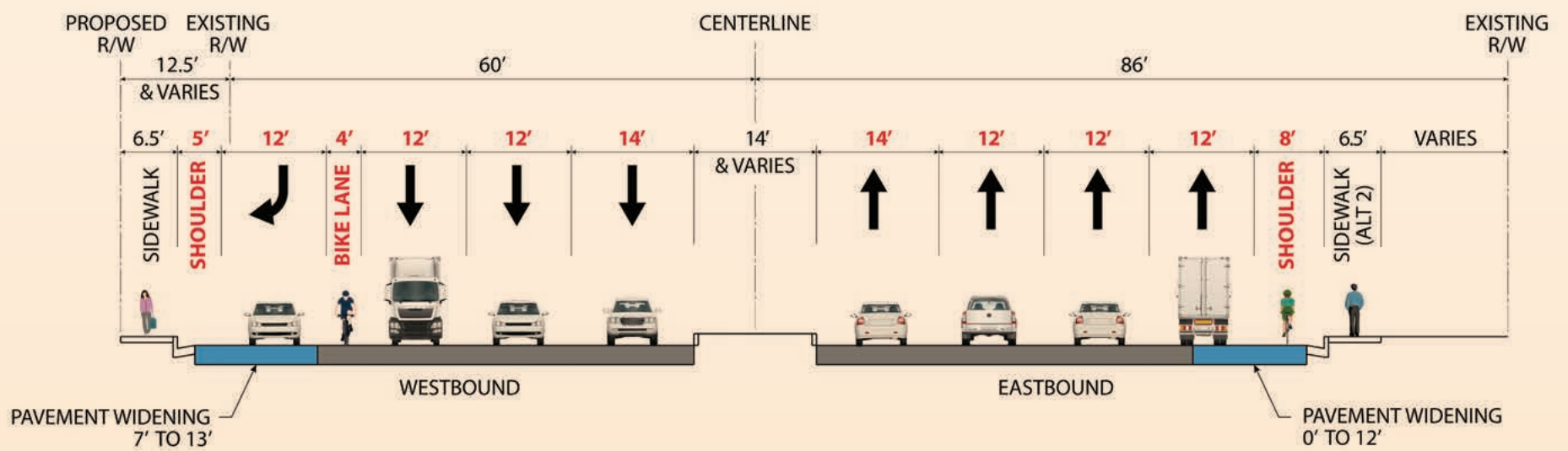


Safer. Smarter. Smoother.

Existing Condition



Proposed Improvements



I-605 | Katella INTERCHANGE



Safer. Smarter. Smoother.

Station 4

Study Results

The Environmental Review Process

I-605  | Katella
INTERCHANGE



Safer. Smarter. Smoother.



Purpose of CEQA and NEPA:

- **Inform** governmental decision-makers and the public about potential, significant environmental effects of proposed projects.
- **Identify** ways that environmental effects can be avoided or significantly reduced.
- **Prevent** significant, avoidable environmental effects by requiring changes in the project through the use of alternatives or mitigation measures when the governmental agency finds the changes to be feasible.
- **Disclose** reasons why an agency approved a project.
- **Promote** and encourage public participation.

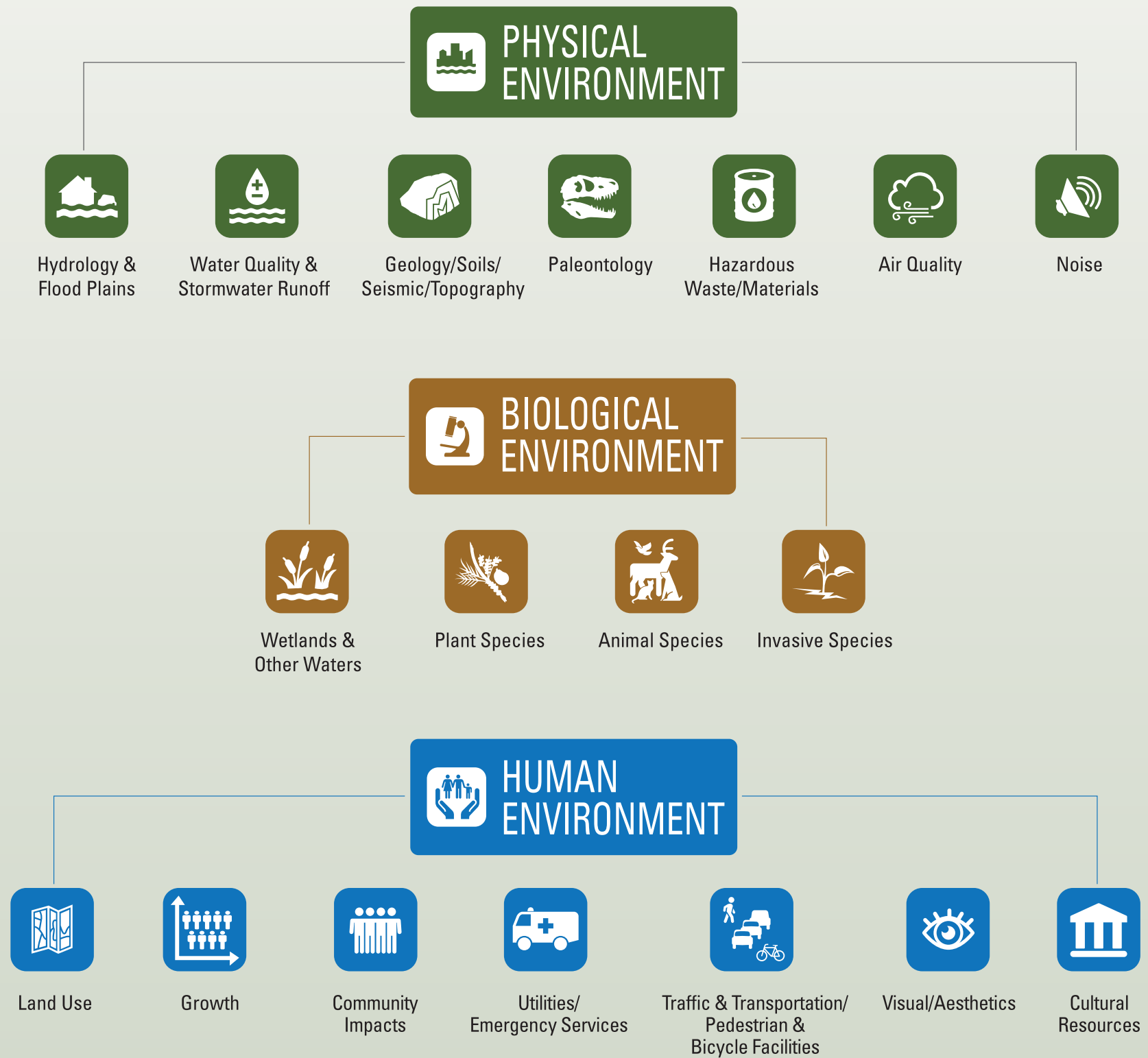
I-605  | Katella
INTERCHANGE



Safer. Smarter. Smoother.

Areas of Study

Potential effects on physical, biological and human environments are measured through numerous technical studies, including, but not limited to:



I-605  | Katella
INTERCHANGE



Safer. Smarter. Smoother.

Project Benefits

	Alternative 2	Alternative 3
Provide two-lane northbound exit	✓	✓
Improve lane drop on westbound (WB) Katella Avenue	✓	✓
Eliminate short merge onto eastbound (EB) Katella Avenue	✓	✓
Standard lane and shoulder widths on Katella Avenue	✓	✓
Widen ramps for truck turns	✓	✓
Widen ramps for storage	✓	✓
Remove free-right turn	✓	✓
Improve geometry for EB Katella Avenue lane addition	✓	✓
Class II and III bike lanes	✓	✓
Complete linkage to Coyote Creek Bike System	✓	✓
Continuous sidewalks	✓	✓
Eliminate uncontrolled pedestrian crossing at ramps		✓
Eliminate WB bicycle/vehicle weave		✓
Eliminate weave and merge onto southbound freeway		✓
Improved lane distribution of traffic on WB Katella Avenue to northbound and southbound entrance ramps		✓



Milestones and Next Steps

I-605  **Katella**
INTERCHANGE



Safer. Smarter. Smoother.

2016

2017

2018



ENVIRONMENTAL PHASE INITIATED

OCTA and Caltrans partnered to analyze the proposed project.



PUBLIC INFORMATION MEETING

A public information meeting was held June 29, 2017, to inform the public about the project.



TECHNICAL STUDIES

Technical experts conducted preliminary design and technical studies for the environmental document.



FINAL ENVIRONMENTAL DOCUMENT (FED)

The draft environmental document will be revised to include but is not limited to the preferred alternative, comments received during the public review period and responses to those comments.



IDENTIFY PREFERRED ALTERNATIVE

The project partners will recommend a preferred alternative.

Where We Are Today



CIRCULATE DED

All technical studies are compiled in a draft environmental document (DED), which is available for public review from April 9 to May 8.



PUBLIC MEETING

During the DED public review period, today's hearing (open house format) is for members of the community to see information, discuss the project with representatives and provide documented feedback.



I-605 | Katella INTERCHANGE



Safer. Smarter. Smoother.

Station 5

Public Participation



I-605 | Katella INTERCHANGE



Safer. Smarter. Smoother.

Get Involved

COMMENT DEADLINE: May 8, 2018

Written comments submitted during the public review period will be considered in finalizing the environmental document.

Comments will be recorded and responded to within the final environmental document.

Responses will be available in the approved final environmental document, anticipated to be released in late 2018.

Submit: complete your comment card today and leave in the Comments box.

Speak: offer your comment verbally today to the designated court reporter.

Email: send your comment prior to the deadline via email at D12.605Katella@dot.ca.gov

Mail: forward your comment prior to the deadline via mail to Gabriela Duran, Caltrans District 12, Division of Environmental Analysis, 1750 E 4th Street, Suite 100, Santa Ana, CA 92705.



I-605  | Katella
INTERCHANGE



Safer. Smarter. Smoother.

Title VI Survey



This survey has 12 multiple choice questions and takes about 60 seconds to complete.

VOLUNTARY AND ANONYMOUS SURVEY

Title VI of the Civil Rights Act of 1964 prohibits discrimination on the basis of race, color or national origin in programs or activities receiving federal financial assistance.

Under Title VI, this survey is designed to provide us with socioeconomic information to ensure that our projects do not disproportionately impact certain communities more than others.

By taking this survey, you are helping OCTA and Caltrans identify potential discriminatory impacts early which will minimize and reduce negative impacts to minority and low income populations, as well as delays to project delivery.

I-605 | Katella INTERCHANGE



Safer. Smarter. Smoother.

Stay Connected

Learn more online



octa.net/605katella

Sign up to receive Project Alerts



605KatellaInfo@octa.net

Follow the Project on Social Media



facebook.com/605katella



[@605katella](https://twitter.com/@605katella)



[605katella](https://www.instagram.com/605katella)

Questions? Call the Project Helpline



(800) 724-0353



Christina Pirruccello

Community Relations
Specialist, Associate



Chris Boucly

Community Relations Officer



Jeannie Lee

Project Manager



I-605 | Katella INTERCHANGE



Safer. Smarter. Smoother.

Station 6

Your Comments

