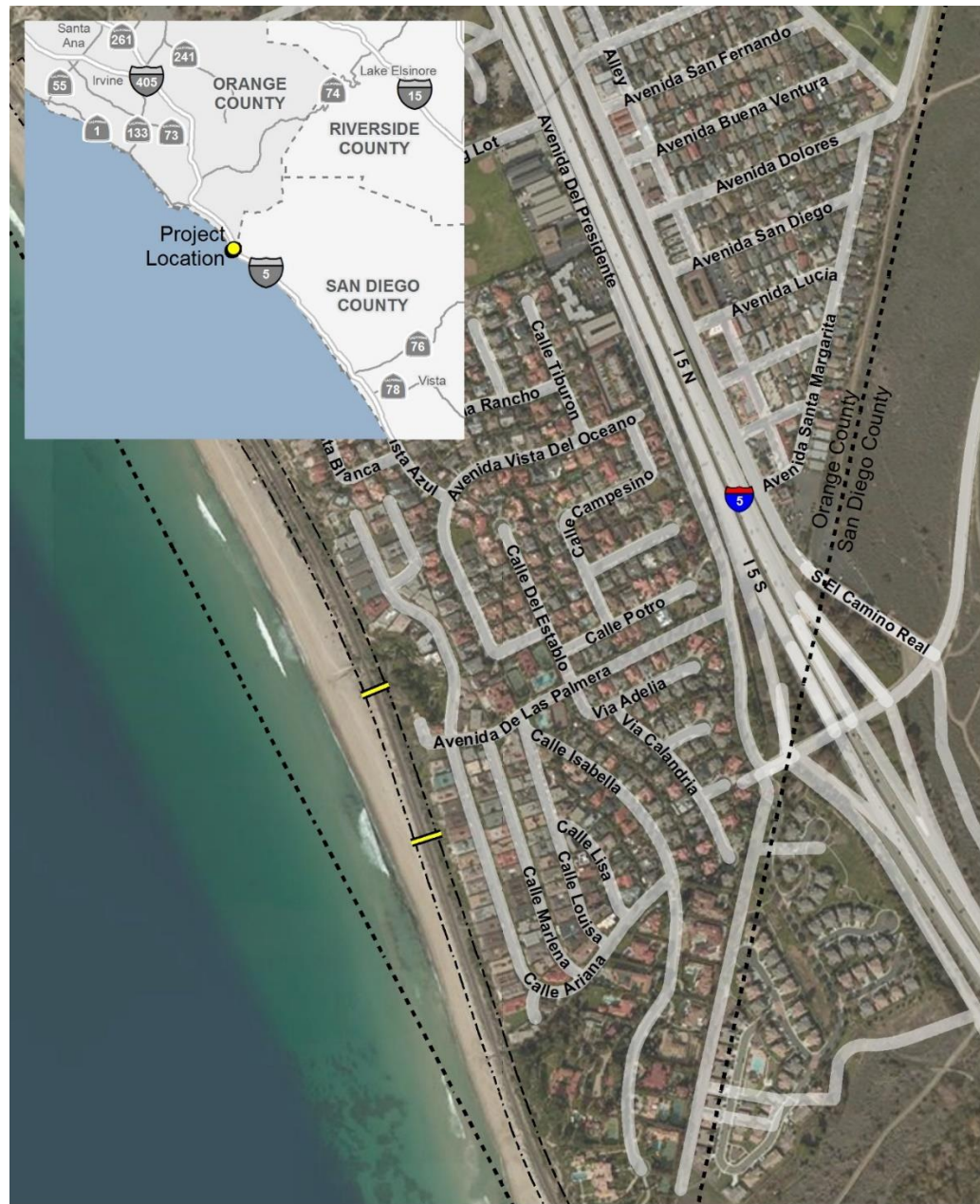


Project Location



- Approximate Project Limits
- - - Rail Right-of-way
- - - County Boundary



0 Feet 500



Project Location



Track Deflection

Based on daily geotechnical monitoring of the railroad, track deflection has been substantially reduced.





9/24/21

Status of Emergency Repair

1. Approximately 10,000 tons or riprap to be placed by COB
Wednesday, 9/29
2. Riprap placement anticipated to be completed by Friday, 10/1
3. Surveys will be ongoing to determine if track deflection continues
4. Geotech borings (east side of tracks)
5. Track realignment work planned for this weekend
6. Passenger Service

October 4th
(tentative)

