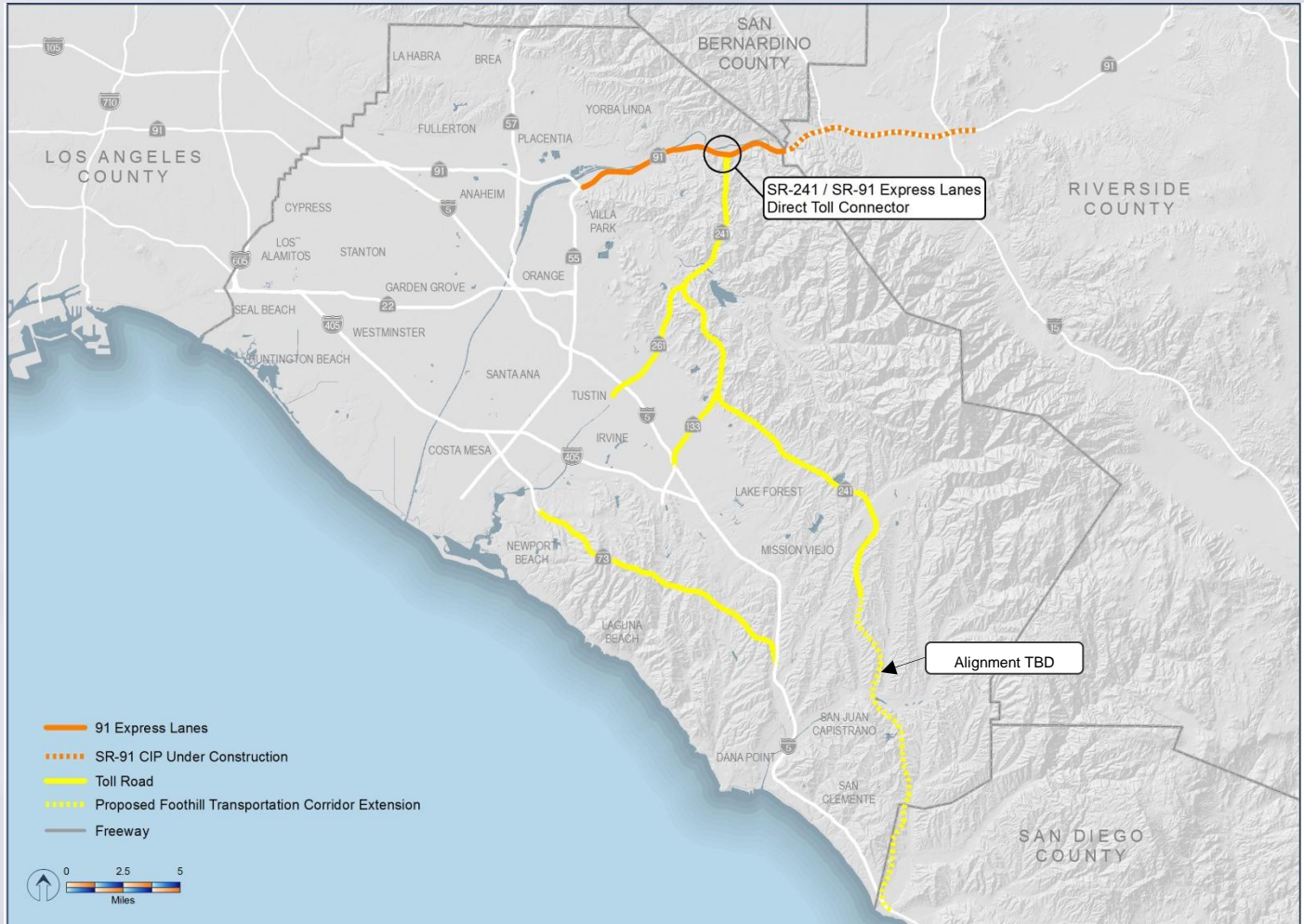




State Route 241/State Route 91 Study Update

SR-241/SR-91 Express Lane Connector PA/ED Overall Location Map



SR-241 – State Route 241

SR-91 – State Route 91

PA/ED – Project Approval /
Environmental Document

SR-241/SR-91 Express Lane Connector PA/ED Study Area



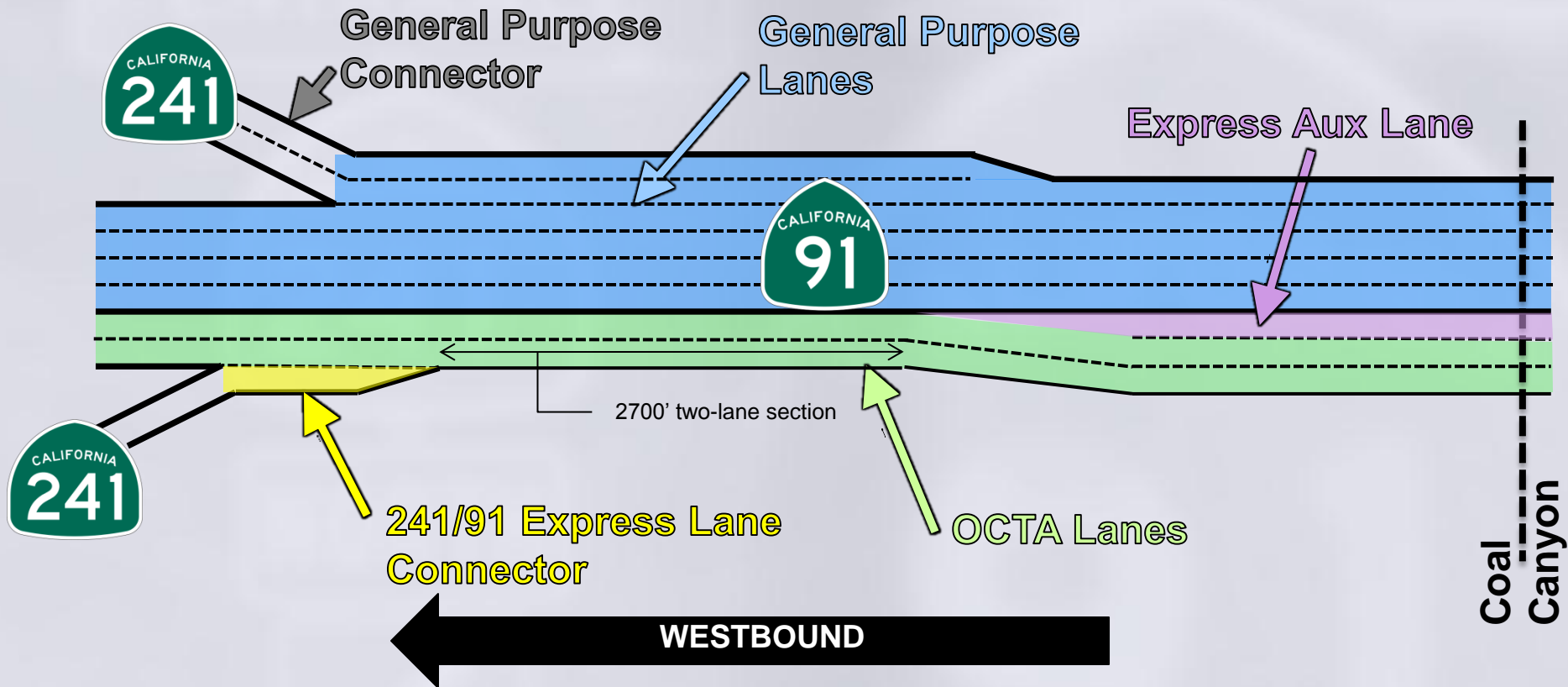
SR-241/SR-91 Express Lane Connector PA/ED Overview of Work-to-Date

◆ Overview of work-to-date:

- PSR/PDS completed/approved January 2012
- Environmental and engineering technical studies underway
- PA/ED initiated November 2013 (Approximately 25% complete)
- Multiple scenarios/multiple design variations being studied
- Ongoing coordination with RCTC, Caltrans, and FHWA
- Traffic Study
 - Successful partnering with OCTA to address comments (i.e. westbound Express Lanes capacity concerns)
 - Revisions incorporated that satisfies all stakeholders

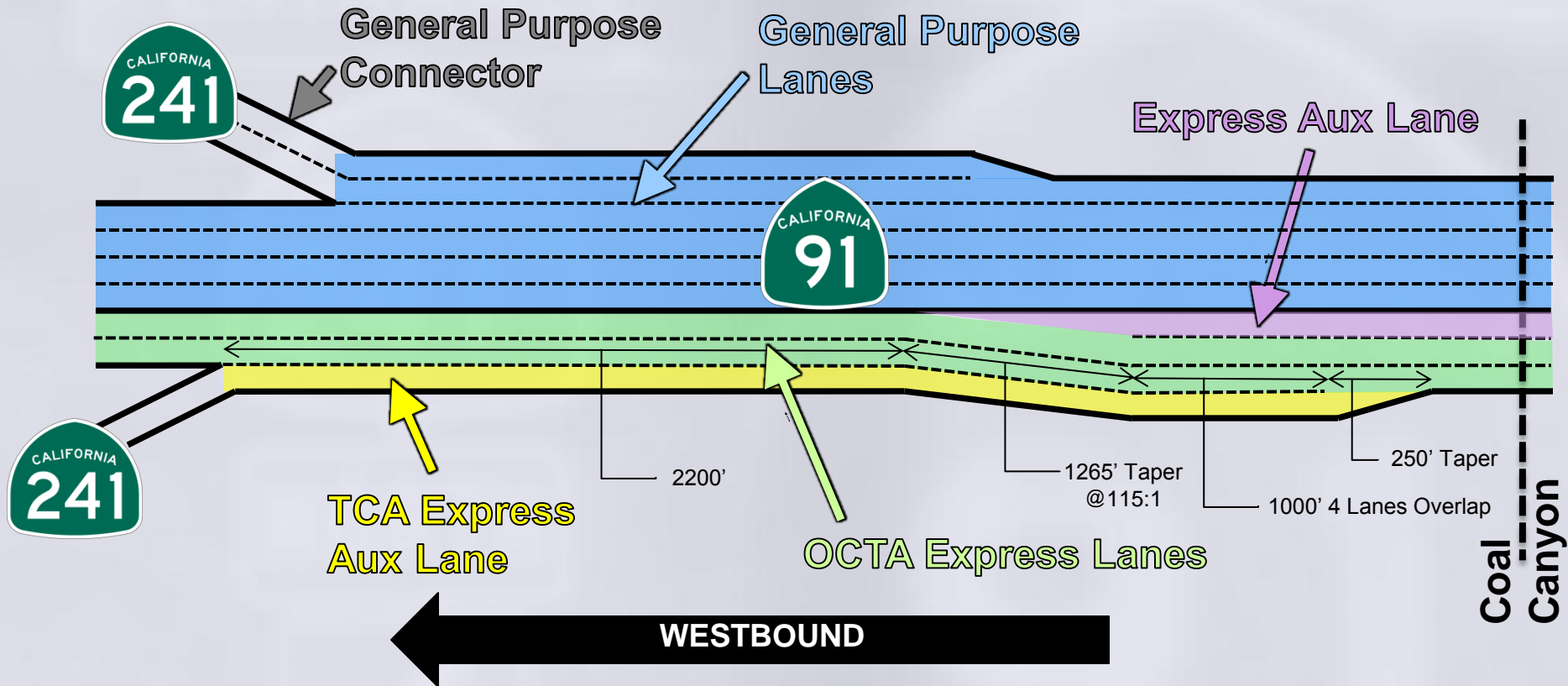
SR-241/SR-91 Express Lane Connector PA/ED Westbound Express Lanes (Base Design)

Westbound Express Lanes Geometry (with 2-lane Express Lanes section)



SR-241/SR-91 Express Lane Connector PA/ED Westbound Express Lanes (Design Solution)

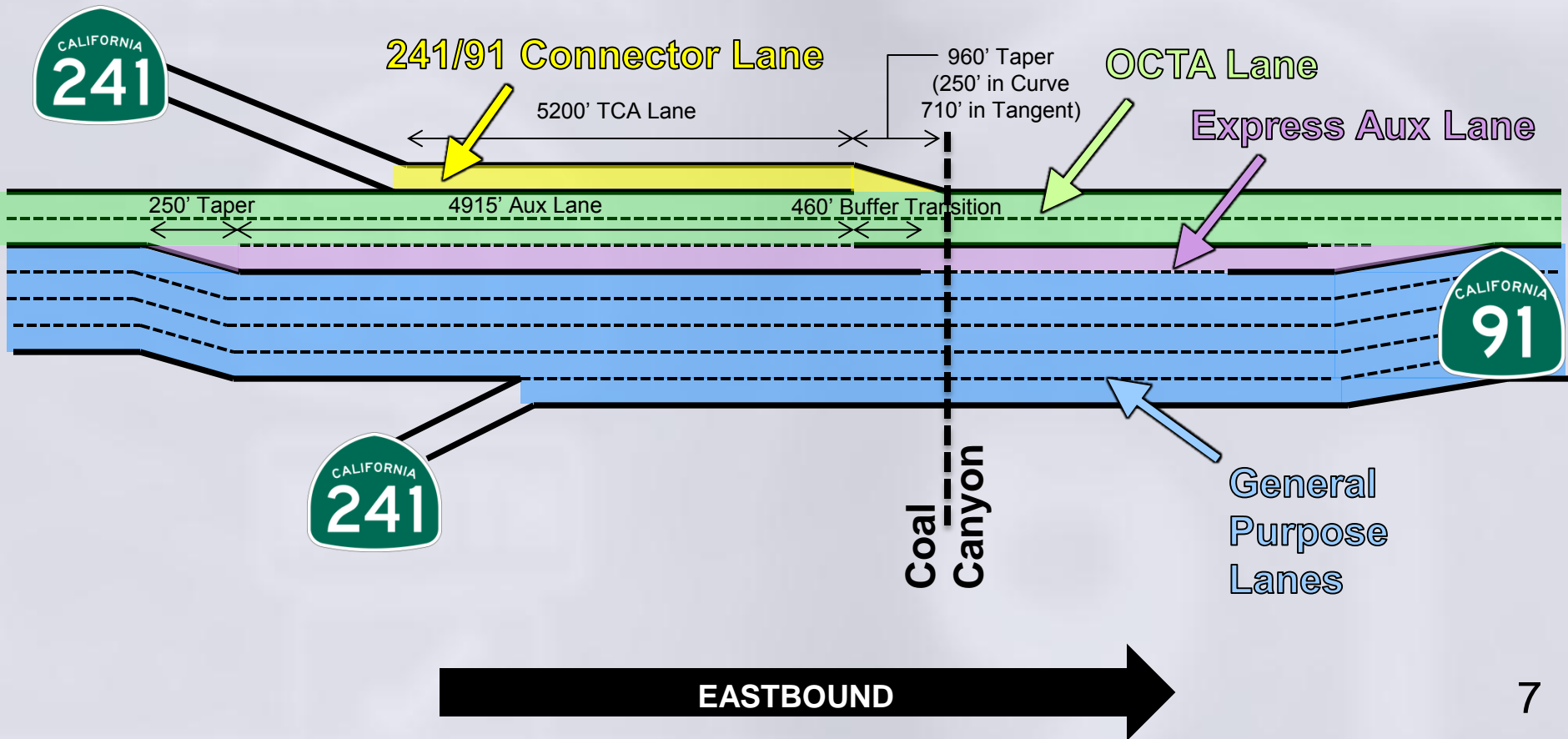
Westbound Express Lanes Geometry
(adjusted to 3-lane Express Lanes section)



SR-241/SR-91 Express Lane Connector PA/ED Eastbound



Eastbound Express Lanes Geometry (Coal Canyon Limit)





SR-241/SR-91 Express Lane Connector PA/ED Work-in-Progress

- ◆ Design and Concept of Operations:
 - Successful collaboration with stakeholders on final adjustments and refinements
 - Project accommodates ultimate SR-91 Corridor Improvement Project improvements
 - ConOps workshops with stakeholders, including FHWA, held to identify concerns, issues, and questions
 - Preparing a series of ConOps technical memorandums to address each policy issue
 - Successful partnering with Caltrans on review and concurrence of studies
 - Minor adjustments to approved studies due to revised and refined geometry



SR-241/SR-91 Express Lane Connector PA/ED Upcoming Tasks

◆ Upcoming Tasks:

- Technical studies being submitted for review
- TCA will be working with OCTA on the Traffic and Revenue Study
- Draft Project Report and Draft Supplemental EIR/EIS release in fall 2015



SR-241/SR-91 Express Lane Connector PA/ED Anticipated Schedule

◆ Anticipated Schedule

- Value Analysis Session – Spring 2015
- Traffic and Revenue Study – Fall 2015
- Draft Project Report – Fall 2015
- Draft Supplemental EIR/EIS – Winter 2015
- Final Project Report – Fall 2016
- Final Supplemental EIR/EIS – Fall 2016
- Construction – Fall 2017 – Winter 2018