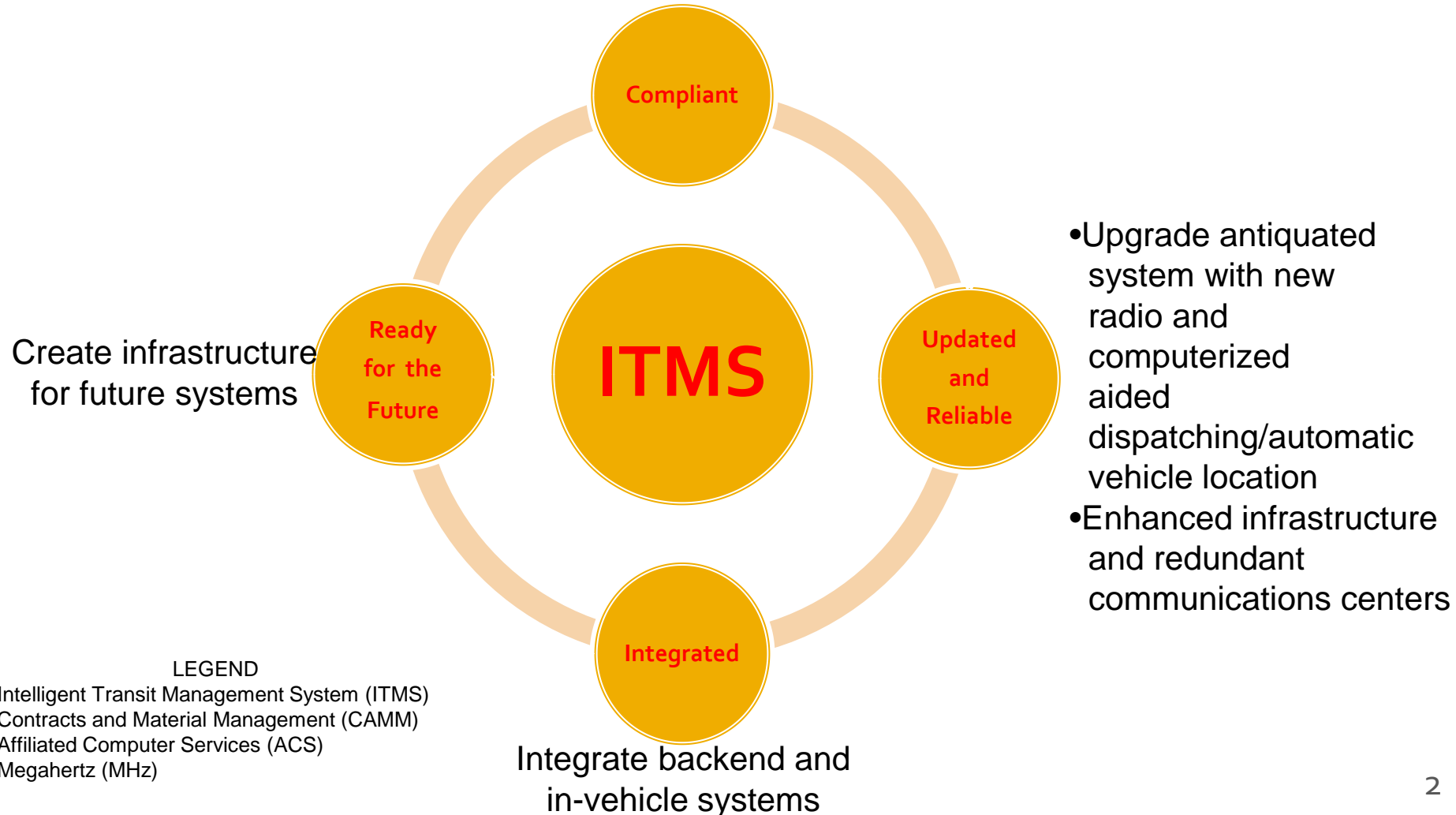


# Intelligent Transit Management System Project Status Report

# Project Objectives

Comply with Federal Communications Commission  
narrowbanding mandate - January 1, 2013



# Project History

Actions Taken	2006				2007				2008				2009				2010				2011				2012			
	1	2	3	4	1	2	3	4	1	2	3	4	1	2	3	4	1	2	3	4	1	2	3	4	1	2	3	4
EIGER TechSystems conducts study																												
EIGER TechSystems completes study																												
Board approves ITMS project																												
CAMM issues sole source contract with ACS – complete negotiations																												
Board approves sole source contract with ACS																												
Project kick off – begin development																												
ITMS projected completion																												



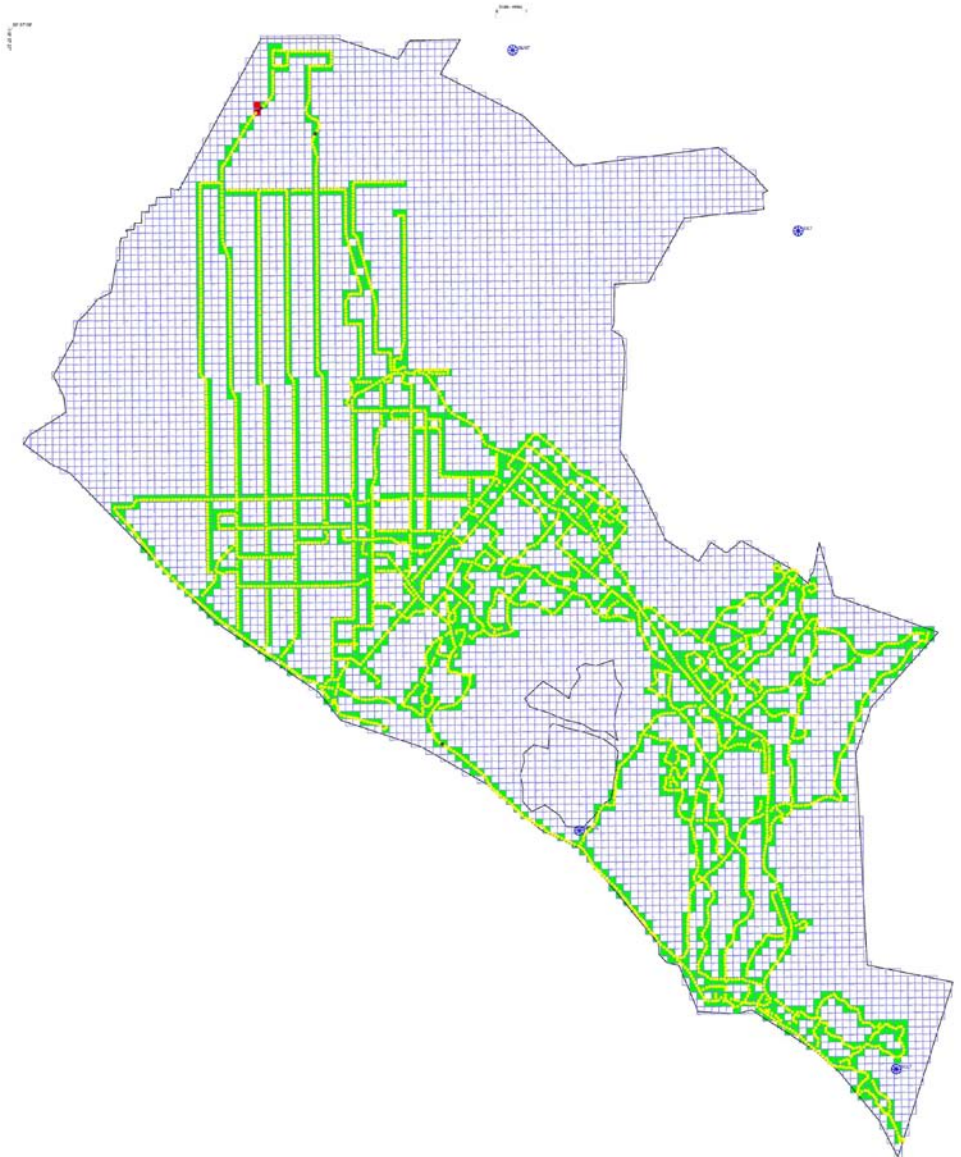
# Tasks Completed

Date Started/Completed	Description of Task
January 6, 2012	Successfully completed the factory acceptance test and resolved all test failure report category zero and one.
March 6, 2012	Completed the installation of fixed end servers, console furniture, and console workstations at the two central communications facilities (five units at Construction Circle and two units at Garden Grove Annex)
March 20, 2012	Completed installation of on-board equipment on two fixed route buses, two ACCESS service buses, and one non-revenue vehicle for operational testing purposes.
March 29, 2012	Completed systems administration training of OCTA technical team
March 30, 2012	Successfully conducted pre-coverage testing along Pacific Coast Highway from Long Beach to San Clemente.
May 4, 2012	Harris Corporation officially released the production version of the radio software, version R19Ao6, which will be used in ITMS
May 22, 2012	Officially started coverage testing of the entire service area. This test will be conducted for the next six weeks, ten hours a day, six days a week to test radio signal and strength on all fixed routes and all grids serviced by ACCESS.

# Results of Coverage Testing on 5/22/2012 to 5/26/2012

## Contract Specifications:

- Coverage Requirement – 95
- Signal Strength – Neg 104



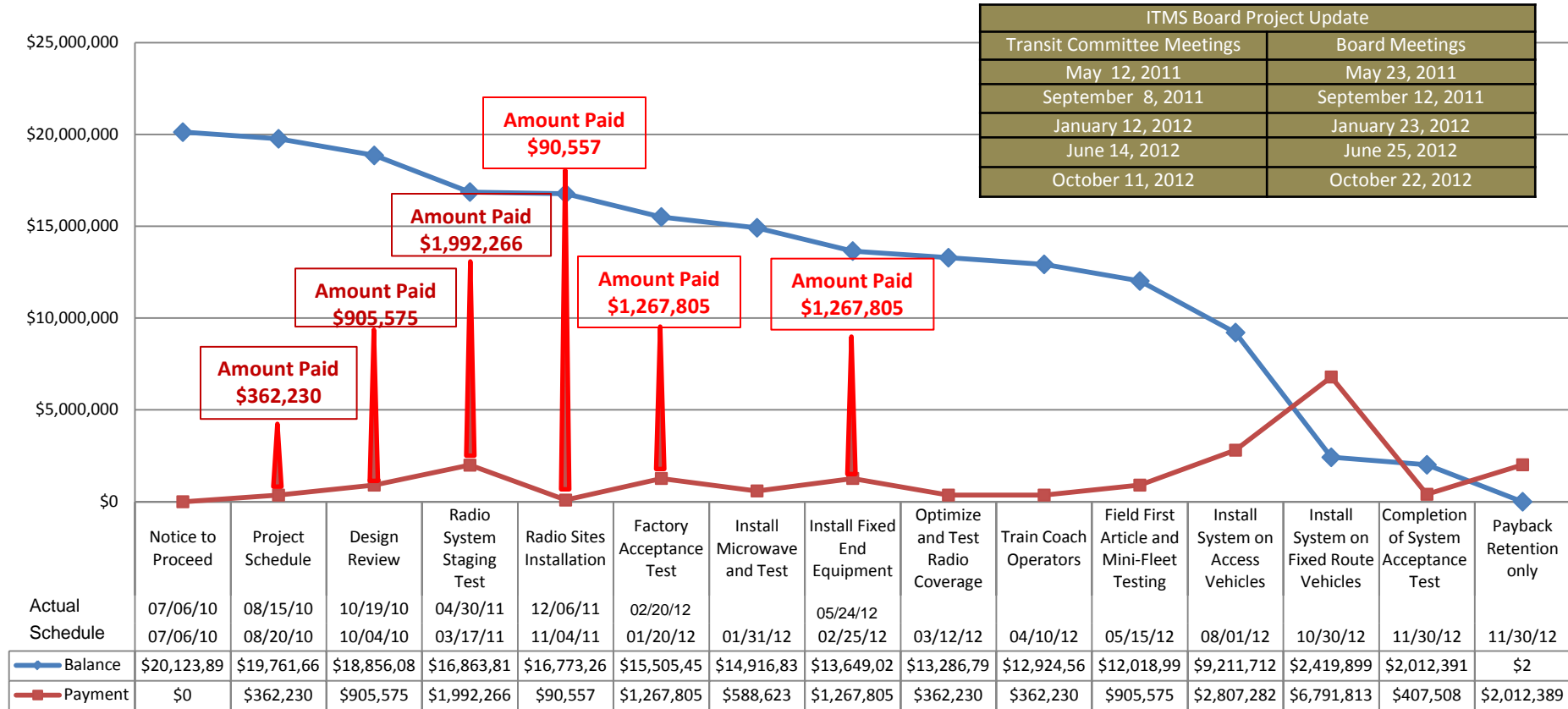
# *New Features for both Fixed Route and ACCESS service*

- ❖ Better coverage and voice clarity with two radio frequency – 800 MHz and 700 MHz
  - New mobile radio will output twice the radiated power as existing mobile
  - High site power output increases to 100 watts vs. 75 watts in old system
  - New site at Olinda Peak will provide coverage for Pomona Fairplex, Los Angeles, and North Orange County
  - All OCTA vehicles (ACCESS vehicles included) under one radio/CAD/AVL system
- ❖ More reliable system with two Central Communication facilities (Garden Grove and Construction Circle) both with five console stations
- ❖ Redundant communications system with microwave and Opt-E-Man system
- ❖ Integrated back-end system with employee records from OCTA, MV Transit, and Veolia fed into the CAD/AVL system to support single logon feature
- ❖ Bigger Mobile Data Terminal in color and touch screen
- ❖ Voice and data radio with texting capability and canned messages for easier communications
- ❖ Automatically notifies maintenance and radio dispatcher when system detects possible critical bus component failure
- ❖ Shares access point resources with on-board video surveillance system

# Service Specific Features

Fixed Route Operation	ACCESS Service
❖ Downloads bus stop announcement data using the WLAN instead of manual loading of data to individual buses	❖ Provides operator with map display and turn by turn direction instead of using Thomas Brother's map
❖ Infrastructure for future automation (garage management, pre-trip inspection, Real Time Passenger Information System, etc.)	❖ Individual radio calls between operator and radio dispatcher instead of an open system

# Project Key Milestones Schedule/Budget



ITMS Revised Projected Completion Date – November 30, 2012 ■ - To be paid at the completion of task  
 FCC Narrow banding – January, 2013



# Outstanding Tasks/Next Steps

Milestone Tasks	May 2012		June 2012				July 2012				Aug 2012				Sep 2012				Oct 2012				Nov 2012				Dec 2012				Jan 2012			
Coverage testing																																		
Train operators and radio dispatchers																																		
Mini-fleet testing																																		
Installation on ACCESS buses																																		
Installation on fixed- route buses																																		
Final acceptance testing																																		
Sign off																																		