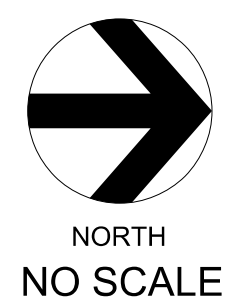


State College Grade Separation

Project Layout

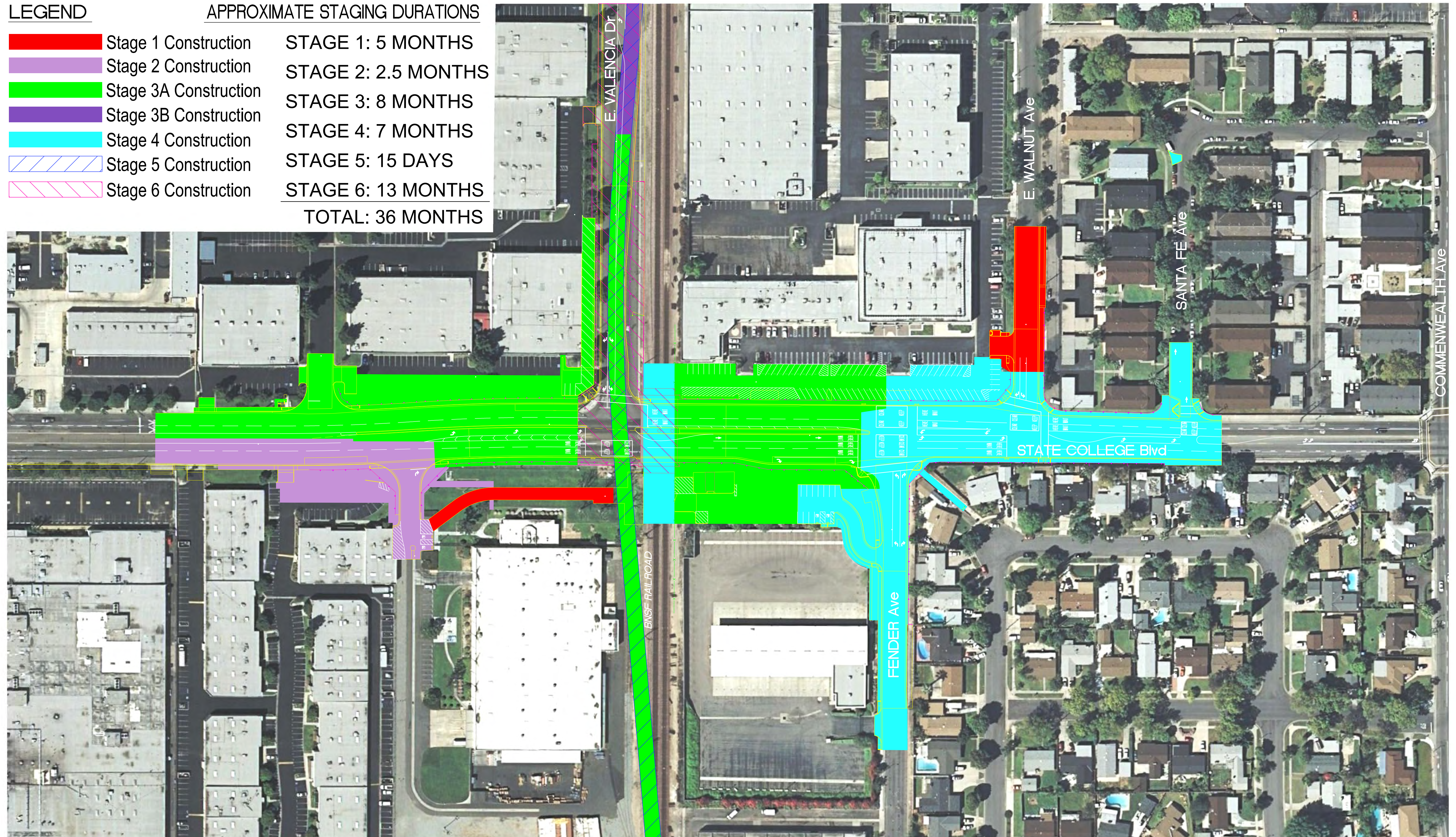


LEGEND

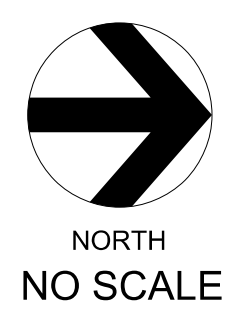
- Stage 1 Construction
- Stage 2 Construction
- Stage 3A Construction
- Stage 3B Construction
- Stage 4 Construction
- Stage 5 Construction
- Stage 6 Construction

APPROXIMATE STAGING DURATIONS

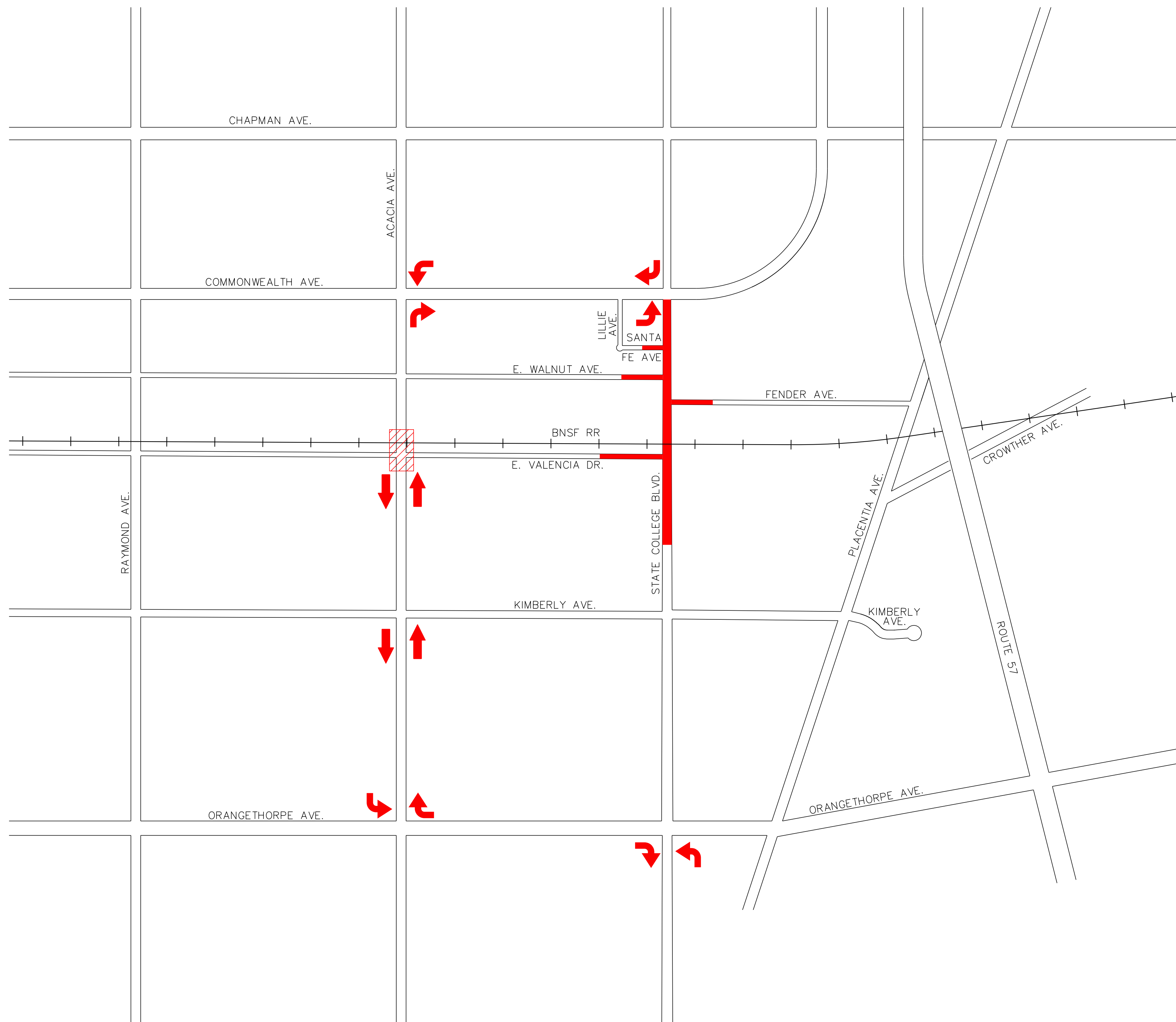
- STAGE 1: 5 MONTHS
- STAGE 2: 2.5 MONTHS
- STAGE 3: 8 MONTHS
- STAGE 4: 7 MONTHS
- STAGE 5: 15 DAYS
- STAGE 6: 13 MONTHS
- TOTAL: 36 MONTHS**



State College Grade Separation
Composite Construction Staging Exhibit



April 2014



Detour Route
 (SB State College Blvd.)

- West on Commonwealth Ave.
- South on Acacia Ave.
- East on Orangethorpe Ave.

Detour Route
 (NB State College Blvd.)

- West on Orangethorpe Ave.
- North on Acacia Ave.
- East on Commonwealth Ave.

LEGEND:

- DIRECTION OF DETOUR TRAFFIC
- WORK AREA DETOUR BY OTHERS
- LIMITS OF FULL CLOSURE

State College Grade Separation
 Detour Route Exhibit



April 2014