



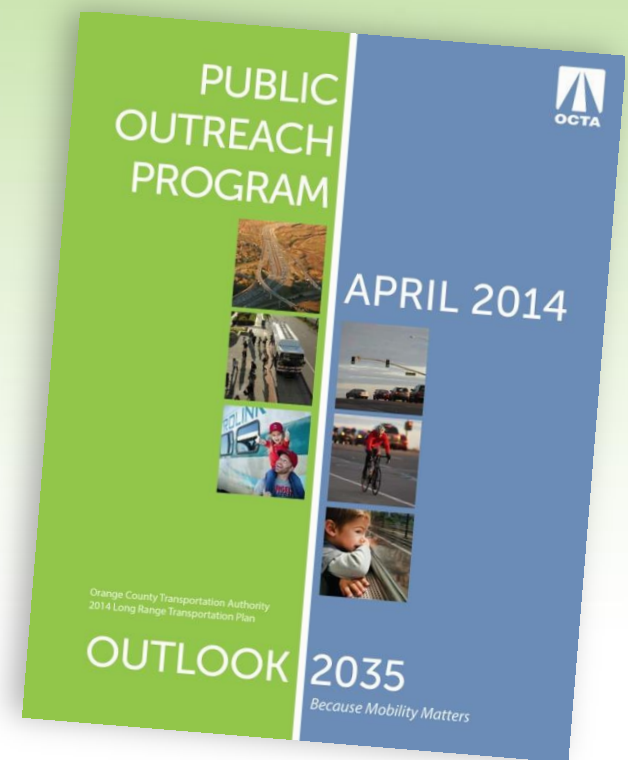
# Draft 2014 Long-Range Transportation Plan

## OUTLOOK 2035

Because Mobility Matters

# 2014 LRTP

- Transportation vision document
- Updated every four years
- Input for the RTP
- Must consider:
  - Stakeholder input
  - Socioeconomic forecasts
  - Revenue forecasts
  - Current commitments
  - State and federal mandates
  - Regional coordination
  - Technology developments



LRTP – Long-Range Transportation Plan  
RTP – Regional Transportation Plan

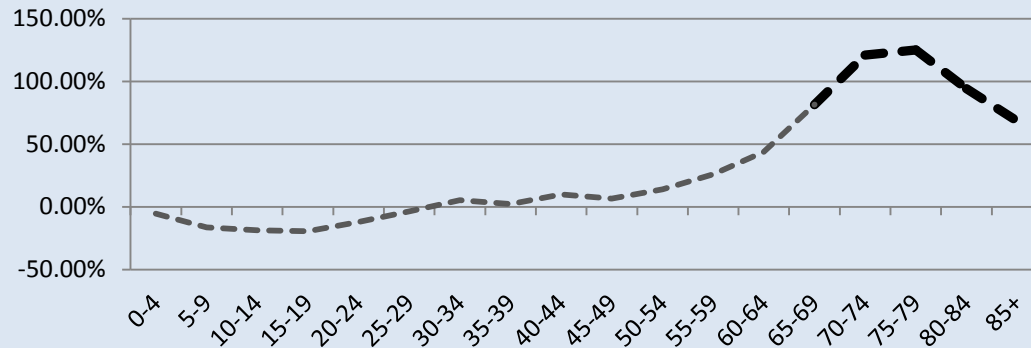
# Outreach Overview

- Over 45 meetings with Orange County Stakeholders:
  - Elected officials
  - City managers
  - Planning/transportation professionals
  - Business leaders
  - High school and college students
  - Various advocacy groups



# Projections through 2035

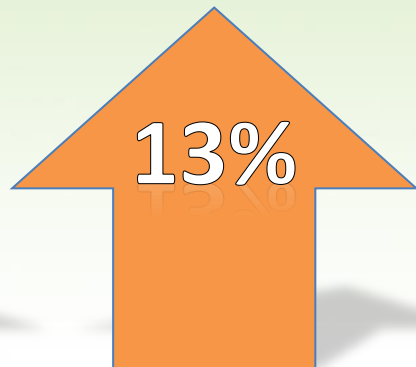
**% Change in Orange County Population by Age, 2010-2035**



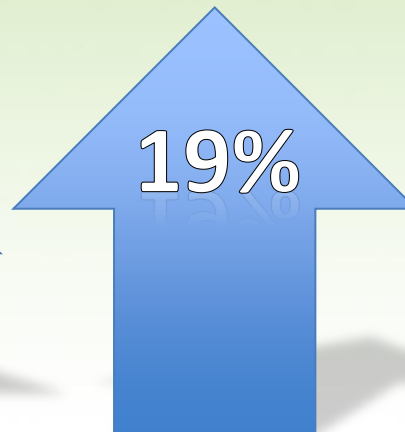
Source: OCP 2010 Modified



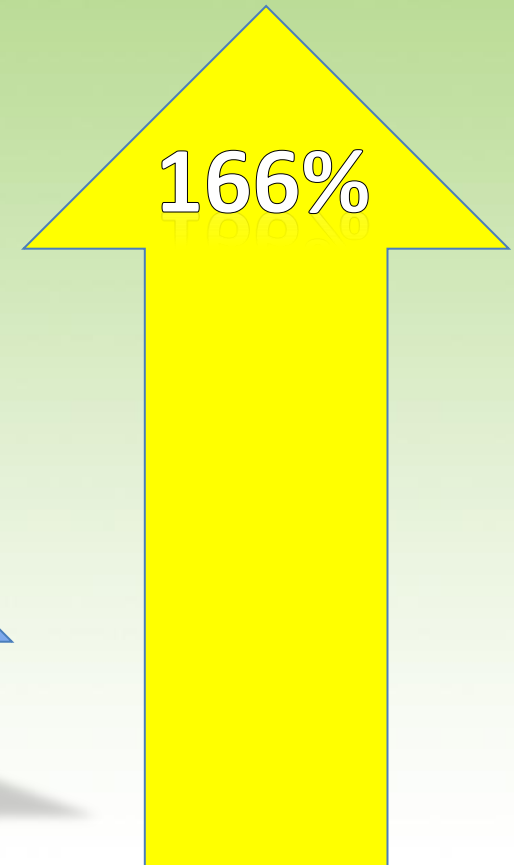
Housing



Population



Employment



Total delay due to congestion

# Elected Officials Workshops

1. Continue developing M2 solutions - as promised to the voters
2. Maximize existing networks
3. Offer mobility choices
4. Improve connections locally and regionally
5. Consider emerging technologies
6. Plan for changing demographics
7. Consider goods movement in planning
8. Educate the public about travel options

M2 – Measure M2

# Overall Stakeholder Themes

1. **Optimize** transportation systems (signal synchronization, rapid bus, and managed lanes)
2. **Maintain** streets and highways
3. **Educate** the public about transportation alternatives, bicycle safety, and managed lane strategies
4. **Innovate** new transit strategies, especially rail, and provide real-time information
5. **Collaborate** on regional solutions, and work with local jurisdictions to link land use and transportation plans
6. **Explore** incentives for carpools on toll roads, expansion of bus service and the vanpool program, dedicated lanes for transit on streets and freeways, and potential for managed lanes

# 2035 Scenarios

- **Baseline**
  - Existing transportation system
  - Fully funded Federal Transportation Improvement Plan projects
- **Preferred**
  - Baseline projects
  - M2
  - Financially constrained discretionary projects
- **Conceptual**
  - Baseline and preferred projects
  - Financially unconstrained projects
    - Benefit the goals and objectives
    - Require additional revenues and/or study



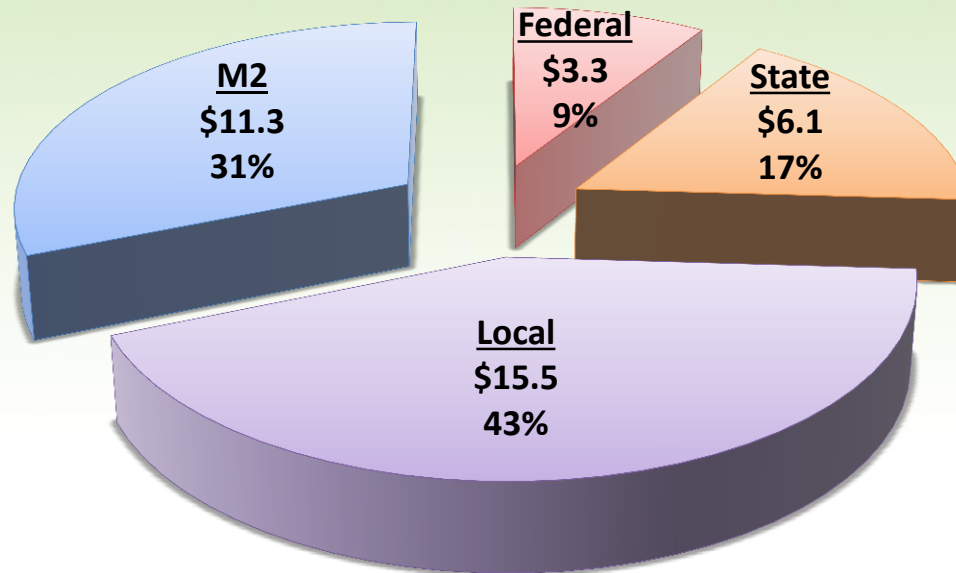
# Preferred Scenario

## Project Selection Factors

- Stakeholder Input
- Project Readiness
- Goals and Objectives
- Revenue Forecast

### Draft 2014 LRTP – Fiscal Year 2015-35 Revenue Forecast (Billions)

Total Revenues = \$36.1 Billion



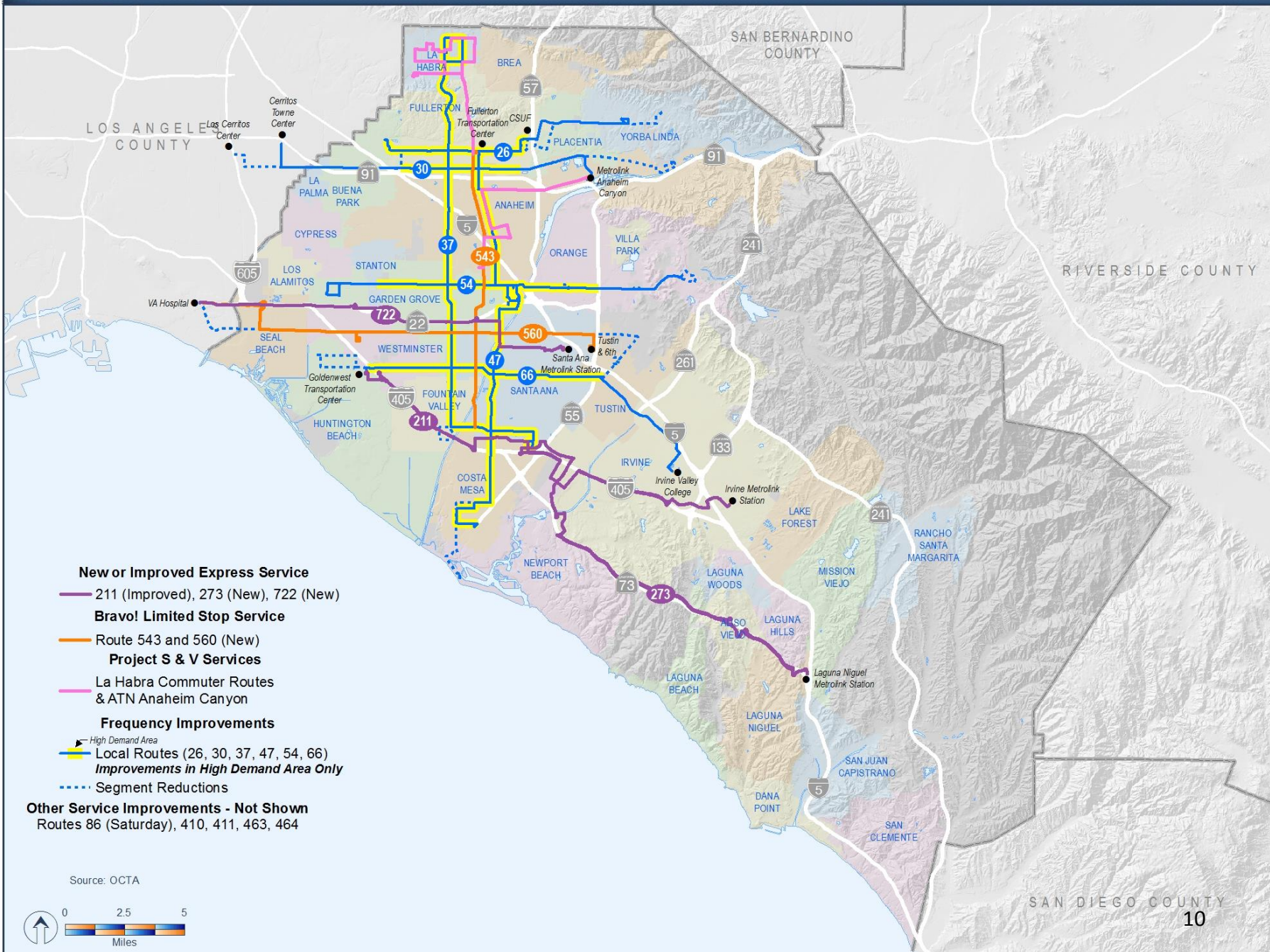


# Draft Preferred Scenario

- Proposed additions over 2010 Base Year:
  - New bus and streetcar service on high-demand corridors
  - Enhanced bus routes to maintain on-time performance
  - 20 new weekday Metrolink trains
  - 650 miles of bikeways
  - 820 lane miles on the Master Plan of Arterial Highways
  - 206 freeway/carpool lane miles
  - 236 tollway lane miles
  - 450 vanpools and station vans



# 2035 Bus Service Improvements



**New or Improved Express Service**

— 211 (Improved), 273 (New), 722 (New)

**Bravo! Limited Stop Service**

— Route 543 and 560 (New)

**Project S & V Services**

— La Habra Commuter Routes  
& ATN Anaheim Canyon

**Frequency Improvements**

— High Demand Area  
— Local Routes (26, 30, 37, 47, 54, 66)  
— Improvements in High Demand Area Only

— Segment Reductions

**Other Service Improvements - Not Shown**

Routes 86 (Saturday), 410, 411, 463, 464

Source: OCTA





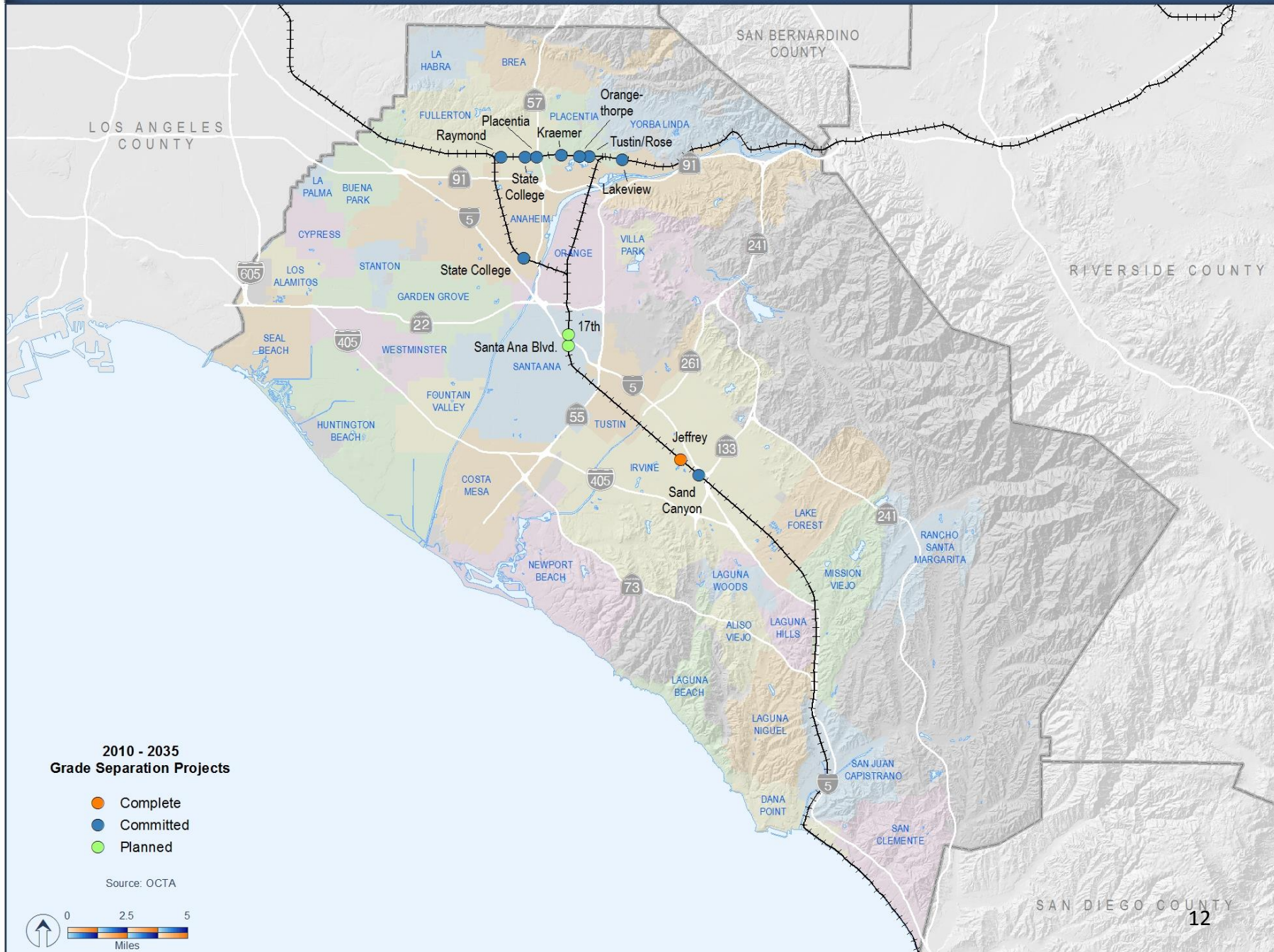
# 2035 Metrolink Service Expansion and Fixed Guideways



LOSSAN – Los Angeles-San Diego-San Luis Obispo Rail Corridor



# 2010 - 2035 Grade Separation Projects



## 2010 - 2035 Grade Separation Projects

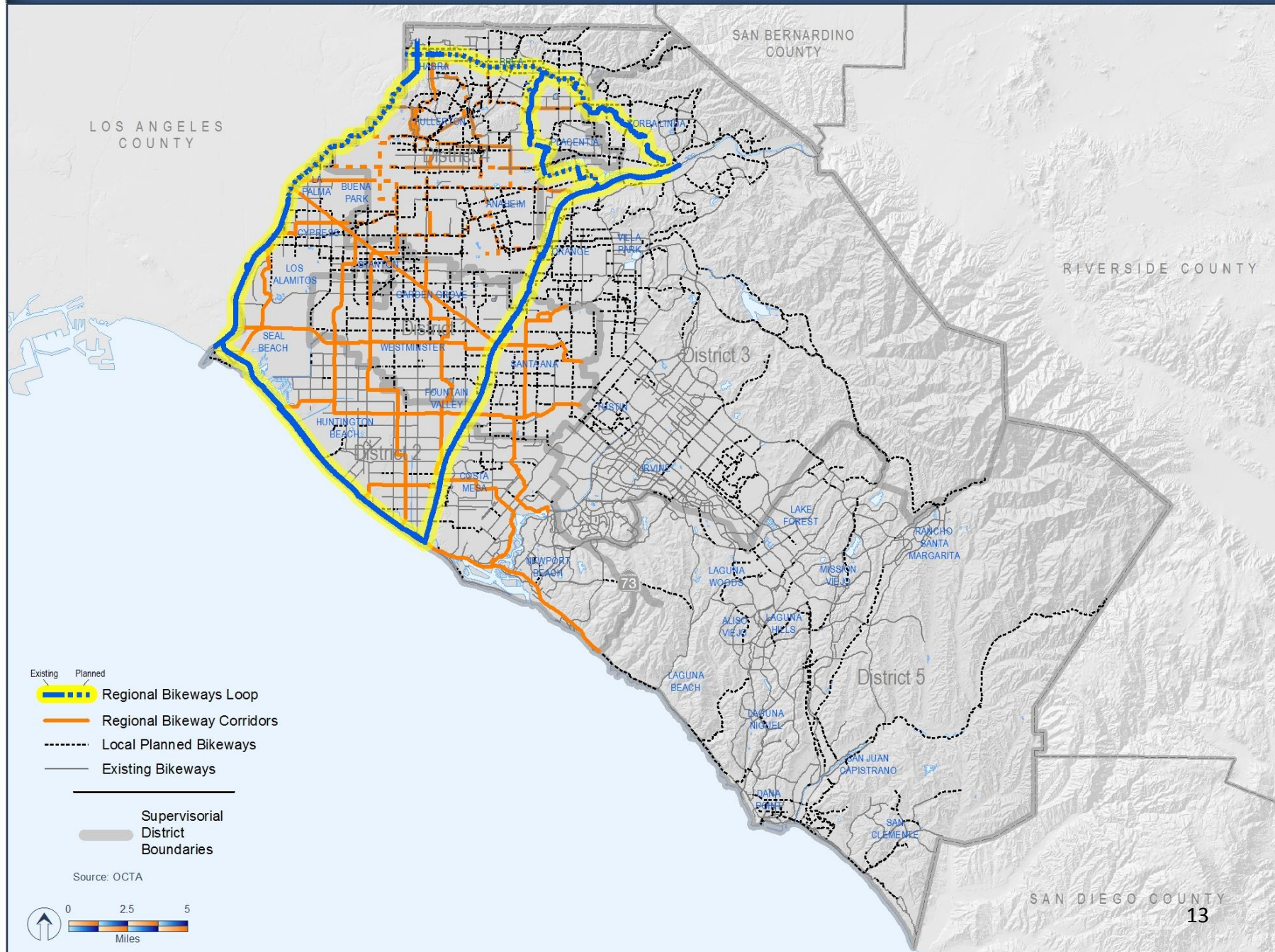
- Complete
- Committed
- Planned

Source: OCTA



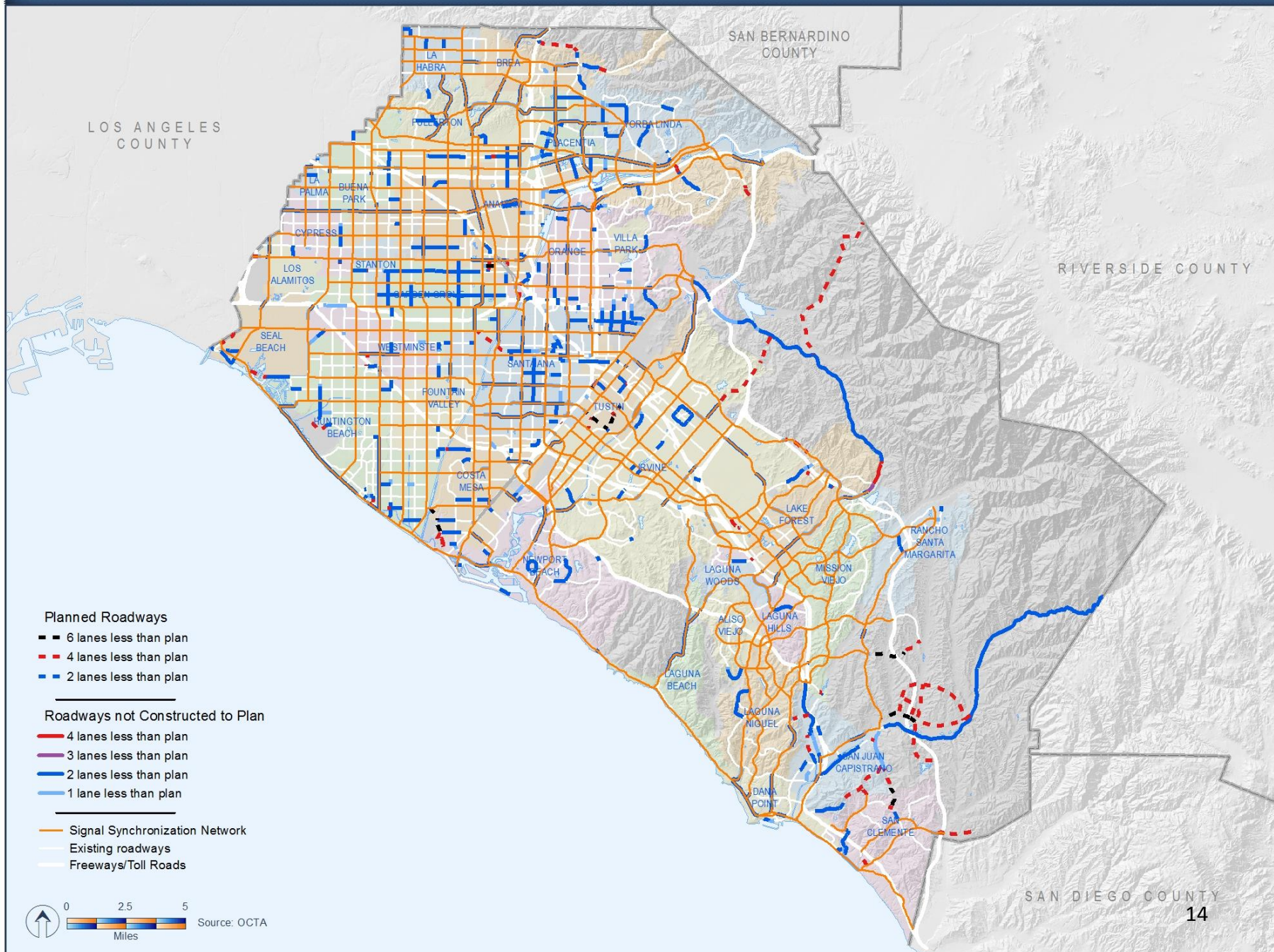


# 2035 Planned Regional Bikeways Corridors



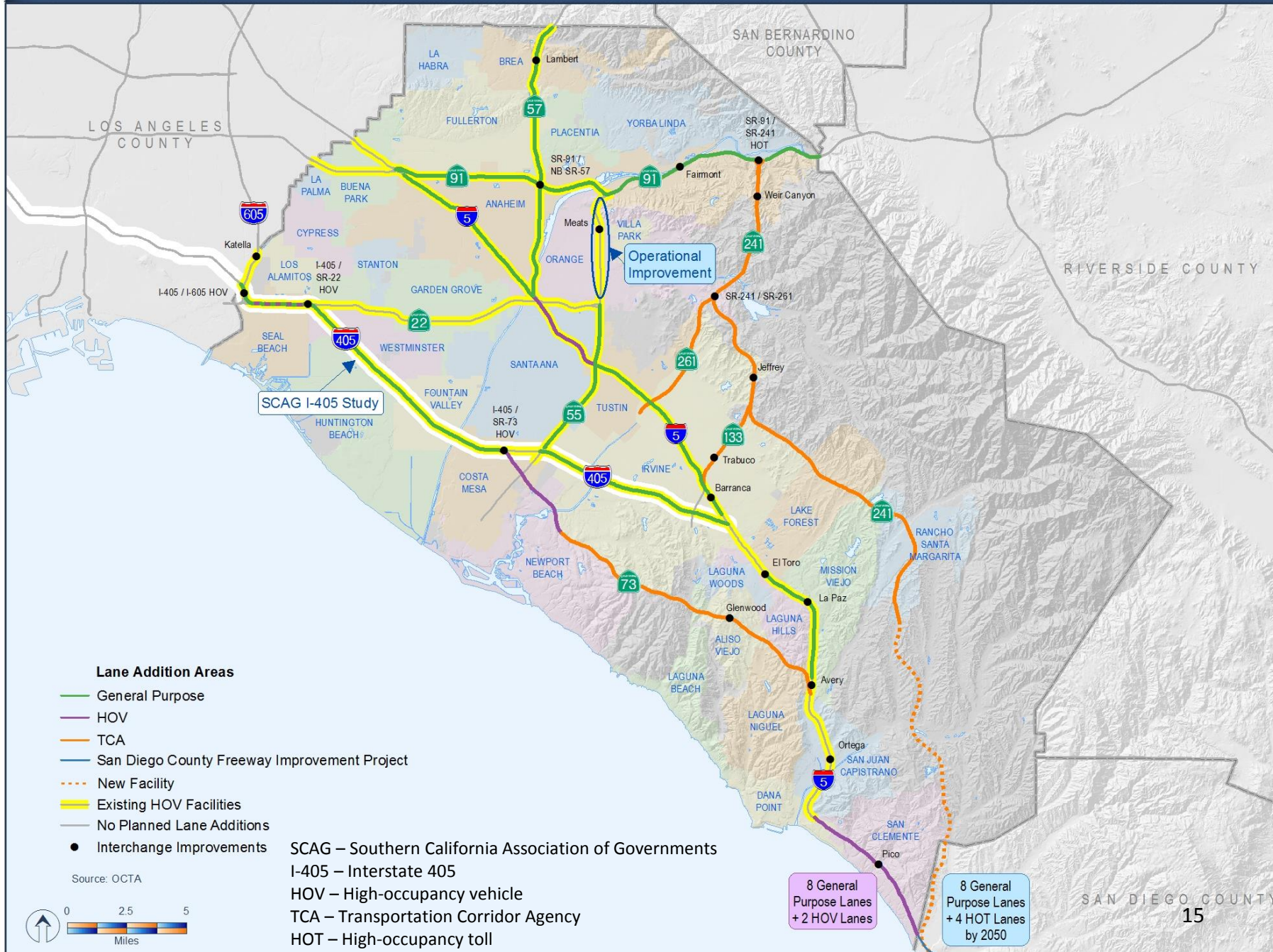


# Future Roadway Projects by 2035





# 2035 Preferred Scenario Freeway, HOV, and Tollway Lane Addition Areas



### Lane Addition Areas

- General Purpose
- HOV
- TCA
- San Diego County Freeway Improvement Project
- New Facility
- Existing HOV Facilities
- No Planned Lane Additions
- Interchange Improvements

Source: OCTA



SCAG – Southern California Association of Governments  
 I-405 – Interstate 405  
 HOV – High-occupancy vehicle  
 TCA – Transportation Corridor Agency  
 HOT – High-occupancy toll

8 General Purpose Lanes + 2 HOV Lanes

8 General Purpose Lanes + 4 HOT Lanes by 2050

# Systems Integration

- Efficiencies can be gained through integrated transportation systems
  - Shared infrastructure
  - Connectivity between modes
  - Access to key destinations
  - Improved travel times





# Draft Preferred Scenario

## Draft 2035 Preferred Scenario - Initial Model Results

	2010 Base Year	2035 Baseline	Draft 2035 Preferred	Percent Change from 2035 Baseline	
Daily Transit Trips	133,469	165,219	189,426	14.7% Increase	●
Total Vehicle Hours of Delay	274,646	729,432	506,142	30.6% Decrease	●
Daily Vehicle Miles Traveled	63,404,082	81,112,113	81,750,024	0.8% Increase	●
Average Speed – Freeway GP Peak	40.4	34.5	39.0	13.2% Increase	●
Average Speed – HOV Peak	48.4	57.4	59.5	3.6% Increase	●
Average Speed – Arterial Peak	30.3	22.7	27.2	20.0% Increase	●

GP – general purpose lanes

Note: HOV modeled with three-plus occupancy requirement in 2035.

Source: Orange County Transportation Analysis Model 3.4.1

- = desirable outcome
- = needs improvement
- = unacceptable outcome

# Beyond the Preferred Scenario

- Projects requiring additional funding and/or study:
  - Guideway connector and extensions
  - Nine new rapid bus routes in high-demand areas
  - 36 new weekday Metrolink trains
  - Six LOSSAN grade separations
  - Operational freeway/carpool improvements
- 2016 RTP/SCS regional strategies
- Four-Year Action Plan



# 2014 LRTP Four-Year Action Plan

- Collaborate on inter-county connectivity
  - LOSSAN/Green Line connection
  - Gold Line Eastern Extension – Phase 2
  - I-405 Corridor Master Plan
  - San Diego's Interstate 5 HOT Lane Project
  - 91 Express Lanes extension into Riverside County
- Study intra-county opportunities
  - Regional active transportation planning
  - Guideway projects expansion
  - Sustainable transportation strategies
  - Toll Roads (TCAs) coordination
- Enhance transportation outreach and education
  - Active transportation safety
  - Transit use and trip planning
- Monitor emerging issues
  - State/federal funding opportunities
  - 2016 RTP/SCS
  - Technology advancements
    - Autonomous vehicles
    - Alternative fuels
    - Smart phone applications

# Next Steps

- Release draft for 45-day public review
- Open House on May 7, 2014
- Final LRTP in September 2014
- Submit to SCAG by November 2014