

CHAIRMAN PATRICIA BATES' 10 STRATEGIC INITIATIVES FOR 2011



1

EMPHASIZE ENVIRONMENTAL STEWARDSHIP

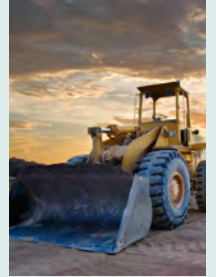
Meet M2 environmental program commitments, including habitat restoration, acquisitions and habitat conservation planning. Fund street runoff improvement projects.



2

LINK INVESTMENTS

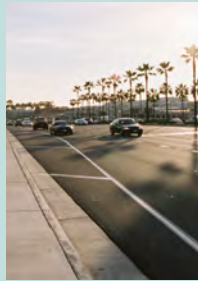
Following major investment studies, allocate resources to investments included in the consensus - developed locally preferred strategy.



3

IMPROVE STREETS AND ROADS

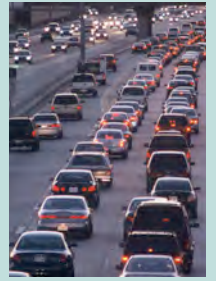
Develop a robust arterial road system with an emphasis on important Master Plan of Arterial Highways gap closures.



4

KEEP FREEWAYS MOVING

Advance the M2 freeway program to expand capacity and make operational improvements.



5

ADVANCE M2 GO LOCAL

Create guidelines for "Go Local" rubber tire transit extensions to Metrolink.



6

STRENGTHEN REGIONAL CONNECTIONS

Collaborate with partner agencies on intercounty transportation issues including managed lanes and other freeway and transit improvements.



7

ENVISION FUTURE TRANSIT

Adopt a countywide strategy for the bus and rail transit system. Include service options and guiding principles for expanding or modifying service.



8

ADVOCATE FOR PROCESS IMPROVEMENTS

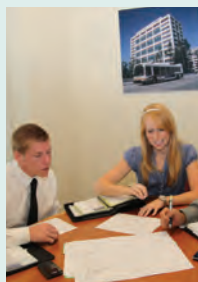
Continue building a national coalition around the "Breaking Down Barriers" concept to make federal process improvements.



9

IMPROVE ORGANIZATIONAL EFFECTIVENESS

Adopt a five-year strategic plan to focus and affirm OCTA mission while clarifying project, program and service priorities.



10

SUNSET M1

Inventory and address requirements associated with the end of Measure M1.

