



FALL 2013

- The CHP Explains Why Violation Enforcement Lights Are a Bright Idea
- Stay Safe During the 91 Project Pre-Construction
- Share the Ride, Save and Win
- October 2013 Toll Schedule



The 91 Express Lanes is owned and operated by the Orange County Transportation Authority. For more information, call (951) 278-9191 or visit www.91expresslanes.com.



CUSTOMER SERVICE CENTERS

Open Longer to Serve You Better

We have two 91 Express Lanes Customer Service Centers to serve you—one in Corona and one in Orange.



OCTA Store
550 S. Main Street
Orange, CA 92863
Hours:
Monday – Friday, 8:30 a.m. - 5:30 p.m.

Corona Customer Service Center
2275 Sampson Avenue, Suite 100
Corona, CA 92876
(951) 278-9191 | (800) 600-9191
Hours:
Monday – Friday, 9:00 a.m. - 6:00 p.m.

The CHP Explains Why Violation Enforcement Lights Are a Bright Idea

Public Information Officer Todd Kovaletz, a 7-year veteran of the California Highway Patrol (CHP) in the Santa Ana office, patrolled the 91 Express Lanes for several years. We spoke to him about the benefits of the new Violation Enforcement Lights and received advice on transponders, violations and safety.

Please explain the lights and how they work.

Mounted high above in the gantries, the lights help the CHP quickly identify vehicles traveling through the toll lanes without a transponder or with a faulty transponder. When a signal is not received, the lights flash. The new system is designed to deter unlawful motorists from entering the 91 Express Lanes. This will help keep the lanes safer and less congested.

Do the lights assist the CHP?

Yes. They streamline toll regulation by visually alerting us to transponder issues. When the lights flash, it's our initial signal that a vehicle may require our attention. With the new system, we know to look at the car in question and see if it has a transponder. If it does, we don't stop it.

How can motorists use their transponders most effectively?

Start by referring to the instructions that came with your transponder. In accordance with the California Vehicle Code, you are only allowed to mount the transponder to the lower left-hand side or right-hand side of your windshield or behind the rear

view mirror where it will not obstruct your sight while driving. Transponders need to be visible through the front windshield, which is required by law.

In addition to transponder issues, what other violations do CHP officers watch for?

Speeding is the most common violation we see. Some drivers think the name "Express Lanes" means they can drive faster than the speed limit, which is 65 miles per hour on the 91 Express Lanes. Officers also watch for drivers following too closely, not wearing seat belts, and illegally entering and exiting. We check for vehicles with missing, covered or obscured license plates to avoid FasTrak™ billing. And we're on alert for vehicles in the "3+" carpool lane with less than three people.

Do you have any advice for motorists on the 91 Express Lanes?

Obey the speed limit and always have your transponder mounted properly. Share the road and be courteous. If you have an issue like a flat tire, don't stop in the Express Lanes. They are unique; there's no place to pull to the right, so motorists should move to the left. Activate your emergency flashers and drive slowly to a safe, wide area. Stay in your car with your seat belt and flashers on. Use your cell phone to call for help.

Stay safe and enjoy your drive on the 91 Express Lanes with helpful tips from Officer Kovaletz.

Stay Safe During the 91 Project Pre-Construction



The Riverside County Transportation Commission (RCTC) and its project partners will soon begin preparing for the State Route 91 (SR-91) Corridor Improvement Project (also known as "The 91 Project") that will significantly improve an 8-mile stretch of SR-91 between Interstate 15 (I-15) and the Orange-Riverside County line. The project will extend

during off-peak travel hours. Expect temporary lane closures. Please follow signs and stay alert.

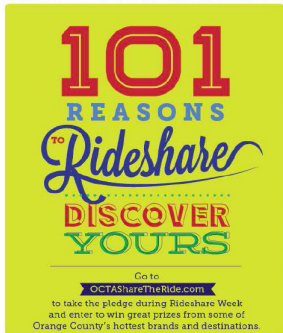
Safety is OCTA's highest priority, so please:

- Slow down and watch for workers and heavy equipment
- Allow extra time to get where you're going
- Tell friends and customers about pre-construction activity
- Take extra care when driving at night and during inclement weather
- Avoid mobile phone use or other distractions
- Watch for lane and ramp closures; use alternate routes and follow detours
- Obey the "Move Over" law. This law requires you to move to lanes away from any construction work when it is safe to do so.

the 91 Express Lanes to the I-15 and add one regular lane in both directions. Though full construction won't start till 2014, crews will be conducting land surveys and taking soil samples on SR-91 and I-15

This is a short-term inconvenience for a long-term traffic solution, so join us in looking forward to the future, and drive cautiously.

Share the Ride, Save and Win



Need some motivation to share your ride? Rideshare Week, October 7 through October 11, 2013, might be just what you need to stop riding alone and try carpooling.

Carpools are particularly rewarding on the 91 Express Lanes thanks to OCTA's "Three Ride Free" policy. A group of three or more commuters in the same car can travel for free on 91 Express Lanes HOV 3+ lane during most hours, except when traveling eastbound, Monday through Friday between the hours of 4:00 p.m. and

6:00 p.m. At these times, carpools of three or more can still save money by earning a 50 percent discount on the posted toll. You'll save on gas and time, too.

Once you've lined up two carpool friends or co-workers, congratulate yourself by entering to win some great prizes. Just go to www.ocsharetheride.com and pledge to carpool between October 7 and October 11. You'll be entered in a raffle to win sponsored prizes, including a \$100 gift certificate to Morton's The Steakhouse, a \$125 gift card to Hurley, and more.

October 2013 Toll Schedule

There were no toll adjustments for the quarter starting October 1, 2013. If you have a toll card dated July 1, 2013, you can continue to use it.

For a complete copy of the toll policy, visit the 91 Express Lanes website at www.91expresslanes.com or the OCTA website at www.octa.net. You can also reach us at the 91 Express Lanes Customer Service Center at (951) 278-9191.

91 Express Lanes Toll Schedule		Eastbound SR-55 to Riverside Co. Line						
Effective July 1, 2013		Sun	M	Tu	W	Th	F	Sat
Midnight		\$1.40	\$1.40	\$1.40	\$1.40	\$1.40	\$1.40	\$1.40
1:00 am		\$1.40	\$1.40	\$1.40	\$1.40	\$1.40	\$1.40	\$1.40
2:00 am		\$1.40	\$1.40	\$1.40	\$1.40	\$1.40	\$1.40	\$1.40
3:00 am		\$1.40	\$1.40	\$1.40	\$1.40	\$1.40	\$1.40	\$1.40
4:00 am		\$1.40	\$1.40	\$1.40	\$1.40	\$1.40	\$1.40	\$1.40
5:00 am		\$1.40	\$1.40	\$1.40	\$1.40	\$1.40	\$1.40	\$1.40
6:00 am		\$1.40	\$2.20	\$2.20	\$2.20	\$2.20	\$2.20	\$1.40
7:00 am		\$1.40	\$2.20	\$2.20	\$2.20	\$2.20	\$2.20	\$1.40
8:00 am		\$1.75	\$2.20	\$2.20	\$2.20	\$2.20	\$2.20	\$2.20
9:00 am		\$1.75	\$2.20	\$2.20	\$2.20	\$2.20	\$2.20	\$2.20
10:00 am		\$2.75	\$2.20	\$2.20	\$2.20	\$2.20	\$2.20	\$2.75
11:00 am		\$2.75	\$2.20	\$2.20	\$2.20	\$2.20	\$2.20	\$2.75
Noon		\$3.25	\$2.20	\$2.20	\$2.20	\$2.20	\$3.35	\$3.25
1:00 pm		\$3.25	\$3.10	\$3.10	\$3.10	\$3.35	\$5.25	\$3.25
2:00 pm		\$3.25	\$4.40	\$4.40	\$4.40	\$4.55	\$3.10	\$3.25
3:00 pm		\$2.75	\$4.75	\$3.70	\$3.95	\$4.45	\$9.55	\$3.25
4:00 pm		\$2.75	\$4.55	\$5.80	\$7.00	\$9.20	\$9.35	\$3.25
5:00 pm		\$2.75	\$4.85	\$5.25	\$6.50	\$8.55	\$6.00	\$3.25
6:00 pm		\$2.75	\$4.75	\$3.60	\$3.60	\$4.40	\$5.65	\$2.75
7:00 pm		\$2.75	\$3.35	\$3.35	\$3.35	\$4.85	\$5.30	\$2.20
8:00 pm		\$2.75	\$2.20	\$2.20	\$2.20	\$3.10	\$4.85	\$2.20
9:00 pm		\$2.20	\$2.20	\$2.20	\$2.20	\$2.20	\$3.10	\$2.20
10:00 pm		\$1.40	\$1.40	\$1.40	\$1.40	\$1.40	\$2.20	\$1.40
11:00 pm		\$1.40	\$1.40	\$1.40	\$1.40	\$1.40	\$1.40	\$1.40

91 Express Lanes Toll Schedule		Westbound Riverside Co. Line to SR-55						
Effective July 1, 2013		Sun	M	Tu	W	Th	F	Sat
Midnight		\$1.40	\$1.40	\$1.40	\$1.40	\$1.40	\$1.40	\$1.40
1:00 am		\$1.40	\$1.40	\$1.40	\$1.40	\$1.40	\$1.40	\$1.40
2:00 am		\$1.40	\$1.40	\$1.40	\$1.40	\$1.40	\$1.40	\$1.40
3:00 am		\$1.40	\$1.40	\$1.40	\$1.40	\$1.40	\$1.40	\$1.40
4:00 am		\$1.40	\$2.60	\$2.60	\$2.60	\$2.60	\$2.60	\$1.40
5:00 am		\$1.40	\$4.20	\$4.20	\$4.20	\$4.20	\$4.05	\$1.40
6:00 am		\$1.40	\$4.40	\$4.40	\$4.40	\$4.40	\$4.20	\$1.40
7:00 am		\$1.40	\$4.90	\$4.90	\$4.90	\$4.90	\$4.75	\$1.85
8:00 am		\$1.85	\$4.40	\$4.40	\$4.40	\$4.40	\$4.20	\$2.20
9:00 am		\$1.85	\$3.50	\$3.50	\$3.50	\$3.50	\$3.50	\$2.75
10:00 am		\$2.75	\$2.20	\$2.20	\$2.20	\$2.20	\$2.20	\$2.75
11:00 am		\$2.75	\$2.20	\$2.20	\$2.20	\$2.20	\$2.20	\$3.15
Noon		\$2.75	\$2.20	\$2.20	\$2.20	\$2.20	\$2.20	\$3.15
1:00 pm		\$3.15	\$2.20	\$2.20	\$2.20	\$2.20	\$2.20	\$3.15
2:00 pm		\$3.15	\$2.20	\$2.20	\$2.20	\$2.20	\$2.20	\$3.15
3:00 pm		\$3.15	\$2.20	\$2.20	\$2.20	\$2.20	\$2.75	\$3.15
4:00 pm		\$3.30	\$2.20	\$2.20	\$2.20	\$2.20	\$2.75	\$3.30
5:00 pm		\$3.30	\$2.20	\$2.20	\$2.20	\$2.20	\$2.75	\$3.30
6:00 pm		\$3.30	\$2.20	\$2.20	\$2.20	\$2.20	\$3.25	\$2.75
7:00 pm		\$2.75	\$1.40	\$1.40	\$1.40	\$1.40	\$2.20	\$2.20
8:00 pm		\$2.75	\$1.40	\$1.40	\$1.40	\$1.40	\$1.40	\$1.40
9:00 pm		\$2.75	\$1.40	\$1.40	\$1.40	\$1.40	\$1.40	\$1.40
10:00 pm		\$1.40	\$1.40	\$1.40	\$1.40	\$1.40	\$1.40	\$1.40
11:00 pm		\$1.40	\$1.40	\$1.40	\$1.40	\$1.40	\$1.40	\$1.40