

# Keeping Orange County Moving



California Transportation Commission

April 25, 2012



# Welcome to Orange County

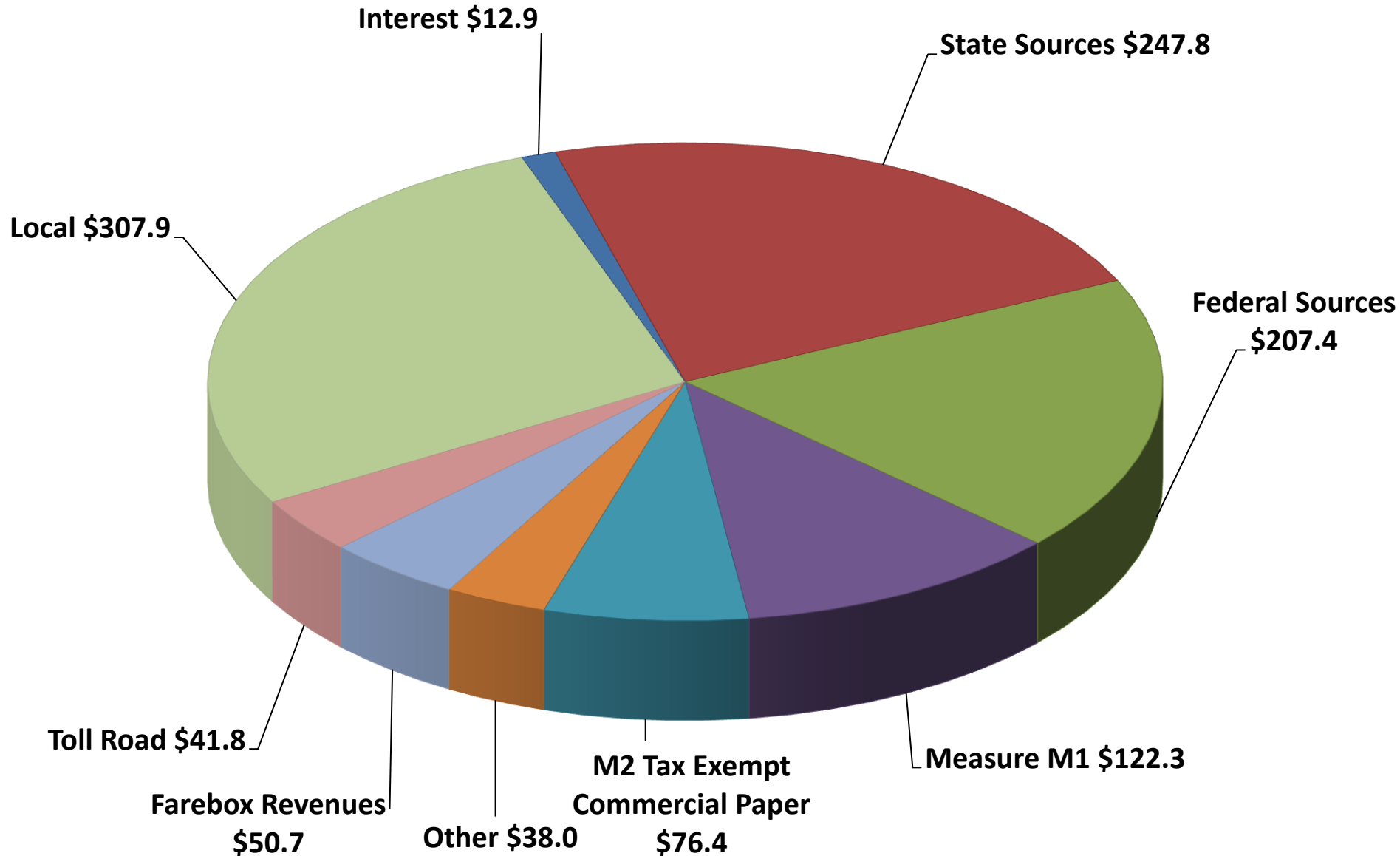


# OCTA

- Regional Transportation Planning Agency
- Measure M – local sales tax
- Freeway improvements
- 91 Express Lanes
- Countywide bus service
- Metrolink commuter rail service
- Local streets and roads
- Environmental mitigation programs

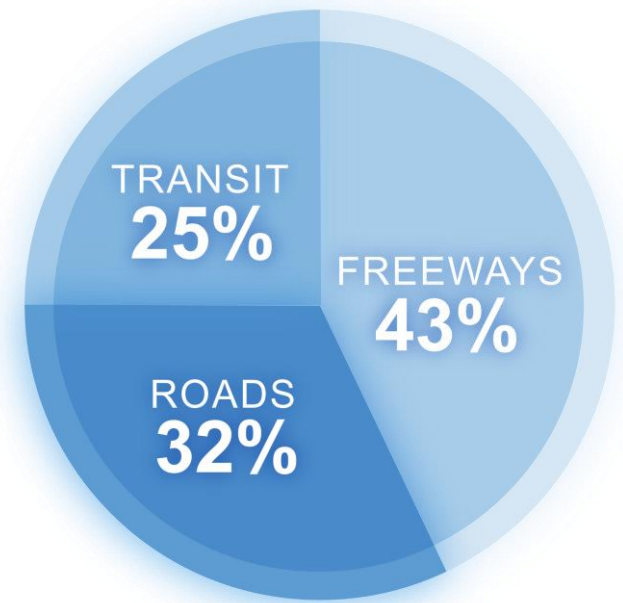


# Total Annual Funding Sources (in millions)



# Renewed Measure M (M2)

- Successful implementation of M1 completed in 2011
- Renewed by voters in 2006 – began collection April 2012
- 30-year, \$15 billion program
  - Freeways, Roads, Transit
  - Innovative Environmental Programs
  - Taxpayer Safeguards



# Project Delivery

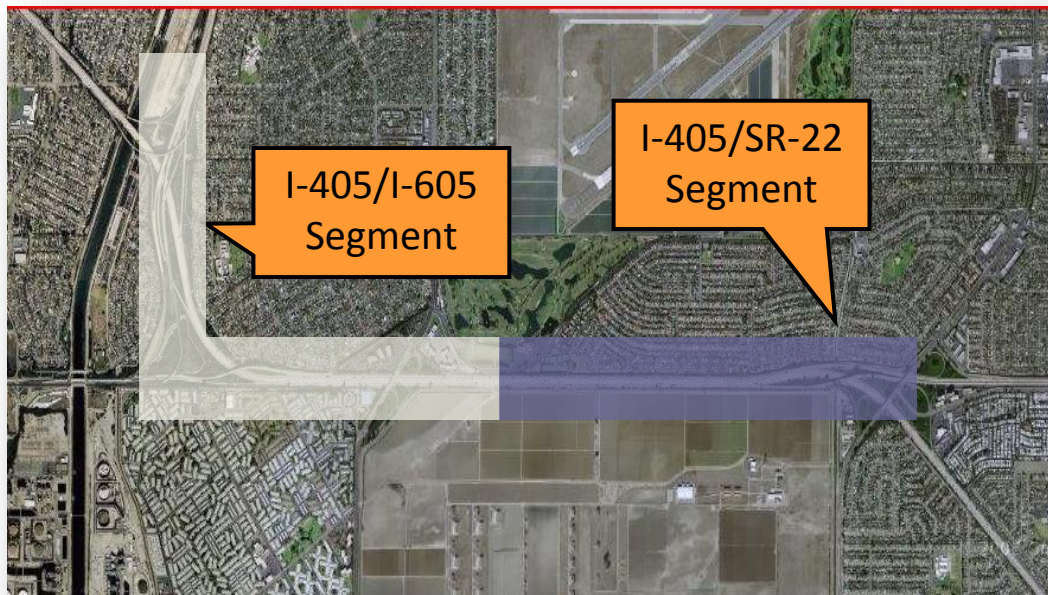
Improvement	State	Federal	Local	Total Cost
West County Connectors	151,255	138,625	8,573	298,453
SR-91	107,360		14,000	121,360
SR-57	106,302		29,694	135,996
I-5	327,531	64,470	49,422	441,423
OC Bridges	258,781	188,319	142,524	589,624

# M2 Freeway Program 2012



# West County Connectors

- Seamless carpool lane connections
  - Adds second carpool lane on I-405 between SR-22 and I-605
  - Reconstructs on- and off-ramps and various bridges
  - Constructs soundwalls/retaining walls at various locations





# SR-91 Improvements



# SR-57 Improvements



# I-5 Improvement Projects



# I-405 Improvement Project

## Existing conditions



Rendering of I-405 looking northwest at Springdale St. overcrossing

# Alternative 1



Adds one general purpose lane in each direction

# Alternative 2



Adds 2 general purpose lanes in each direction

# Alternative 3



Adds an express lane facility and one general purpose lane in each direction

# Innovative Solutions – 91 Express Lanes

- Built by a private company, OCTA purchased in 2003
- Purchase removed non-compete clause
- Congestion pricing model

## Fast Facts

- Ridership increased 27%
- Revenue increased 34%
- HOV3+ usage increased 8%





# Countywide Bus Service



# Metrolink Commuter Rail



- 3 Metrolink Lines OC, IEOC, 91
- 48 trains serve nearly 4 million riders
- Metrolink Service Expansion Program – add trains, track capacity, station improvements, connecting transit services



# Trade Corridor Improvement Fund Bridge Projects



Lead Agency: City of Fullerton
 



 Lead Agency: Orange County Transportation Authority

# Local streets and roads

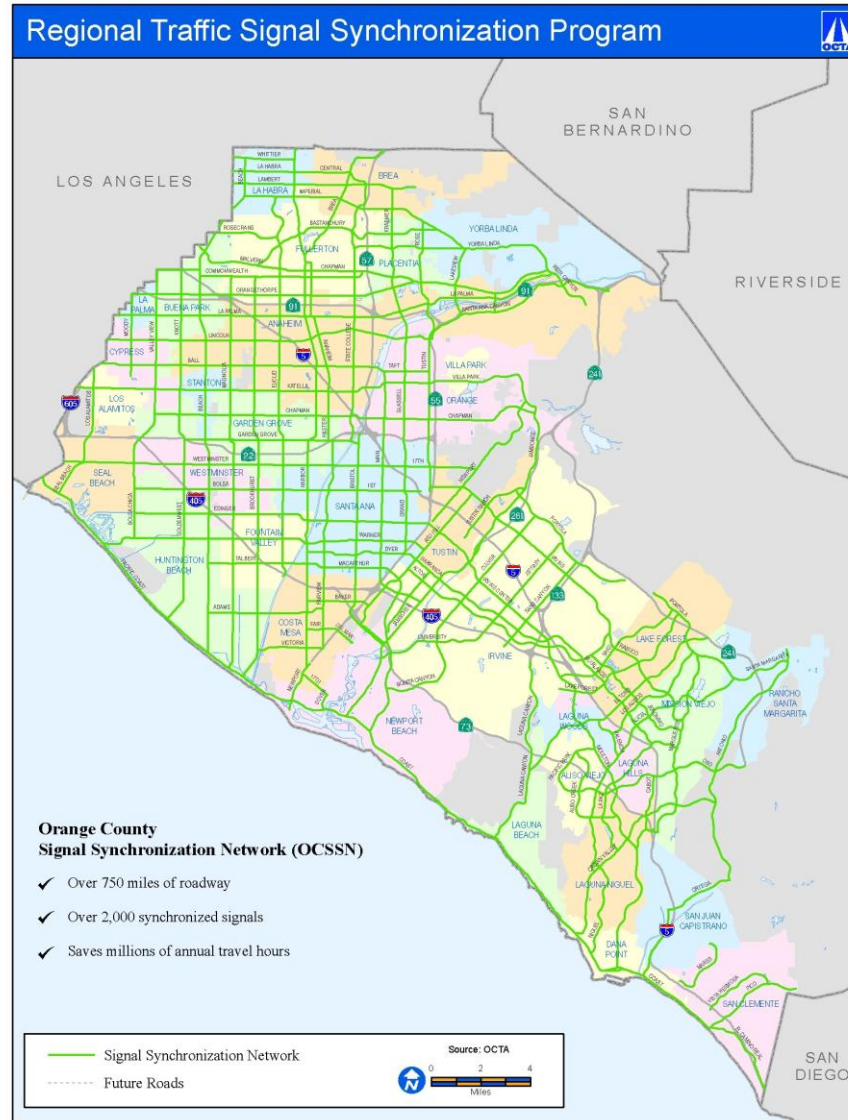
- Fair Share Element: 18%
- Regional Capacity: 10%
  - Street widening
  - Intersections
  - Interchanges
- Signal Sync: 4%

---

- Total of M2= 32%



# Signal Synchronization



# Freeway Environmental Mitigation Program

- Innovative program mitigates impacts of freeway improvements
- Purchase of \$42 million of acquisition projects in progress
- \$5.5 million in restoration projects funded ; another \$5 million approved

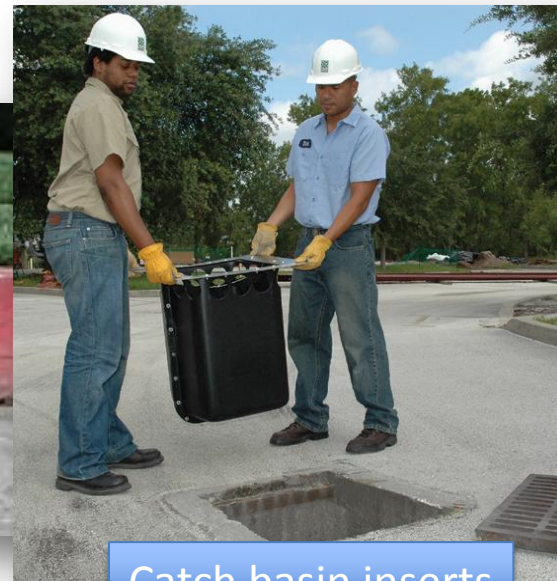


# Water Quality Program

- Implement road and highway water quality improvement projects
- Two-tier grant program



Stormwater screens



Catch basin inserts

# Keeping Orange County Moving



California Transportation Commission

April 25, 2012

