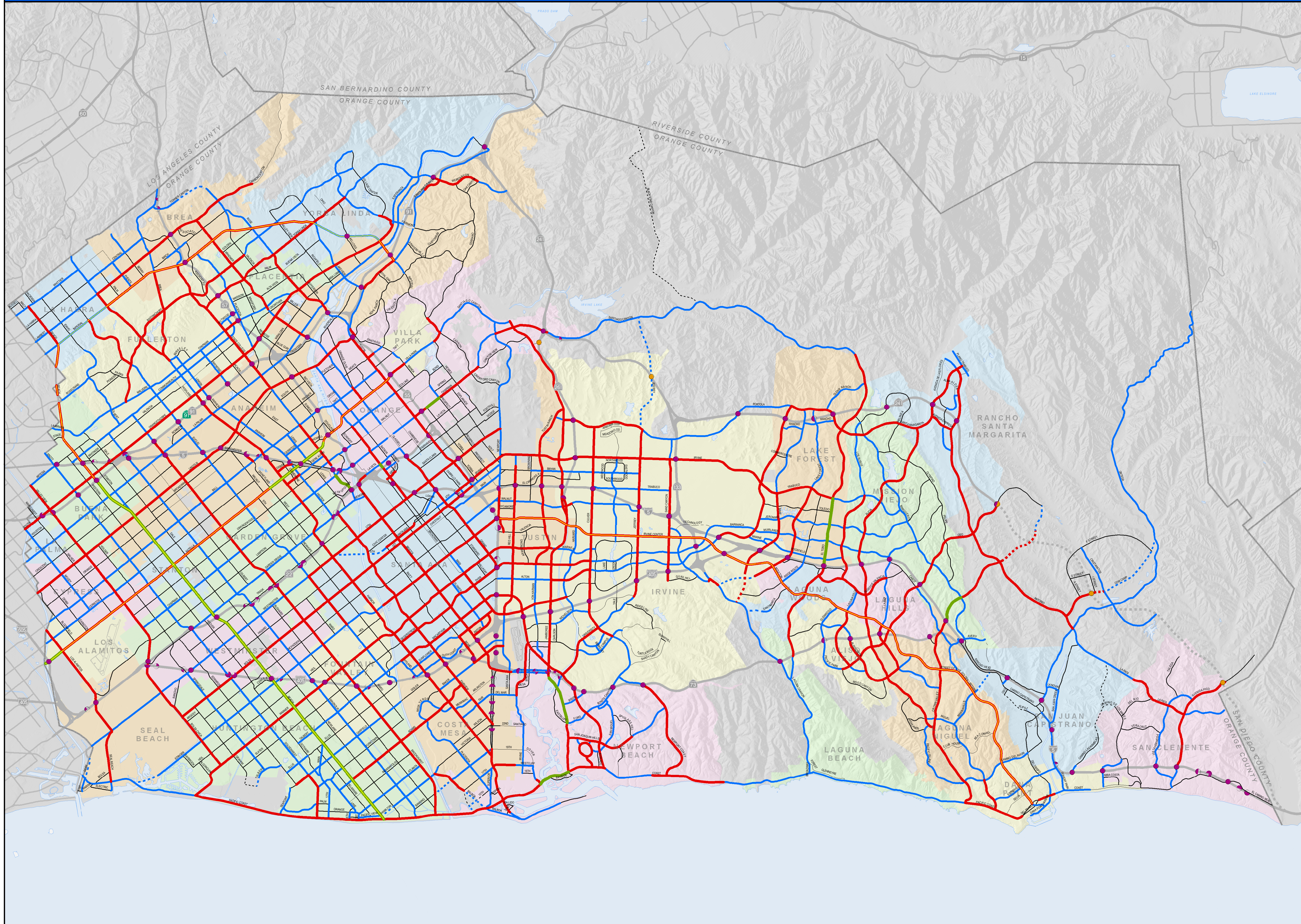


# 2012 Master Plan of Arterial Highways



## LEGEND

- ARTERIAL HIGHWAYS**
- ESTABLISHED ALIGNMENT (solid line)
  - PROPOSED ALIGNMENT (dashed line)
  - PRINCIPAL (red line)
  - MAJOR (orange line)
  - PRIMARY (blue line)
  - SECONDARY (light blue line)
  - COLLECTOR (grey line)
- 
- ROADS OUTSIDE OF OC SHOWN FOR CONTINUITY (thin grey line)
  - FREEWAY \* (thick grey line)
  - TRANSPORTATION CORRIDOR \* (dotted grey line)
- 
- SMART STREET 8 LANE (thick green line)
  - SMART STREET 6 LANE (thick orange line)
  - SMART STREET 4 LANE (thick blue line)
- 
- EXISTING INTERCHANGE (purple dot)
  - PROPOSED INTERCHANGE (yellow dot)
- 
- RIGHT-OF-WAY RESERVE (thin grey line)

\* Shown for references purposes only

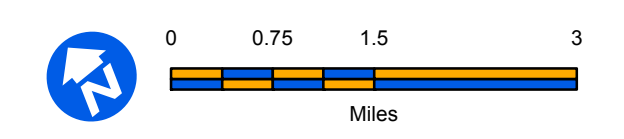
- CLASSIFICATION**
- PRINCIPAL**  
8 Lane Divided Roadway  
Accommodates 45,000 to 60,000 ADT
  - MAJOR**  
6 Lane Divided Roadway  
Accommodates 30,000 to 45,000 ADT
  - PRIMARY**  
4 Lane Divided Roadway  
Accommodates 20,000 to 30,000 ADT
  - SECONDARY**  
4 Lane Undivided Roadway  
Accommodates 10,000 to 20,000 ADT
  - COLLECTOR**  
2 Lane Undivided Roadway  
Accommodates 7,500 to 10,000 ADT

Map Published June 4, 2012



CITY BOUNDARY UPDATE:  
June 2010

Source: OCTA



Portions of this map copyrighted by Thomas Bros. Maps and reproduced with permission.