



# BUS RAPID TRANSIT ON FREEWAYS STUDY

## *OVERVIEW PRESENTATION*

# Speaker



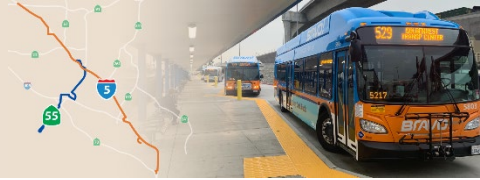
## Eric Carlson

*Transportation Planner*



# Agenda

- Overview
- Study Process and Schedule
- Components of Freeway BRT
- Conceptual Routes and Stop Locations
- Existing and Proposed Infrastructure
- Next Steps / Stay Involved



**ESTUDIO CONCEPTUAL DE OCTA SOBRE TRANSPORTE PÚBLICO RÁPIDO A TRAVÉS DE AUTOBUSES EN AUTOPISTAS**

**BREVE RESUMEN DEL GENTE DEL PROYECTO:**  
 Eric Carlson  
 (714) 960-5381  
[eric@octa.net](mailto:eric@octa.net)

**DESCRIPCIÓN**  
 La Autoridad de Transporte del Condado de Orange (OCTA, por sus siglas en inglés), en asociación con el Distrito 12 del Departamento de Transporte del Estado de California (Caltrans, por sus siglas en inglés), está estudiando el desarrollo de dos rutas de Transporte de Autobuses en autopistas (BRT, por sus siglas en inglés) en la región de la Ruta Estatal 55 (SR-55, en inglés). El estudio conceptual giró a través de Autobuses en autopistas identificó mejoras en la infraestructura y transporte para posibles rutas de Transporte Público (BRT) e identificó paradas a lo largo de cada corredor. La ruta 15.20 millas desde la estación Laguna Niguel/Mission Viejo hasta el

**OCTA FREEWAY BUS RAPID TRANSIT CONCEPT STUDY**

**AT A GLANCE**  
**PROJECT MANAGER:**  
 Eric Carlson  
 (714) 960-5381  
[eric@octa.net](mailto:eric@octa.net)  
**COMMUNITY OUTREACH:**  
 Melissa Espino  
 Community Relations Officer  
 (714) 960-5607  
[mespino@octa.net](mailto:mespino@octa.net)  
**WEBSITE:**  
[octa.net/freewaybrrt](http://octa.net/freewaybrrt)

**OVERVIEW**  
 The Orange County Transportation Authority (OCTA), in partnership with the State of California Department of Transportation (Caltrans) District 12, is studying the development of two Freeway Bus Rapid Transit (BRT) routes on Interstate 5 (I-5) and State Route 55 (SR-55). The Freeway Bus Rapid Transit Concept Study will identify improvements to infrastructure and transportation solutions for potential Bus Rapid Transit (BRT) routes and identify stops along each corridor. The I-5 route is approximately 30 miles from the Laguna Niguel/Mission Viejo Station to the Fullerton Park and Ride, while the south-south route is 12 miles along the SR-55 from the Santa Ana Regional Transit Center to Long Memorial Hospital Presbyterian in Newport Beach.

The study will build upon prior studies conducted by Caltrans and the Southern California Association of Governments (SCAG) and will develop solutions which can benefit transit, high-occupancy vehicles, and toll users.

**BACKGROUND**  
 The OC Transit Vision (Transit Master Plan) was completed in 2018, establishing a 20-year plan for the future of Orange County's public transit system. The Transit Master Plan identified the I-5 and SR-55 as high-priority corridors, which became the focus of the OCTA Freeway BRT Concept Study. This study will develop alternatives for the Freeway BRT corridors including identification of operating lanes, station locations, access ramps, and needed parking facilities. The alternatives will use existing and planned high occupancy vehicle (HOV) lanes.

**SCHEDULE**  
 The study will conclude in 2021 and will include public stakeholder engagement beginning in Fall 2020.

MILESTONES	APPROXIMATE TIMELINE
Purpose & Need Assessment	Spring 2020
Alternatives Development	Summer - Fall 2020
Stakeholder Engagement	Summer - Fall 2020
Public Meetings	Fall 2020
Final Study Results	Early 2021

**STAY IN TOUCH**  
 Stay informed by signing up today to receive study news updates at [octa.net/freewaybrrt](http://octa.net/freewaybrrt).

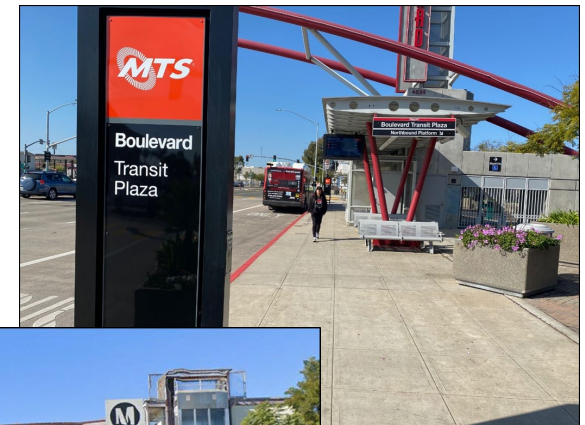
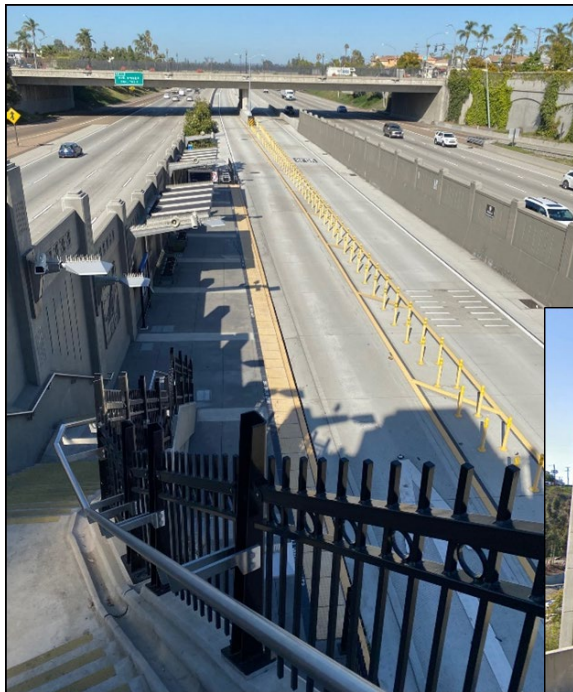
**Bus Rapid Transit Concept Study**

# What is Freeway BRT?



Express bus service that travels mostly on the freeways, taking advantage of carpool lanes, express lanes/toll lanes or even shoulder lanes to serve key destinations.

Stations can be on or near the freeway and connect to key destinations using local bus service and shuttles.





# Study Overview



- Prior Studies by OCTA, Caltrans and SCAG
- Study Area Focus
  - I-5 from Fullerton Park and Ride to Laguna Niguel/Mission Viejo Metrolink Station
  - SR-55 from Santa Ana Regional Transit Center to Hoag Hospital Newport Beach
- Benefits of Freeway BRT
- Timing of study / ongoing improvements to freeway network
- Caltrans grant funded study (2019-2022)
- Objectives
  - Develop conceptual alternatives for each corridor
  - Identify needed infrastructure for inclusion in future freeway projects



January 2018

# Study Process and Schedule



## Step 1: Purpose and Need (Mar–Jun 2020)

- Prior Studies
- Existing Conditions (demographic data)
- Needs, Goals, and Objectives

## Step 2: Alternatives Development (Jul-Oct 2020)

- Coordination with corridor cities
- Public and Stakeholder Outreach

## Step 3: Alternatives Evaluation (Nov-Feb)

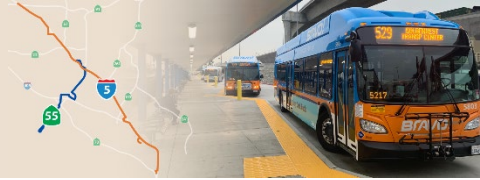
- Ridership and Cost estimates

## Step 4: Draft Final Report (Mar-Apr 2021)

- Near-term and Long-term Recommendations
- Public review and comment



# Components of Freeway BRT



## Direct Access Ramps (DARs)

- Existing DARs
- New DARs

## Station location and design

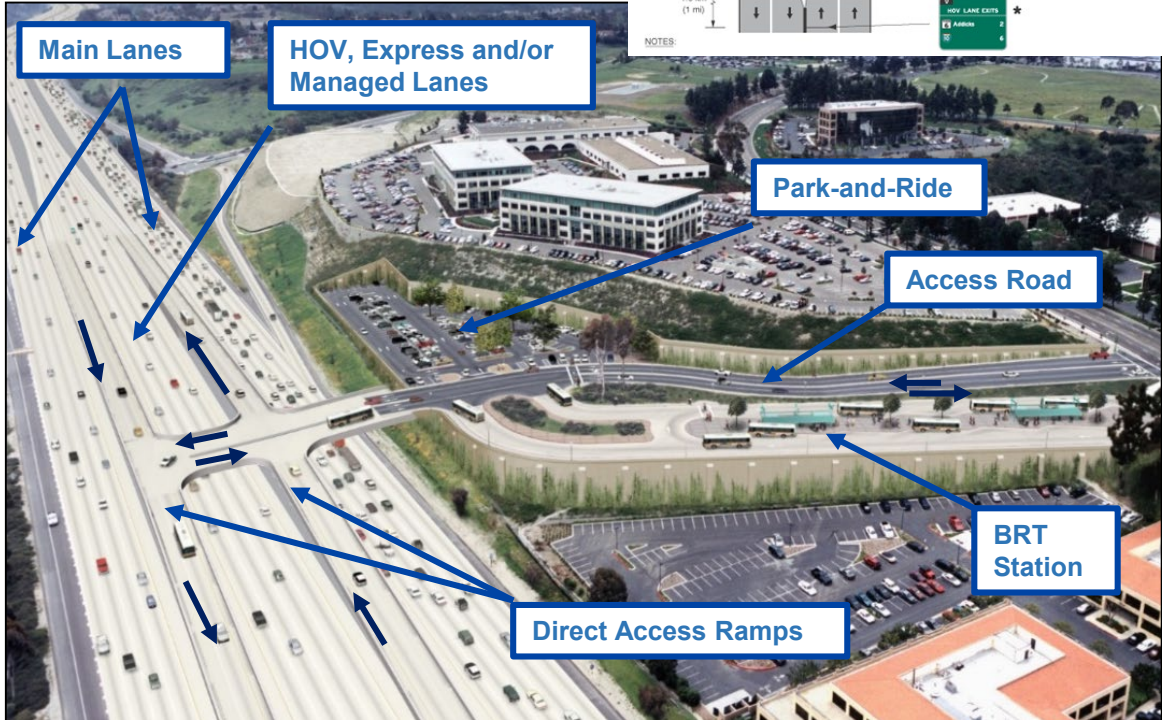
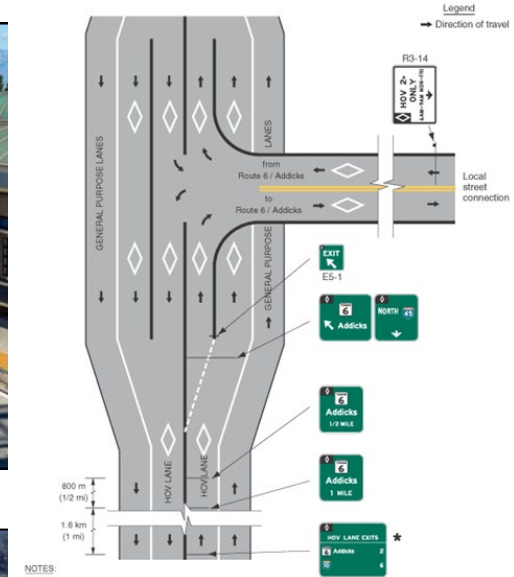
- Inline
- Offline

## Parking

- At certain locations

## Key destinations/connections

- Existing stops



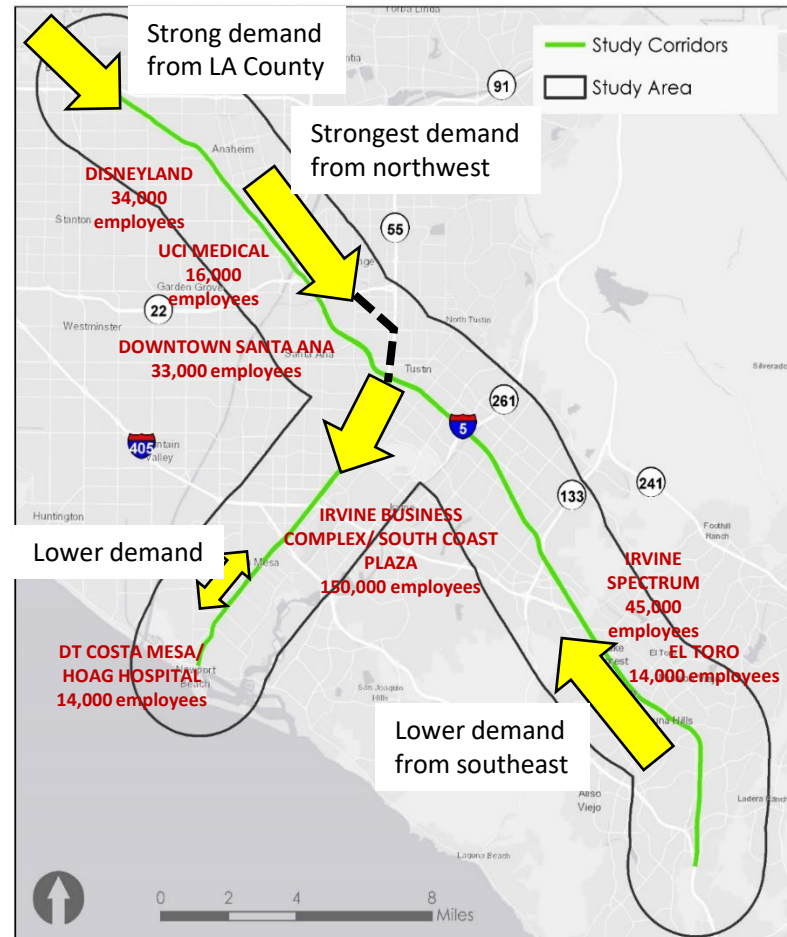


# Travel Demand



## OC BRT Freeway Corridors

Existing Conditions Study Area

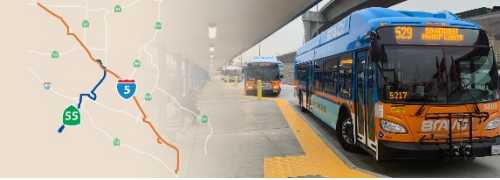


## Study Area

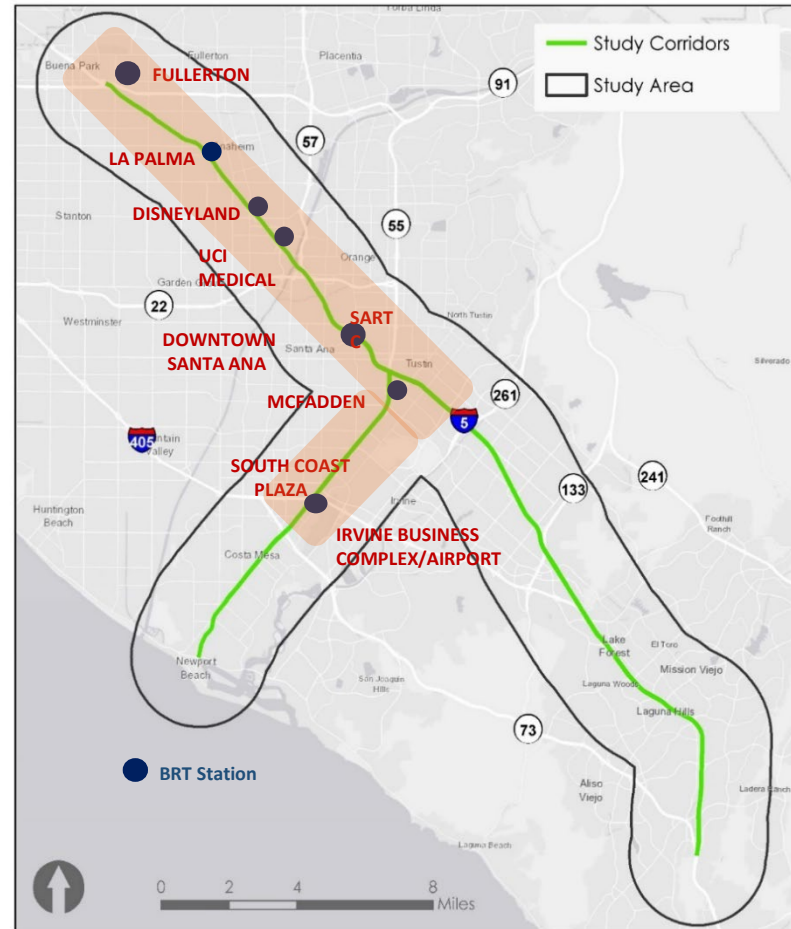
- Strong demand along I-5/SR-55 from Fullerton to Irvine
- Strongest demand matches dual HOV/express lane priorities
- Locate stations to maximize access to:
  - Key residential areas
  - Key employment areas
  - OCTA bus/streetcar connections



# Concept 1



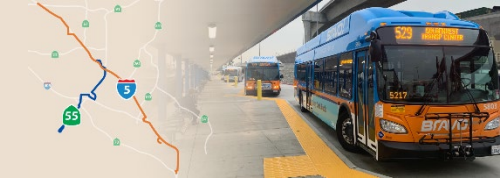
## OC BRT Freeway Corridors Existing Conditions Study Area



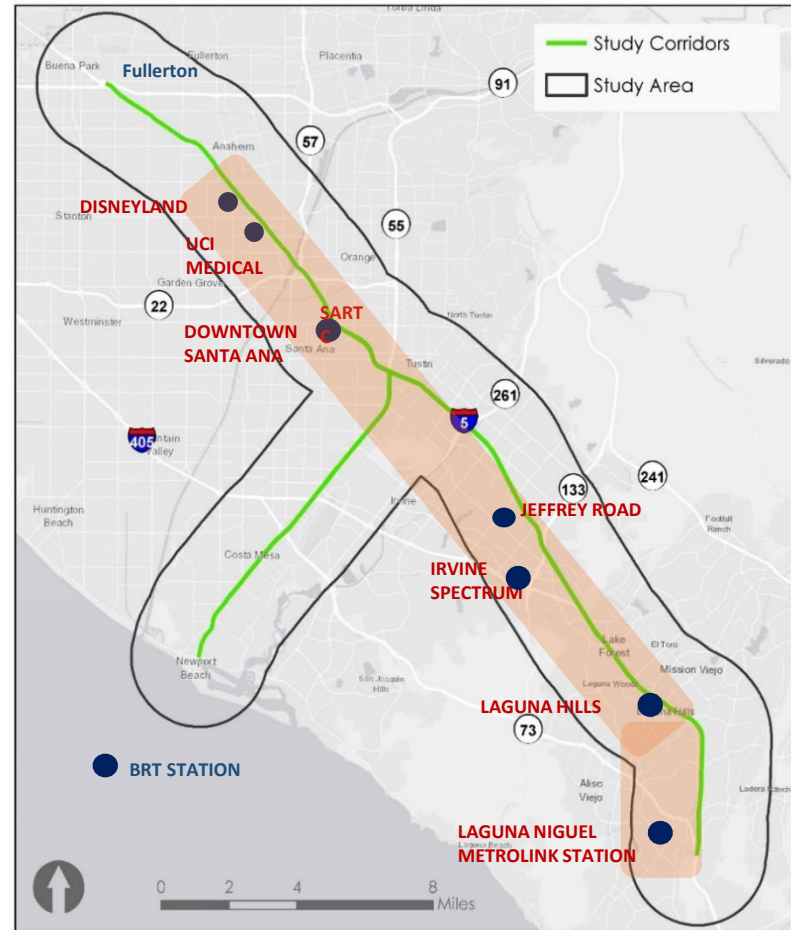
### 1. Fullerton to Irvine – All Day BRT Stations & Transit Connections:

- Fullerton: (Routes 25, 26, 30, 529, 721)
- La Palma (Route 38)
- Disneyland: (Routes 47, 50, DisneyShuttles)
- UCI Medical (Routes 47, 54, 57/57X, 83)
- SARTC: (Streetcar, Metrolink/Amtrak, Routes 59, 83, 206, 463, 560, 862)
- McFadden Avenue: (Route 66)
- Irvine Business Complex/Airport/  
South Coast Plaza—  
(BRT Circulation and/or Shuttles; Routes 55,  
57/57X, 76, 86, 463)

# Concept 2



## OC BRT Freeway Corridors Existing Conditions Study Area

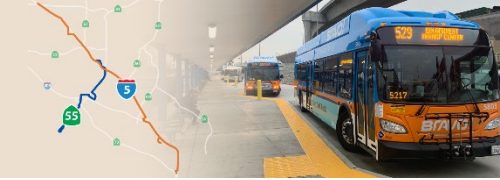


## 2. Anaheim to Laguna Niguel – All Day BRT Stations and Transit Connections:

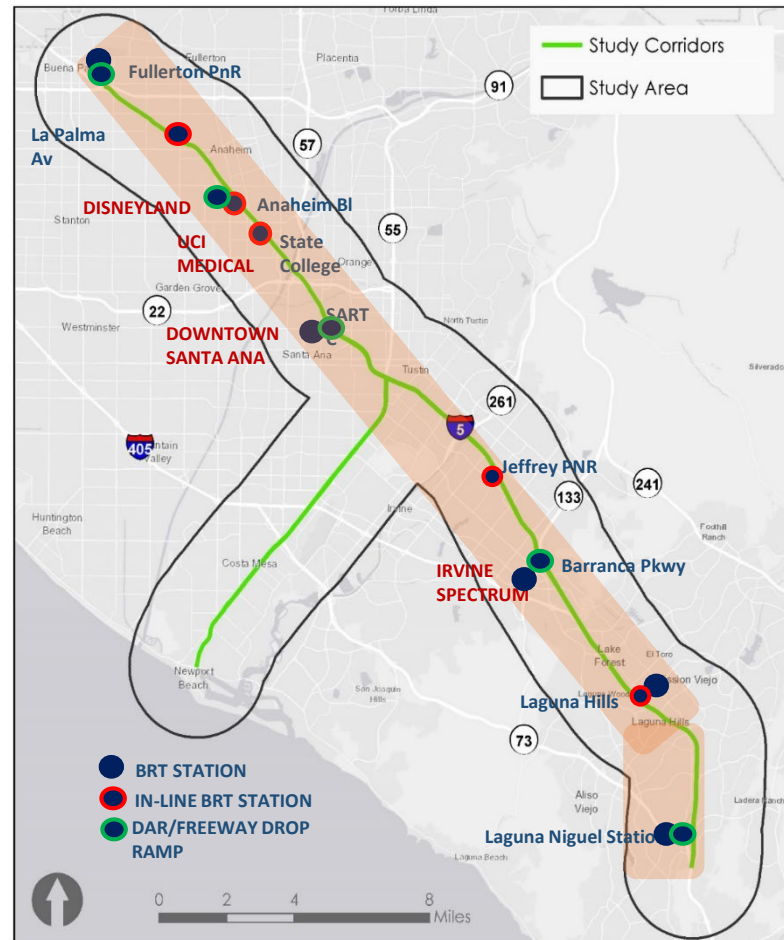
- Disneyland:  
(Routes 47, 50, Disney Shuttles)
- UCI Medical  
(Routes 47, 54, 57/57X, 83)
- SARTC:  
(Streetcar, Metrolink/Amtrak, Routes 59, 83, 206, 463, 560, 862)
- Jeffrey Road Park and Ride  
(Route 167)
- Irvine Spectrum  
(Routes 86,90)
- Laguna Hills  
(Route 91)
- Laguna Niguel Metrolink  
(Metrolink/Amtrak, Routes 85, 87, 91)



# Concept 2A



## OC BRT Freeway Corridors Existing Conditions Study Area



## 2A. Fullerton to Laguna Niguel – All Day BRT Stations and Transit Connections:

- Fullerton Park and Ride  
(Routes 25, 26, 30, 529, 721)
- Disneyland:  
(Routes 47, 50, Disney Shuttles)
- UCI Medical  
(Routes 47, 54, 57/57X, 83)
- SARTC:  
(Streetcar, Metrolink/Amtrak, Routes 59, 83, 206, 463, 560, 862)
- Jeffrey Road Park and Ride  
(Route 167)
- Irvine Spectrum  
(Routes 86, 90)
- Laguna Hills  
(Route 91)
- Laguna Niguel Metrolink  
(Metrolink/Amtrak, Routes 85, 87, 91)

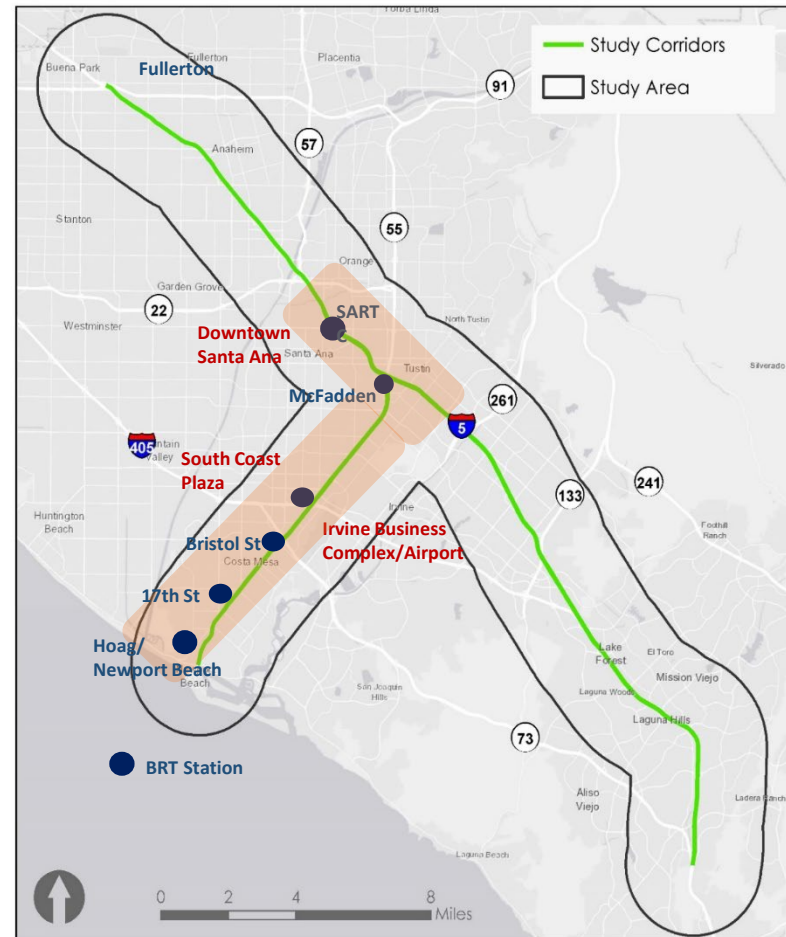




# Concept 3



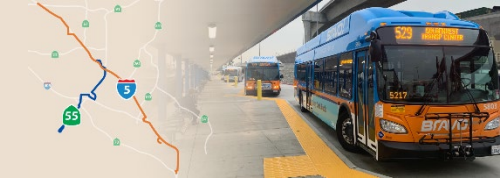
## OC BRT Freeway Corridors Existing Conditions Study Area



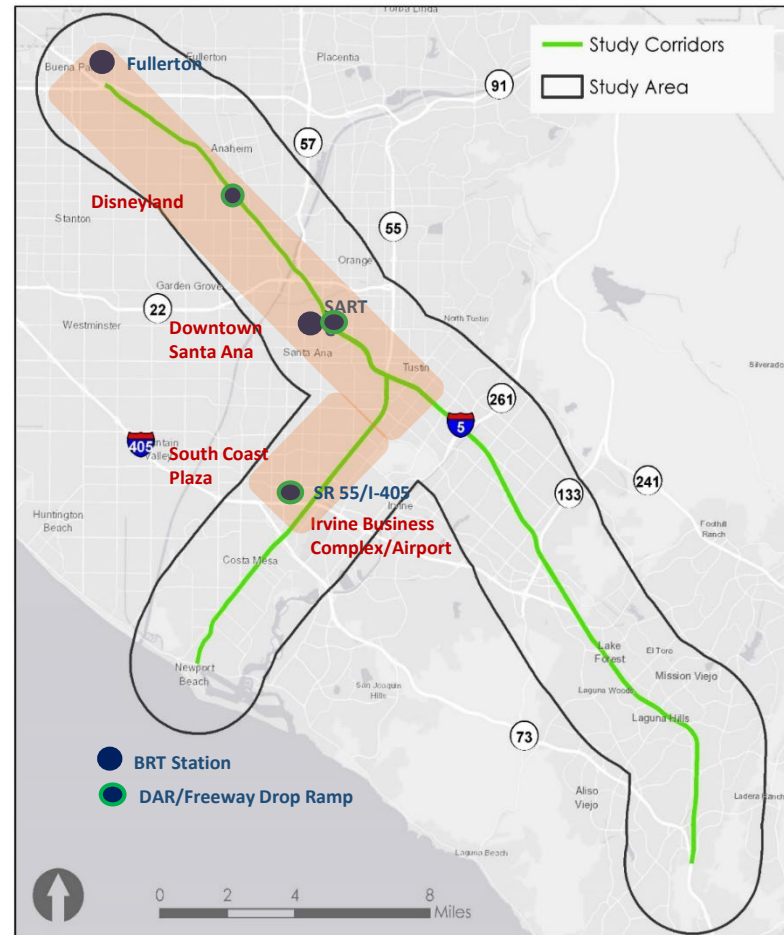
### 3. Santa Ana to Newport Beach – All Day BRT Stations and Transit Connections:

- SARTC:  
(Streetcar, Metrolink/Amtrak, Routes 59, 83, 206, 463, 560, 862)
- McFadden Avenue:  
(Route 66)
- Bristol Street:  
(Routes 57, 71, new shuttles)
- 17th Street  
(Route 71)
- Hoag Hospital:  
(Routes 47, 55, 71)

# Concept 4



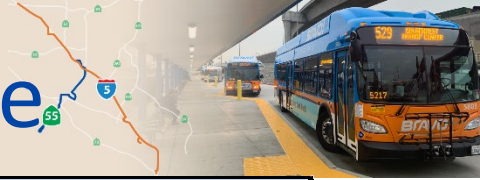
## OC BRT Freeway Corridors Existing Conditions Study Area



### 4. Fullerton to Irvine – All Day BRT (Early Option) Stations and Connections:

- Fullerton: (Routes 25, 26, 30, 529, 721)
- Disneyland: (Routes 47, 50, DisneyShuttles)
- SARTC: (Streetcar, Metrolink/Amtrak, Routes 59, 83, 206, 463, 560, 862)
- Irvine Business Complex/Airport/  
South Coast Plaza—  
(BRT Circulation and/or Shuttles; Routes 55, 57/57X, 76, 86, 463)

# Existing and Proposed Infrastructure



STOP LOCATION	FREEWAY	EXISTING RAMPS	POTENTIAL ADDITIONS*
Fullerton Park and Ride	I-5	Magnolia Avenue ramps	HOV ramps
La Palma	I-5	La Palma Avenue ramps	NB inline station
Disneyland	I-5	SB Disneyland Drive DAR; NB Disney Way DAR	Use existing DARs at Gene Autry Way for Inline stations
Santa Ana Regional Transportation Center (SARTC)	I-5/SR-55	SB Grand Ave. DAR	NB DARs
Irvine Spectrum	I-5	Northfacing Barranca Parkway DARs	Southfacing Barranca Parkway DARs
Jeffrey Road PNR	I-5	SB to SB ramps	NB inline station
Laguna Hills	I-5	LHTC PNR	Inline stations
Laguna Niguel/Mission Viejo Metrolink Station	I-5	Crown Valley Pkwy ramps	Northfacing DARs
SR-55/E. Alton Avenue	SR-55	MacArthur Blvd ramps	NB & SB DARs
Costa Mesa/Fair Dr.	SR-55	Fair Drive ramps	Inline stations
17th Street	SR-55	17th Street intersection	Shoulder transit lane
Hoag Hospital	SR-55	On-street stop	

\* Potential additions are preliminary concepts for new direct access ramps or inline stations that still need to be thoroughly vetted, and that will be screened down to a short list of strategic improvements.

DAR = Direct access ramp		NB = Northbound	
HOV = High occupancy vehicle		SB = Southbound	





# Next Steps



- Online survey/public input
- Finalize conceptual routes
  - Operations
  - Stops
  - Existing and needed infrastructure (ramps, stations, parking)
- Evaluate conceptual routes (develop cost and ridership estimates)
- Draft Final Report (Mar-April 2021)

# Stay Involved



**PLEASE TAKE our survey...**

***Share your opinions, today!***

- [FreewayBusSurvey.com](http://FreewayBusSurvey.com)
- *Or dial 909-494-2900*

**Sign-up for study updates at:**

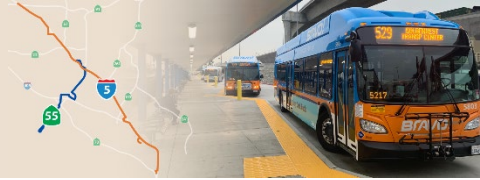
- [octa.net/FreewayBRT](http://octa.net/FreewayBRT)



The website has all you need to stay informed:

- Fact sheets, presentations, reports, meeting notices, etc.

# Live Webinar



Join me and the team for a live webinar on:

## *Virtual Public Meeting*

Wednesday, October 14, 2020  
5:30 – 6:30 p.m.

*Visit the website [octa.net/FreewayBRT](http://octa.net/FreewayBRT) to register to attend.*

### **Project Manager**

Eric Carlson

(714) 560-5381

[ecarlson@octa.net](mailto:ecarlson@octa.net)

### **Community Outreach**

Marissa Espino

(714) 560-5607

[mespino@octa.net](mailto:mespino@octa.net)







Thank you for joining us.