



# DIRECTIONS 2045

LONG RANGE TRANSPORTATION PLAN

Citizens Advisory Committee

January 18, 2022

*Sustainable, equitable, and innovative transportation solutions.*



# Public Engagement

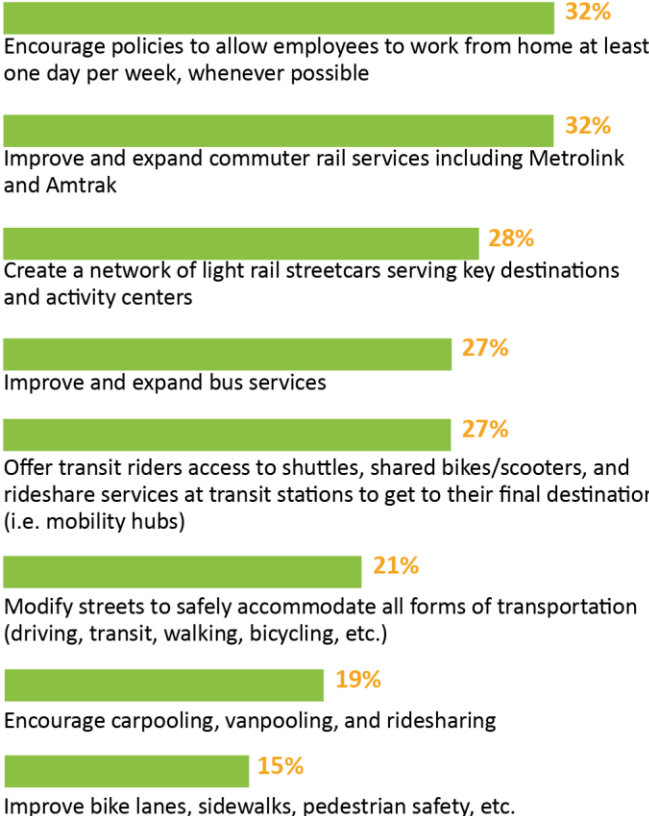
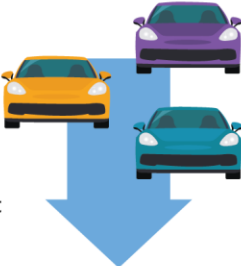
---

- More than 1,800 surveys
- Received feedback from:
  - Key stakeholders
  - OCTA's public committees
  - Public webinar
  - Pop-ups



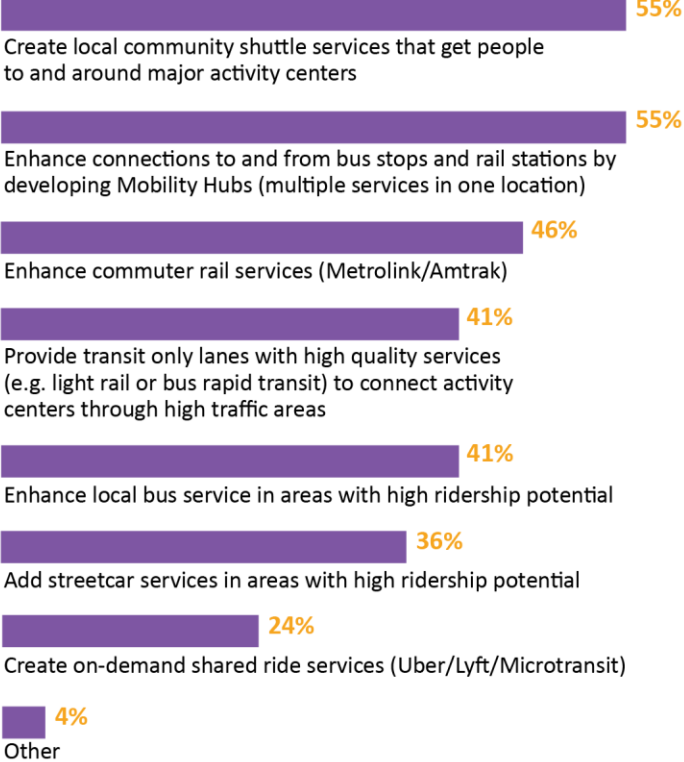
# Community Survey Findings 1

Select your top two strategies to help decrease traffic congestion and reduce how much people need to drive in the future.



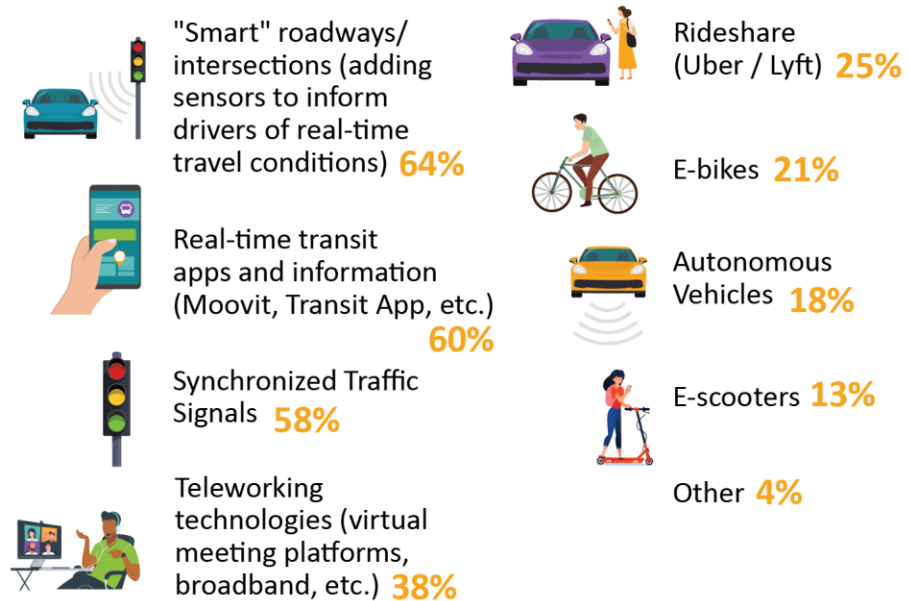
Which transit improvements do you think could help relieve congestion the most in Orange County?

(Select top three)

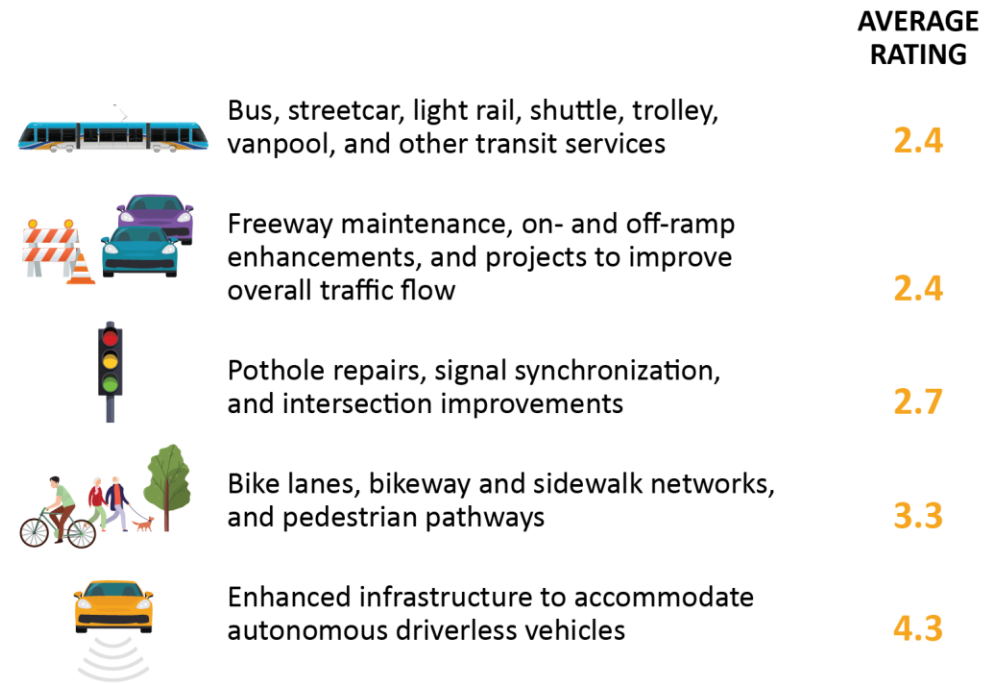


# Community Survey Findings 2

**OCTA is looking to improve and introduce more technology into transportation. What do you think OCTA should be focused on?** (Select top three)

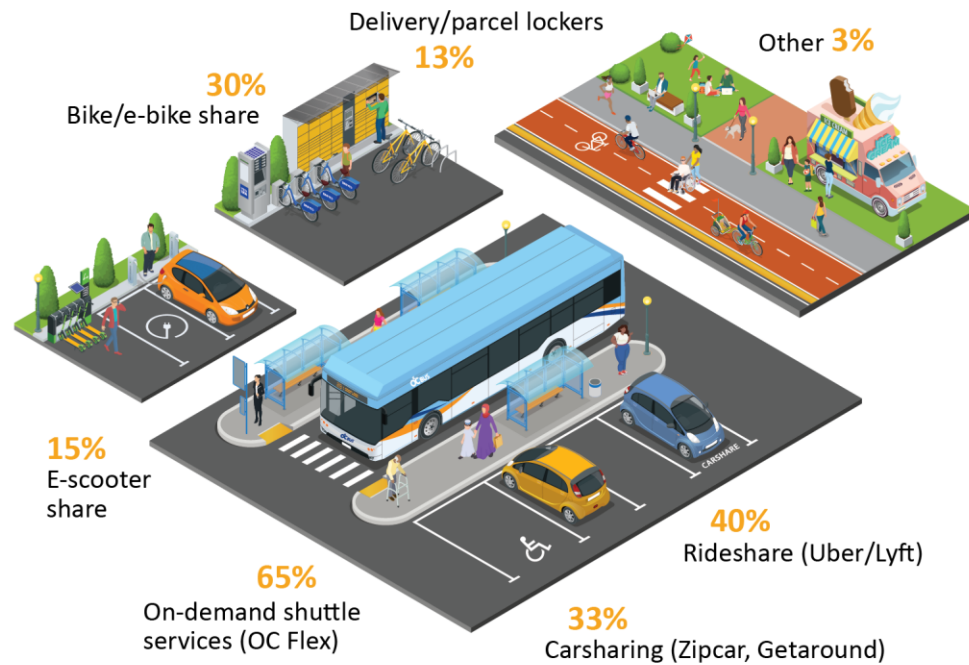


**Rank the following transportation improvements in order of importance.** (1 = most important; 5 = less important)



# Community Survey Findings 3

## Which two services would you like offered at Mobility Hubs? (Select top two)

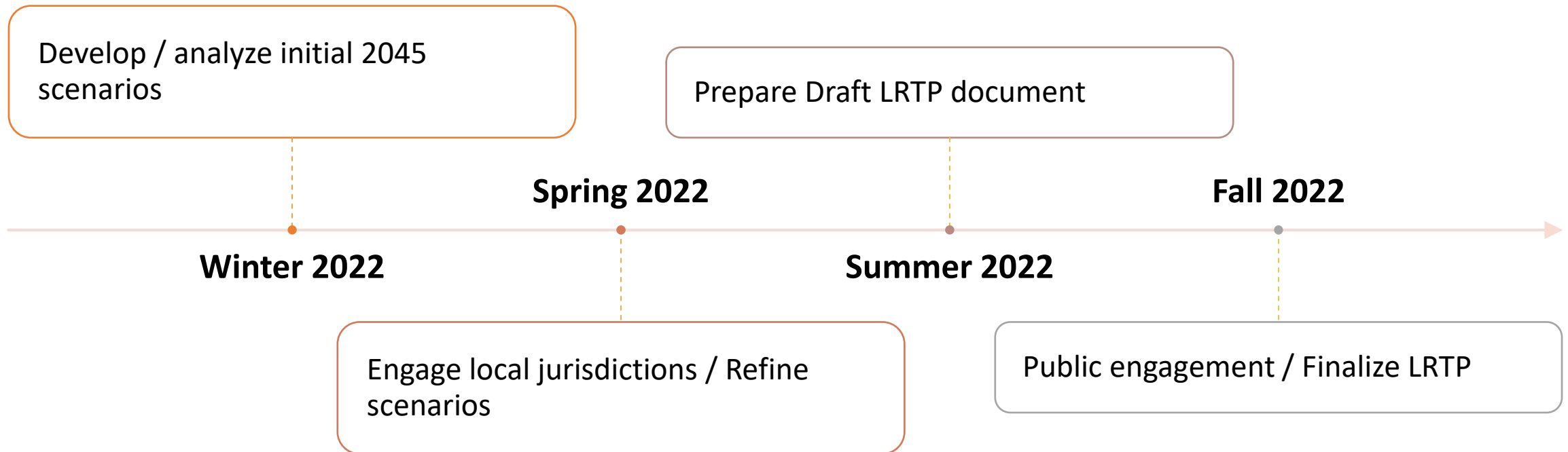


## Where should Mobility Hubs be placed in Orange County? (Select top two)



# 2022 Look-Ahead

---





**THANK YOU**

---

DIRECTIONS 2045 LONG RANGE TRANSPORTATION PLAN

