

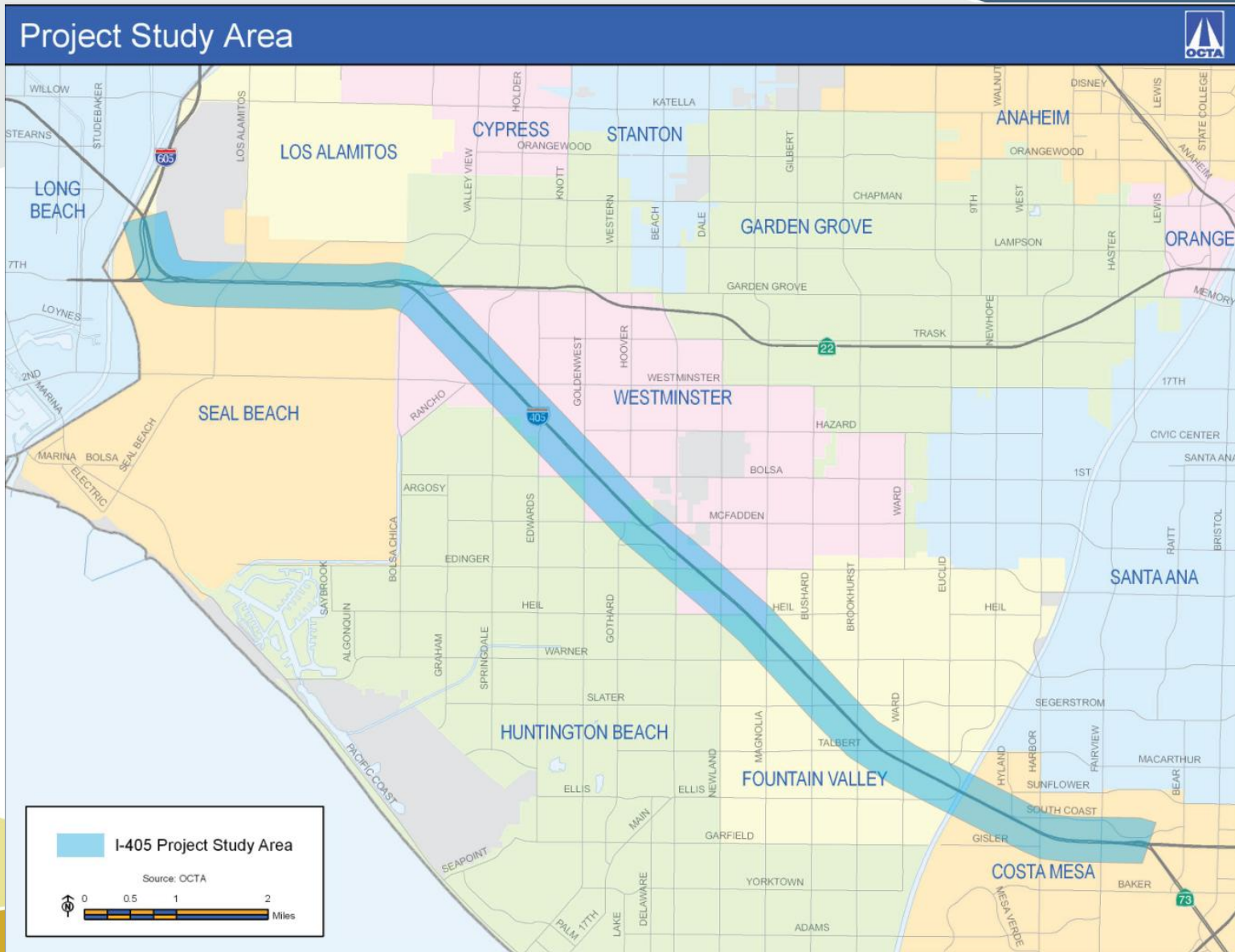
I-405 Improvement Project



***Draft EIR / EIS Public Hearings
June 2012***



Interstate 405 Project Location



Noticing

- Federal Register
- E-Blast to 7,000 stakeholders
- Newspaper advertisements
- Print media
- Posters in city halls, community centers and at other local destinations
- Direct mail postcard within ¼-mile radius
- Rossmoor banner

Public Hearing Format

- Open House
- Presentation
- Technical Stations and Q & A
 - Interchange renderings
 - Right of way
 - Sound walls
 - Traffic simulation
 - Comment Submissions



**I-405 Improvement Project
Public Hearing**

Welcome!

Thank you for taking the time to join us at the I-405 Improvement Project public hearing. Tonight you will learn more about:

- The I-405 Improvement Project and the Environmental Review Process
- Opportunities for you to provide your formal comments regarding the Draft Environmental Impact report/statement
- Next steps in the environmental review process

There will also be opportunities for you to sign up to receive project updates throughout the evening.

Agenda

- I. Open House
- II. Presentation
- III. Technical stations and Q&A
 - Interchange renderings
 - Right of way
 - Sound walls
 - Traffic simulation
 - Submitting comments


During the public hearing, you are welcome to interact with the project team, OCTA and Caltrans staff to answer your questions.

You also have the opportunity to submit verbal and written comments.

Your participation today helps us shape the future of transportation and mobility throughout Orange County. Thank you for coming!

Turn this page over and follow our "Station Road Map"

For more information, please contact:
Christina Byrne
Community Relations Officer
(714) 560-5717
cbyrne@octa.net
www.octa.net/405improvement
www.facebook.com/405improvement



Project Need

- Both general purpose (GP) and High Occupancy Vehicle (HOV) traffic exceeds available capacity
- GP lanes have operational and geometric deficiencies
- Interchanges have geometric, storage, operational deficiencies
- Limitations in detecting, rapidly responding to, and quickly clearing traffic accidents from traffic lanes

Project History

- Major Investment Study 2003-2006
- Project Study Report 2007-2008
- Environmental Process Initiated Fall 2009



- Policy Working Group
- Stakeholder Working Group
- 90+ Civic and Community Presentations



Project Schedule

Prepare Draft EIR/EIS*	2009 – 2012
Public Review	May 18 - July 2, 2012
Preferred Alternative/ Finalize EIR/EIS	July 2012 – April 2013
Design and Construction	2015 - 2019

*Environmental Impact Report / Environmental Impact Statement



General Project Improvements



- Builds bridges, overcrossings to Master Plan of Arterial Highways standards
- Improves local streets & on/off ramps
- Adds bike lanes, sidewalks
- Maintains or improves existing sound walls
- Constructs additional sound walls

VIDEO



Existing Condition



Rendering of I-405 looking northwest at Springdale St. overcrossing

Alternative 1 – Adds one GP lane in each direction



Alternative 2 – Adds two GP lanes in each direction

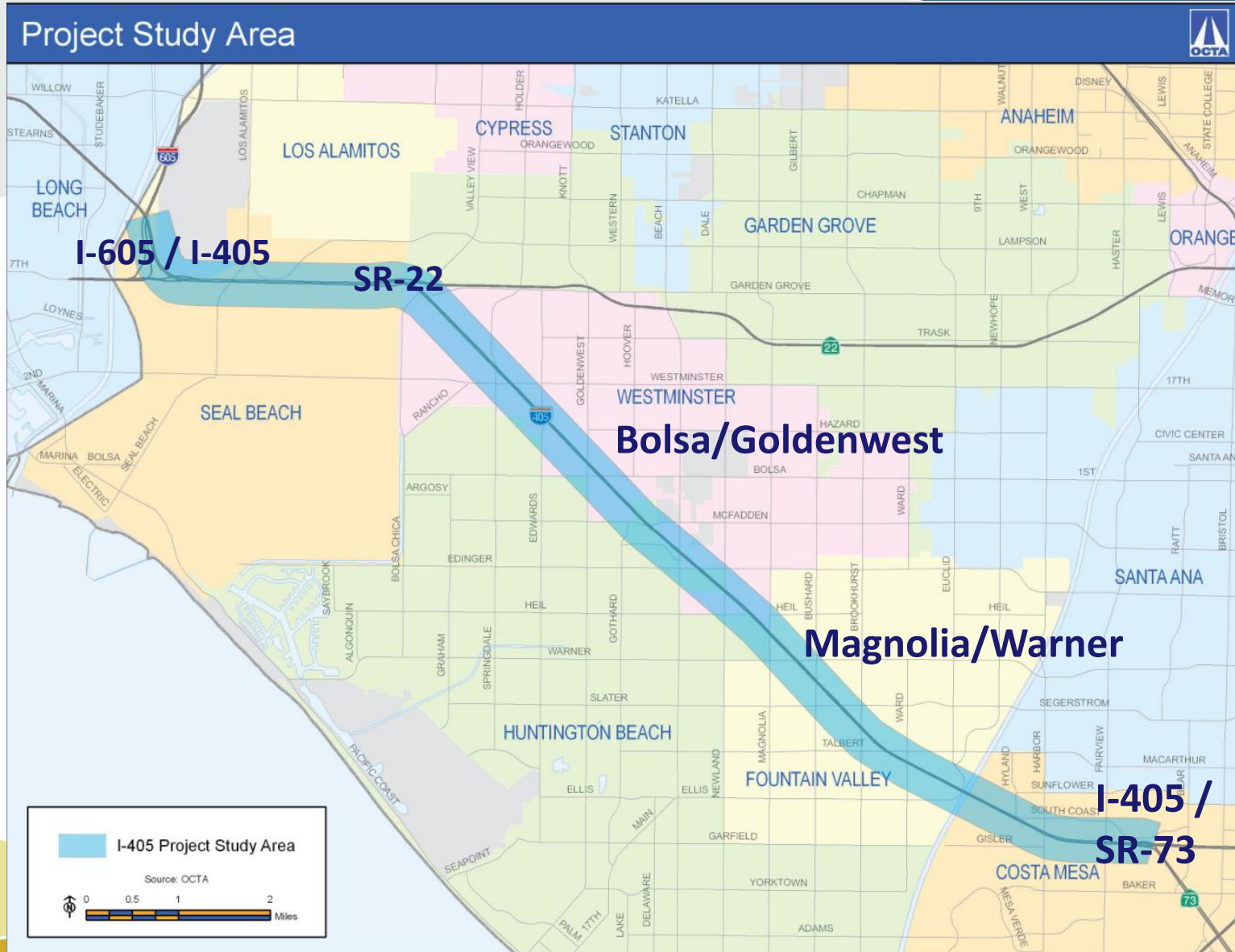


Alternative 3 – Adds one GP and one Express Lane



Existing carpool lane to be combined with the Express Lane providing a dual lane Express Facility, like SR-91

Access Points



Mobility by Alternative - 2040

	No Build	Alt. 1	Alt. 2	Alt. 3
Peak Hour Throughput*	6000 vehicles per hour	7200 vehicles per hour	8400 vehicles per hour	9500 vehicles per hour
Average Daily Traffic	288,000 - 427,000	321,000 - 475,000	344,000 - 509,000	352,000- 512,000
Travel Time SR-73 to I-605**	133 min GP 121 min HOV	57 min GP 54 min HOV	28 min GP 27 min HOV	29 min GP 13 min Express

* Potential throughput, peak hour, one direction

**PM peak period, northbound

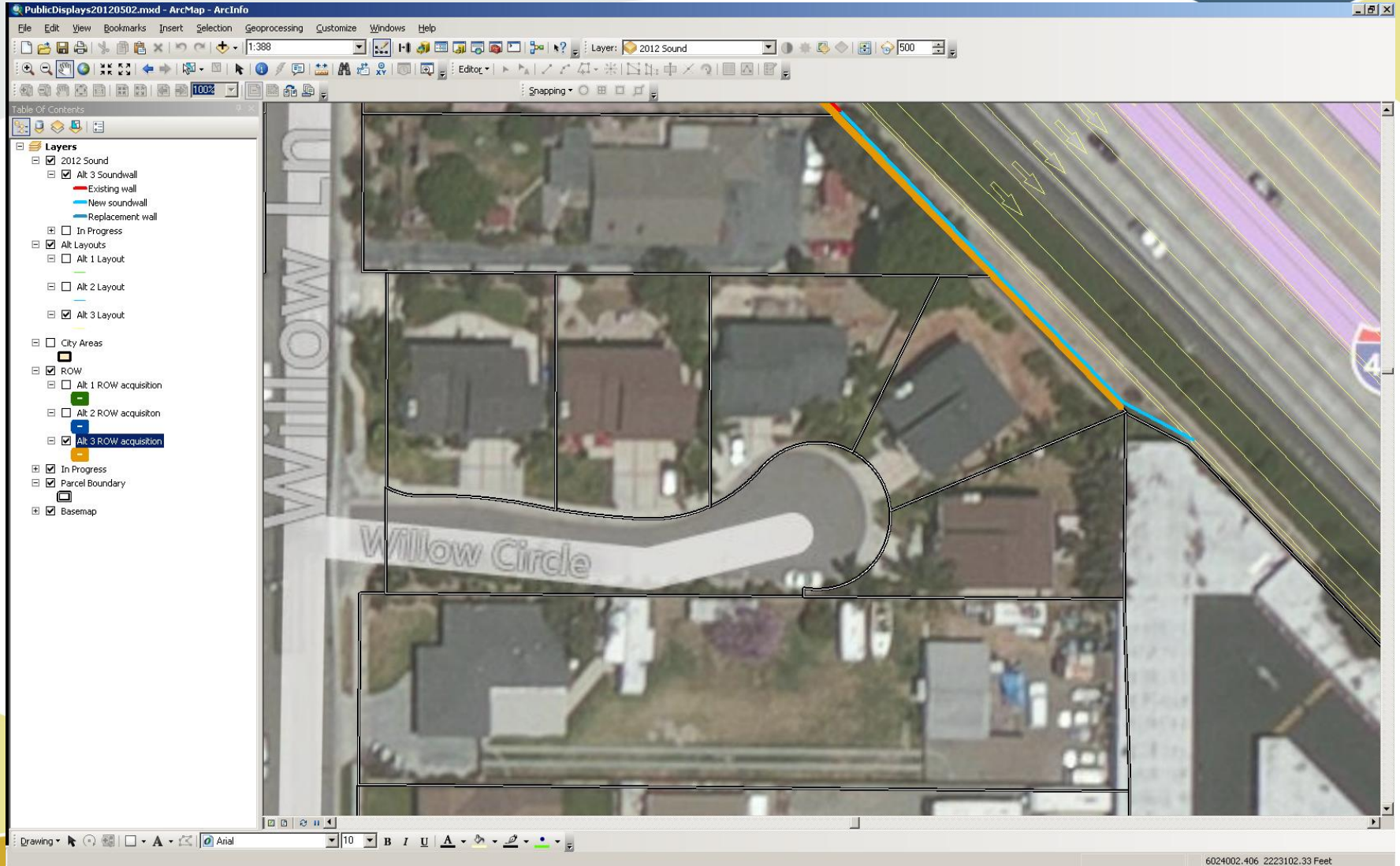


Respectful of Adjacent Properties

- Right of way impacts minimized
- No full residential acquisitions
- Full business acquisitions minimized to four or less
- Sound walls to reduce noise levels



Right of Way Stations




Environmental Document

- Caltrans website
 - www.dot.ca.gov/dist12/405/index.htm
- OCTA website
 - Web content & links to DEIR/DEIS
- Corridor cities and county
 - Web content & links to DEIR/DEIS
- Hard copy at local libraries
- Hard copy at Caltrans and OCTA

**San Diego Freeway
(I-405) Improvement Project**



ORANGE AND LOS ANGELES COUNTIES, CALIFORNIA
12-ORA-405 PM 9.3/24.2 / 07-LA-405 PM 0.0/1.2
12-ORA-22 PM R0.7/R3.8 / 12-ORA-22 PM R0.5/R0.7
12-ORA-73 PM R27.2/R27.8 / 12-ORA-605 PM 3.5/R1.6
07-LA-605 PM R0.0/R1.2
EA 0H1000 / PN 1200000180

**Draft Environmental Impact Report/
Environmental Impact Statement**



Prepared by the
State of California Department of Transportation

The environmental review, consultation, and any other action in accordance with applicable federal laws for this project is being, or has been, carried out by the State of California Department of Transportation under its assumption of responsibility pursuant to 23 U.S.C. 327.

May 2012

Comments

- Court reporter for verbal comments
- Provide written comments at public hearings or mail to:

Smita Deshpande
Caltrans, District 12
2201 Dupont Drive, Suite 200
Irvine, CA 92612
- E-mail comments to:
 - 405.dedcomments.parsons@parsons.com
- Online information and link to e-mail address via OCTA website



Public Hearings

6 p.m.

- Orange Coast College, Costa Mesa June 4
- Westminster Community Center June 6
- Rush Park Auditorium, Rossmoor June 7
- Fountain Valley Senior Center June 14

Thank You for Attending



www.octa.net/405improvement



www.dot.ca.gov/dist12/405/index.htm



www.facebook.com/405improvement



The I-405 IMPROVEMENT PROJECT
draft EIR/EIS public review period
May 18 - July 2



[CLICK HERE FOR MORE INFORMATION](#)

