

Report on the State Highway Operation and Protection Program



Orange County Freeway/Highway Projects (2010/2011)

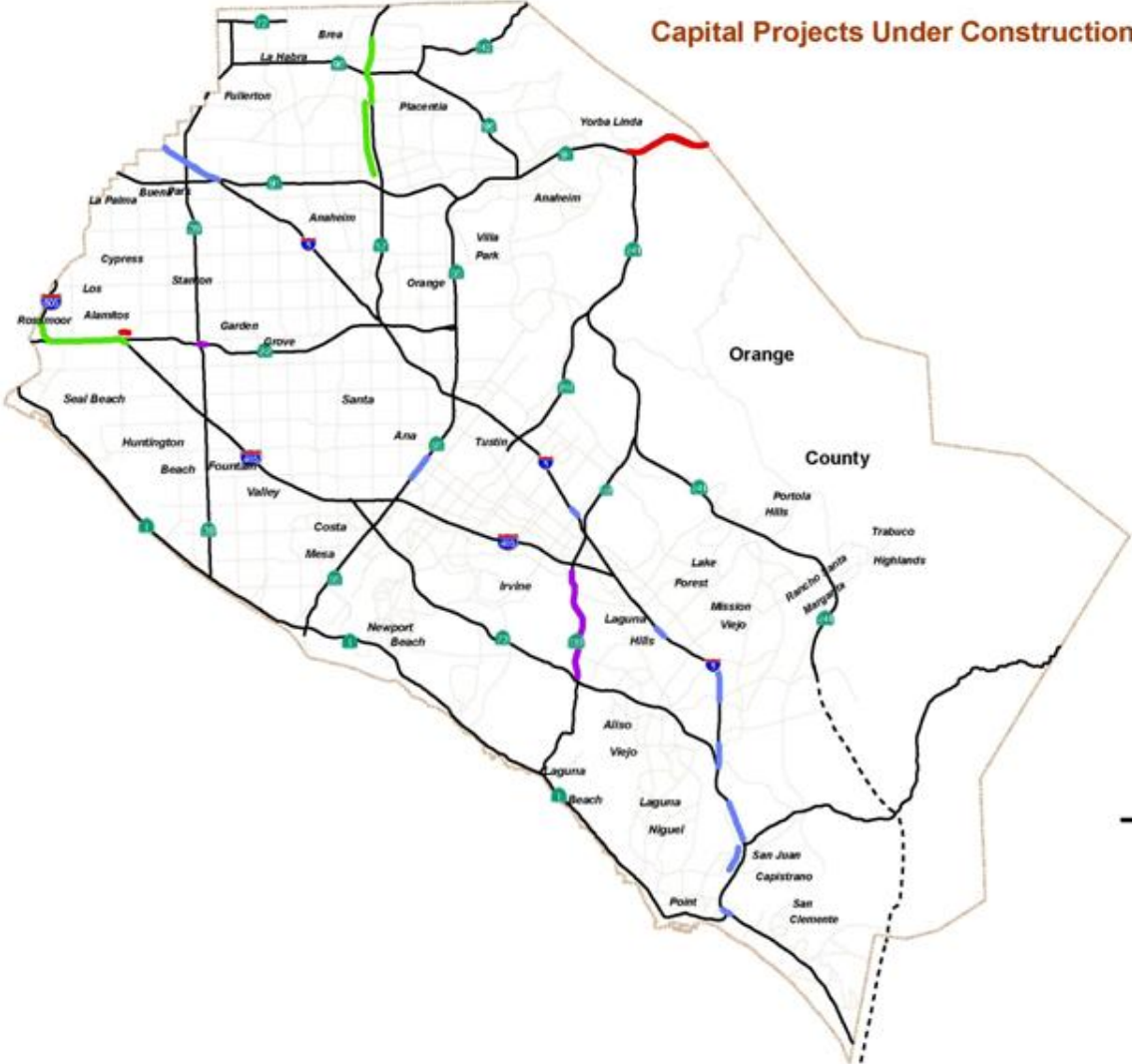
District 12 @ A Glance

- Centerline Miles 279
 - Freeway 140
 - Toll Roads 51
 - Conventional 88
 - Express Lanes 10 (Included in Freeway)
- Lane Miles 2004
 - Mix Flow 1059
 - HOV 226
 - Toll Roads 314
 - Conventional 365
 - Express lanes 40
- HOV Direct Connectors 6

Orange County Freeway Improvements

- Capital Projects under construction/completed in 10/11 FY
- SHOPP/Maintenance Projects under construction/completed in 10/11 FY

Capital Projects Under Construction / Completed In 10/11 FY



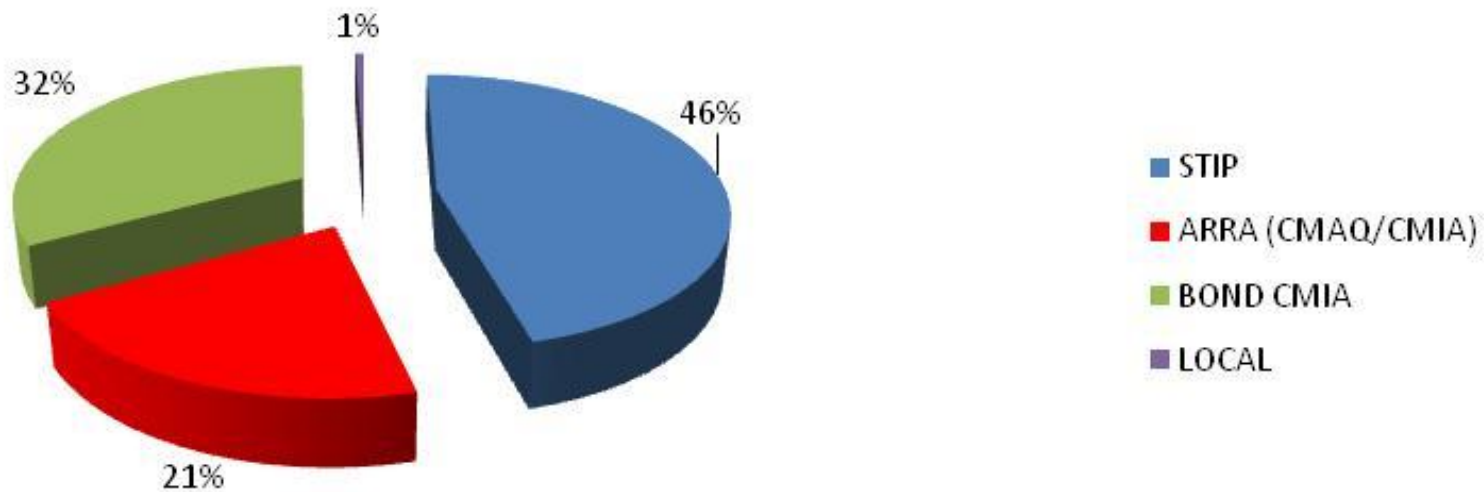
Projects Type

- ARRA(CMAQ/CMA)
- BOND CMA
- LOCAL
- STIP

- Interstate Route
- State Route
- State Highway System



CAPITAL PROJECTS UNDER CONSTRUCTION/COMPLETED IN 2010/2011 FY



SHOPP/ Maintenance Projects Under Construction / Completed In 10/11 FY

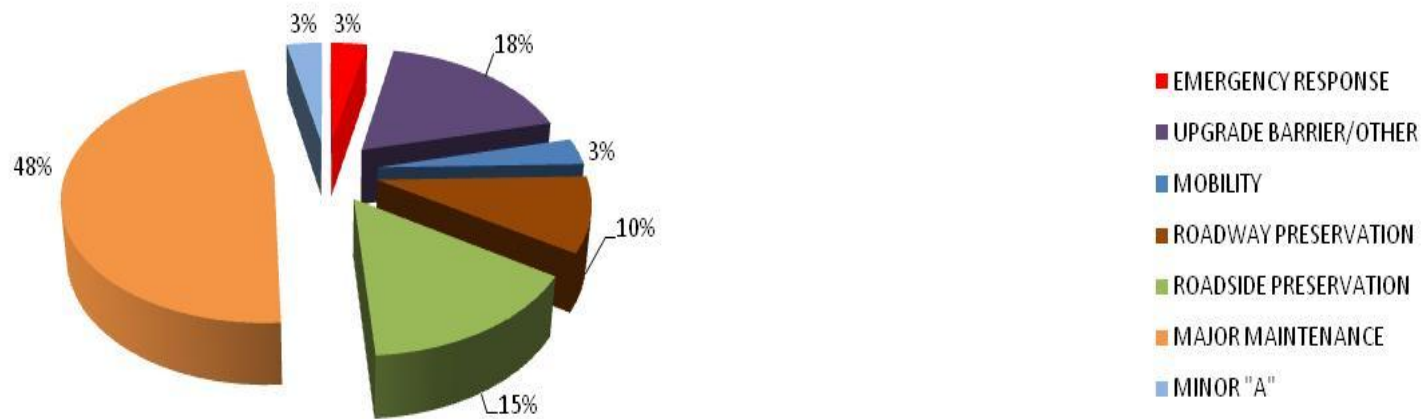


- Projects Type**
- EMERGENCY RESPONSE
 - UPGRADE BARRIER / OTHER
 - MAJOR MAINTENANCE
 - MNOR A
 - ROADSIDE PRESERVATION
 - ROADWAY PRESERVATION
 - MOBILITY
-
- Interstate Route
 - State Route
 - State Highway System



11/24/10

SHOPP/MAINTENANCE PROJECTS UNDER CONSTRUCTION/COMPLETED IN 2010/2011 FY



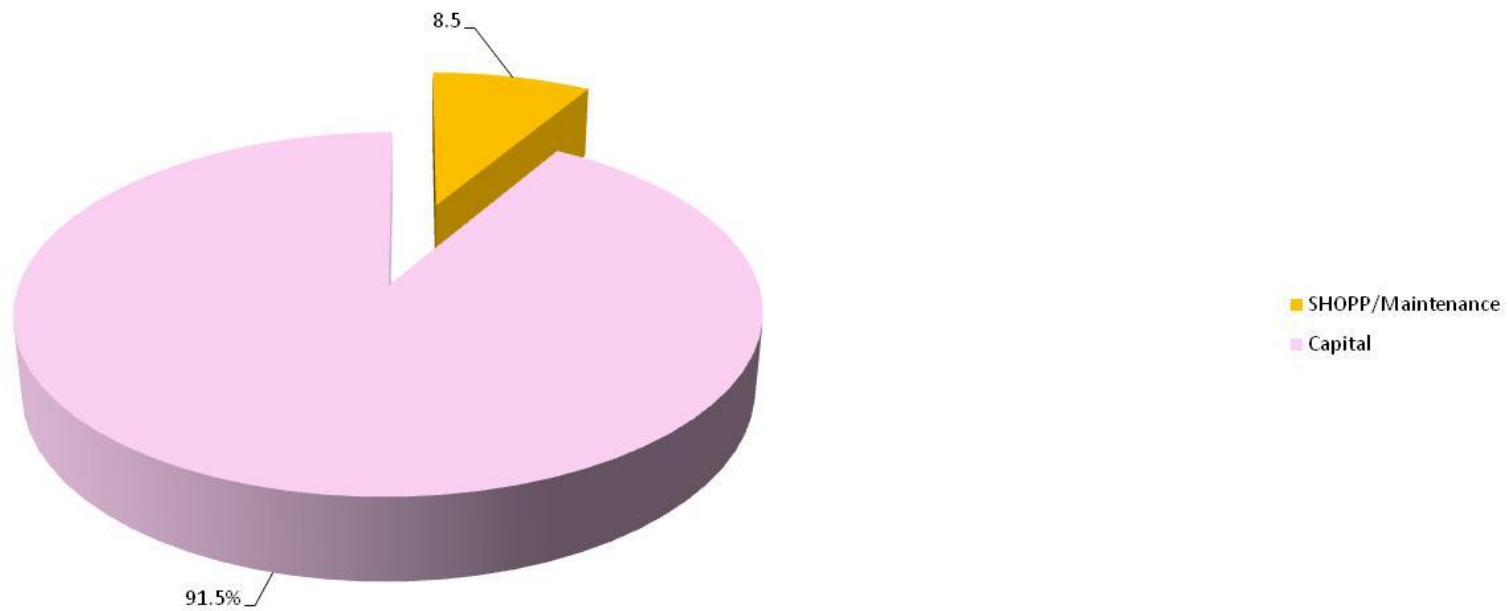
SHOPP/ Maintenance & Capital Projects Under Construction / Completed In 10/11 FY



- Projects Type**
- EMERGENCY RESPONSE
 - UPGRADE BARRIER / OTHER
 - MAJOR MAINTENANCE
 - MINOR A
 - ROADSIDE PRESERVATION
 - ROADWAY PRESERVATION
 - MOBILITY
 - NON CALTRANS
-
- Interstate Route
 - State Route
 - State Highway System



**ALL PROJECTS UNDER CONSTRUCTION/COMPLETED
IN 2010/2011 FY**



Roadway Preservation

NB Beach Blvd. north of Imperial



Safety

NB 405 @ Magnolia, REACT crash cushion end treatment



Roadside Preservation

SB 405 @ 55 Highway Planting

Caltrans

Major Maintenance

ADA improvement on Whittier Blvd. @ Beach Blvd.



Bridge Preservation (SR 55 @ Baker)

Methacrylate (sealant) on SB 55 @ Baker

Mobility

Changeable Message Sign



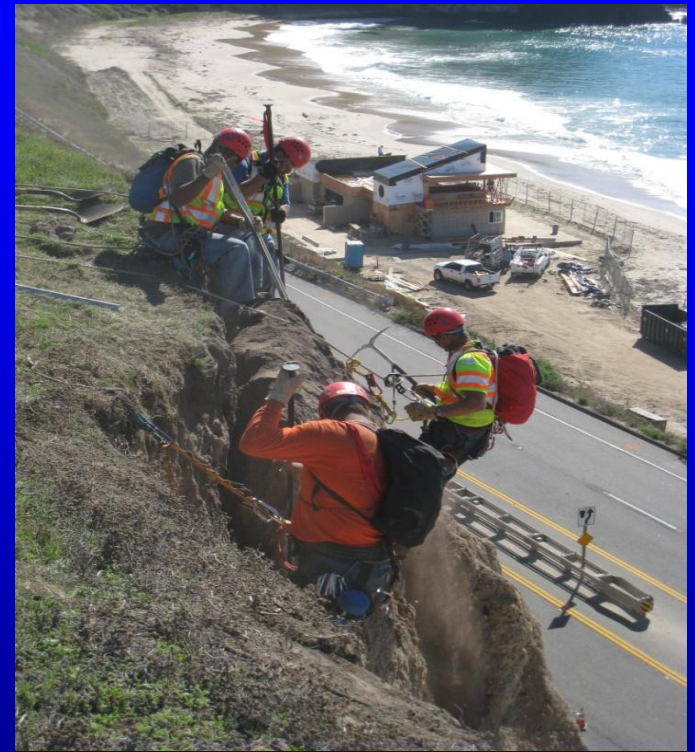
Pavement Preservation



NB 73 north of Laguna Canyon Road

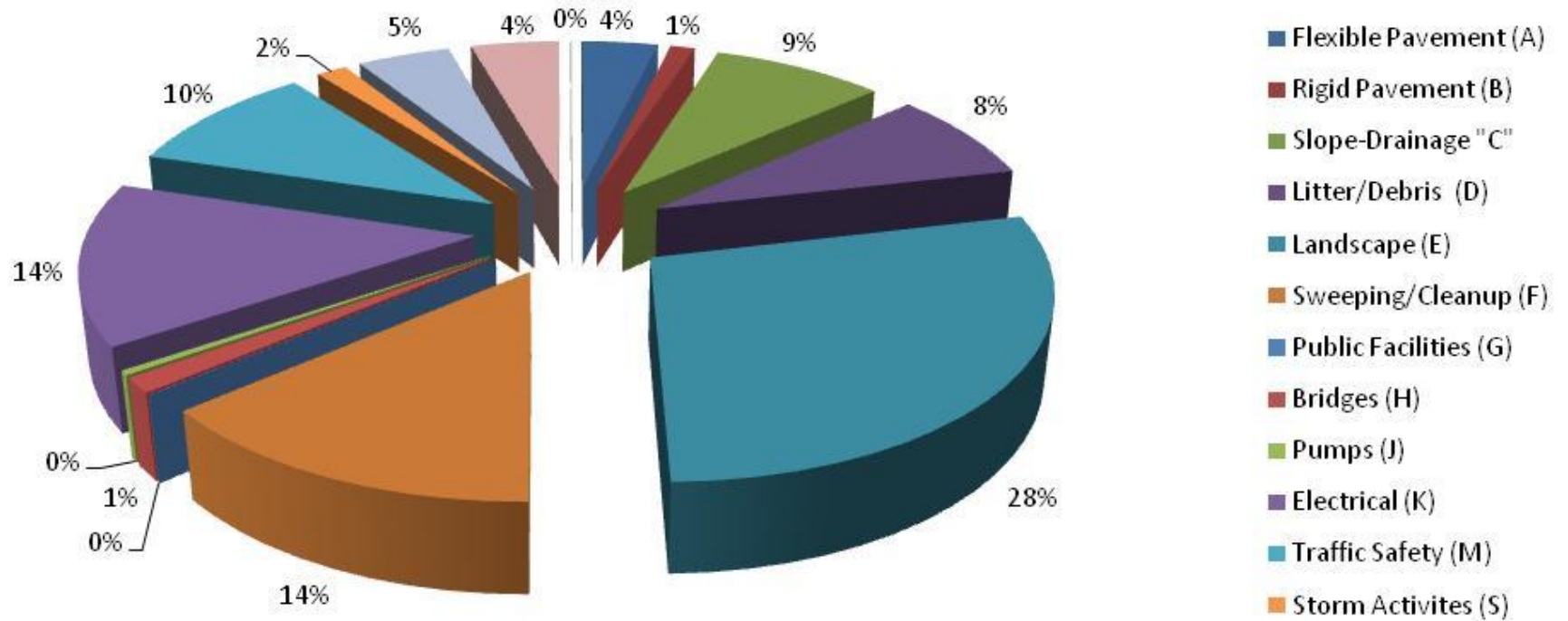
Emergency Response

Crystal Cove
@ PCH



Routine Maintenance

2005-2010



Flexible Pavement



Rigid Pavement



Drainage



Landscape



Storm Activities



Sweeping/Cleanup



Bridge Repair



Traffic Safety



Types of Closures

- Planned Work
- Unplanned Work

Questions