

Renewed Measure M Transit Funding Program Guidelines

Board of Directors' Meeting
November 24, 2008



Renewed Measure M (M2) Transit Funding

- 25 percent of net revenues
- Four of six programs competitive
- Guidelines set the stage for future call for projects



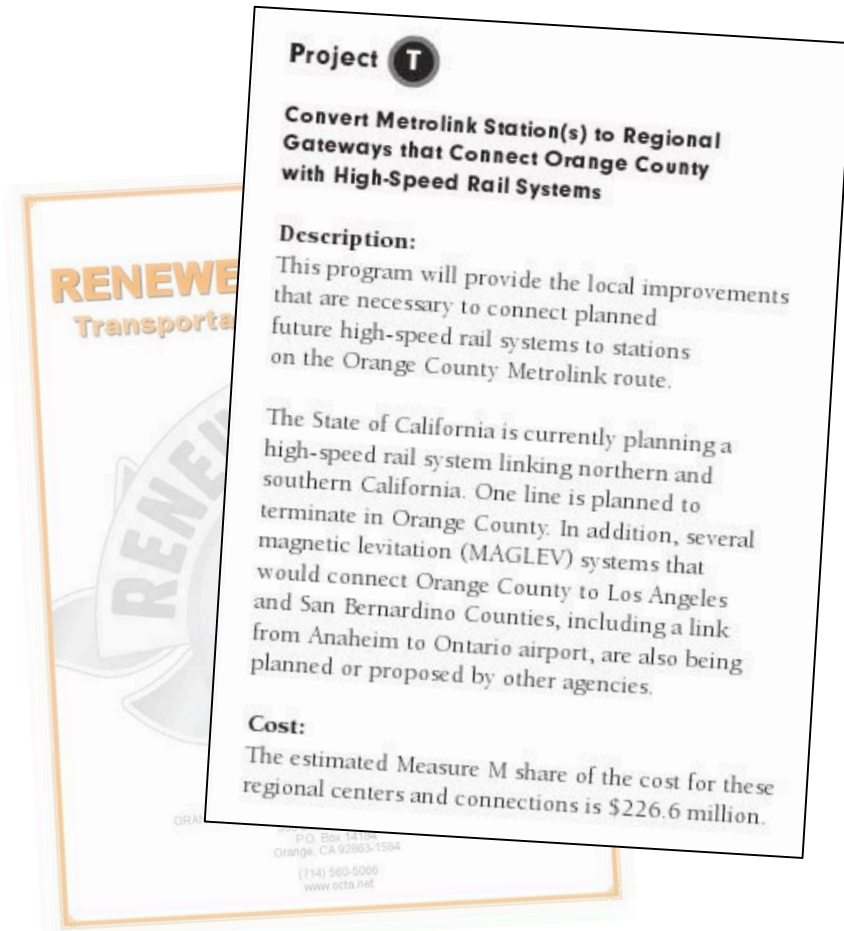
M2 Transit Programs

M2 Programs and Competition

		Mandated Competitive Programs	Non-competitive Programs	Potentially Competitive Programs
R	High-Frequency Metrolink		X	
S	Transit Extensions to Metrolink	X		
T	Regional Gateways	<i>Today</i> X		
U	Senior/Disabled Program		X	
W	Safe Transit Stops			X
V	Community Circulators	X		

Project T – Metrolink Gateways

- Metrolink station gateways to high-speed rail
- About 2 percent of net M2 revenues
- Policy framework presented today



Initial “T” Programming

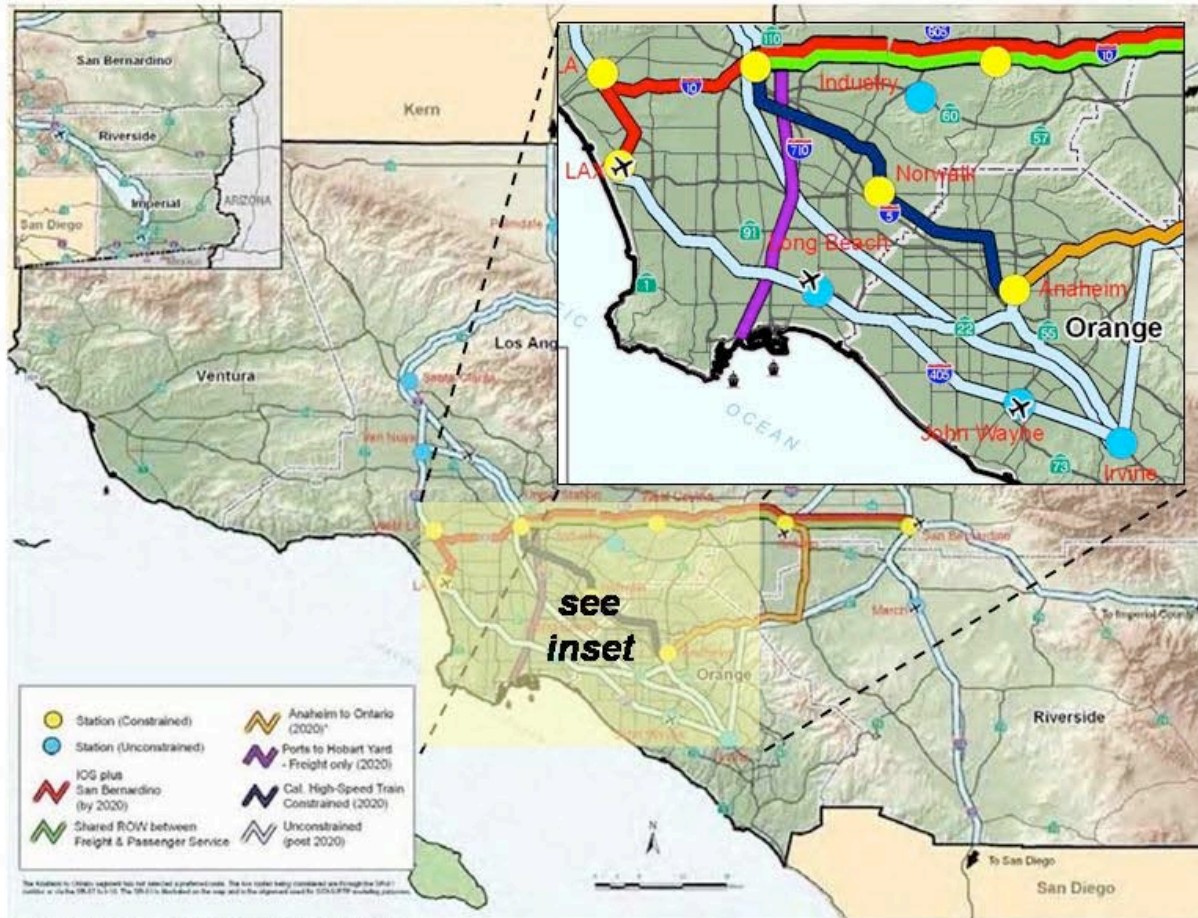
Fiscal Year	Project T Revenues (nominal dollars)	Project T Revenues (2007 dollars)
2011	\$ 1,441,794	\$ 1,359,465
2012	\$ 6,053,952	\$ 5,573,589
2013	\$ 6,350,461	\$ 5,716,424
2014	\$ 6,679,948	\$ 5,881,702
2015	\$ 7,006,081	\$ 6,038,735
2016	\$ 7,346,457	\$ 6,196,400
2017	\$ 7,674,258	\$ 6,336,558
2018	\$ 8,029,499	\$ 6,487,962
2019	\$ 8,402,147	\$ 6,644,043
2020	\$ 8,749,016	\$ 6,773,602
2021	\$ 9,112,891	\$ 6,909,841
2022	\$ 9,514,942	\$ 7,070,530
2023	\$ 9,922,382	\$ 7,228,331
2024	\$ 10,346,620	\$ 7,396,039
2025	\$ 10,794,804	\$ 7,570,062
2026	\$ 11,256,113	\$ 7,741,613
2027	\$ 11,748,040	\$ 7,921,358
2028	\$ 12,258,743	\$ 8,099,806
2029	\$ 12,785,181	\$ 8,274,027
2030	\$ 13,241,250	\$ 8,395,191
Total	\$ 178,714,580	\$ 133,615,279

“T” Pre-Requisites

- Funds to eligible agencies and other recommendations
- No Project T funds for station operations (existing policy)
- Designated Metrolink station:
 - On California high-speed rail system
 - In other high-speed rail plans

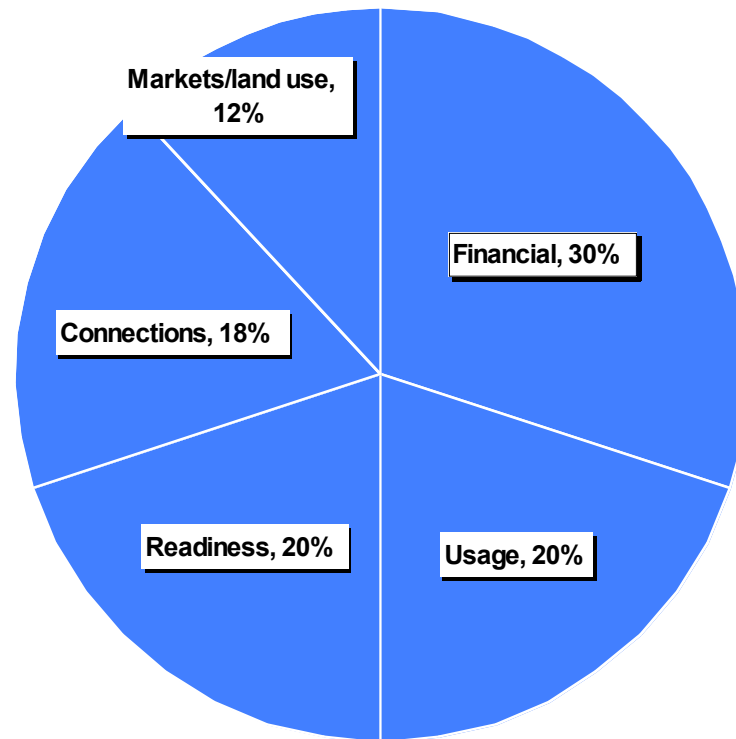
High-Speed Rail Plans

EXHIBIT 3.8 PROPOSED HIGH-SPEED REGIONAL TRANSPORT SYSTEM



Proposed Criteria

- Financial commitments
- Transit usage
- Project/high-speed rail readiness
- Intermodal connections
- Regional markets/land use



Criteria/Measures

Financial - 30%

- M2 percentage
- Commitments
- Concurrence

Usage - 20%

- Existing usage
- Future usage
- Consistency

Readiness - 20%

- System status
- Purchased land
- Project status

Connections - 18%

- Current modes
- Future modes
- Concurrence

Markets/Land Use - 12%

- Freeway accessibility
- Regional employment
- Job and housing density

Next Steps

- Review framework with Metrolink corridor cities
- Return in January 2009 with detailed Project T funding guideline recommendations