



Approval of March 2010 Service Change Program

Board of Directors
November 23, 2009



Public Participation

- Public Outreach
 - Bus customers & advocates
 - Citizens & Special Needs committees
 - Local agencies
 - Employers
 - Universities, colleges, schools
 - General public & media
- Public Involvement
 - 1,000 comments
 - mail, online, phone
 - 400 attendees
 - Board/community meetings



Public Input Guides Proposal

WHAT WE HEARD

Add revenue to
maintain service

Retain Night Owl

Maintain hours of
operation



PROPOSED

Reduced level of cuts
150K vs. 300K RVH

Operate from 4 a.m. to
1 a.m.

No span reductions

Public Input Guides Proposal

WHAT WE HEARD

Preserve footprint

Minimize ACCESS
impacts

Support for
shortened routes



PROPOSED

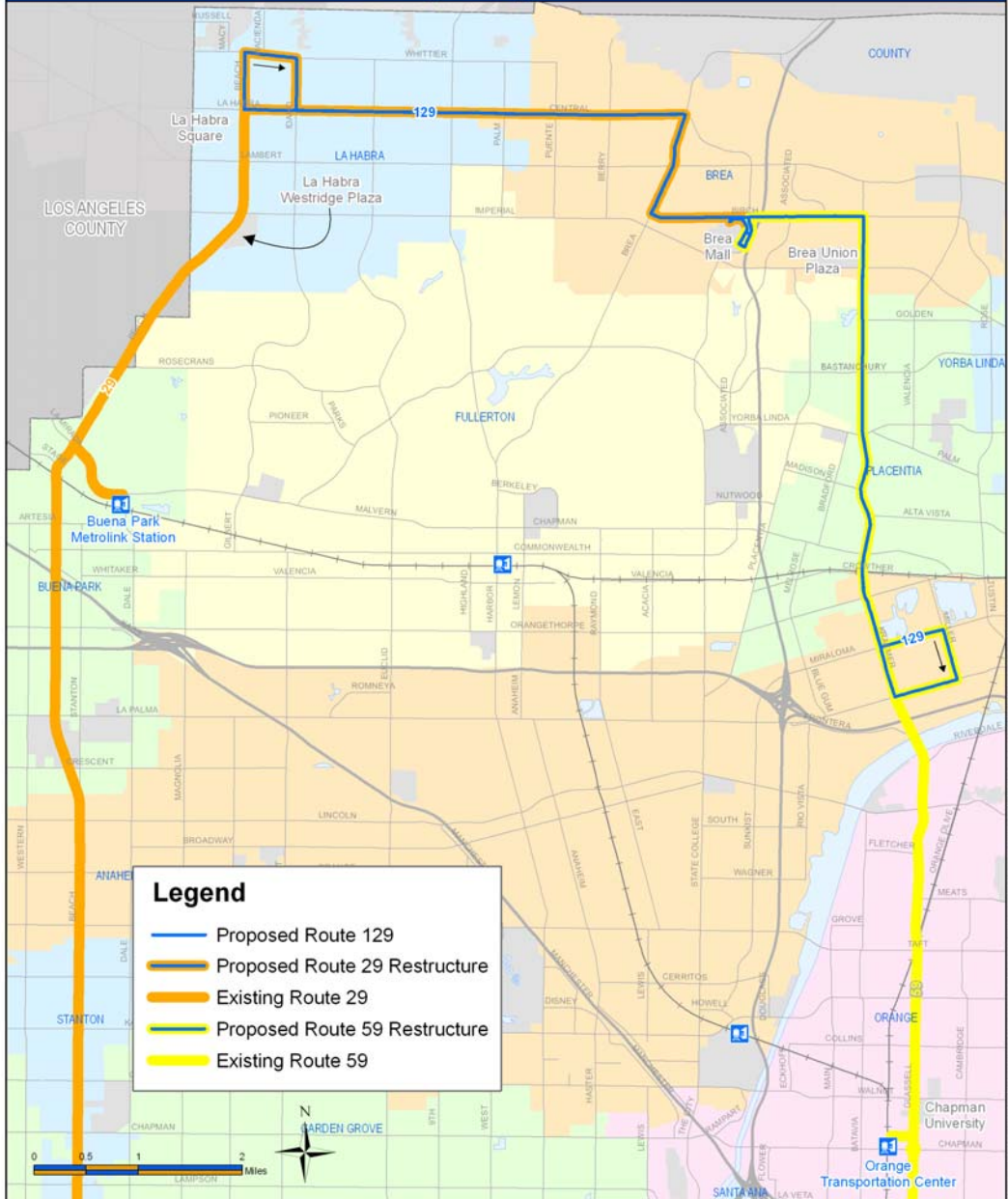
Geographic coverage
intact weekdays

Minimal ACCESS
impacts weekdays
Same day taxi option

Routes restructured for
improved efficiency

Proposed Route 129

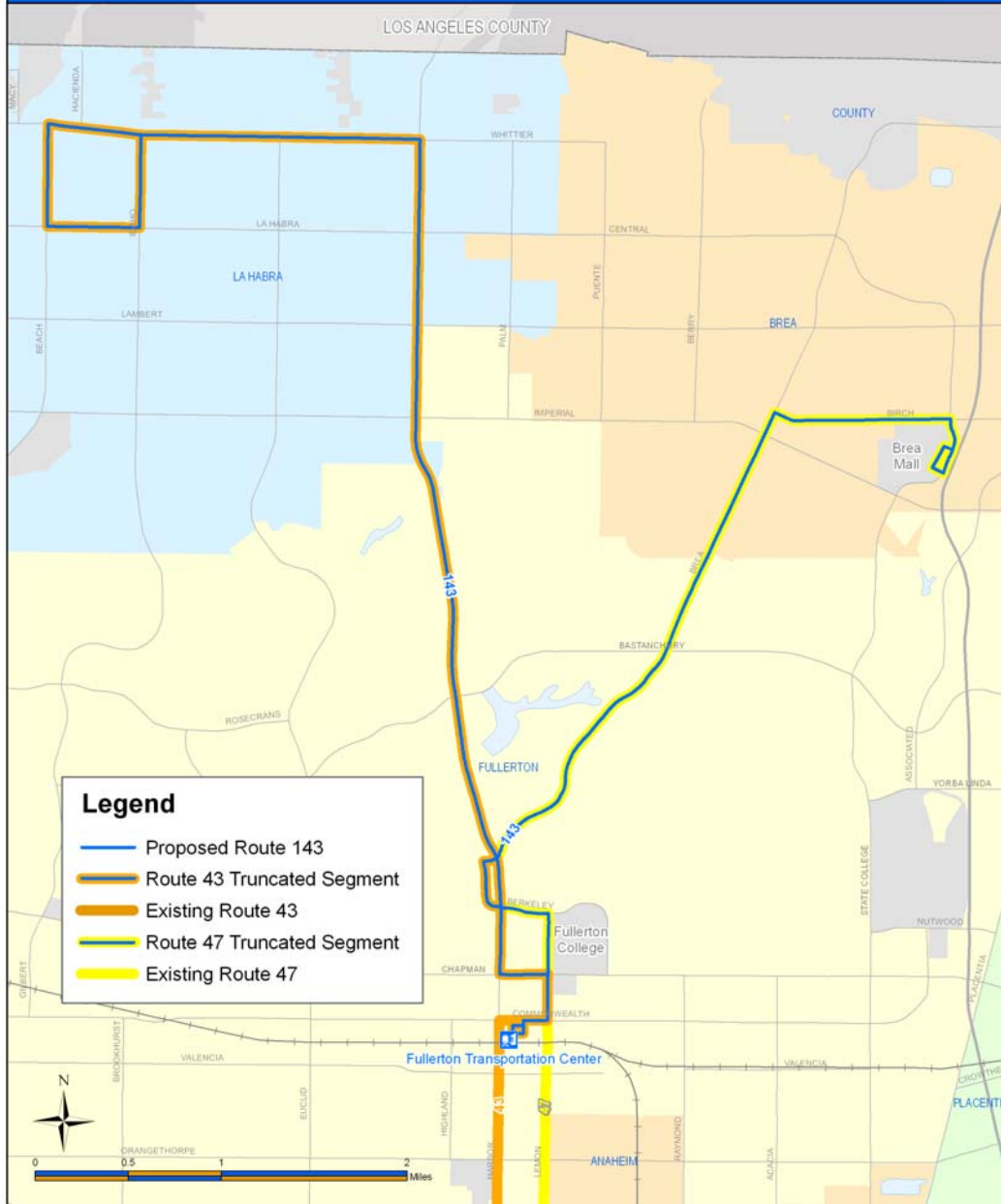
Buena Park Metrolink Station to Orange Transportation Center



- Shorten routes 29 and 59:
 - 29 at La Habra Square
 - 59 at Miraloma/Miller
- New route 129 fills gap

Proposed Route 143

La Habra to Brea Mall



- Shorten routes 43 and 47:
 - 43 at North Court
 - 47 at Fullerton Transportation Center
- Add route 143 to operate between La Habra and Brea Mall via Fullerton College

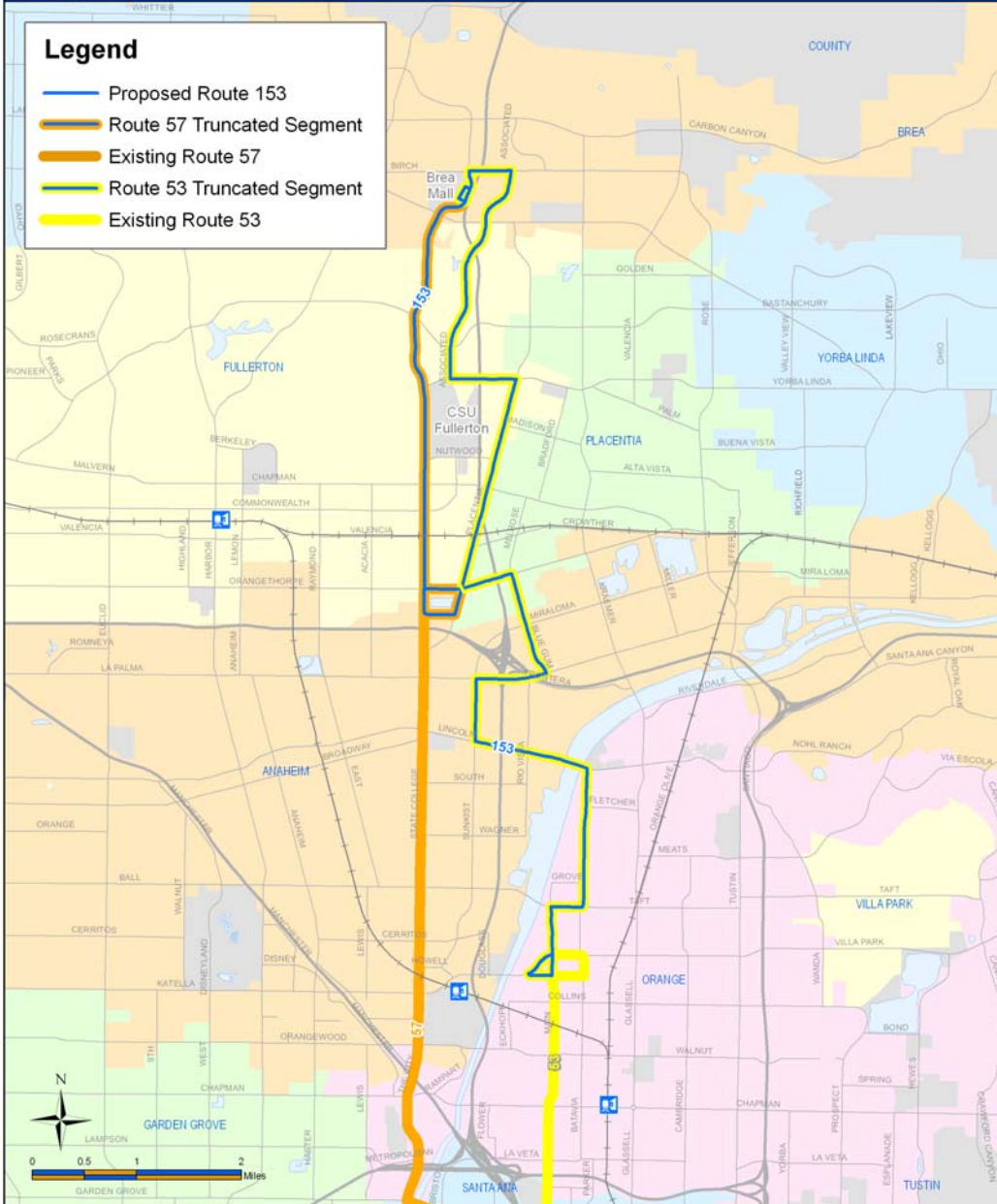
Proposed Route 153

Orangethorpe-State College to Main-Katella



Legend

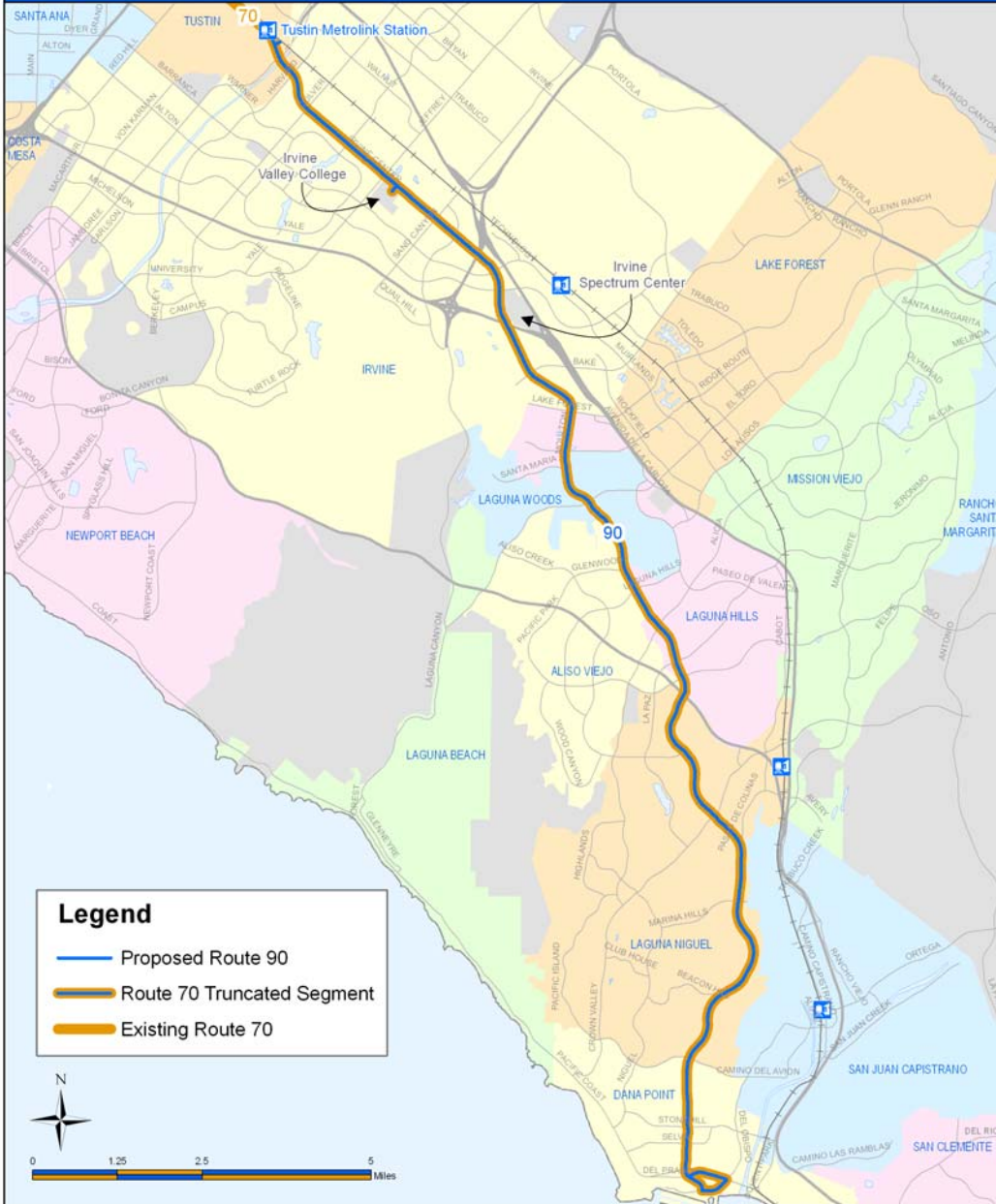
- Proposed Route 153
- Route 57 Truncated Segment
- Existing Route 57
- Route 53 Truncated Segment
- Existing Route 53



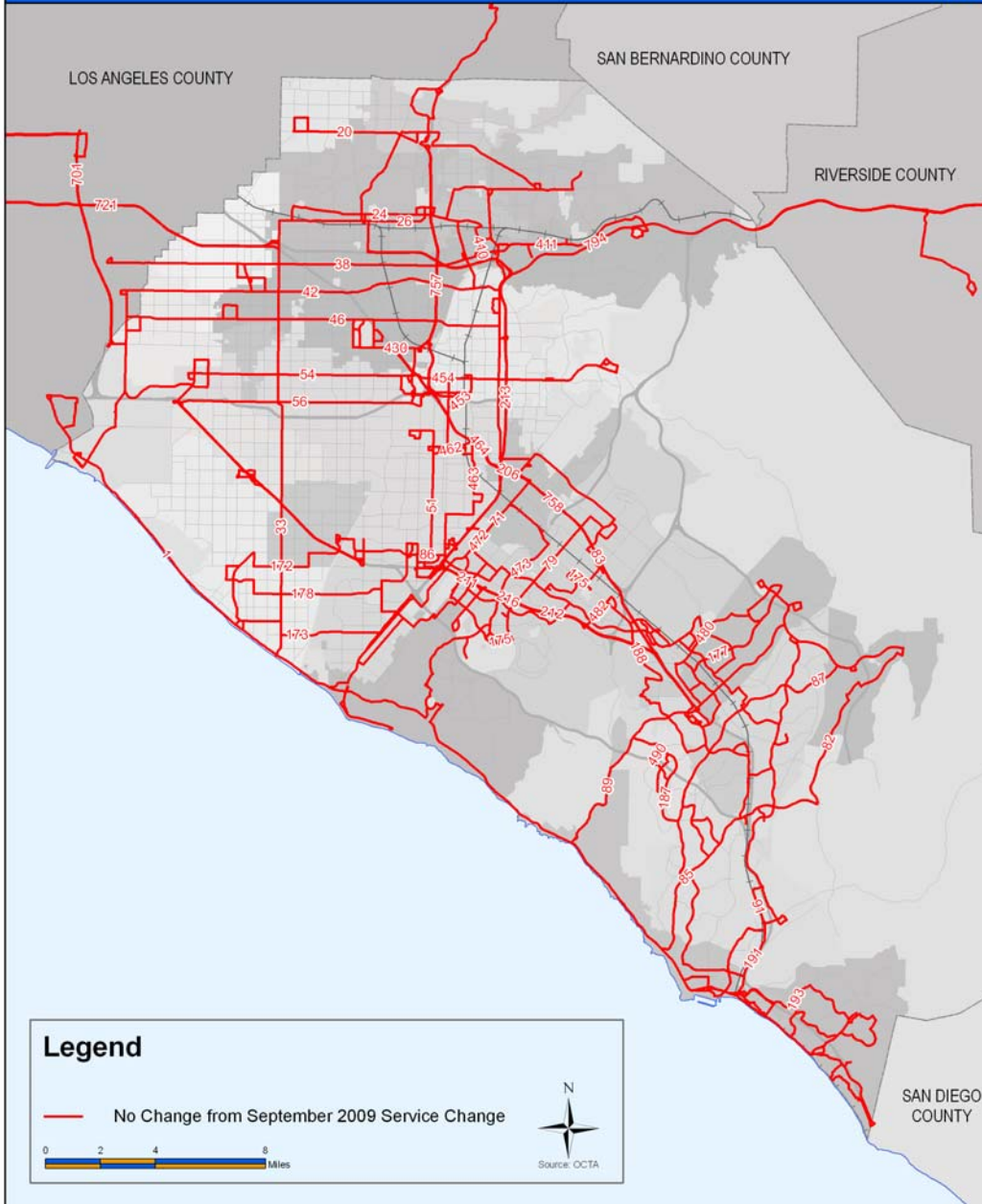
- Shorten routes 53 and 57:
 - 53 at Main St. & Struck Ave.
 - 57 at Orangethorpe Ave & Placentia Ave.
- New route 153 fills gap

Proposed Route 90

Tustin Metrolink Station to Dana Point



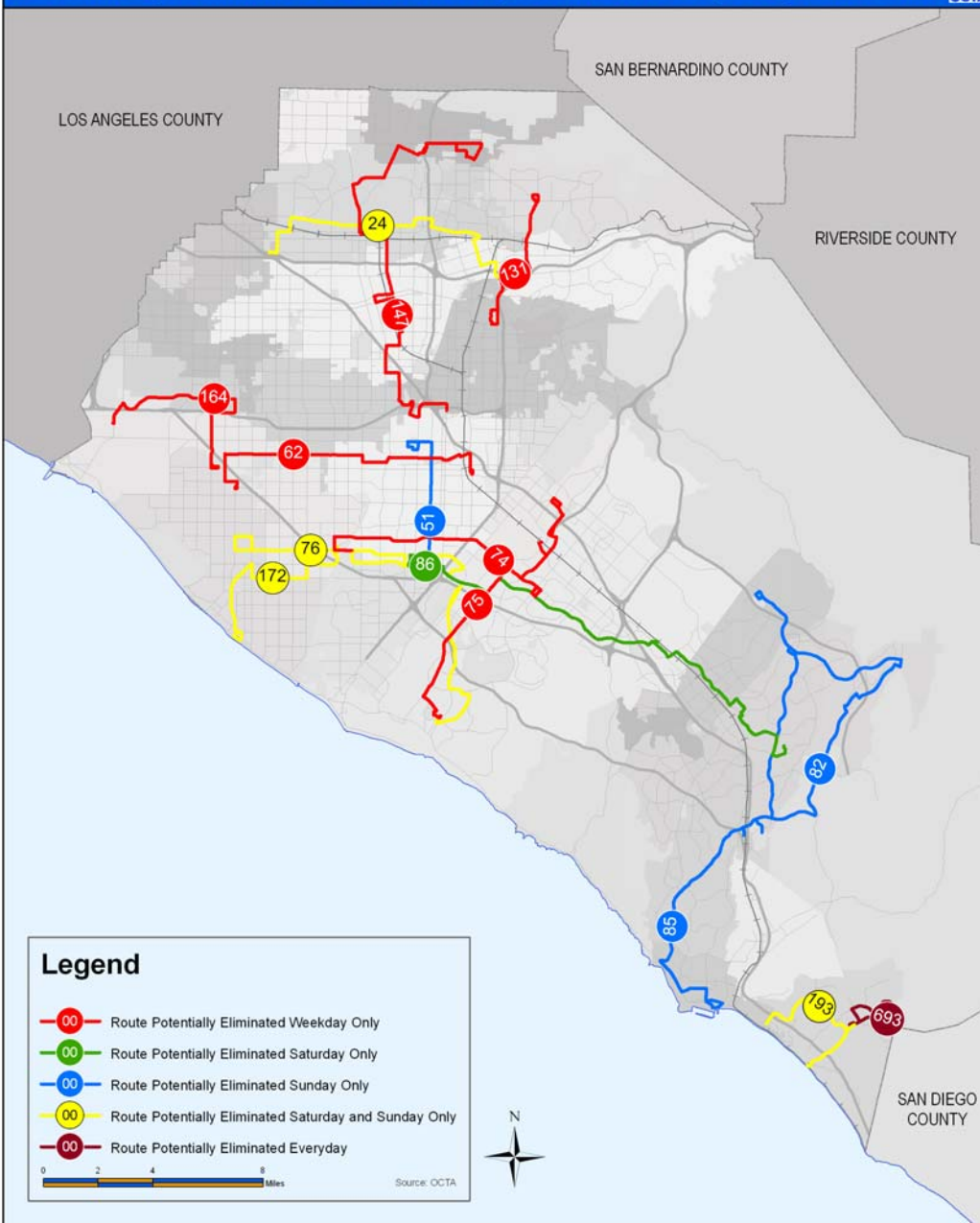
- Divide route 70 into two segments to meet at Tustin Metrolink Station
- South segment replaced by new route 90



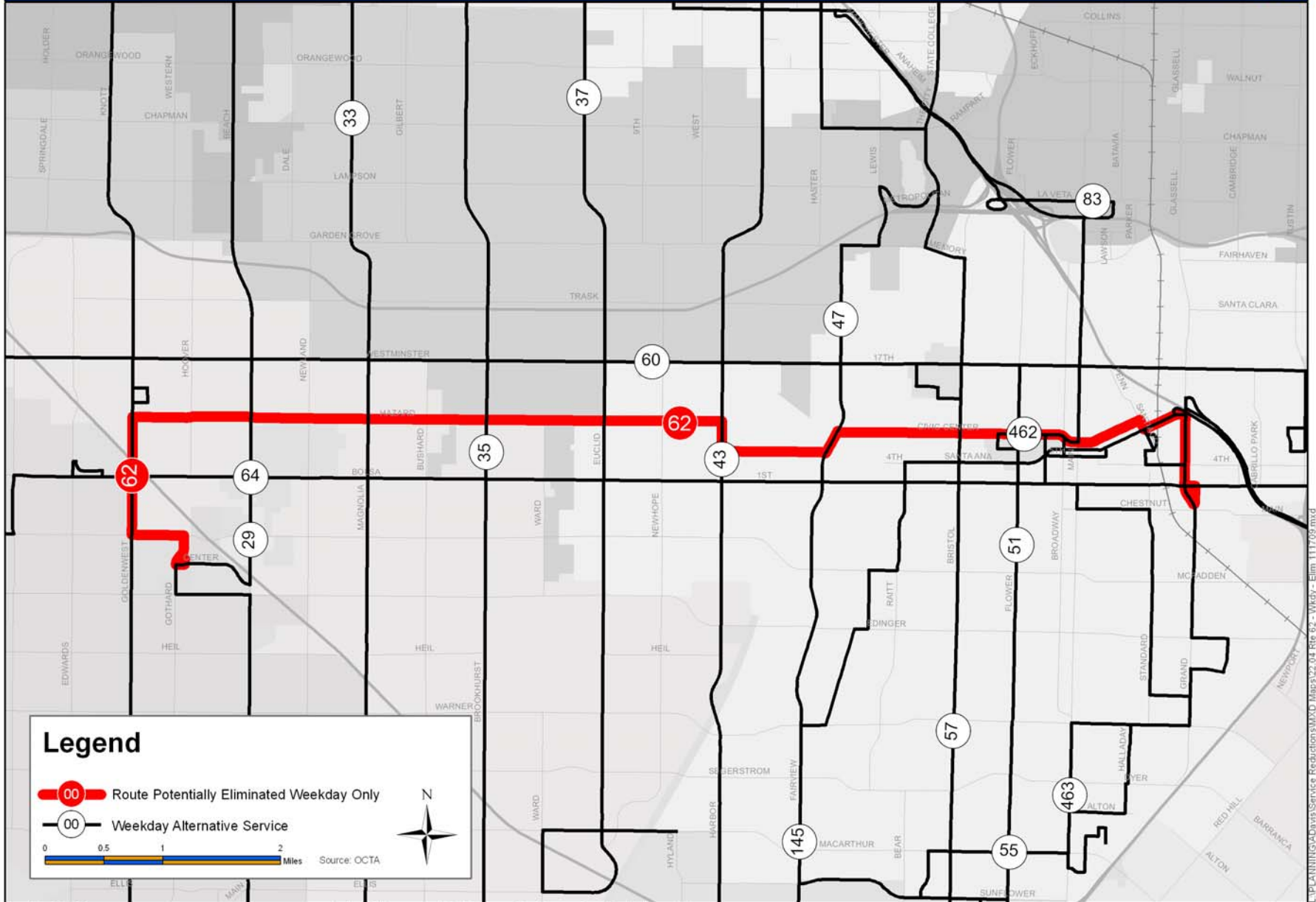




Potentially Eliminated Routes System-Wide by Day of Week



Potentially Eliminated Route and Alternative Nearby Service



November 17, 2009

Portions of this map copyrighted by Thomas Bros Maps and reproduced with permission.

ROUTE 62 – Huntington Beach to Santa Ana

Potentially Eliminated Route and Alternative Nearby Service

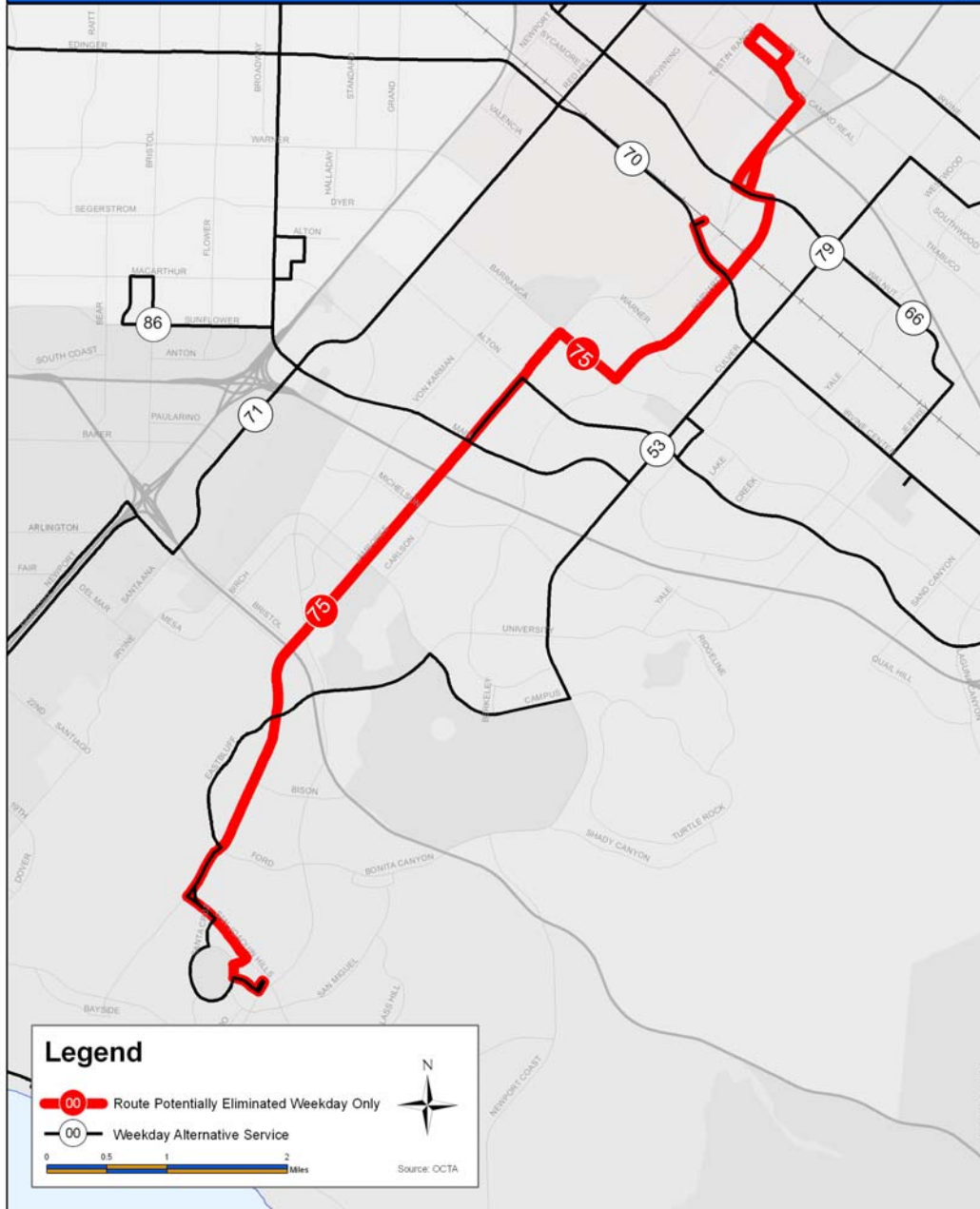


November 17, 2009

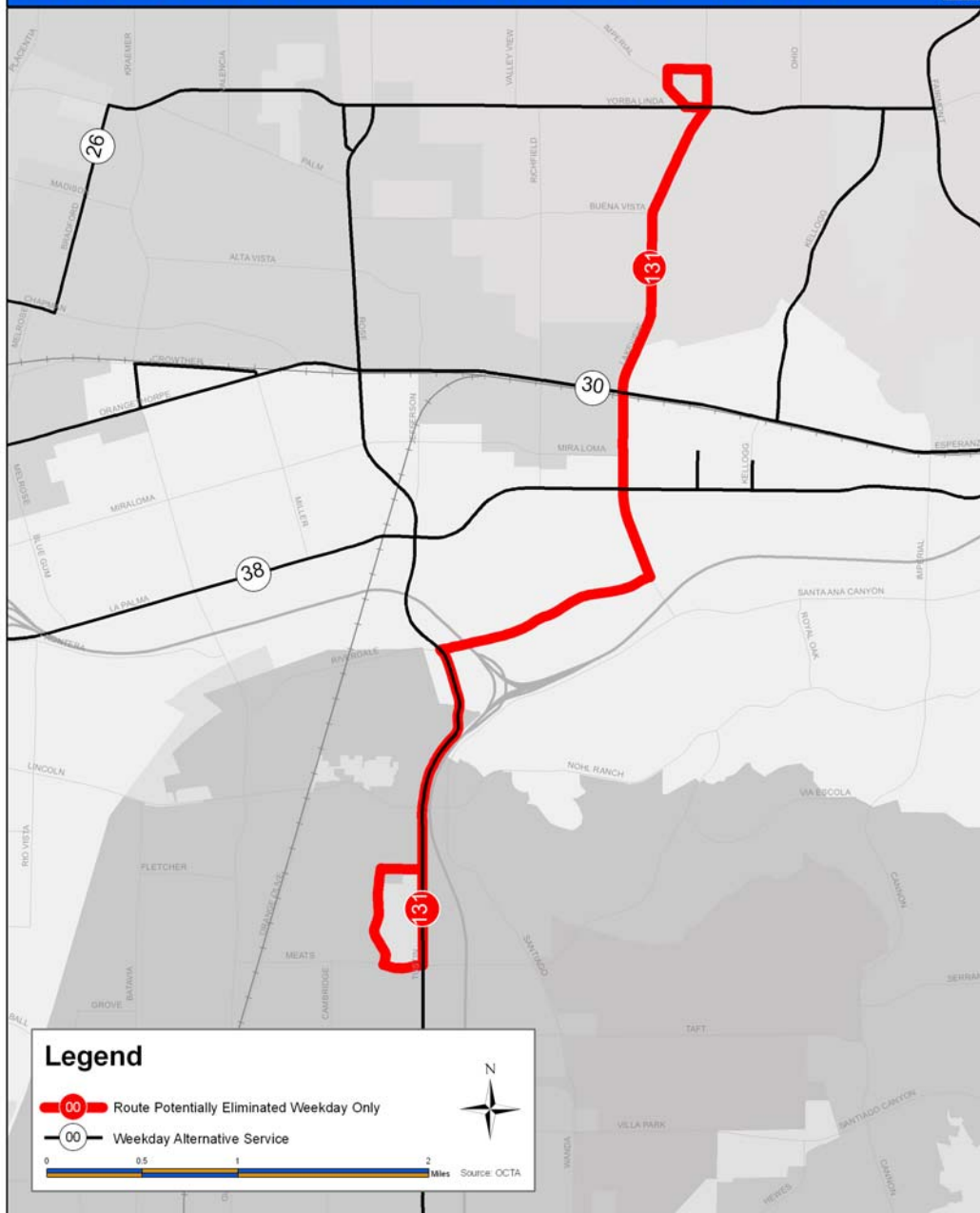
Portions of this map copyrighted by Thomas Bros Maps and reproduced with permission.

ROUTE 74 – Fountain Valley to Irvine

L:\PLANNING\GIS\Service Reductions\MXD Maps\22.05 Rte 74 - Wkdy - Elim 111709.mxd

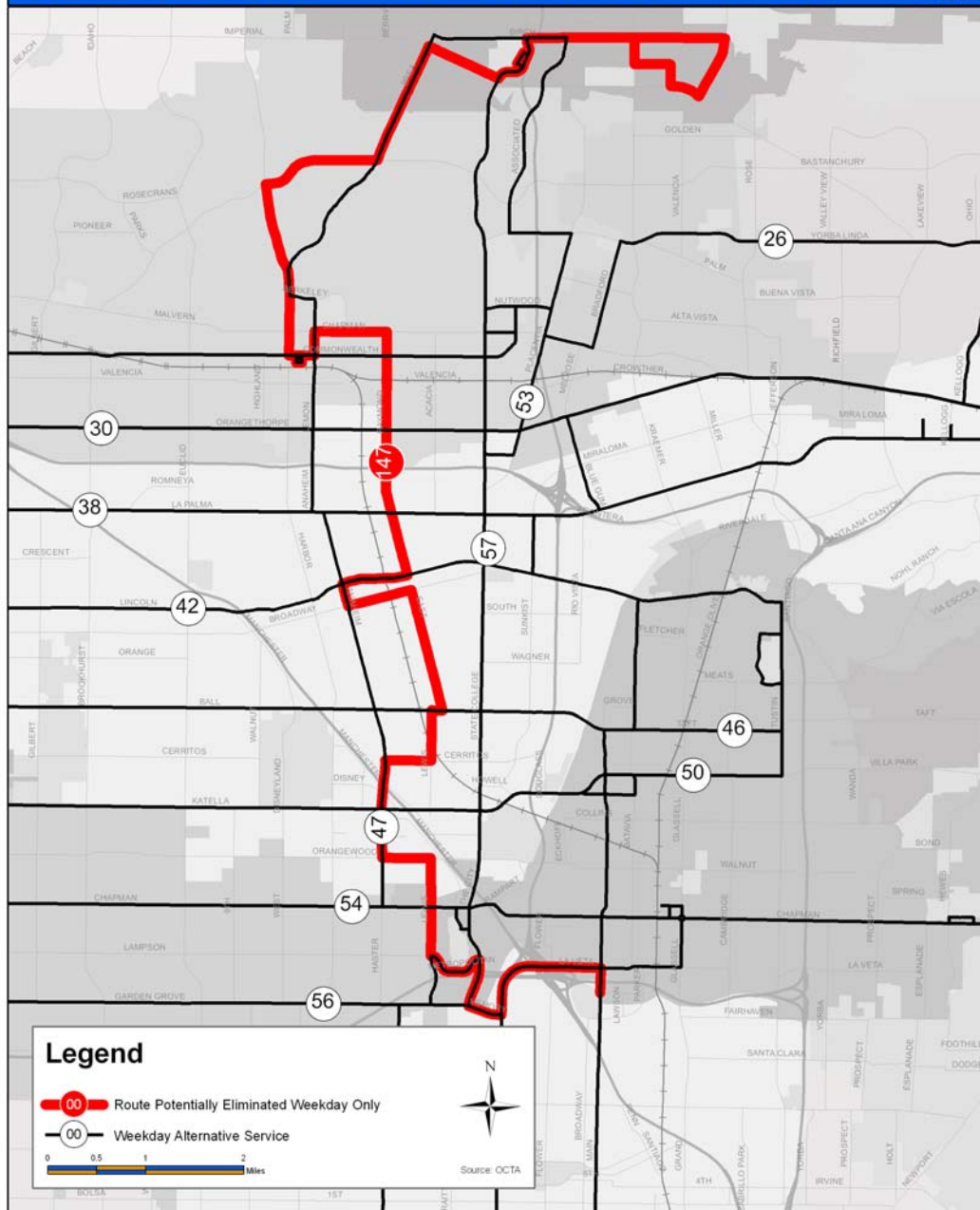


ROUTE 75 – Tustin to Newport Beach



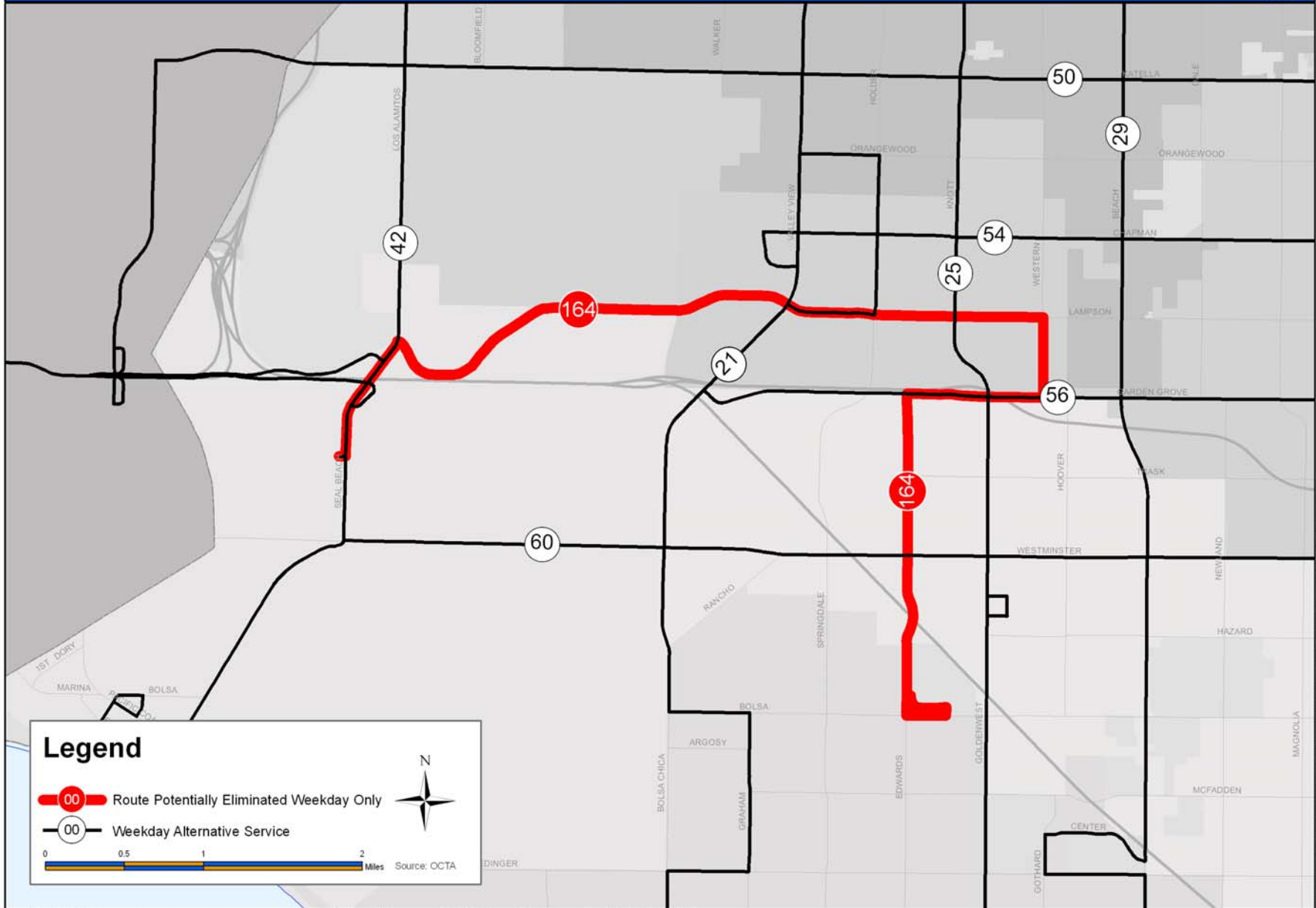
ROUTE 131 – Yorba Linda to Orange

Potentially Eliminated Route and Alternative Nearby Service



ROUTE 147 – Brea to Santa Ana

Potentially Eliminated Route and Alternative Nearby Service



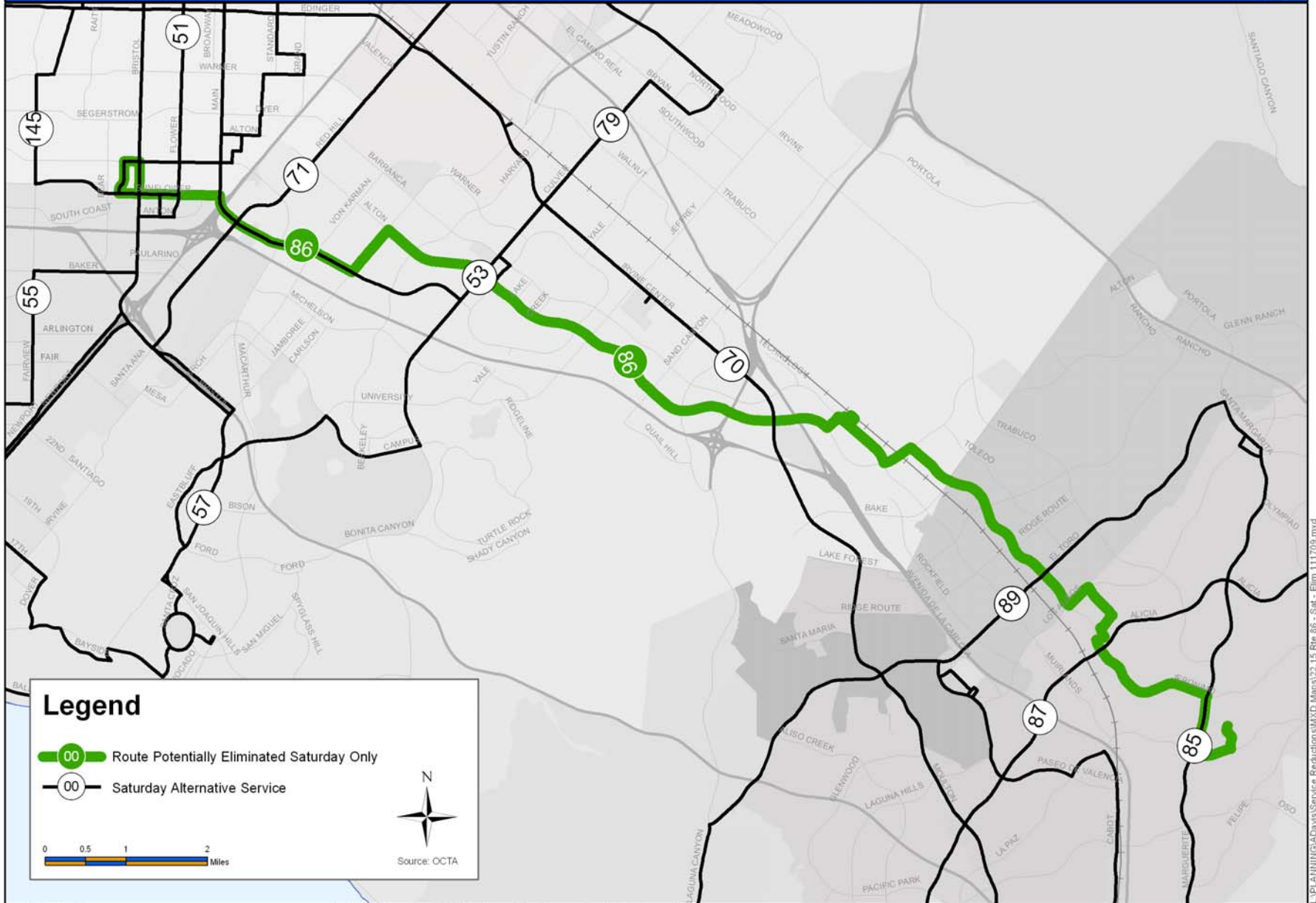
November 17, 2009

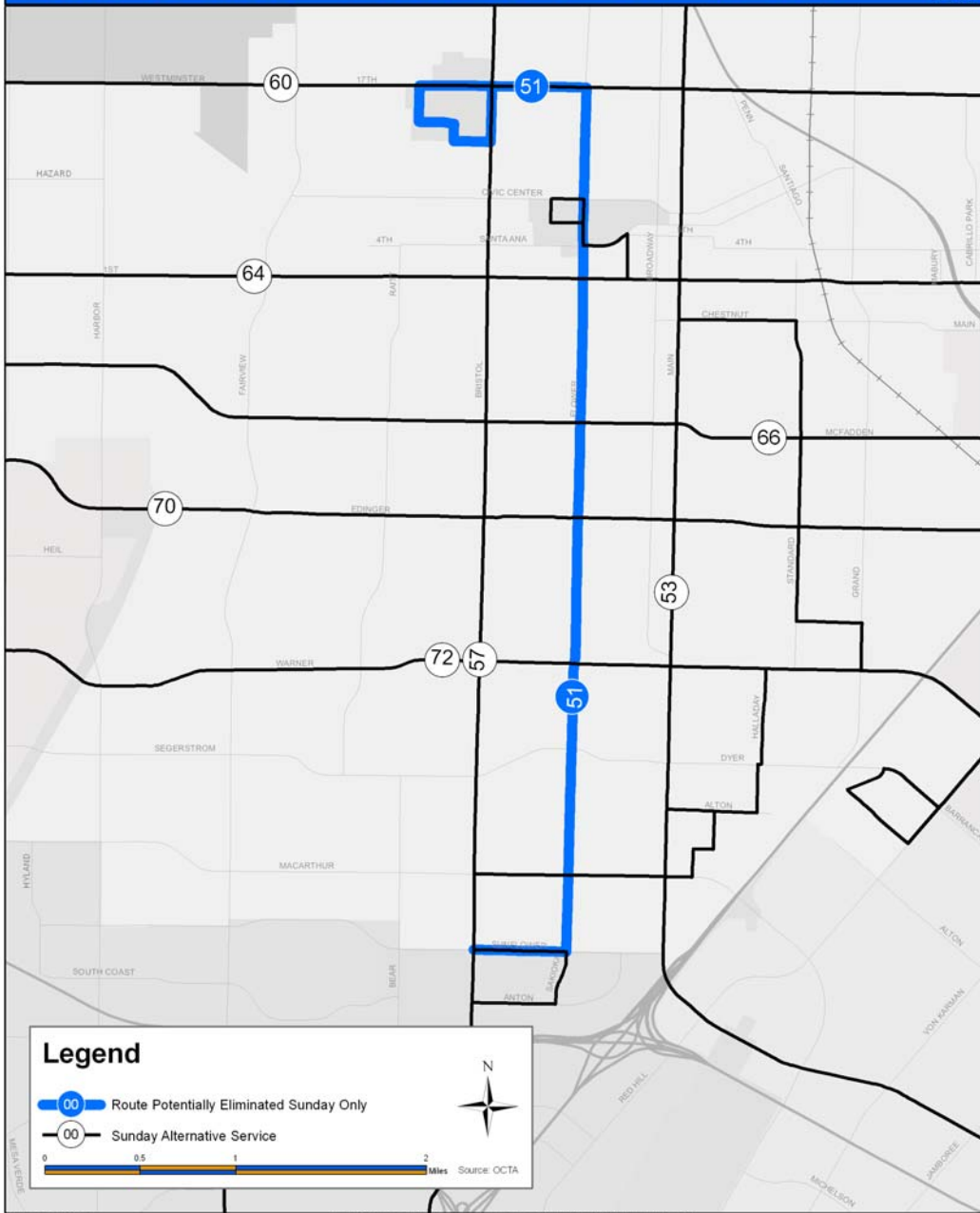
Portions of this map copyrighted by Thomas Bros Maps and reproduced with permission.

ROUTE 164 – Seal Beach to Westminster

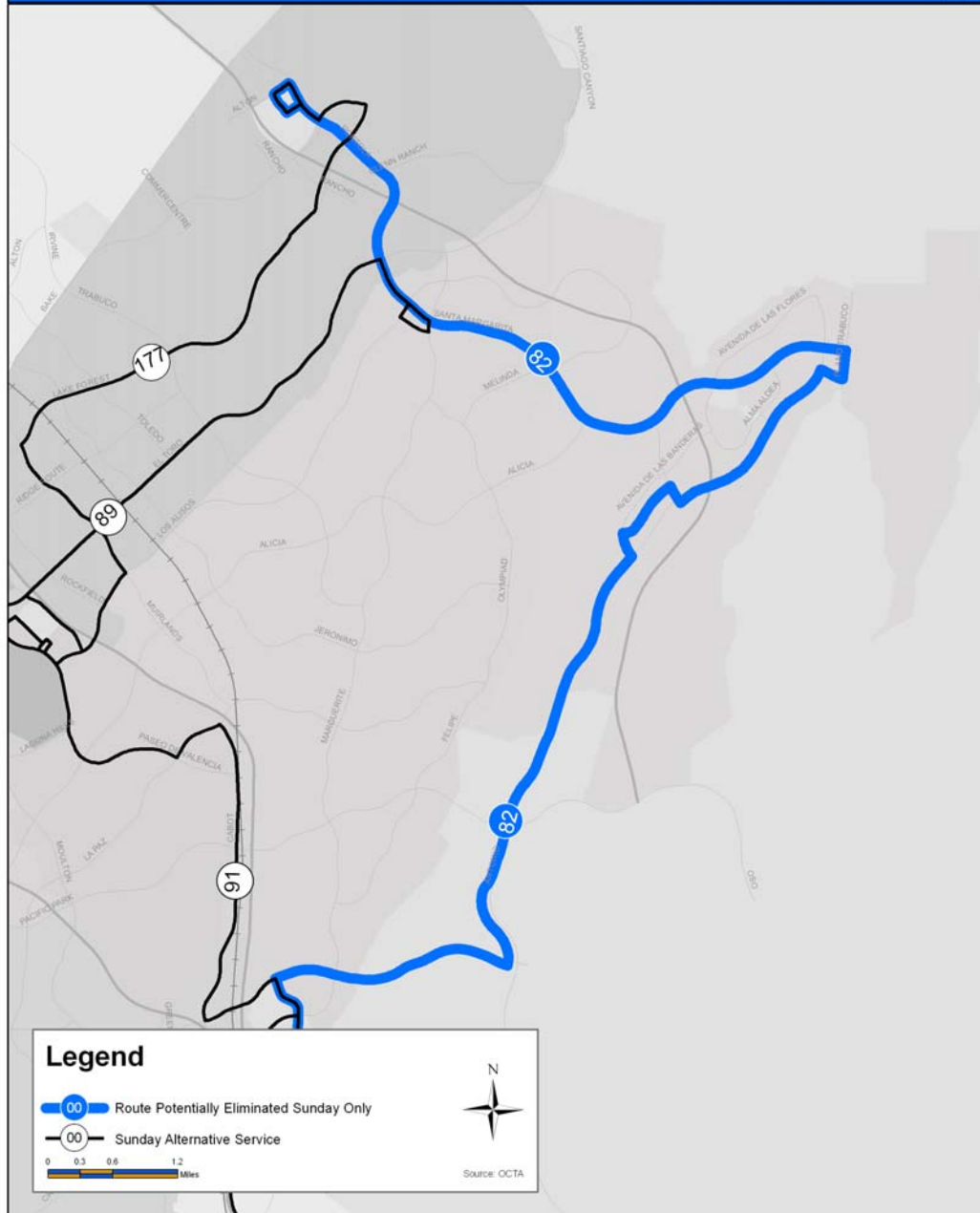
L:\PLANNING\Davis\Service Reductions\MXD Maps\22.09 Rte 164 - Wkdy - Elim 111709.mxd

Potentially Eliminated Route and Alternative Nearby Service





**ROUTE 51 –
Santa Ana to Costa Mesa**

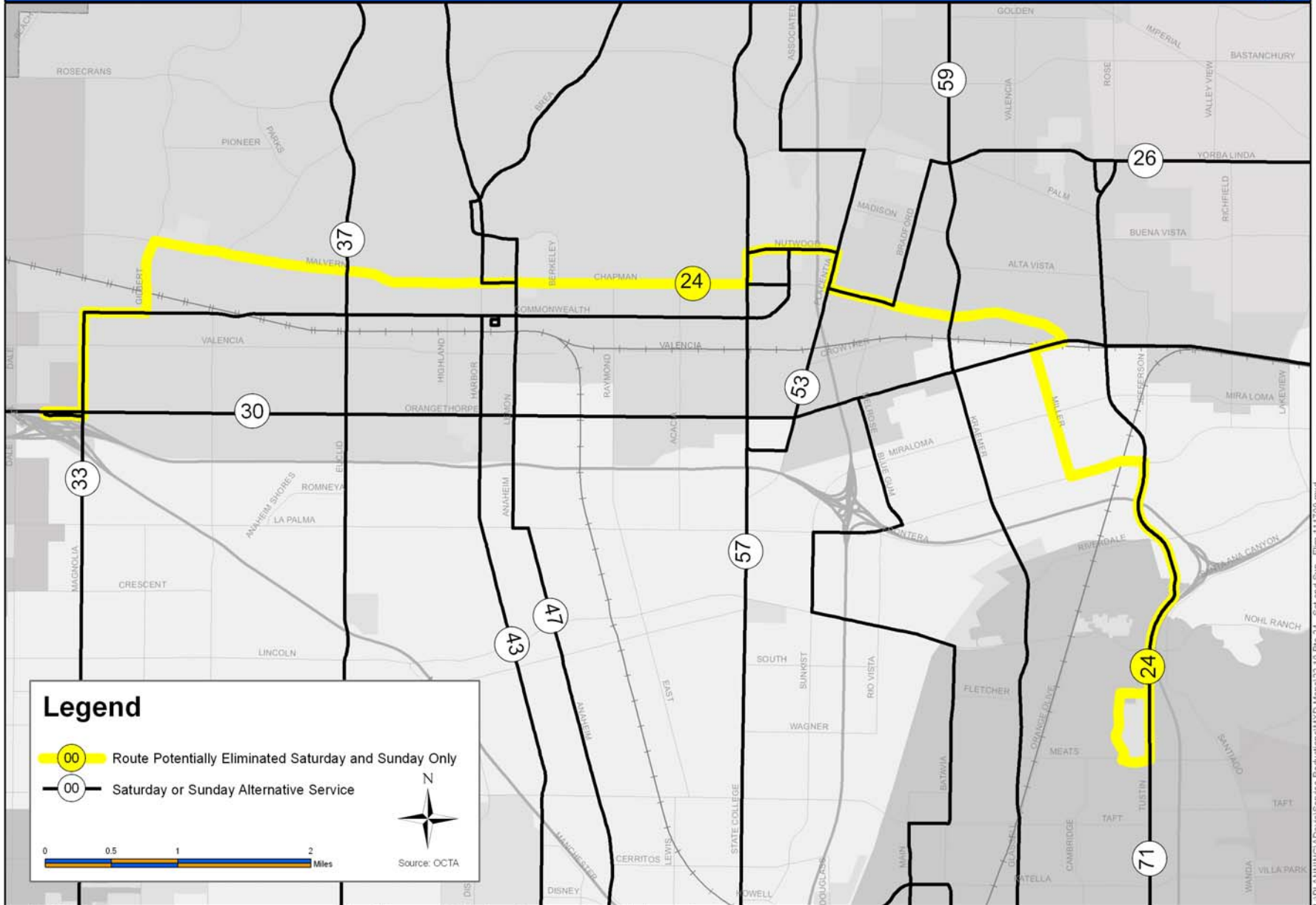


ROUTE 82 – Foothill Ranch to Laguna Niguel



ROUTE 85 – Mission Viejo to Dana Point

Potentially Eliminated Route and Alternative Nearby Service



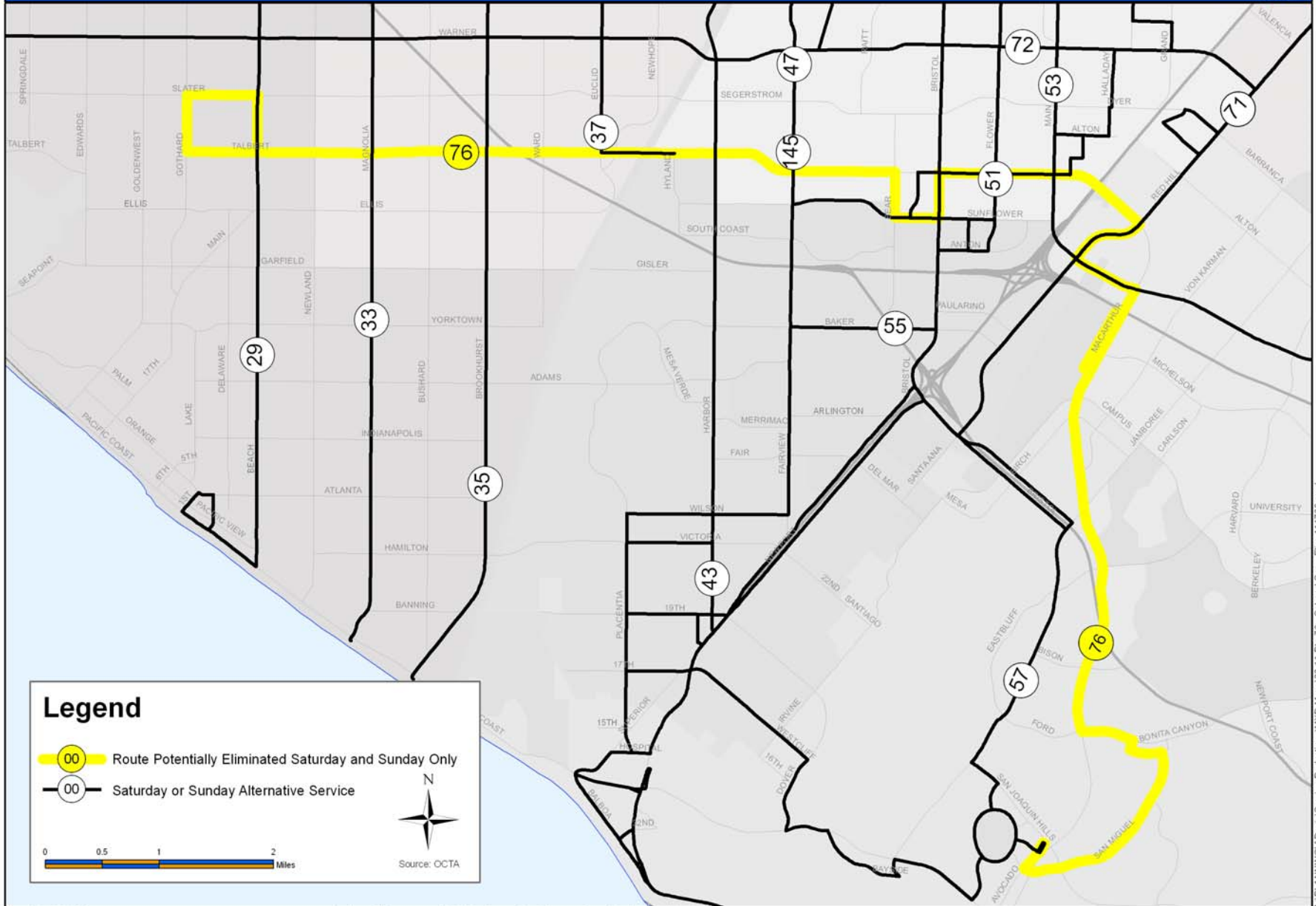
November 17, 2009

Portions of this map copyrighted by Thomas Bros Maps and reproduced with permission.

ROUTE 24 – Fullerton to Orange

L:\PLANNING\Davis\Service Reductions\MXD Maps\2.10 Rte 24 - Sat and Sun - Elim 111709.mxd

Potentially Eliminated Route and Alternative Nearby Service



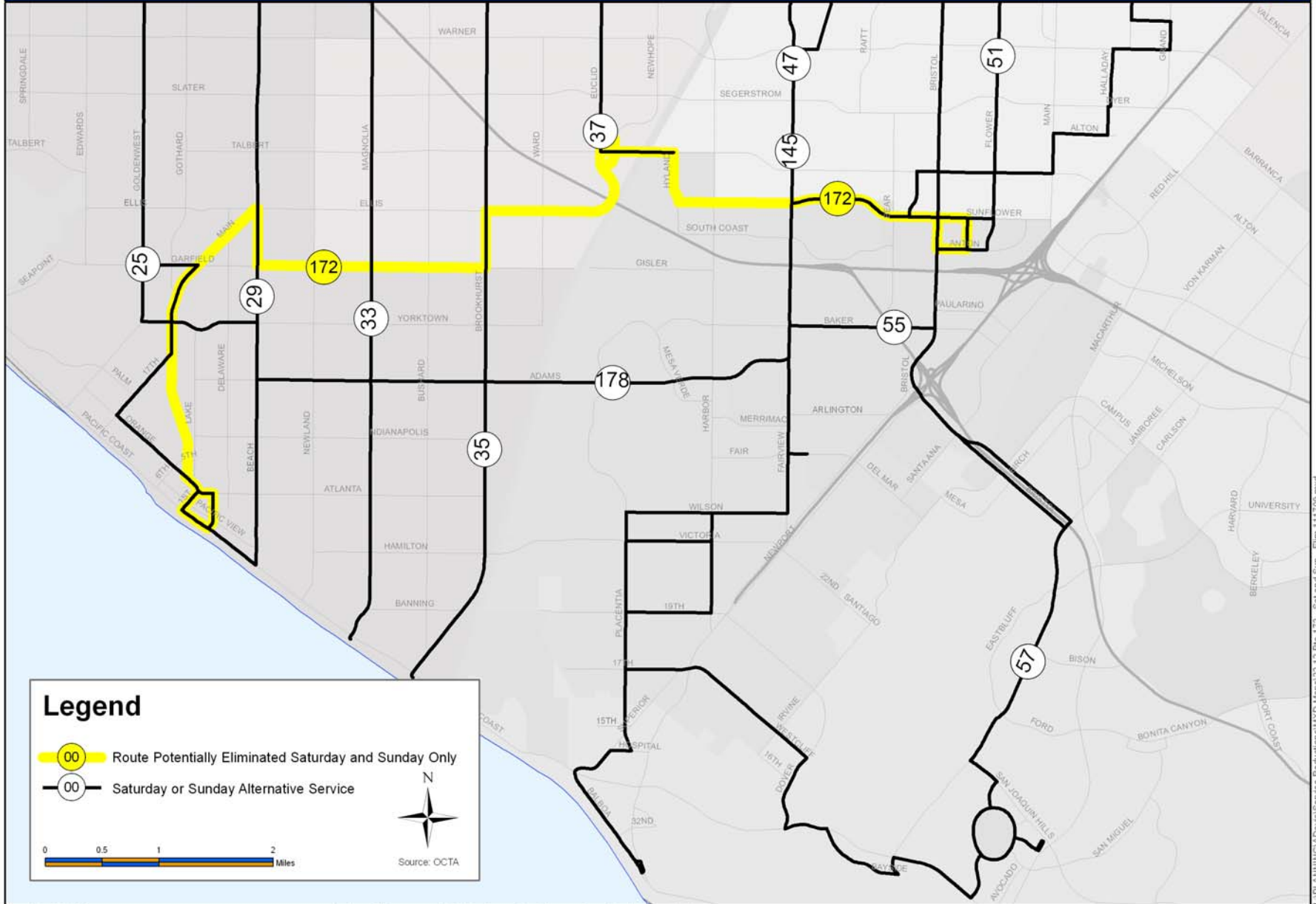
November 17, 2009

Portions of this map copyrighted by Thomas Bros Maps and reproduced with permission.

ROUTE 76 – Huntington Beach to Newport Beach

L:\PLANNING\Davis\Service Reductions\Mapa22.11.Rte.76 - Sat and Sun - Elim 111709.mxd

Potentially Eliminated Route and Alternative Nearby Service



November 17, 2009

Portions of this map copyrighted by Thomas Bros Maps and reproduced with permission.

ROUTE 172 – Huntington Beach to Costa Mesa

L:\PLANNING\Davis\Service Reductions\MXD Maps\22_12_Rte 172 - Sat and Sun - Elim 111709.mxd

Potentially Eliminated Route and Alternative Nearby Service



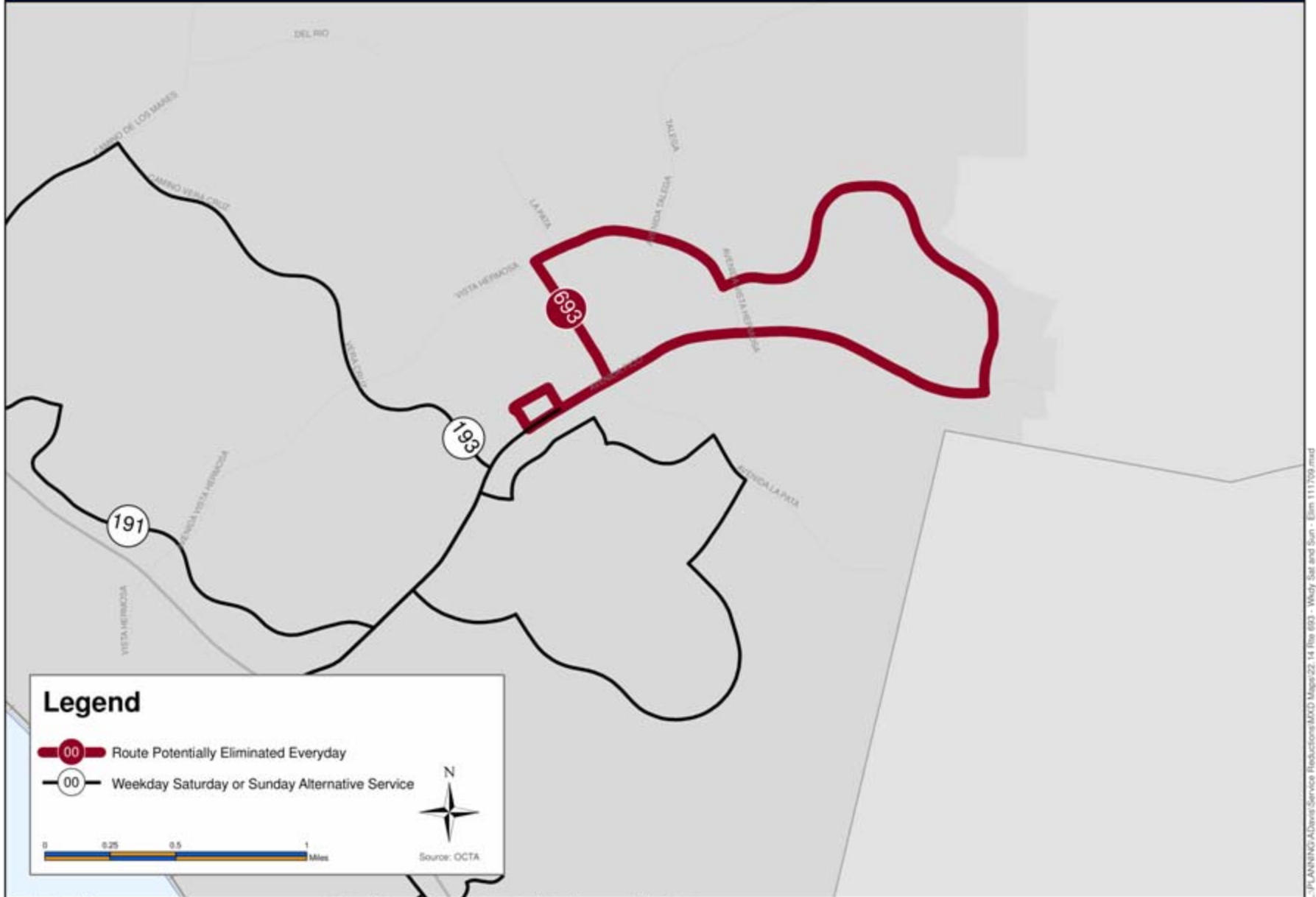
November 17, 2009

Portions of this map copyrighted by Thomas Bros Maps and reproduced with permission.

ROUTE 193 – San Clemente via Camino de los mares

L:\PLANNING\GIS\Service Reductions\MapA22.13 Rte 193 - Sat and Sun - Elim 111709.mxd

Potentially Eliminated Route and Alternative Nearby Service



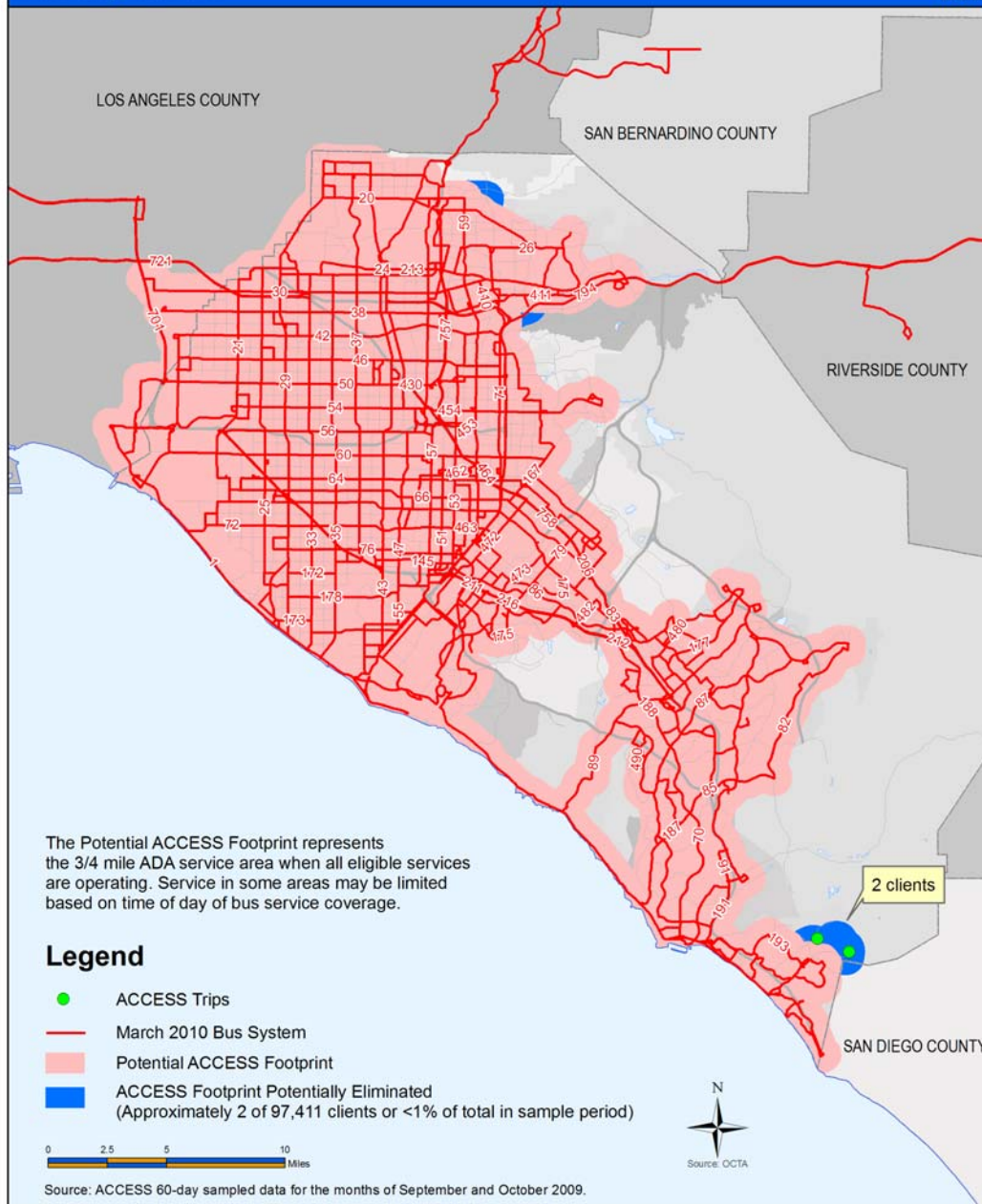
November 17, 2009

Portions of this map copyrighted by Thomas Bros Maps and reproduced with permission.

ROUTE 693 – San Clemente via Avenida Pico

L:\PLANNING\ADavis\Service Reductions\MXD Maps\22_14_Rte_693 - Wdy Sat and Sun - Elm 111709.mxd

Potential ACCESS Footprint With 60-Day Sample of Client Trips
Weekday Network

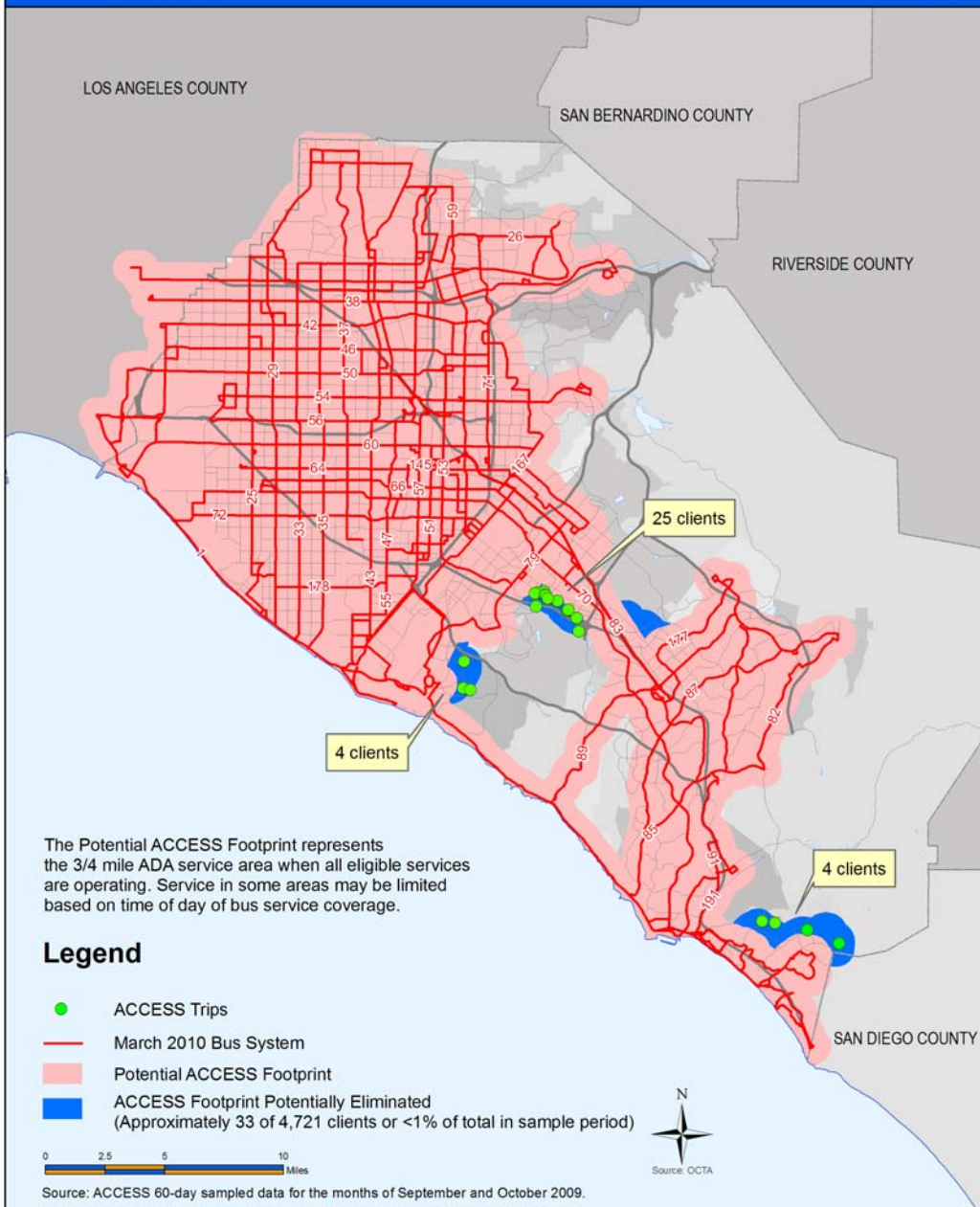


November 18, 2009

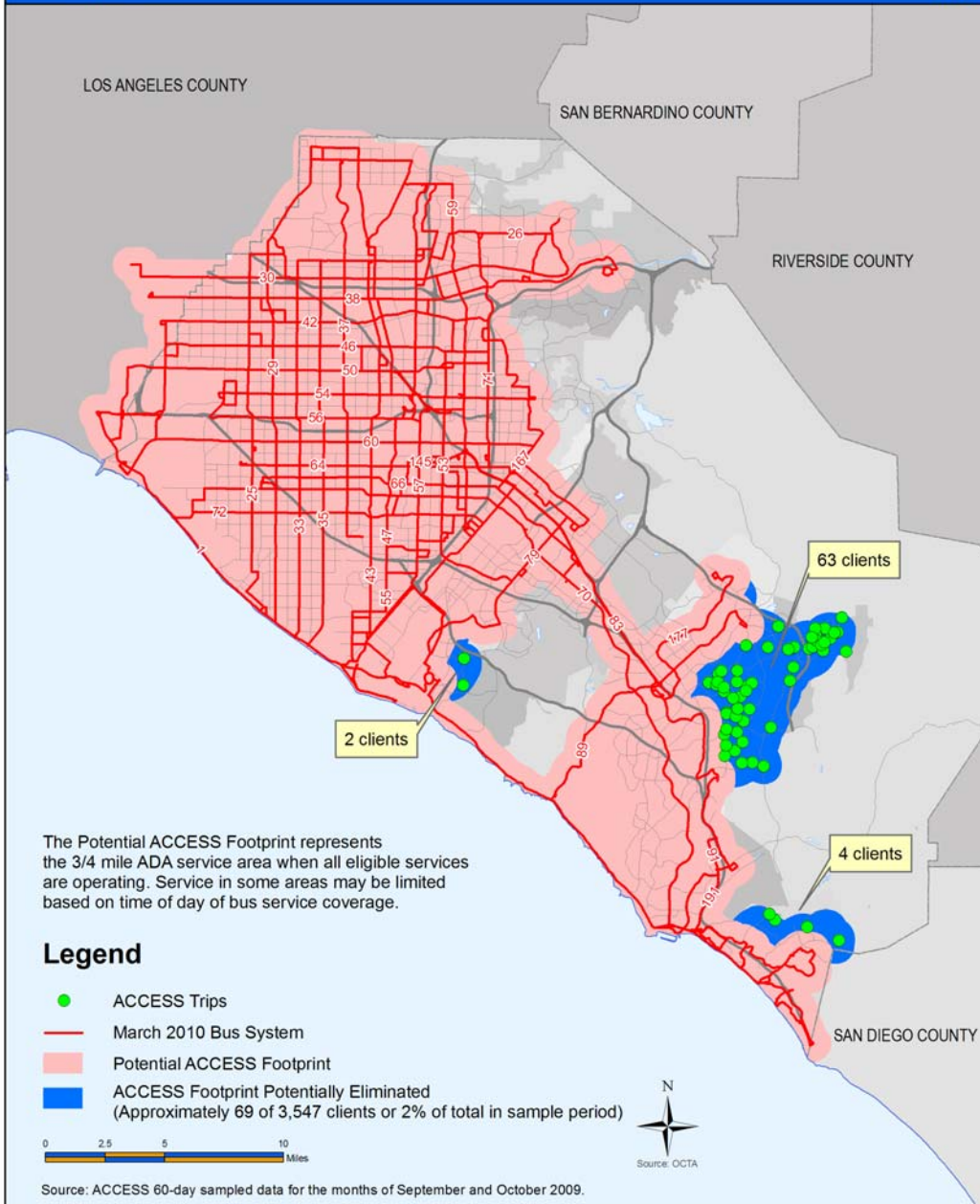
Portions of this map copyrighted by Thomas Bros Maps and reproduced with permission.

L:\PLANNING\Advise\Service Reductions\AKD Maps\21_01_San Diego - Weekday - ACCESS Footprint 111709 no details.mxd

Potential ACCESS Footprint With 60-Day Sample of Client Trips
Saturday Network



Potential ACCESS Footprint With 60-Day Sample of Client Trips
Sunday Network



Summary

| Reduction Techniques | Weekday | Sat | Sun |
|-----------------------|--|--|---|
| Night Owl Elimination | Maintain trips until 1 am on 43, 50, 57, 60 | Same as weekday | Same as weekday |
| Route Elimination | 62, 74, 75, 131, 147, 164, 693 | 24, 76, 86, 172, 193, 693 | 24, 51, 76, 82, 85, 172, 193, 693 |
| Frequency Reductions | 24, 25, 30, 35, 37, 50, 55, 64, 66, 72, 76, 145 * 1, 33, 38, 42, 46, 51, 53, 54, 59, 60, 70, 71, 79, 82, 83, 85, 89, 91 | 50, 55, 66, 89 * 1, 26, 29, 35, 37, 38, 42, 43, 46, 53, 54, 60, 64, 70, 71, 83, 91, 145 | 50, 55, 66, 89 * 1, 26, 29, 38, 42, 43, 46, 53, 54, 60, 64, 70, 71, 83, 91 |
| Route Restructuring | 29, 43, 47, 53, 57, 59, 70 New - 90, 129, 143, 153 | Same as weekday | Same as weekday |
| Trip Reduction | 21 * 26, 172 | n/a | n/a |

* Additional impacts under 300,000 RVH reduction

Recommendations

- Approve March 2010 150,000 RVH reduction
- Approve 2nd 150,000 RVH reduction but suspend implementation pending Board direction
- Monitor revenues
- Develop transit study scope of work