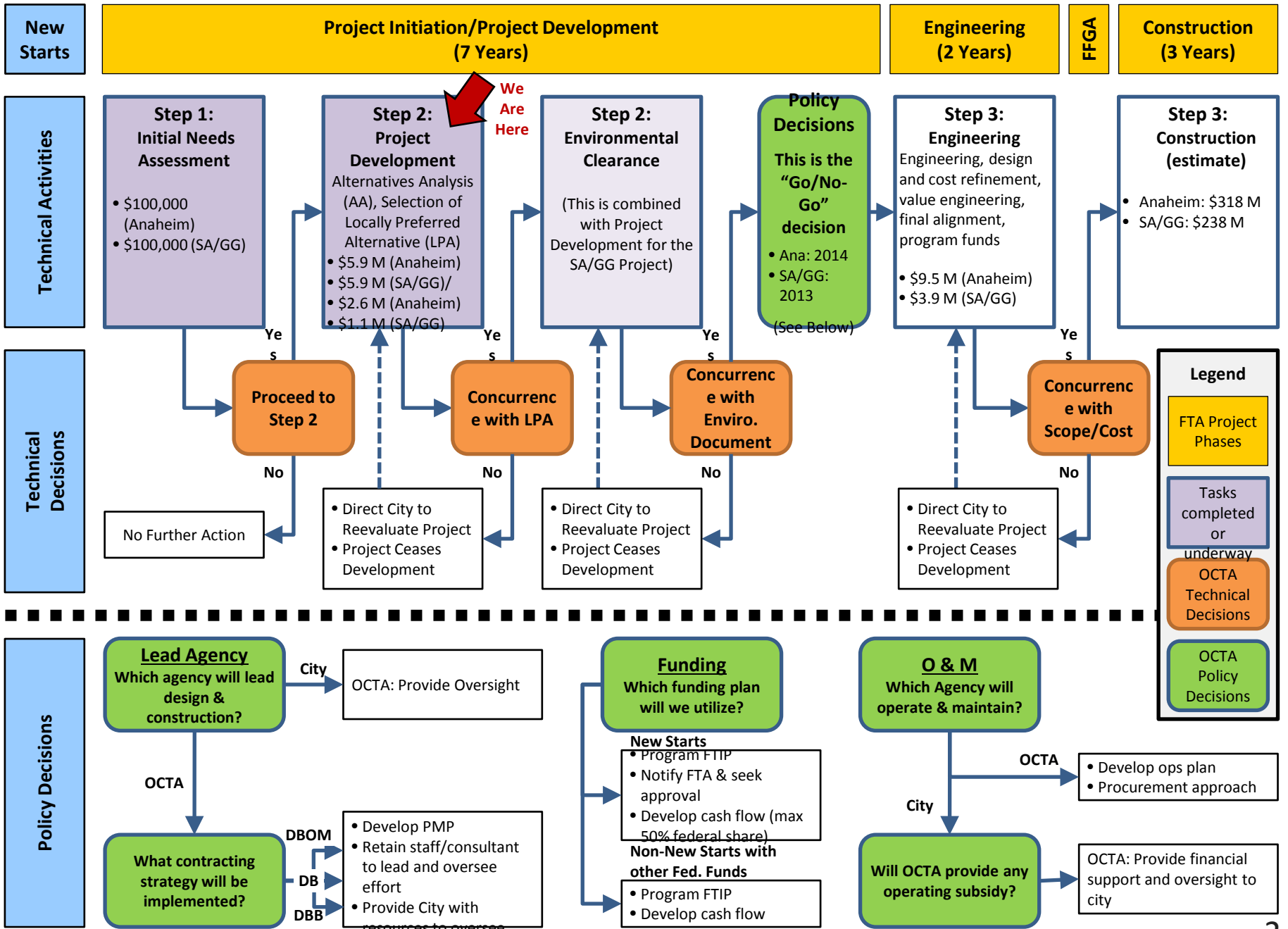


# Anaheim Rapid Connection Locally Preferred Alternative Concurrence



# Go Local Fixed-Guideway Program: Decision Flow Diagram



# Anaheim Rapid Connection (ARC) Cost per Mile Comparison

City / Project	Actual / Proposed Opening Date	Length (Track Miles)	Capital Cost (x1000) in 2011 \$	Cost per Track Mile (x1000)	Status
Anaheim	2018	6.84	\$ 278,689	\$ 40,744	Planned
Cincinnati	2015	3.90	\$ 127,851	\$ 32,782	About to start Construction
Los Angeles	2016	3.59	\$ 106,762	\$ 29,739	Planned
Tampa	2002	3.50	\$ 90,180	\$ 25,766	In Service
Santa Ana	2017	8.30	\$ 210,775	\$ 25,395	Planned
Atlanta	2013/2014	2.70	\$ 68,401	\$ 25,334	Under Construction
Tucson	2015	7.80	\$ 196,599	\$ 25,205	Under Construction
Portland	2012	6.60	\$ 148,300	\$ 22,470	In Service
Seattle	2007	2.60	\$ 54,600	\$ 21,000	In Service

# ARC Capital Cost

Standard Cost Category	Base Year Cost (No Contingency) (x1000)	Base Year Contingency (x1000)	Escalation (x1000)	Year of Expenditure (YOE) Cost (x1000)	YOE Line Item % of Total	Description of Costs in Category
10. Guideway	\$ 32,105	\$ 6,421	\$ 6,185	\$ 44,711	14.0%	Track and supporting structures
20. Stations	\$ 15,009	\$ 3,002	\$ 2,771	\$ 20,782	6.5%	Stations and all supporting systems
30. Support Facilities	\$ 15,918	\$ 3,184	\$ 3,154	\$ 22,256	7.0%	Maintenance facility
40. Sitework	\$ 18,529	\$ 3,706	\$ 3,540	\$ 25,775	8.1%	Demolition, utilities, mitigation, roadways, etc
50. Systems	\$ 17,520	\$ 3,504	\$ 3,391	\$ 24,415	7.7%	Train control; fare and power systems
60. Right-of-Way	\$ 23,105	\$ 9,242	\$ 3,816	\$ 36,163	11.3%	Land and relocation costs
70. Vehicles	\$ 35,000	\$ 3,500	\$ 6,368	\$ 44,868	14.1%	Streetcar vehicles
80. Professional Services	\$ 36,950	\$ 3,695	\$ 4,046	\$ 44,691	14.0%	Design, project and construction management
90. Unallocated Contingency	\$ -	\$ 46,078	\$ 6,509	\$ 52,587	16.5%	Unanticipated costs
100. Finance Charges	\$ 2,223	\$ -	\$ 277	\$ 2,500	0.8%	Borrowing costs
<b>Total Project Cost (10-100)</b>	<b>\$ 196,359</b>	<b>\$ 82,332</b>	<b>\$ 40,057</b>	<b>\$ 318,748</b>	<b>100.0%</b>	
<b>Percent of Base Cost</b>	<b>100%</b>	<b>42%</b>	<b>20%</b>	<b>162%</b>		

# Recommendations

- Concur with Streetcar Alternative as the locally preferred alternative (LPA) for the ARC Project
- Direct staff to work with the City of Anaheim (City) to ensure compatibility with the Santa Ana/Garden Grove Fixed-Guideway project
- Direct staff to work with the City to develop cost containment strategies for the LPA