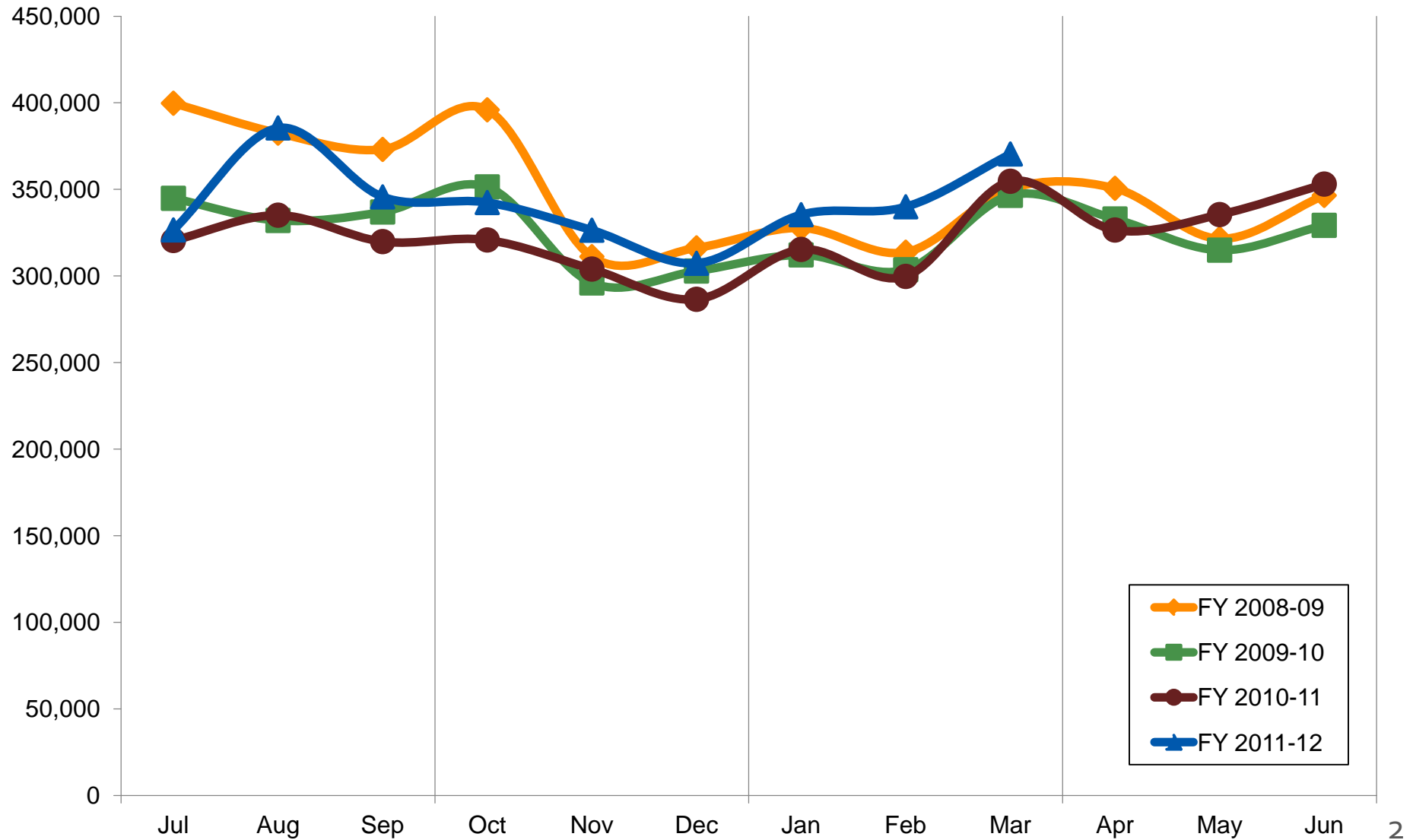
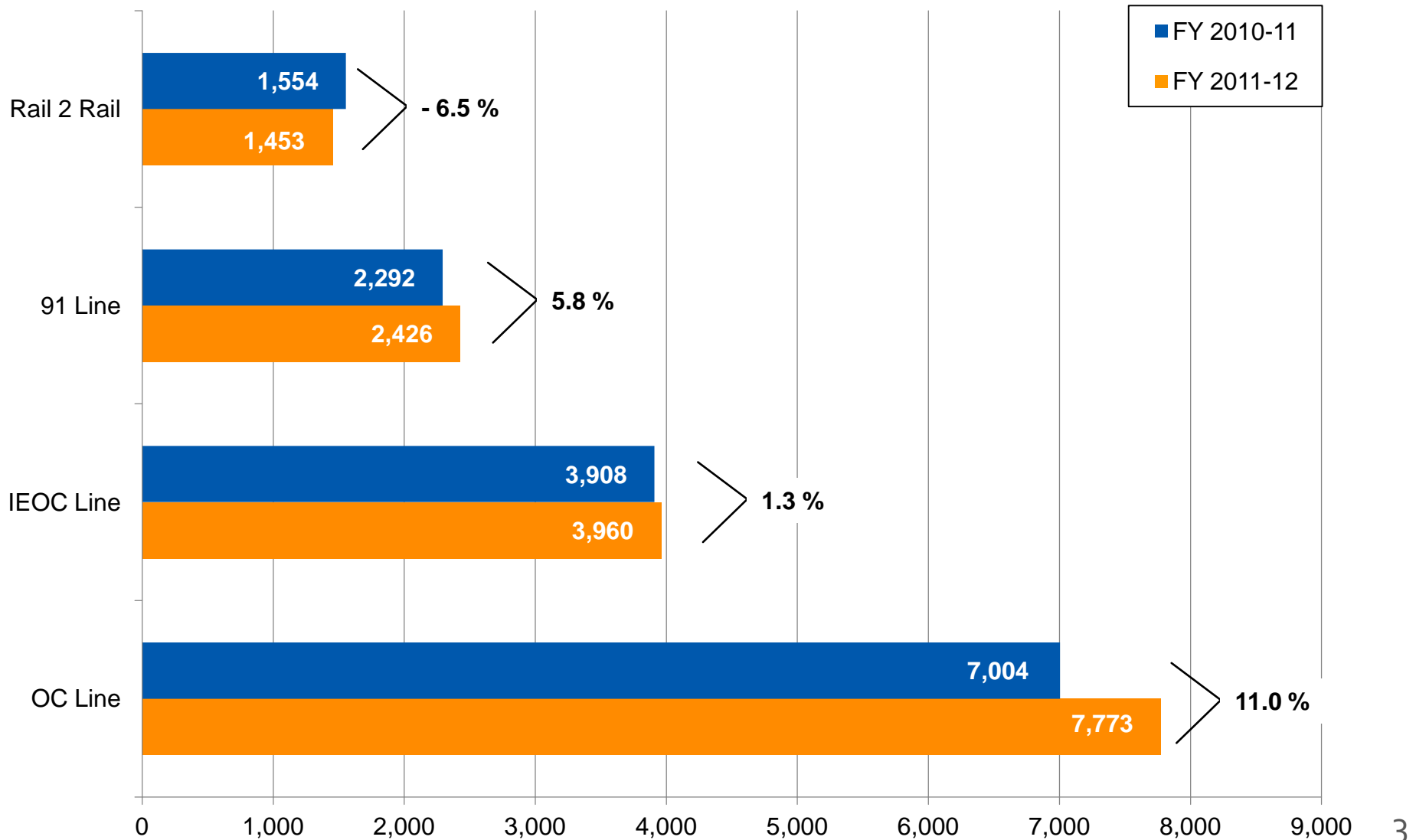


# Metrolink Ridership and Revenue Quarterly Report

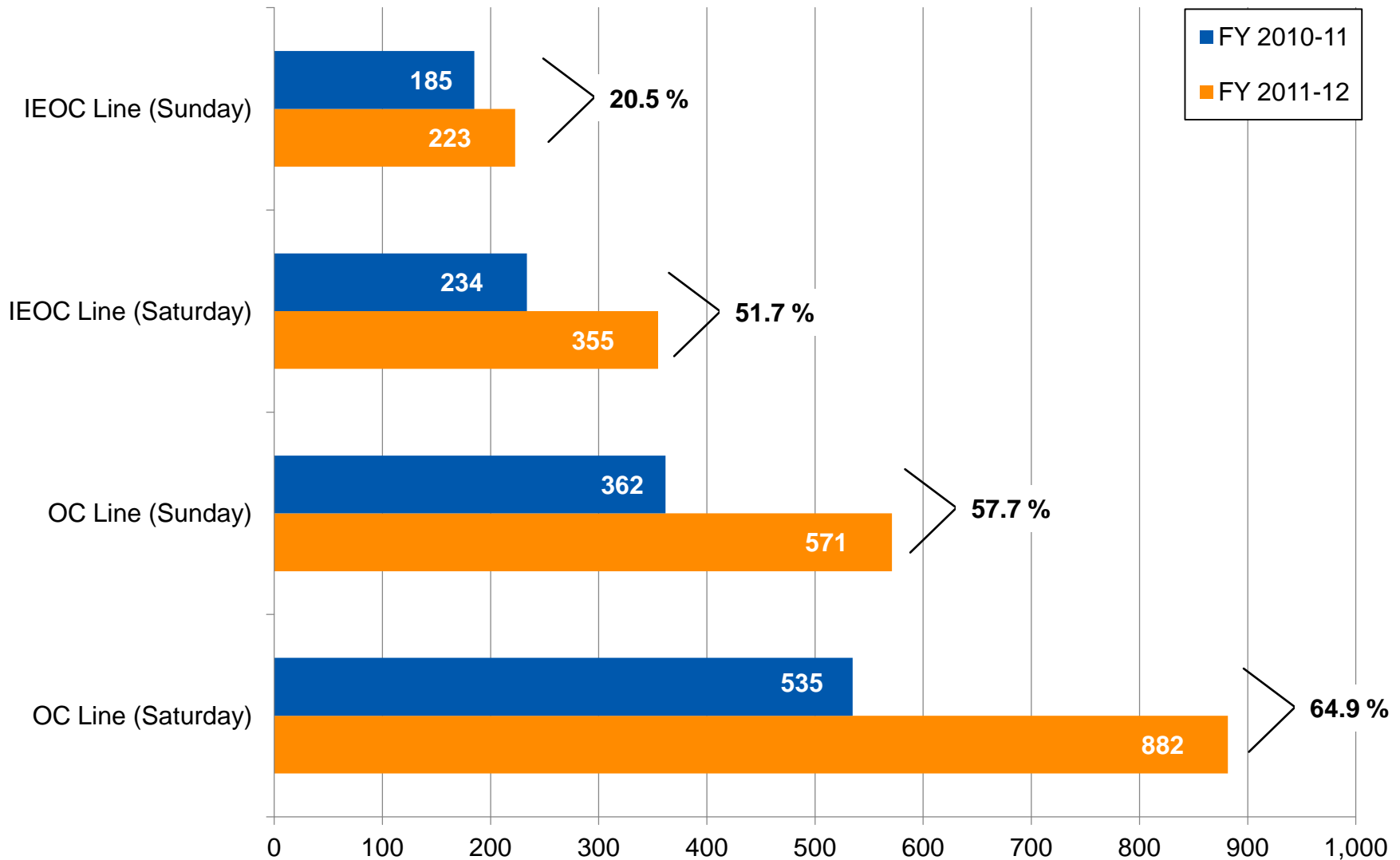
# Total Metrolink Ridership (Weekday and Weekend) OC, IEOC, and 91 Lines



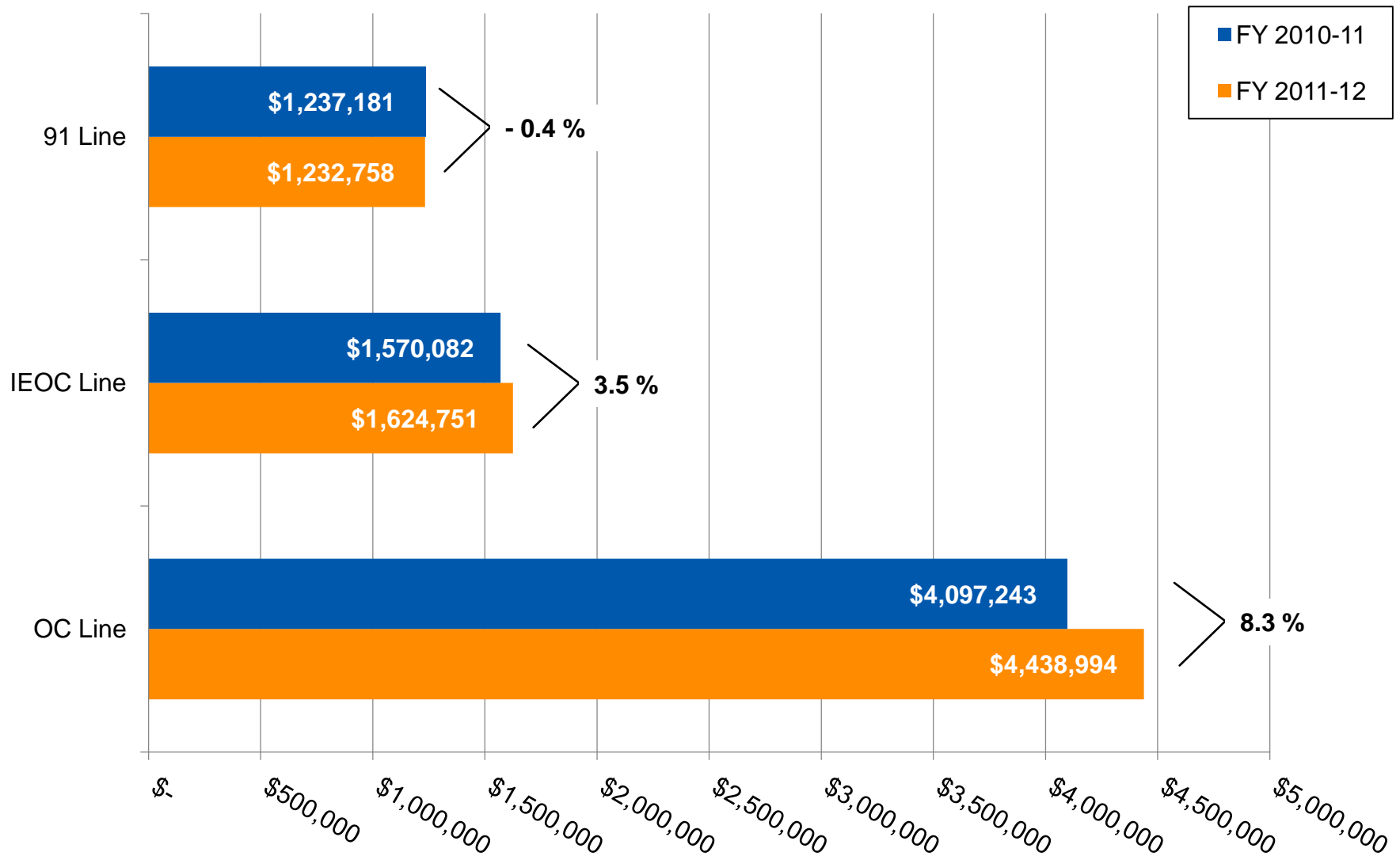
# Average Weekday Ridership – 3<sup>rd</sup> Quarter



# Average Weekend Ridership – 3<sup>rd</sup> Quarter



# Revenue – 3<sup>rd</sup> Quarter



# On-Time Performance – 3<sup>rd</sup> Quarter

- Weekday
    - OC Line 95.8%
    - IEOC Line 94.9%
    - 91 Line 94.6%
    - Average 95.1%

---
  - Systemwide 95.1%
- 
- Weekend
  - OC Line 86.8%
  - IEOC Line 94.4%
  - Average 90.6%

---
- Systemwide 90.6%



# OCTA Metrolink Marketing Events

**RIDE FREE\* ON METROLINK  
TO SEE BIG WHALES**

IN DANA POINT • 50% OFF WHALE WATCHING

**DANA POINT  
FESTIVAL OF  
WHALES**  
MARCH 3-4 & 10-11, 2012



**JOIN US FOR A KICK OFF EVENT  
SATURDAY, MARCH 3, 2012**

**Ride Metrolink Free\* to LA  
for the 113th Golden Dragon Parade**

Saturday, January 28, 2012, 8:00 a.m.  
\*Tickets are limited.



**The Year of the Dragon**

**RIDE METROLINK TO THE  
SWALLOWS' DAY PARADE & MERCADO**



**OCTA METROLINK**