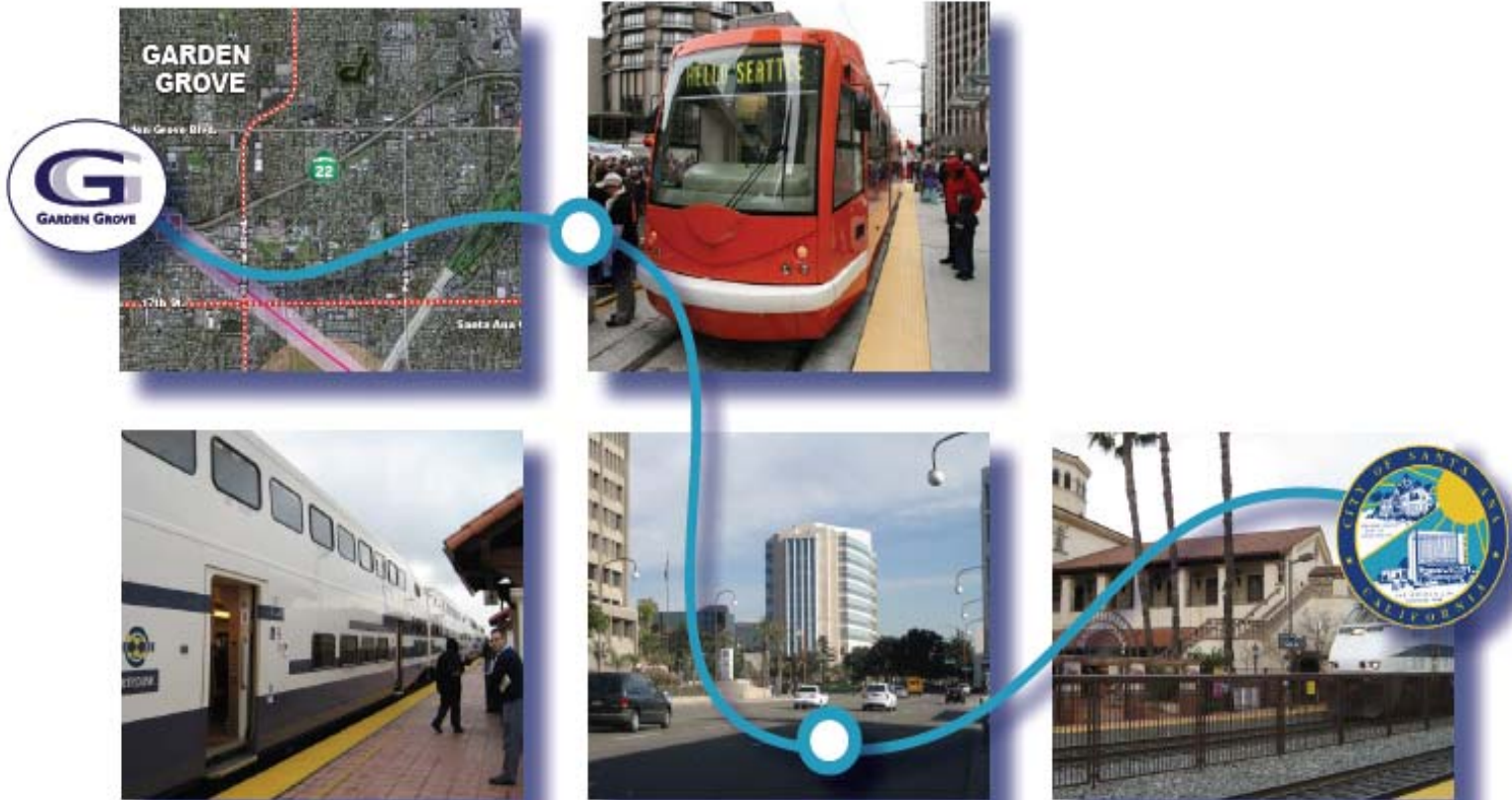
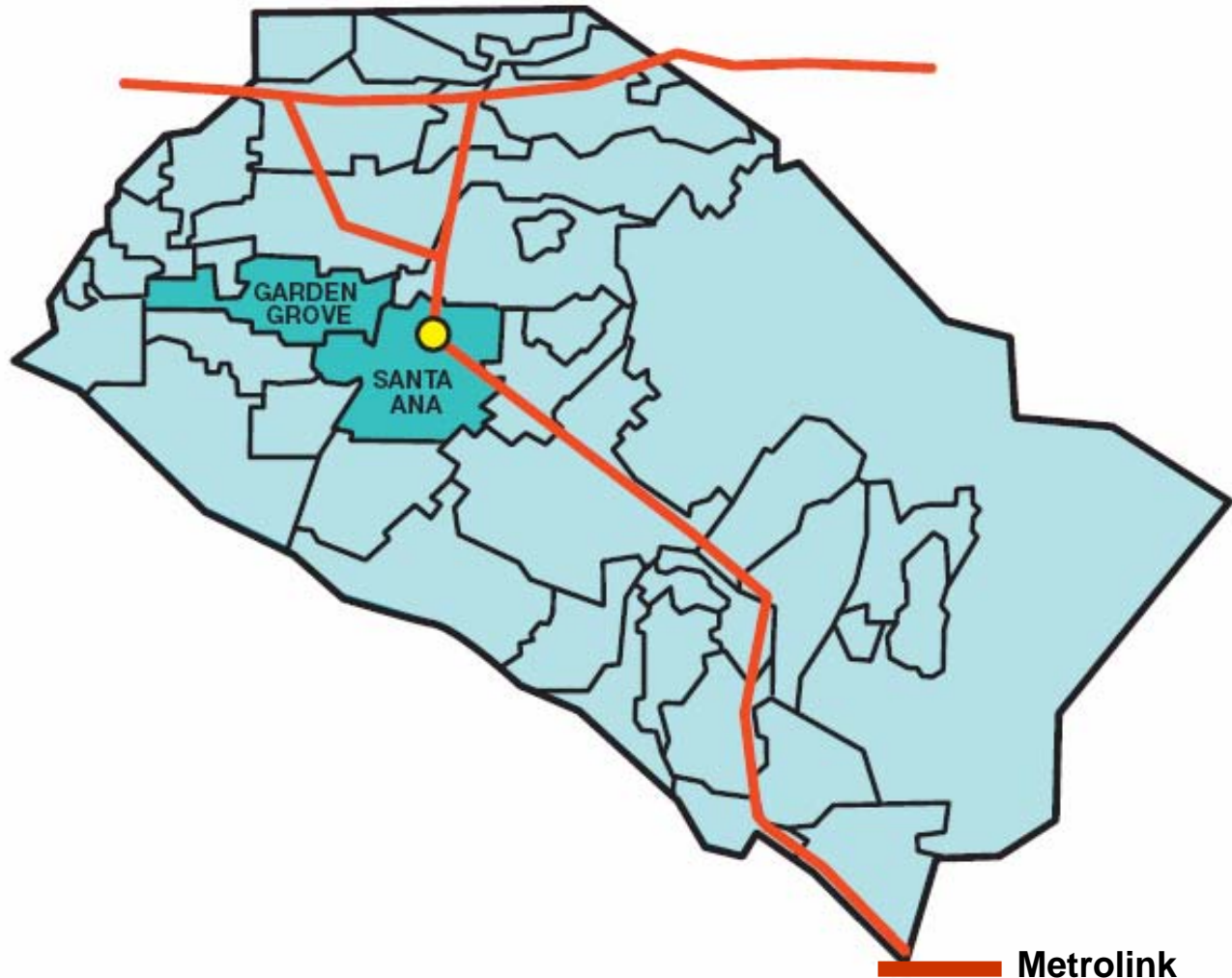


Cities of Santa Ana and Garden Grove Transit Vision and Go Local Project Concept

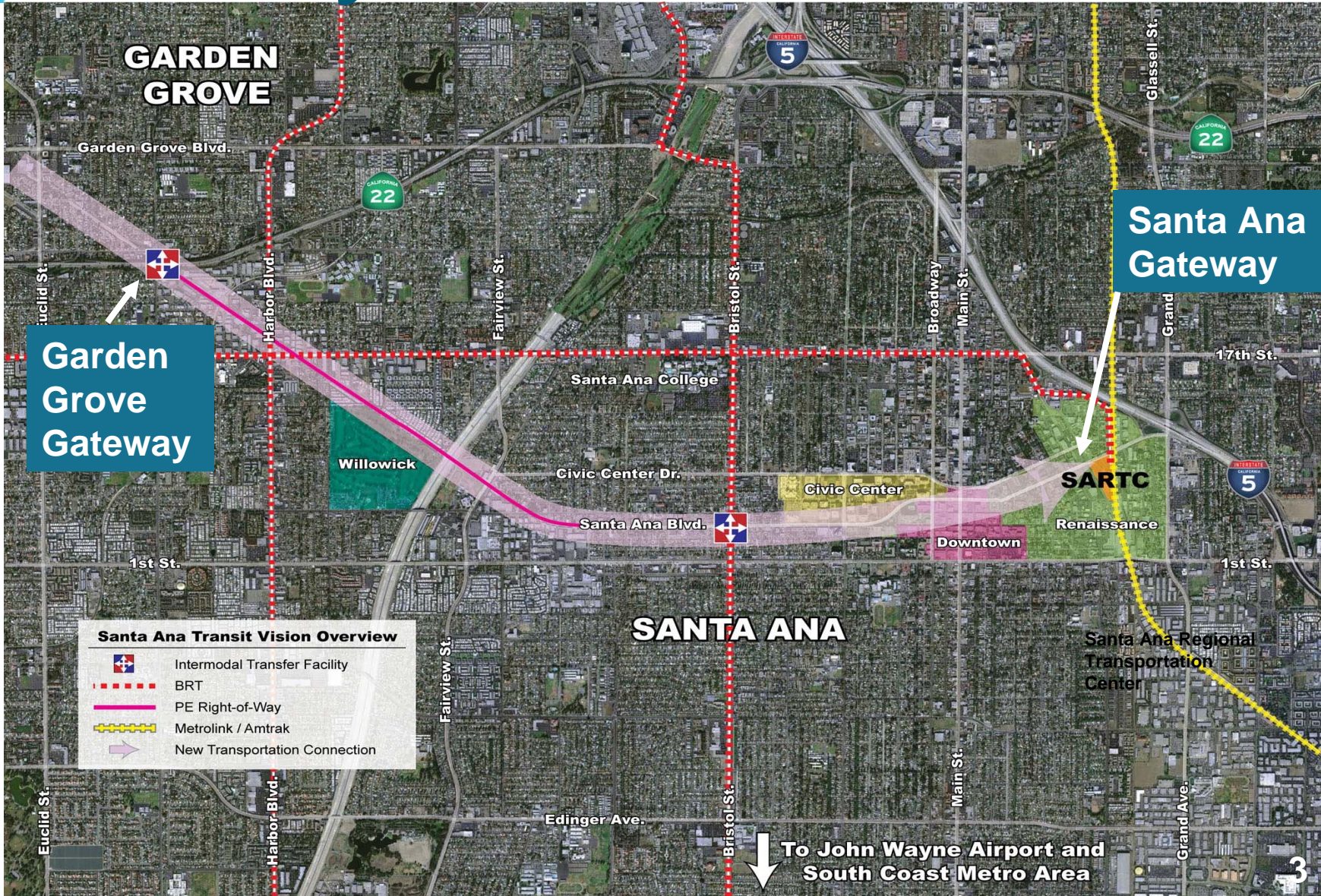


*Santa Ana &
Garden Grove Connect!*

Go Local Program Partnership Santa Ana & Garden Grove



→ Gateway Connection








GARDEN GROVE

Garden Grove Gateway

Santa Ana Gateway

SANTA ANA

Santa Ana Transit Vision Overview

-  Intermodal Transfer Facility
-  BRT
-  PE Right-of-Way
-  Metrolink / Amtrak
-  New Transportation Connection

To John Wayne Airport and South Coast Metro Area



Go Local Project Concept

**Fixed Guideway:
Modern Streetcar**



**Station Enhancements:
Santa Ana Regional
Transportation Center
(SARTC) Expansion**



**Multi-Modal Use of
Pacific Electric (PE)
Right-of-Way**



Fixed Guideway

Modern Streetcar

Metrolink
SARTC

Downtown
Civic Center

Garden Grove
PE Right-of-Way/SR-22



- Extends Metrolink into Central Orange County
- Creates New 5-Mile Transportation Corridor
- Connects Directly to Santa Ana Civic Center
- Built Entirely Within Public Right-of-Way
- Links Garden Grove to Metrolink
- Connects with Bristol & Harbor Bus Rapid Transit
- Promotes Economic Development



Station Improvements

Santa Ana Regional Transportation Center Expansion



- Accommodates Metrolink Enhancements
- Integrates Streetcar Station
- Provides Bus Rapid Transit Facilities
- Expands Parking at Station
- Separates Santa Ana Blvd. from Tracks
- Facilitates Transit Oriented Development

Multi-Modal Use of Pacific Electric Right-of-Way

- Maximizes Use of Public Right-of-Way
- Accommodates Expanded Multi-Modal Network
 - Streetcar
 - Bus Rapid Transit
 - Autos
 - Bikes
 - Pedestrians
- Improves Aesthetics of Existing Corridor
- Promotes Opportunities for Economic Development



Multi-Modal Use of Pacific Electric Right-of-Way

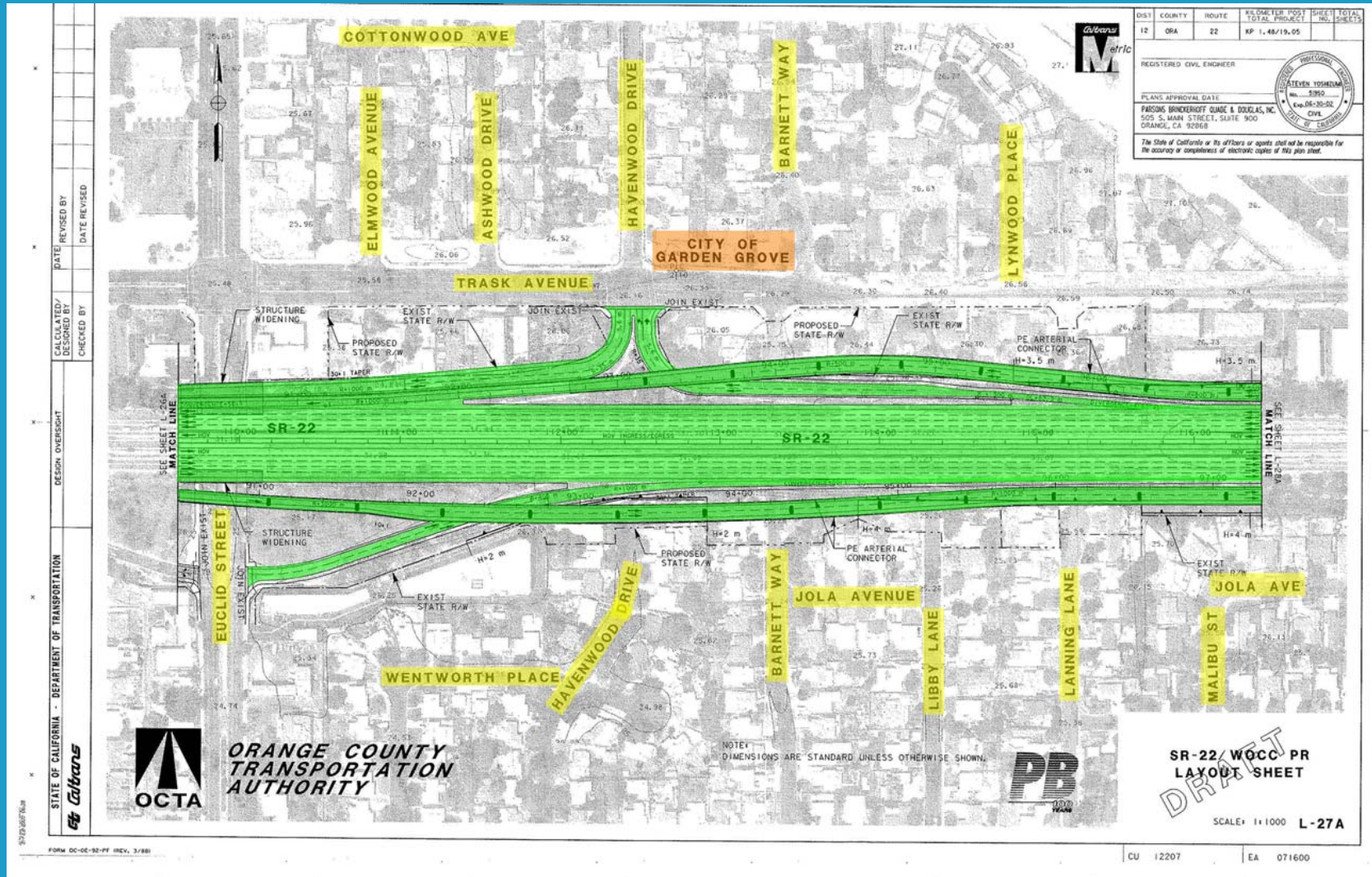


- Relieves Congestion at Orange Crush Interchange
- Opens Access to Garden Grove & Central Santa Ana
- Creates New Link in Orange County's Transportation System

Conceptual Layout

(continued)

Pacific Electric Right-of-Way

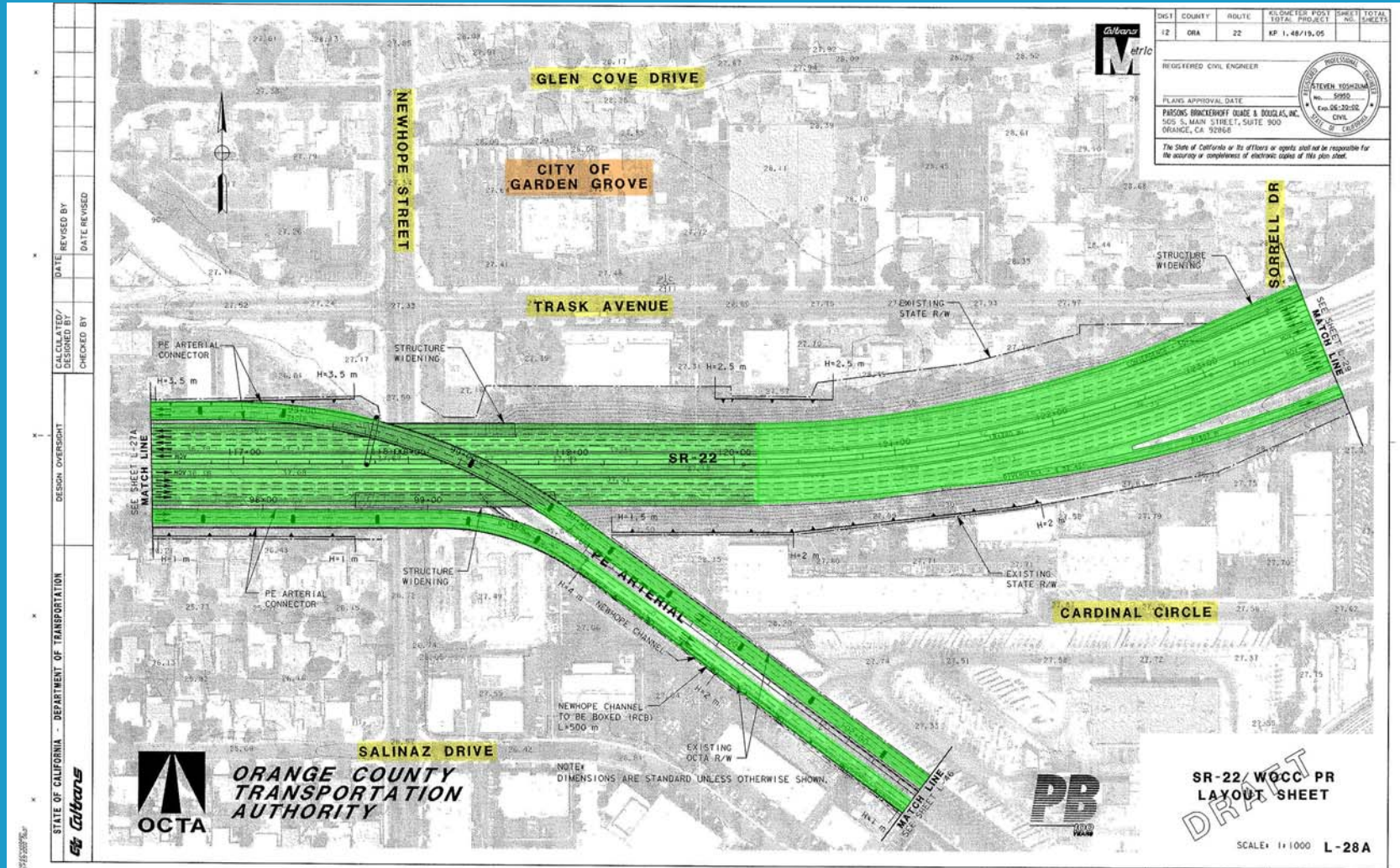


Conceptual Layout

(continued)



Pacific Electric Right-of-Way



DATE REVISION	DATE REVISION
CHECKED BY	CHECKED BY
DESIGNED BY	DESIGNED BY
DESIGN OVERSIGHT	DESIGN OVERSIGHT
STATE OF CALIFORNIA - DEPARTMENT OF TRANSPORTATION	STATE OF CALIFORNIA - DEPARTMENT OF TRANSPORTATION

DIST	COUNTY	ROUTE	KILOMETERS	FOOT	SHEET TOTAL
12	ORA	22	KP 1.48/19.05		

REGISTERED CIVIL ENGINEER

PLANS APPROVAL DATE

PARSONS BRINCKERHOFF QUAIN & BOGDAN, INC.
505 S. MAIN STREET, SUITE 900
ORANGE, CA 92666

STEVEN KOSHUMBA
No. 5992
Exp. 08-28-00
Civil

The State of California or its officers or agents shall not be responsible for the accuracy or completeness of electronic copies of this plan sheet.



**ORANGE COUNTY
TRANSPORTATION
AUTHORITY**

NOTE: DIMENSIONS ARE STANDARD UNLESS OTHERWISE SHOWN.

**SR-22 / WCCC PR
LAYOUT SHEET**

SCALE: 1" = 1000' L-28A

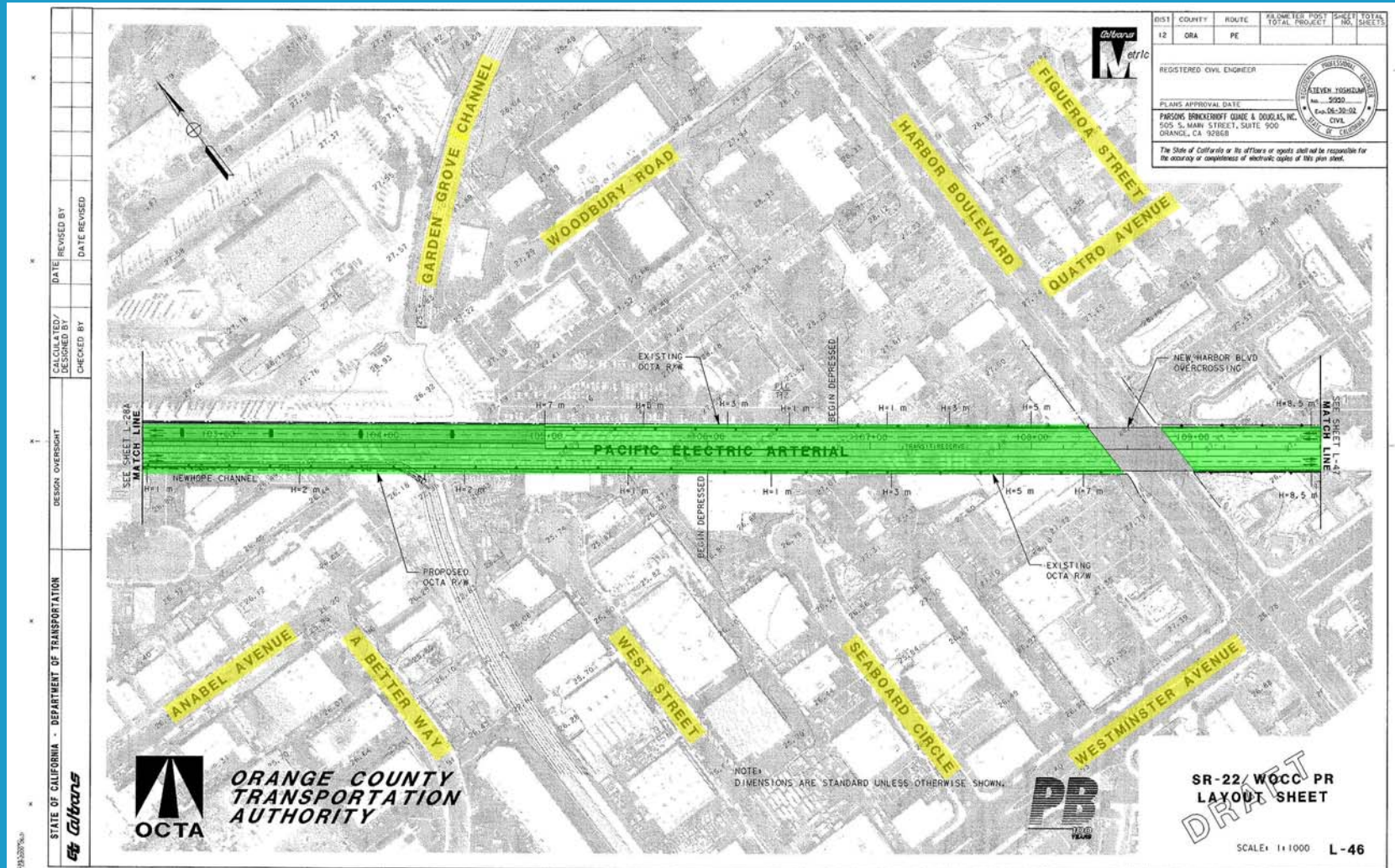
FORM DC-02-92-01 (REV. 3/88)

Conceptual Layout

(continued)



Pacific Electric Right-of-Way



DATE REVISED BY	DATE REVISED
CALCULATED/DESIGNED BY	CHECKED BY
DESIGN OVERSIGHT	
STATE OF CALIFORNIA - DEPARTMENT OF TRANSPORTATION	
Gilbrans	



**ORANGE COUNTY
TRANSPORTATION
AUTHORITY**



DIST	COUNTY	ROUTE	PROJECT NO.	SHEET NO.	TOTAL SHEETS
12	ORA	PE			
REGISTERED CIVIL ENGINEER					
PLANS APPROVAL DATE					
PARSONS BRINCKERHOFF GOMEZ & SOUSA, INC. 505 S. MAIN STREET, SUITE 900 ORANGE, CA 92668					
The State of California or its officers or agents shall not be responsible for the accuracy or completeness of electronic copies of this plan sheet.					

NOTE:
DIMENSIONS ARE STANDARD UNLESS OTHERWISE SHOWN.



**SR-22 / WCCC PR
LAYOUT SHEET**

DRAFT

SCALE: 1"=1000 L-46

FORM DC-02-92-PF (REV. 3/88)

Conceptual Layout

(continued)

Pacific Electric Right-of-Way



DATE REVISIONS/ DESIGNED BY	DATE REVISIONS/ CHECKED BY
DESIGN OVERSIGHT	
STATE OF CALIFORNIA - DEPARTMENT OF TRANSPORTATION	

Caltrans
Metric

REGISTERED CIVIL ENGINEER

PLANS APPROVAL DATE: 09/06/00

PARSONS BRINCKERHOFF QUAIN & DOUGLAS, INC.
555 S. MAIN STREET, SUITE 900
ORANGE, CA 92668

STEVEN YOSHIDA
REGISTERED CIVIL ENGINEER

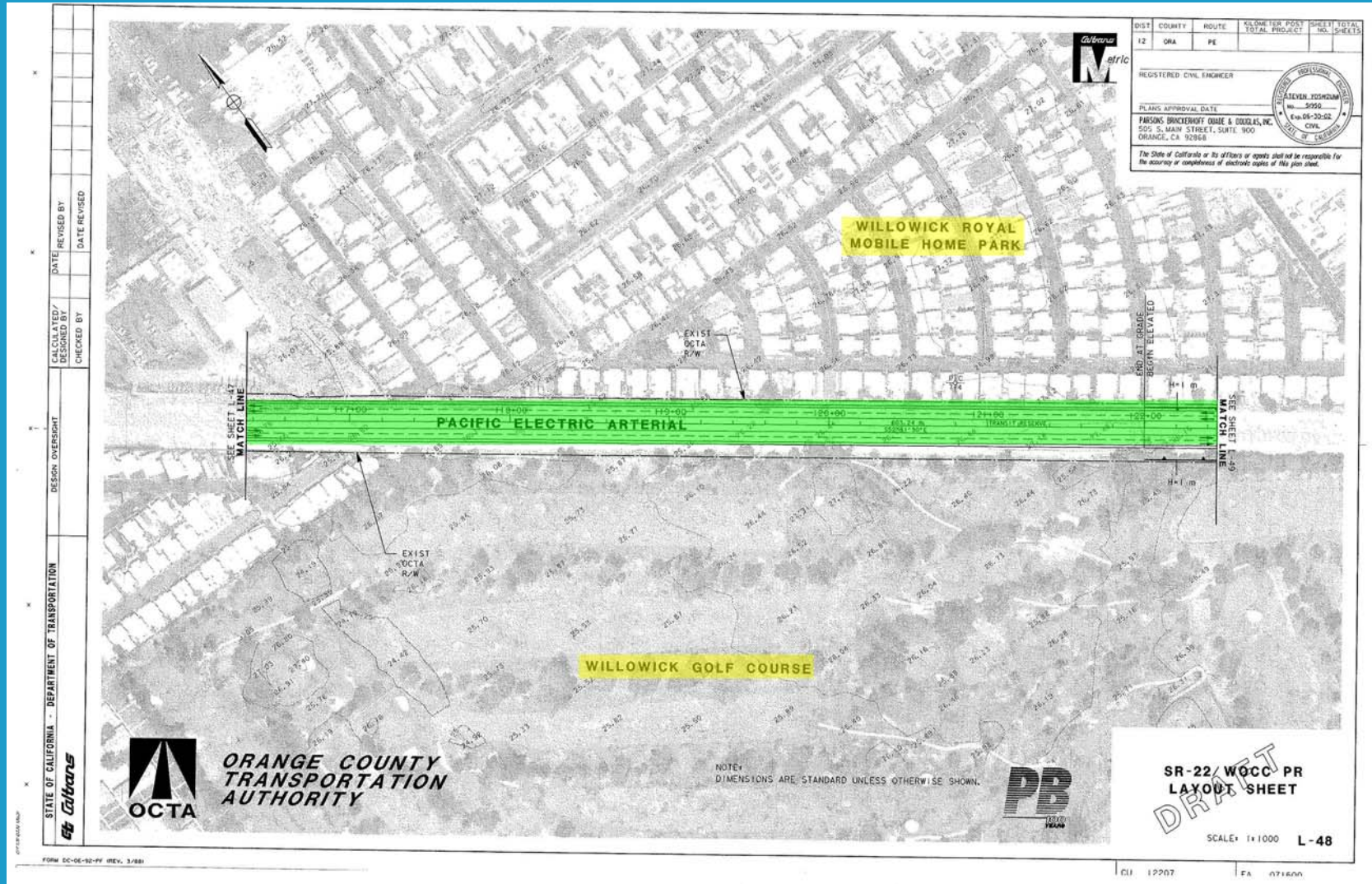
THE STATE OF CALIFORNIA

DIST	COUNTY	ROUTE	KILOMETER TOTAL PROJECT	FEET TOTAL PROJECT	SHEET NO.	TOTAL SHEETS
12	ORA	PE				

Conceptual Layout

(continued)

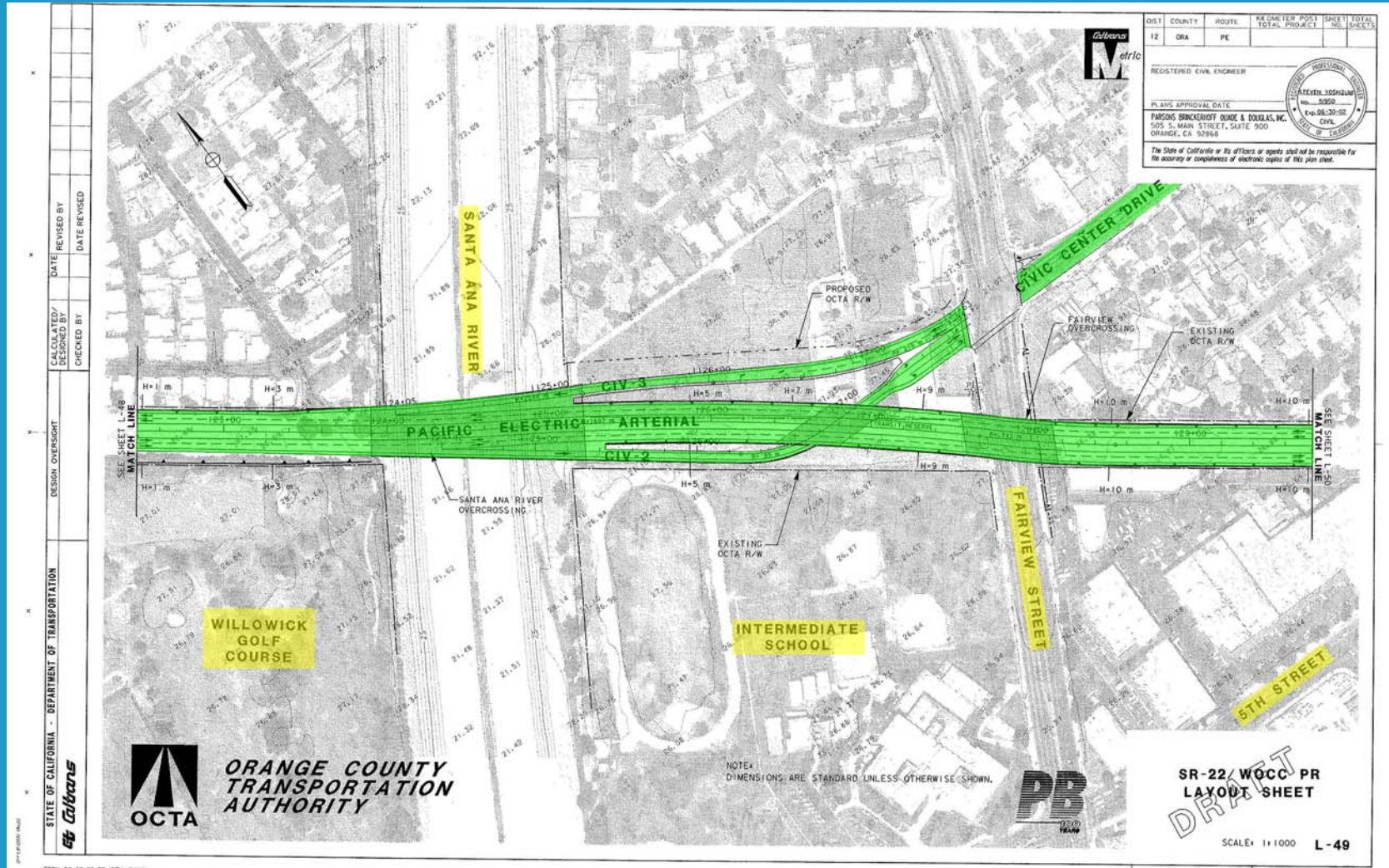
Pacific Electric Right-of-Way



Conceptual Layout

(continued)

Pacific Electric Right-of-Way

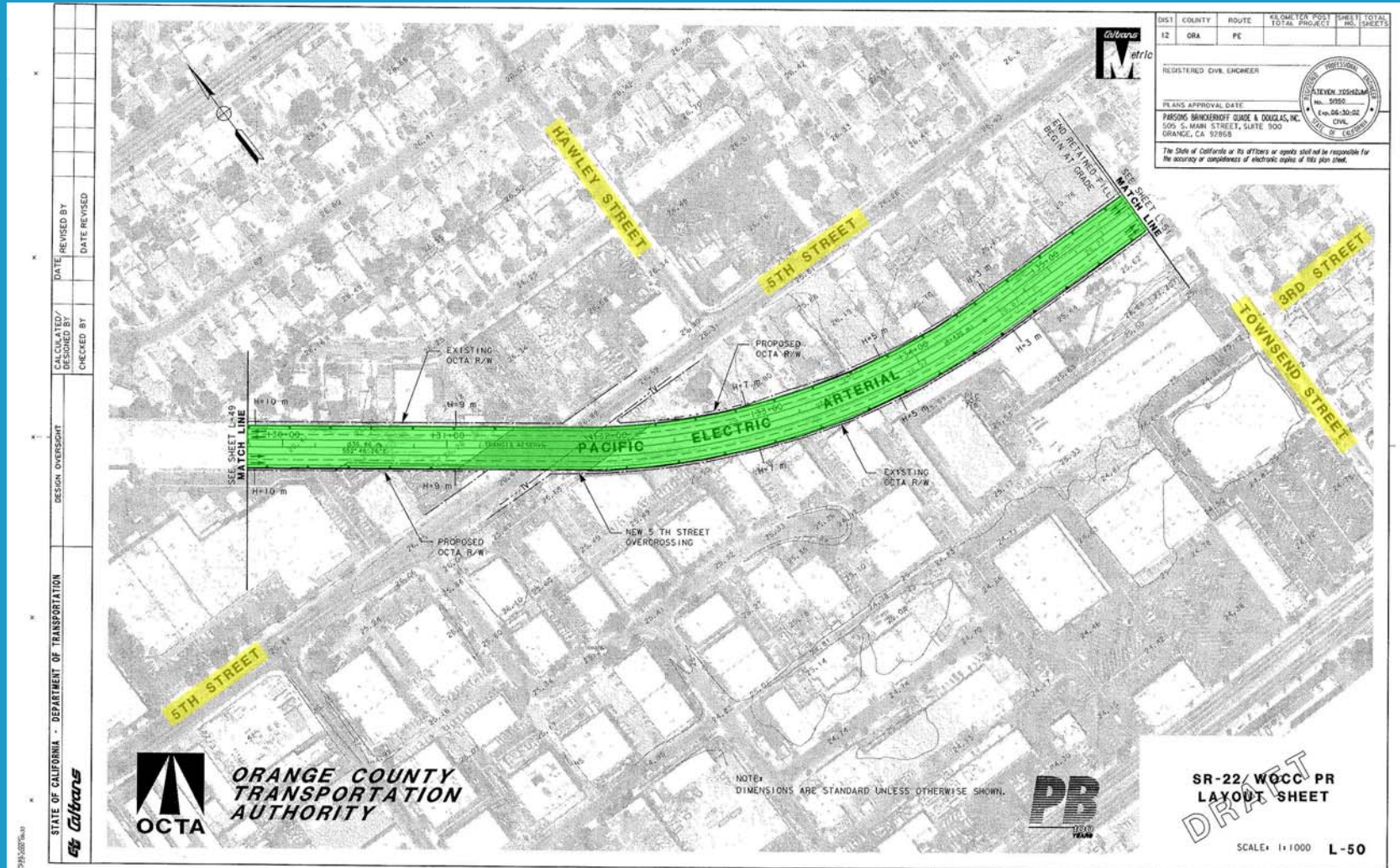


Conceptual Layout

(continued)



Pacific Electric Right-of-Way



FORM DC-06-92-PF (REV. 3/78)

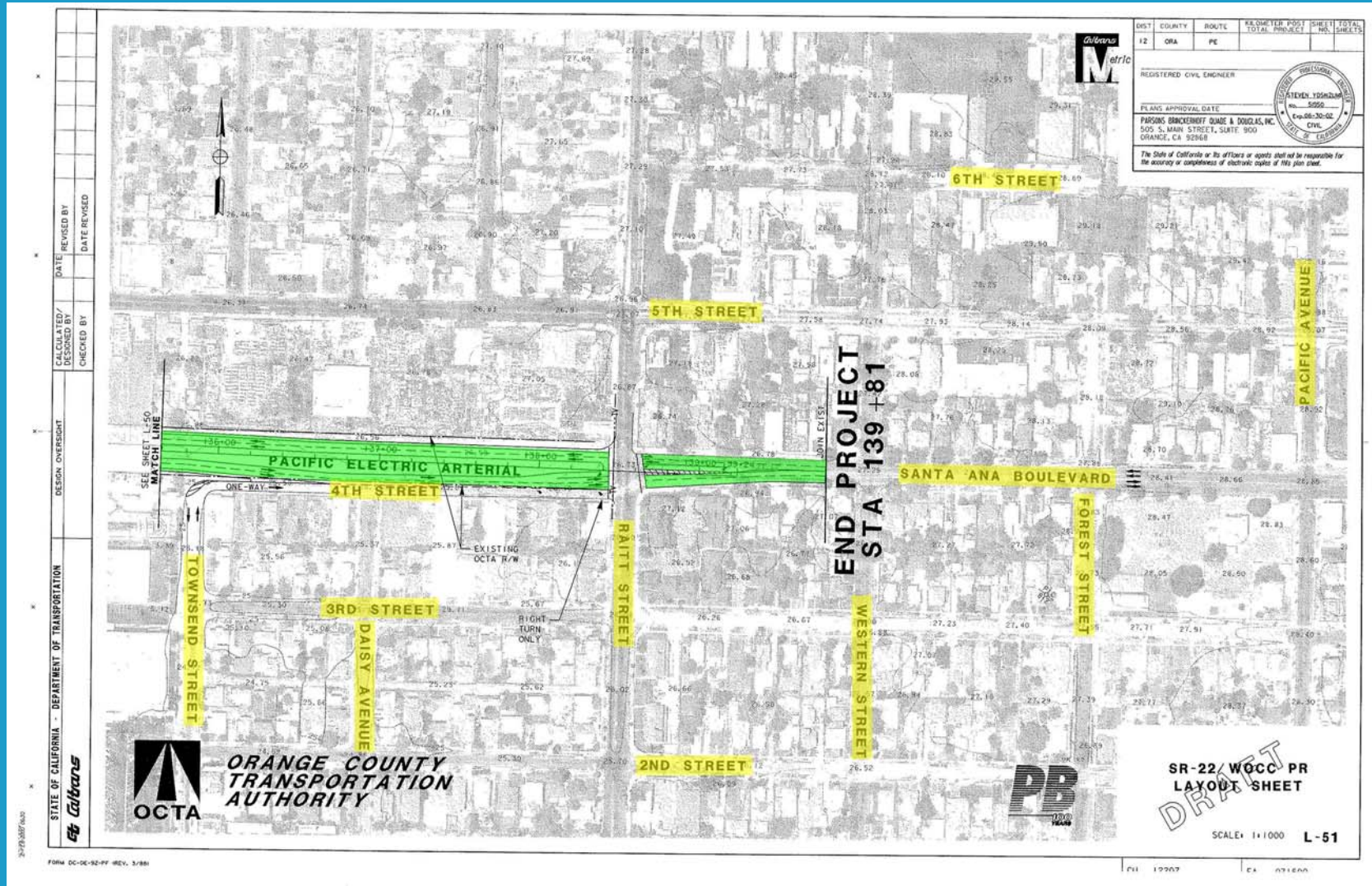
CU 12207 EA 071600

Conceptual Layout

(continued)



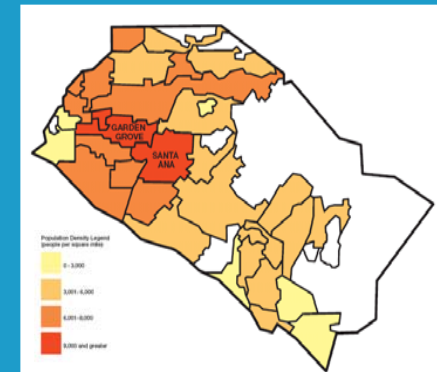
Pacific Electric Right-of-Way



Why it Works

Ridership Generation Potential

- Growing Rail Ridership
- High Existing Transit Ridership
- High Population & Employment Density
- Strong Travel Patterns
- Key Activity Centers
- Local & Regional Connections
- Access & Capacity Improvements
- Supporting Land Use, Plans & Policies



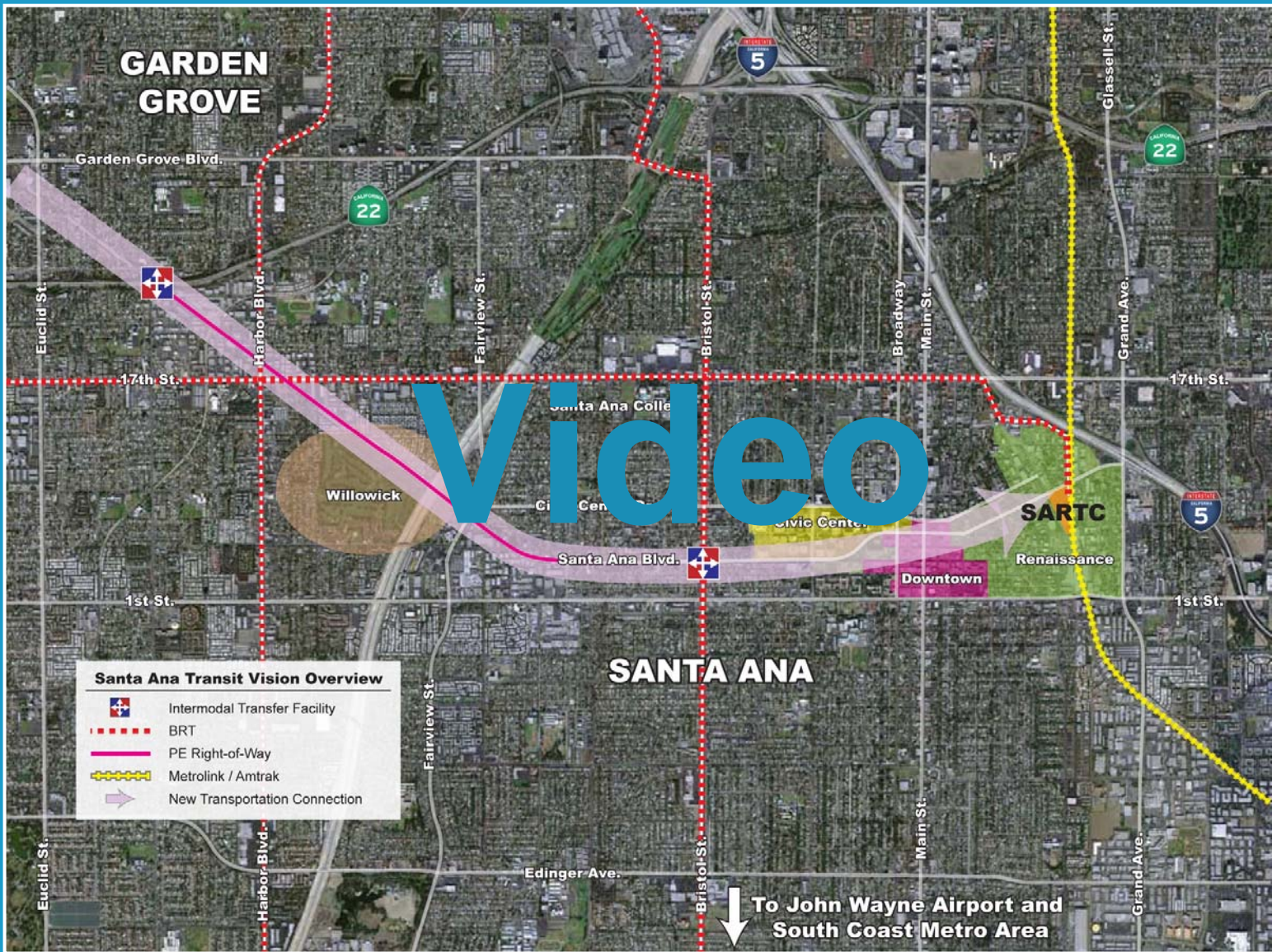
Santa Ana & Garden Grove Connect!

Summary

- Extends Reach of Metrolink to Central Orange County
- Promotes Metrolink & Transit System Ridership
- Builds on Existing SARTC Inter-modal Transportation Hub
- Links Key Activity/Employment Centers to Commuter Rail
- Offers Creative & Cost-Effective Use of Existing Public Right-of-Way
- Supports Planned Transit-Oriented Development

Santa Ana & Garden Grove

Connect!



↓ To John Wayne Airport and South Coast Metro Area