

WEST COUNTY CONNECTORS



WEST COUNTY CONNECTORS PROJECT UPDATE





EAST AND WEST SEGMENTS





PROJECT FUNDING

EAST SEGMENT

Congestion Mitigation and Air Quality (CMAQ)	\$65 M
American Recovery and Reinvestment Act	\$50 M
East Segment TOTAL	\$115 M

WEST SEGMENT

Corridor Mobility Improvement Act / Proposition 1B	\$135 M
CMAQ	\$15 M
Local Funds (City of Seal Beach and Measure M)	\$12 M
West Segment TOTAL	\$162 M
West County Connectors Project TOTAL	\$277 M



EAST SEGMENT MILESTONES

- **Valley View Street Overcrossing (OC) – completed June 2012**
- **Southbound (SB) I-405 / Eastbound (EB) SR-22 Connector Replacement**
 - Traffic shift and bridge demolition summer 2013
- **SR-22 / I-405 High-Occupancy Vehicle (HOV) Connector**
 - Bridge foundation and substructure construction



WEST COUNTY CONNECTORS

22

405

605



VALLEY VIEW STREET OC RECONSTRUCTION





SOUTH I-405 / EAST SR-22 CONNECTOR





WEST SEGMENT MILESTONES

- **7th Street Bridge Reconstruction** – completed April 2012
- **Two Week Connector Closures** – completed August 2012
 - SB I-405 / SB I-605
 - EB SR-22 / SB I-405
- **Seal Beach Boulevard OC Reconstruction**
 - West half demolished September 2012
 - To be completed September 2013
- **I-405 / I-605 HOV Connector**
 - Bridge columns complete
- **EB SR-22 / Northbound I-405 Connector**
 - Bridge foundation work in progress





7TH STREET BRIDGE RECONSTRUCTION





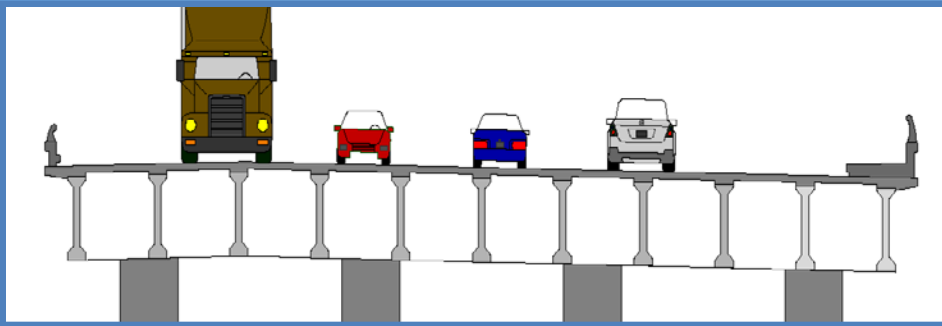
SEAL BEACH BOULEVARD OC DEMOLITION





SEAL BEACH BOULEVARD OC

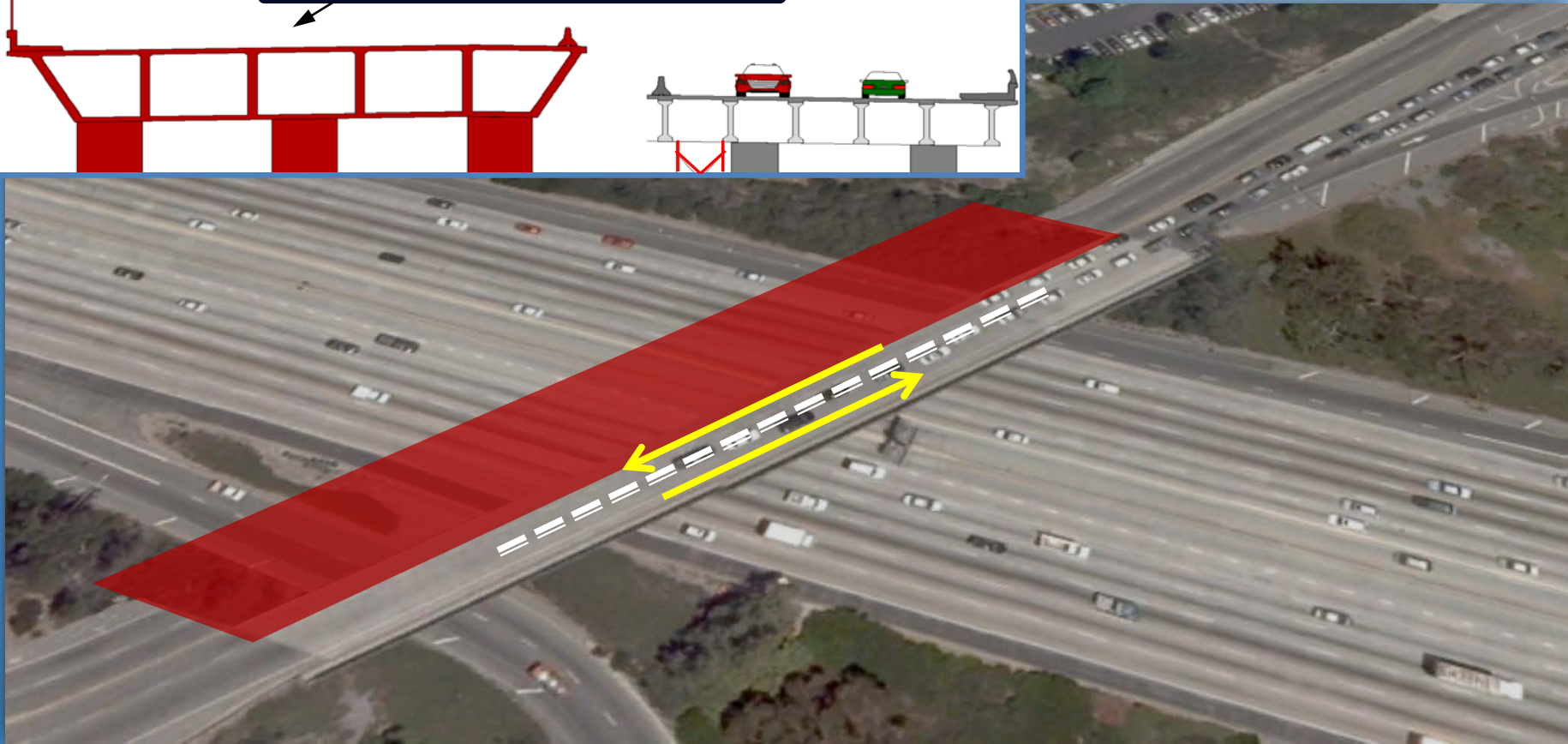
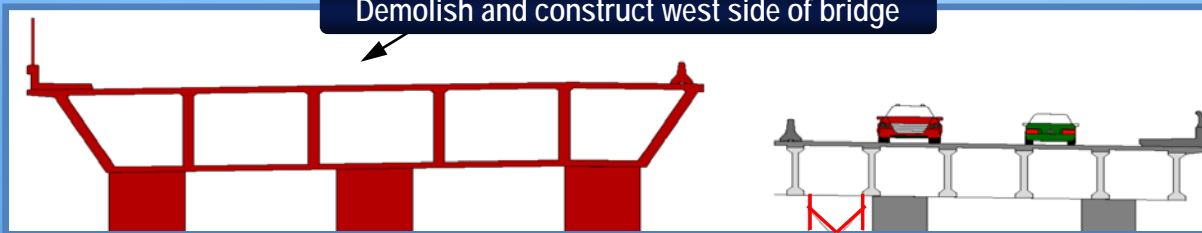
Previous Conditions





SEAL BEACH BOULEVARD OC Phase One – Current Condition

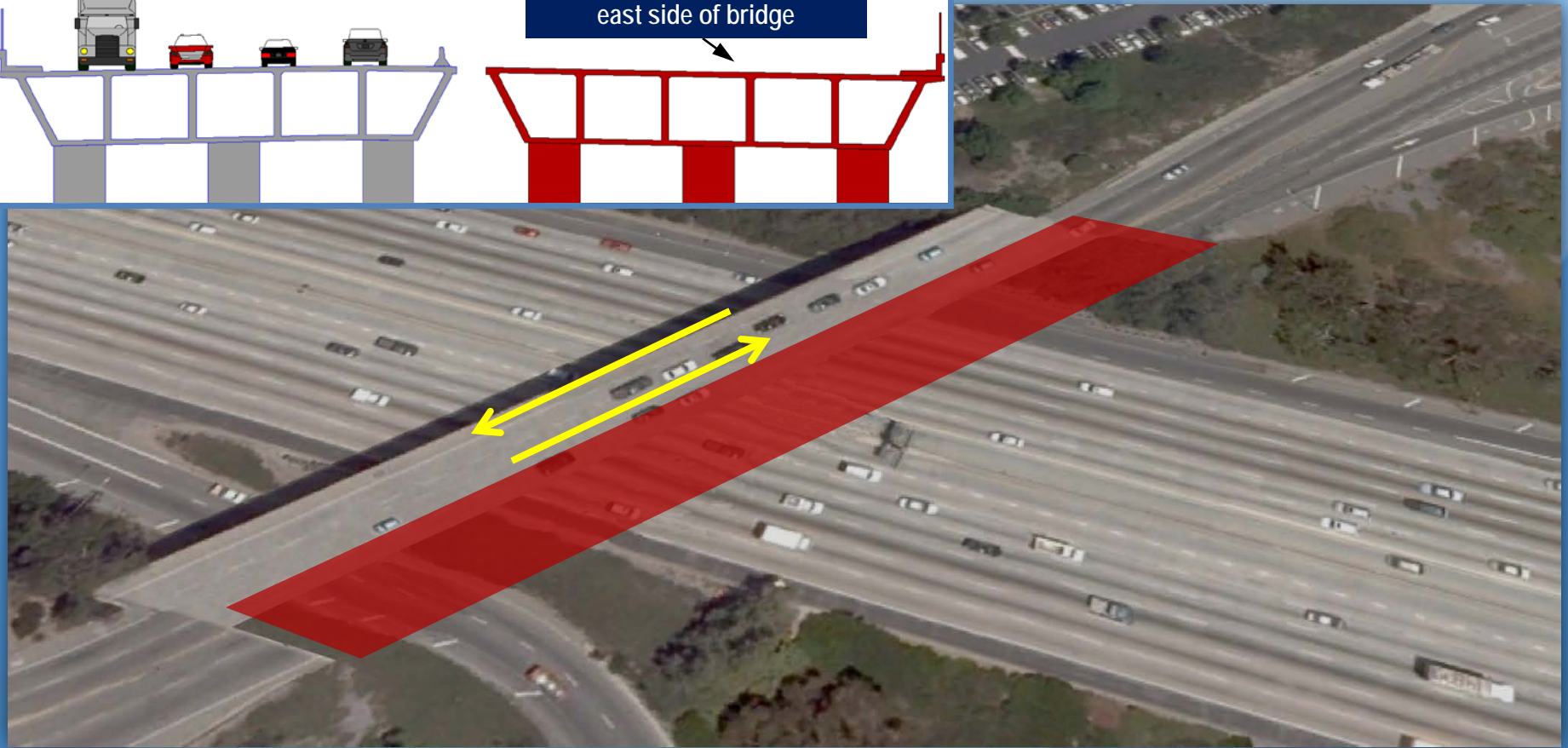
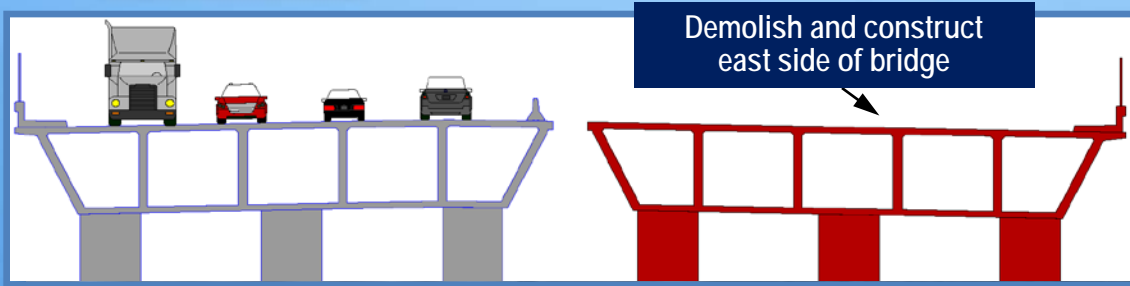
Demolish and construct west side of bridge





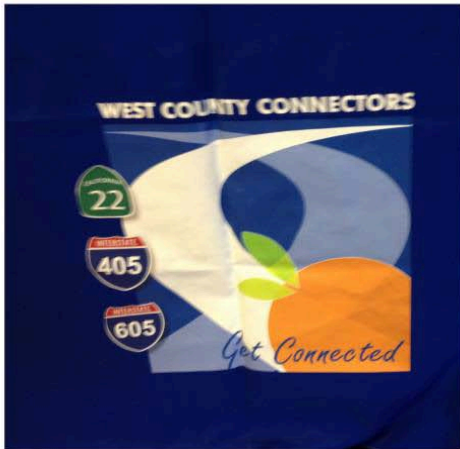
SEAL BEACH BOULEVARD OC

Phase Two – Late Summer / Early Fall 2013





PUBLIC OUTREACH



CONSTRUCTION ALERT
SOUTHBOUND I-605 / SOUTHBOUND I-405 CONNECTOR
TWO-WEEK CLOSURE BEGINNING MONDAY, JULY 30

WHAT: On Monday, July 30 at 10 p.m. crews will close the southbound I-605 to southbound I-405 connector for approximately two weeks. The connector is expected to reopen by mid-August.

WHY: This closure is necessary to realign the connector to accommodate the construction of the 405 / 605 HOV connector. Please be advised this closure may impact traffic congestion on local surface streets. We urge commuters to use alternate routes for the duration of the two-week closure.

Southbound I-405 / Southbound I-605 Connector Closure (Approx. 2 weeks)
 Closure Detour Routes

Detour for Sunday through Thursday nights between 11 p.m. and 5 a.m.

West County Connectors PROJECT

322 **26**
 DRIVEWAY PILES, BOTH CONCRETE AND STEEL. **BULLDOZERS!**

\$2.1 MILLION worth of 7th St. construction

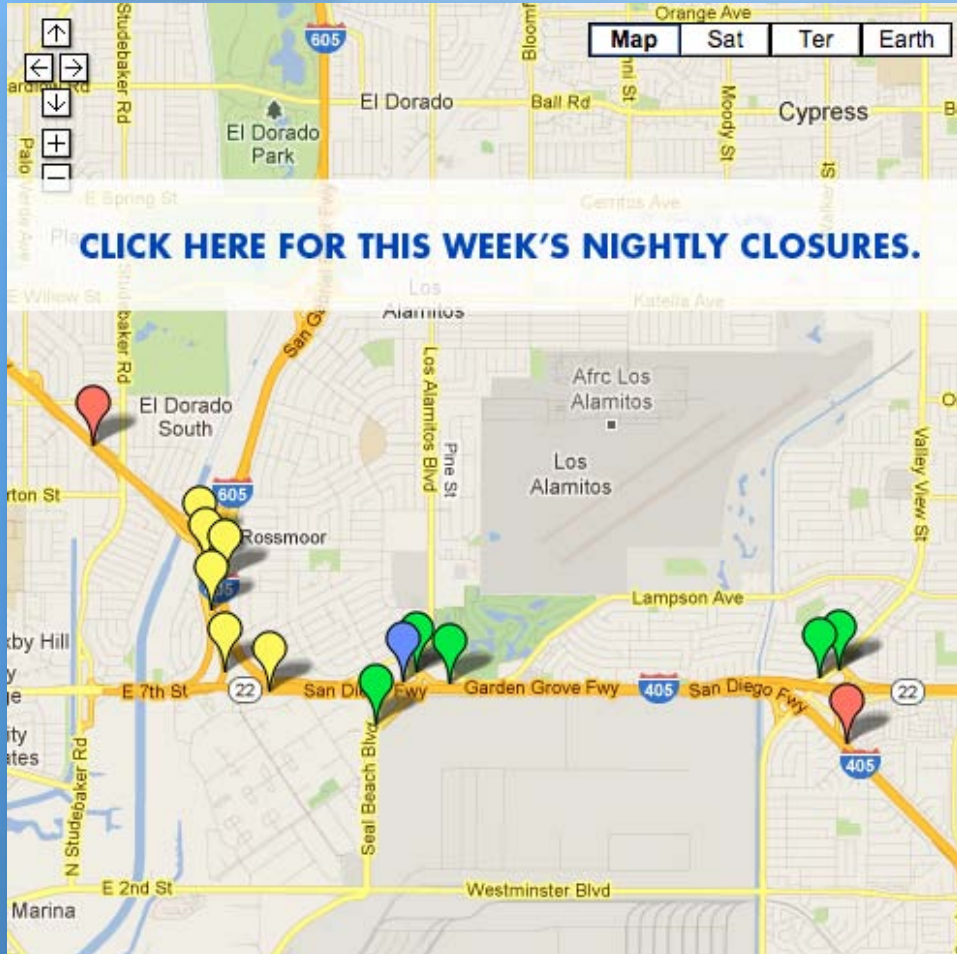
77,000 **40**
 SQUARE FEET WERE DESTROYED. **COMMUNITY MEETINGS** were held prior to the start of the open-bid process to inform the public and answer questions.

45 **748**
FEET THAT'S LONGER THAN AN OCEA BUS. **FEET'S LENGTH** incorporating base frame of trailer, plus overheads.

BY THE NUMBERS



INTERACTIVE GOOGLE MAP and UPCOMING DEMOLITION



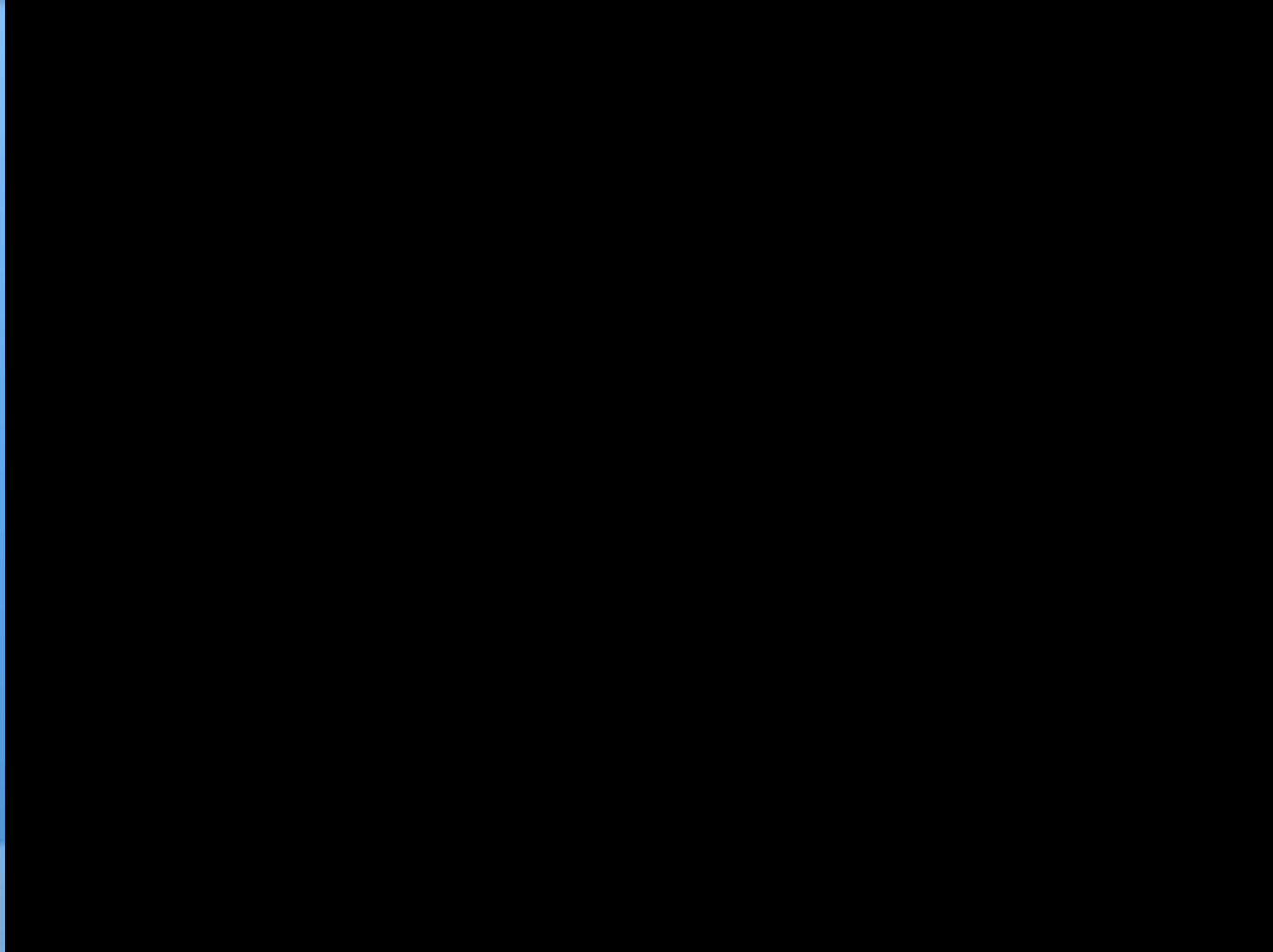
SB I-405 / EB SR-22 CONNECTOR DEMOLITION

- Portions of the I-405 will be CLOSED for approximately 20 hours
- Scheduled for **summer 2013**
- Comprehensive outreach plan underway

WEST COUNTY CONNECTORS



WEST COUNTY CONNECTORS (WCC) PROJECT VIDEO





WCC BY THE NUMBERS

Facebook Likes: 868



Twitter Followers: 558



E-Blasts Sent: 325



Auto-Calls Sent: 30



Fliers Canvassed: 176,941



Media Stories: 430





FOR MORE INFORMATION

GETCONNECTED >>>



Stay plugged in to the WCC project!
Various detours and delays are expected, so make sure you know before you go!

For project information and detour routes,
visit www.octa.net/westcounty



Become a fan: www.facebook.com/WCCProjectInfo



Follow the project on Twitter: [@WCCProjectInfo](https://twitter.com/WCCProjectInfo)



Call the Construction Helpline: (800) 724-0353



For more information, contact Sarah King at wccproject@octa.net.