

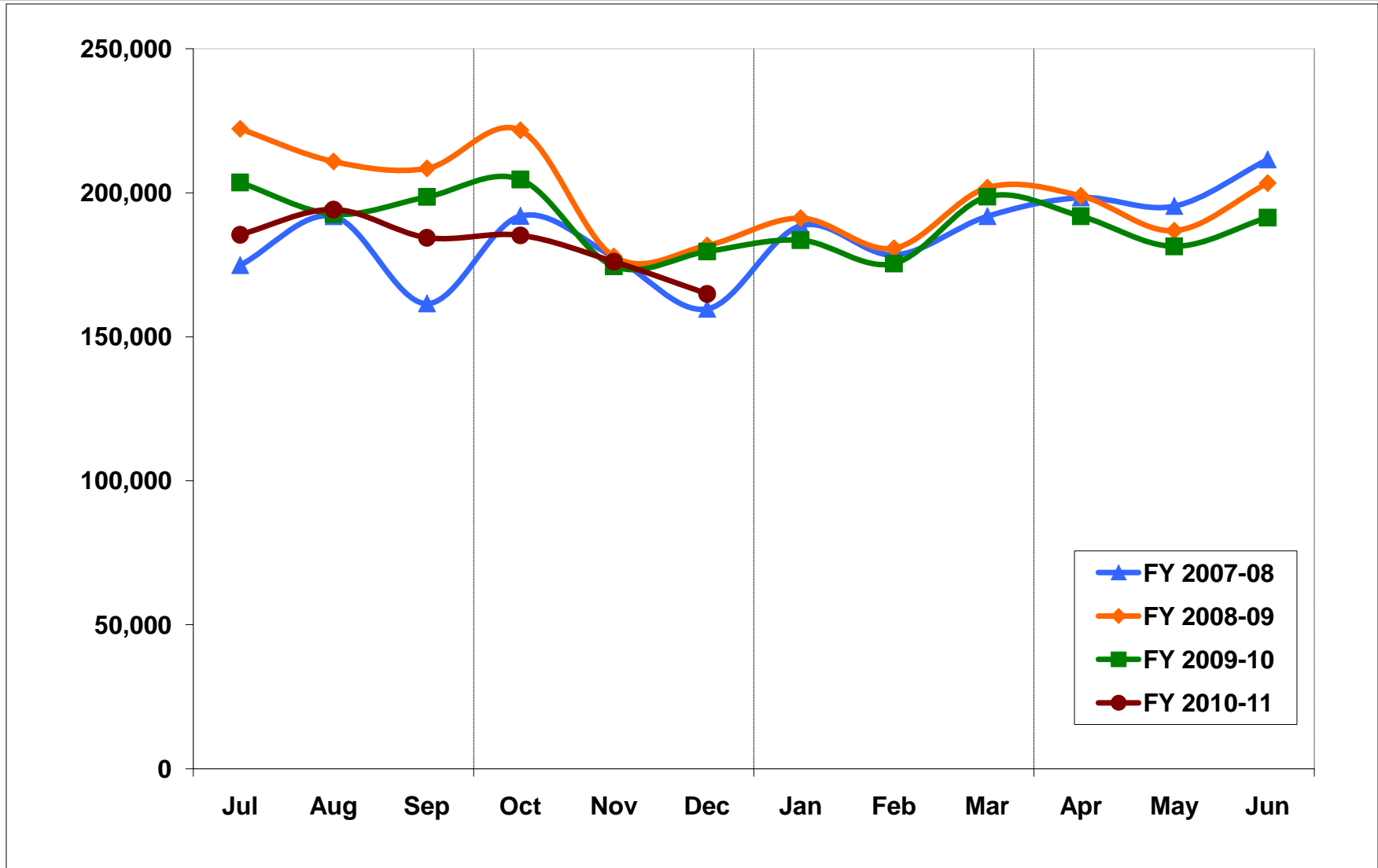
# Metrolink Ridership and Revenue Quarterly Report

# Metrolink Lines Serving Orange County

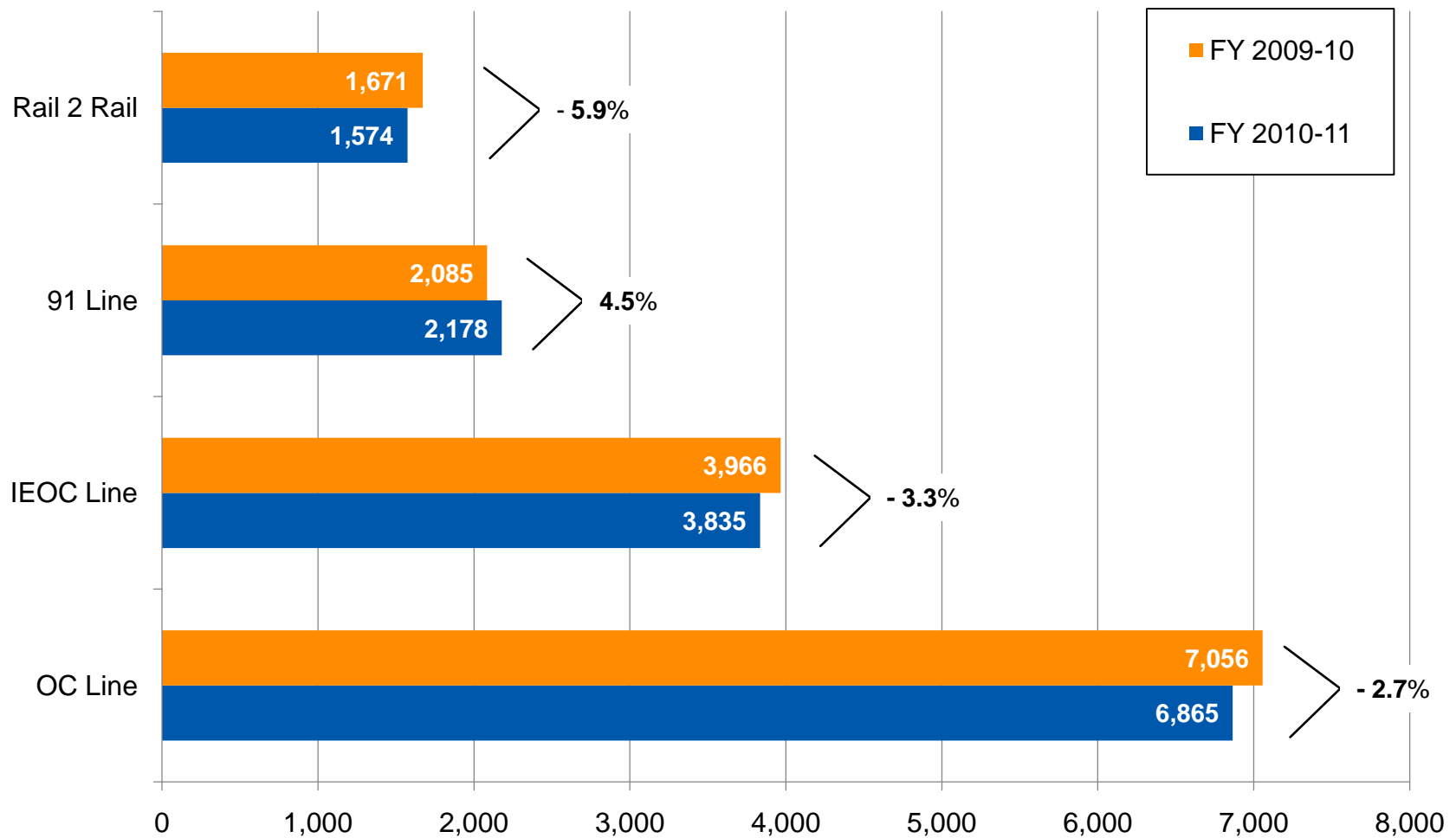


- 91 Line  
(Riverside – Fullerton – Los Angeles)
- Inland Empire-Orange County Line  
(San Bernardino – Oceanside)
- Orange County Line  
(Los Angeles – Oceanside)
- 42 weekday trains
- 11 stations

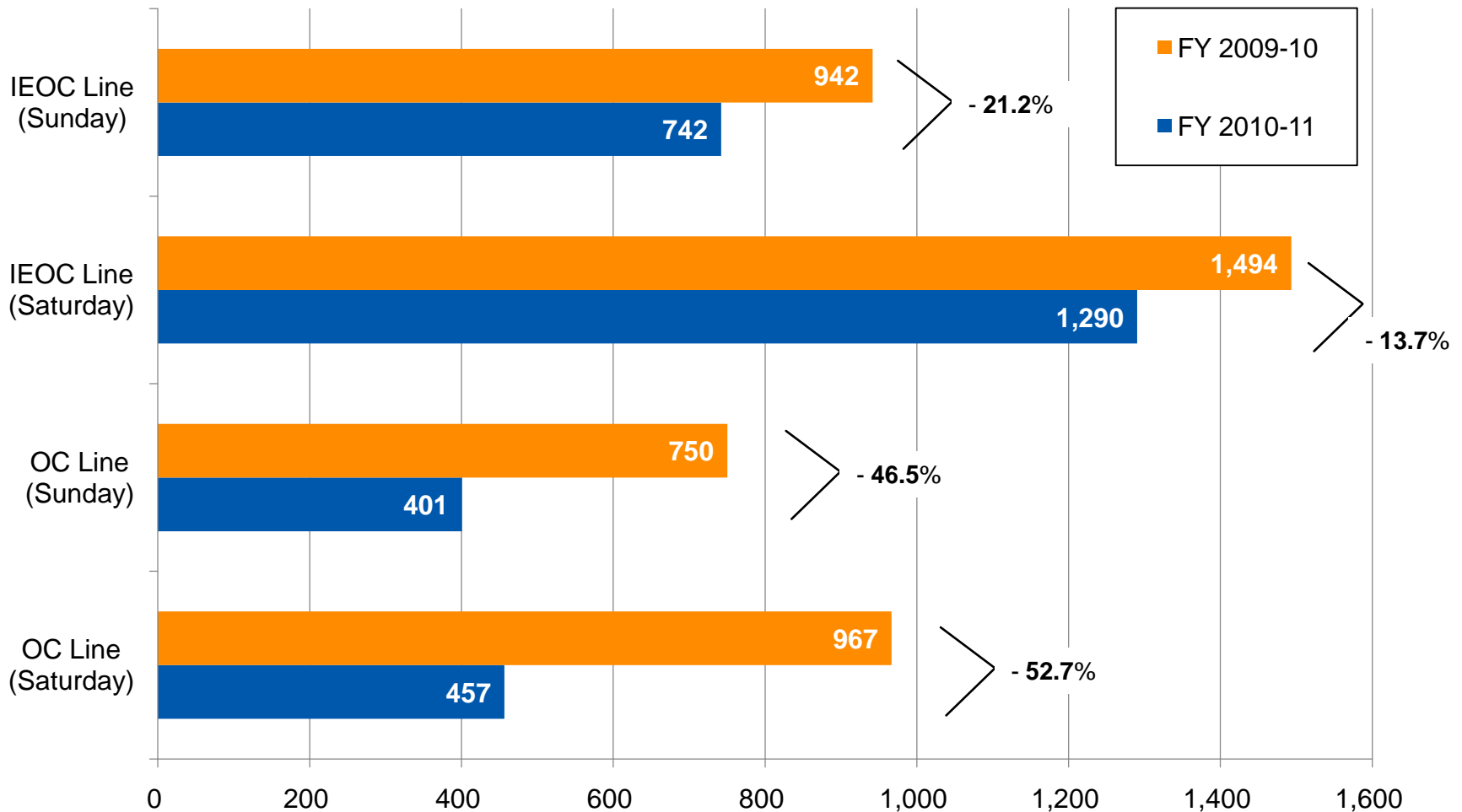
# Total Metrolink Ridership (Weekday and Weekend) OC, IEOC, and 91 Lines



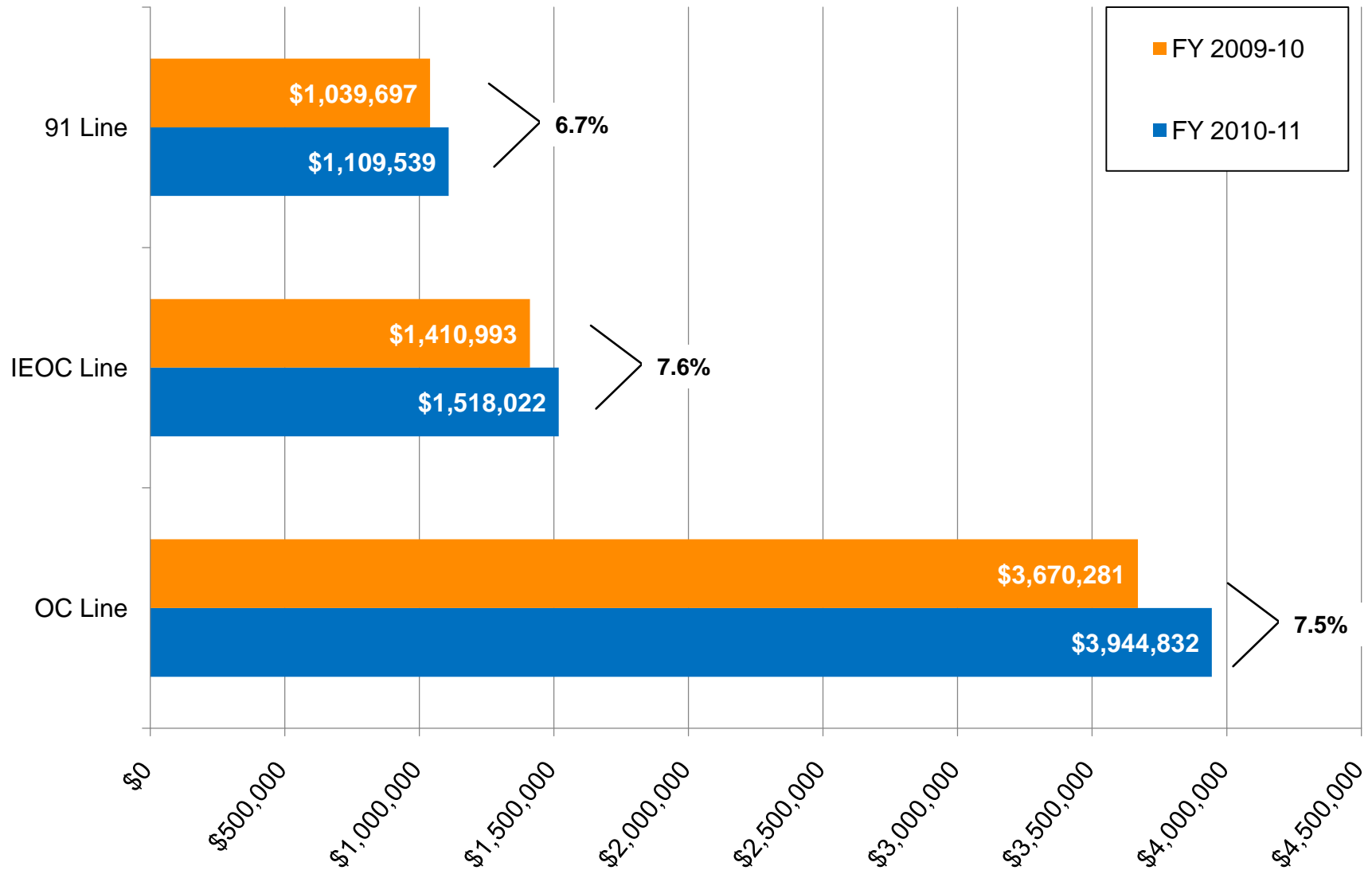
# Average Weekday Ridership



# Average Weekend Ridership



# Revenue



# On-Time Performance

- Weekday
  - OC Line 91.2%
  - IEOC Line 95.3%
  - 91 Line 96.5%
  - Average 94.3%

---

  - Systemwide 94.4%
  
- Weekend
  - OC Line 96.3%
  - IEOC Line 93.3%
  - Average 94.8%

---

  - Systemwide 92.3%



# Other Items

- OC Line service suspension on 3/27/11
- New Pacific Surfliner Express – 2/15/11
  - Slight time change to OC Line train 687
- Metrolink continues to receive new rail cars

