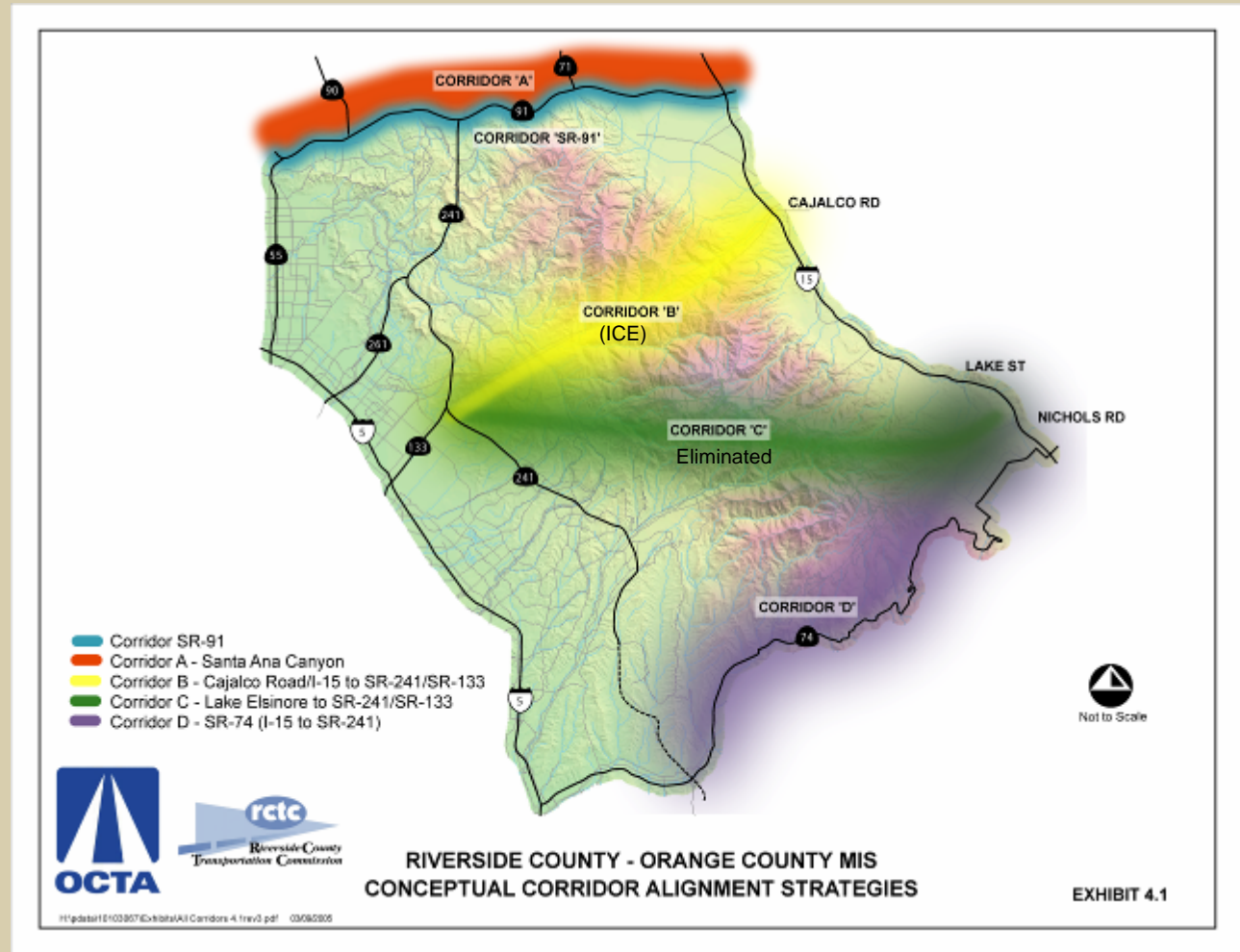


Irvine Corona Expressway (ICE) Riverside County-Orange County Geotechnical Study Update

February 25, 2008

RC-OC MIS Corridor Strategies

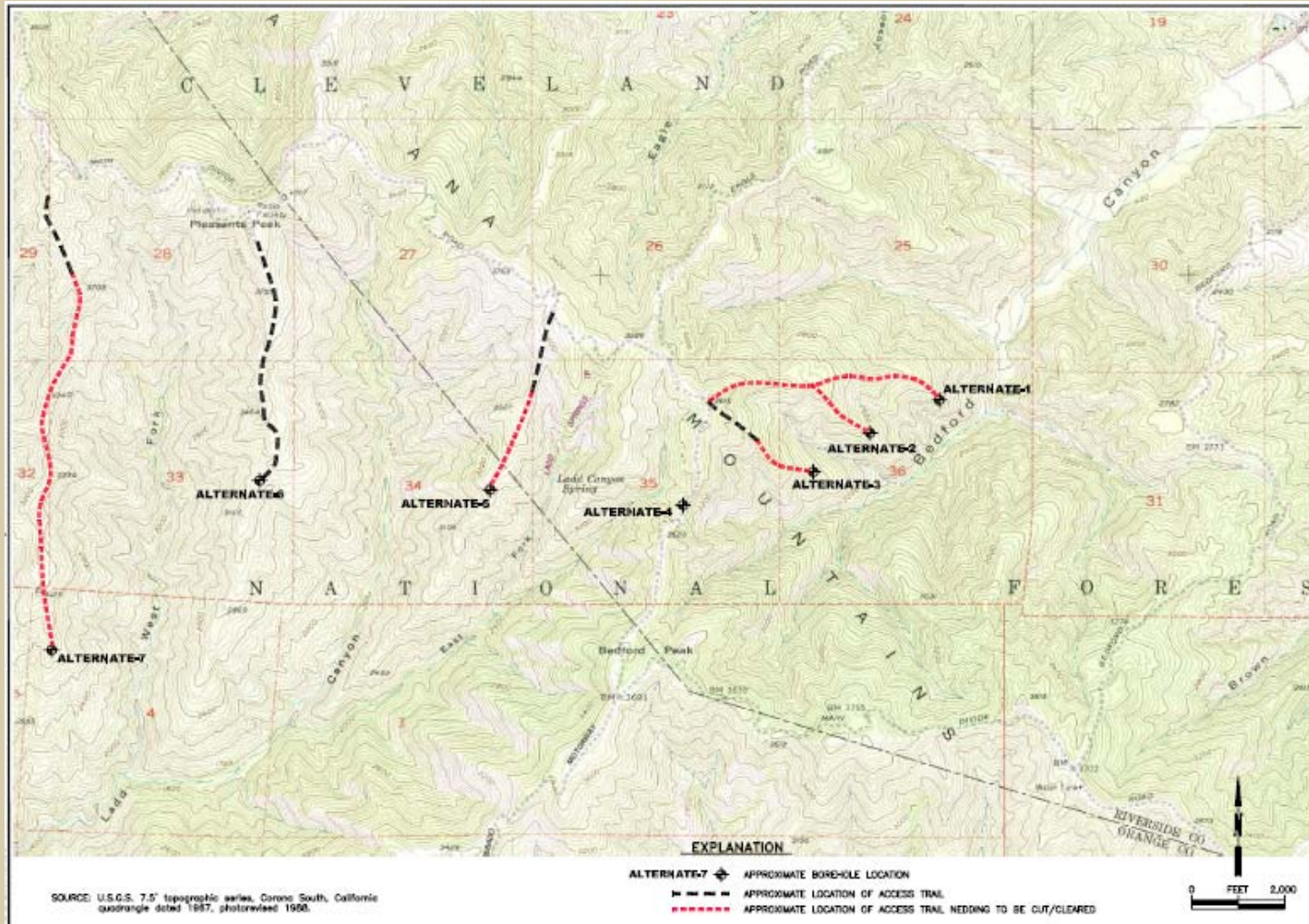
- Brief Overview of MIS Findings
- Corridor B, Irvine-Corona Expressway (ICE)
 - Special Use Permit Application
 - Collection Agreement



ICE Project Description

- **Purpose – Vehicular Transportation**
- **Two 50-Foot Diameter Tunnels**
- **11-Mile Long Tunnels, Two Lanes Each**
- **Geotechnical Feasibility Study**

ICE Alternative Core Holes Sites



Exploratory Core Hole Site



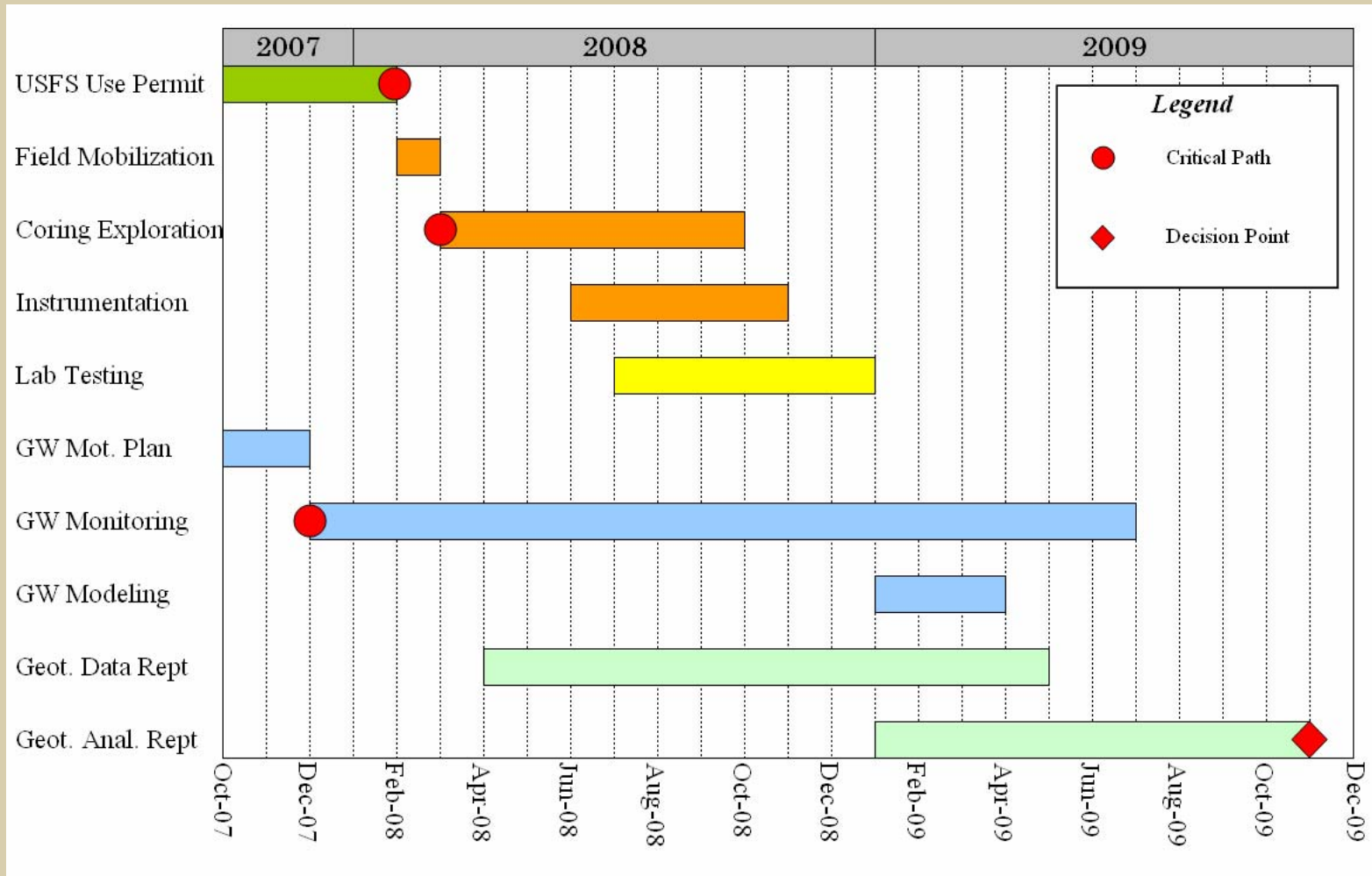
Logistical Challenges

- **Mobilization in Rugged Terrain**
- **Delivery of Water and Supplies**
- **Compliance with Environmental Conditions of Forest Service Permit**
- **Communication**
- **Daily Helicopter Access - Weather**
- **Health and Safety**
- **Vandalism**

USFS Permit Requirements

- **Work Scope Description**
- **Drill Site Clearance**
- **Trail Access - Walking**
- **Biological / Archaeological Surveys**
- **Fire Plan, Equipment and Water Source**
- **Fire Monitor**

ICE Feasibility Study Schedule



Metropolitan Water District Central Pool Augmentation (CPA)

- Two Core Holes to 2,500 ft
- Rock Core Descriptions
- Geophysical Surveys
- Groundwater Monitoring
- Laboratory Testing
- Water Tunnel Feasibility

Remote Sites

Cleveland National Forest



CPA – C-1



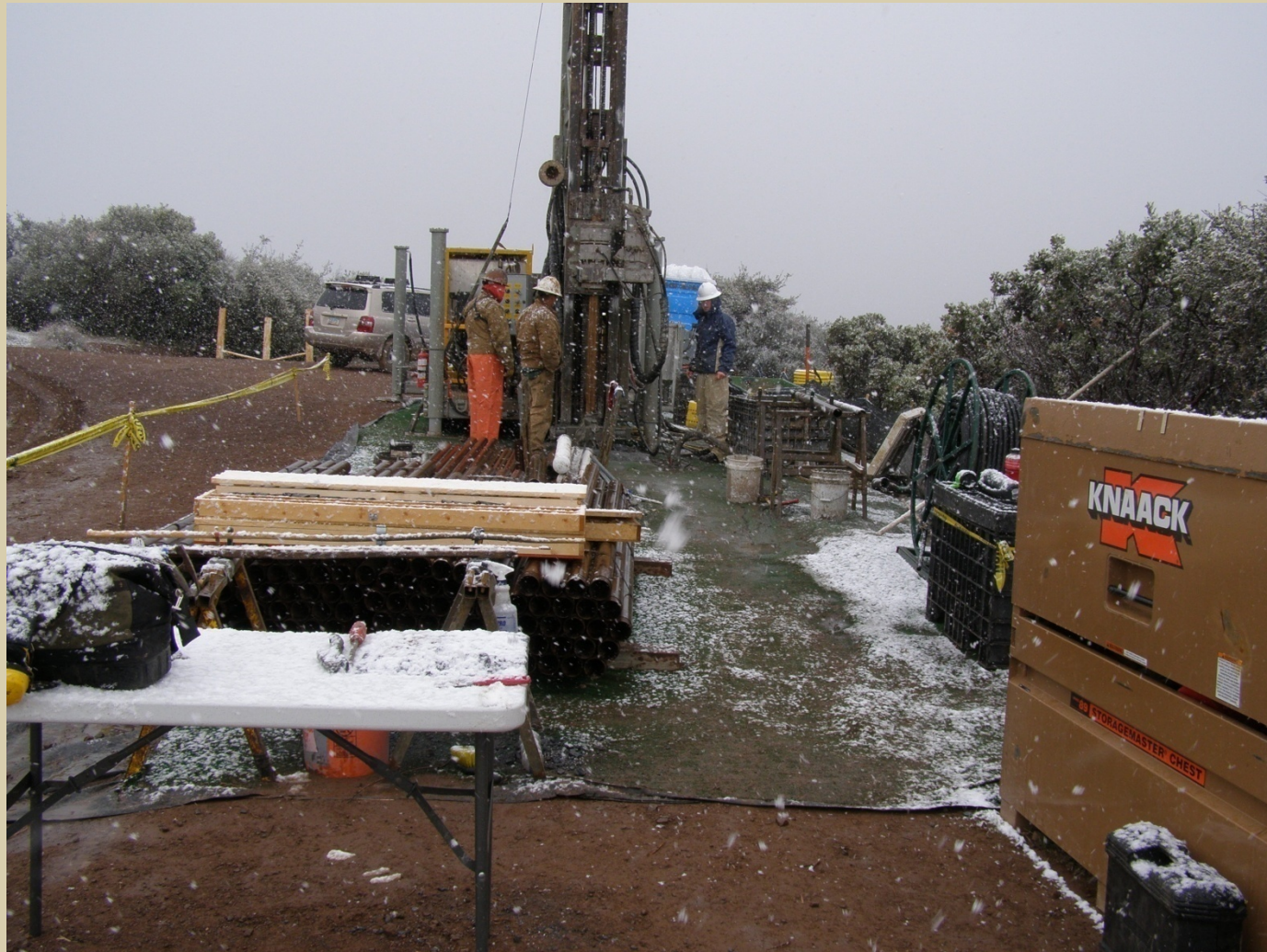
CPA – C-2



Helicopter Access



Weather



CPA C-2 Coring Site



Optical Televiewer



Transducer Installation



Discussion

