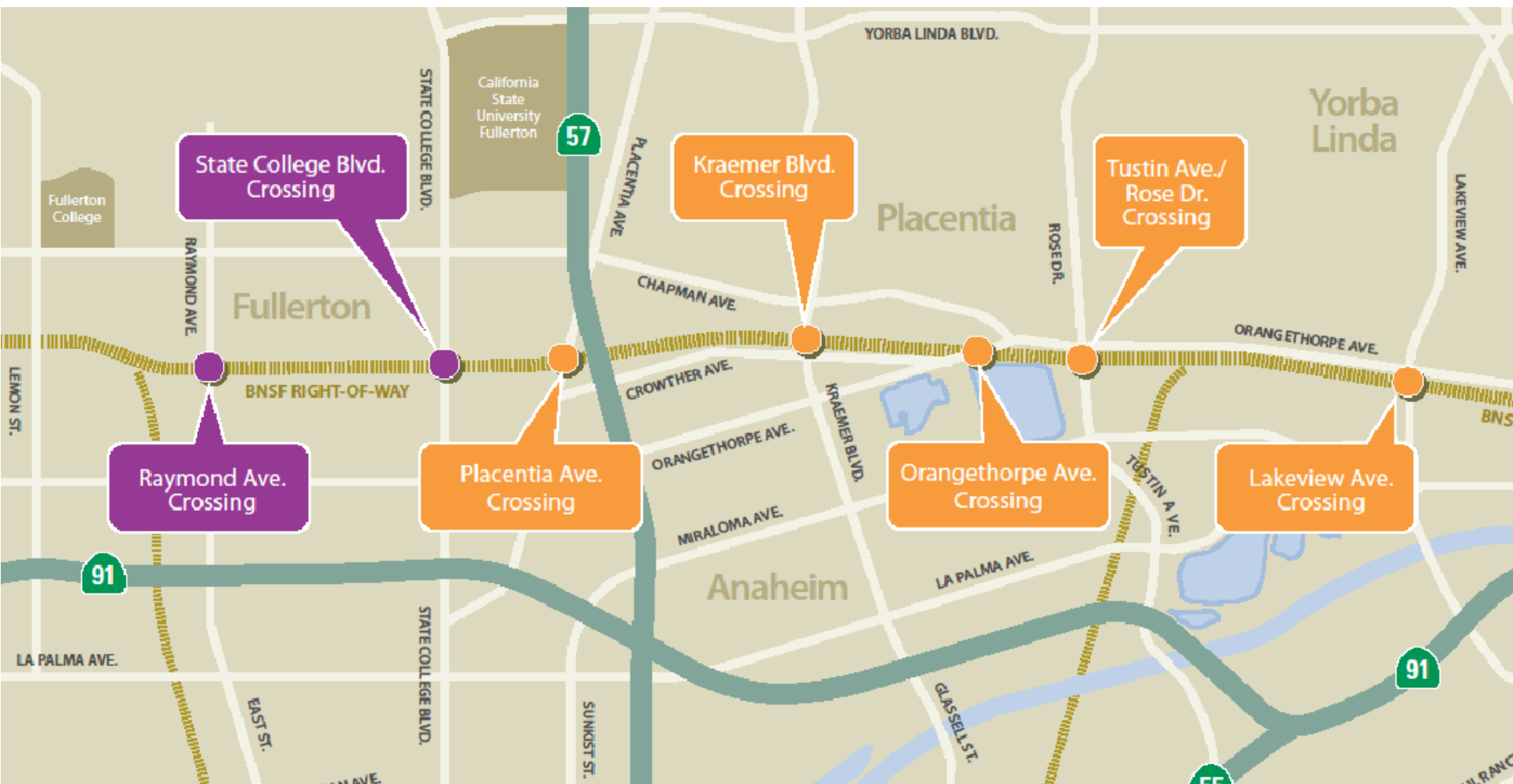


**Adopt Resolutions of Necessity for the  
Raymond Avenue  
Railroad Grade Separation Project**

# Grade Separation Project Locations



# Grade Separation Projects Overview





# Raymond Avenue Grade Separation



# Raymond Avenue Grade Separation



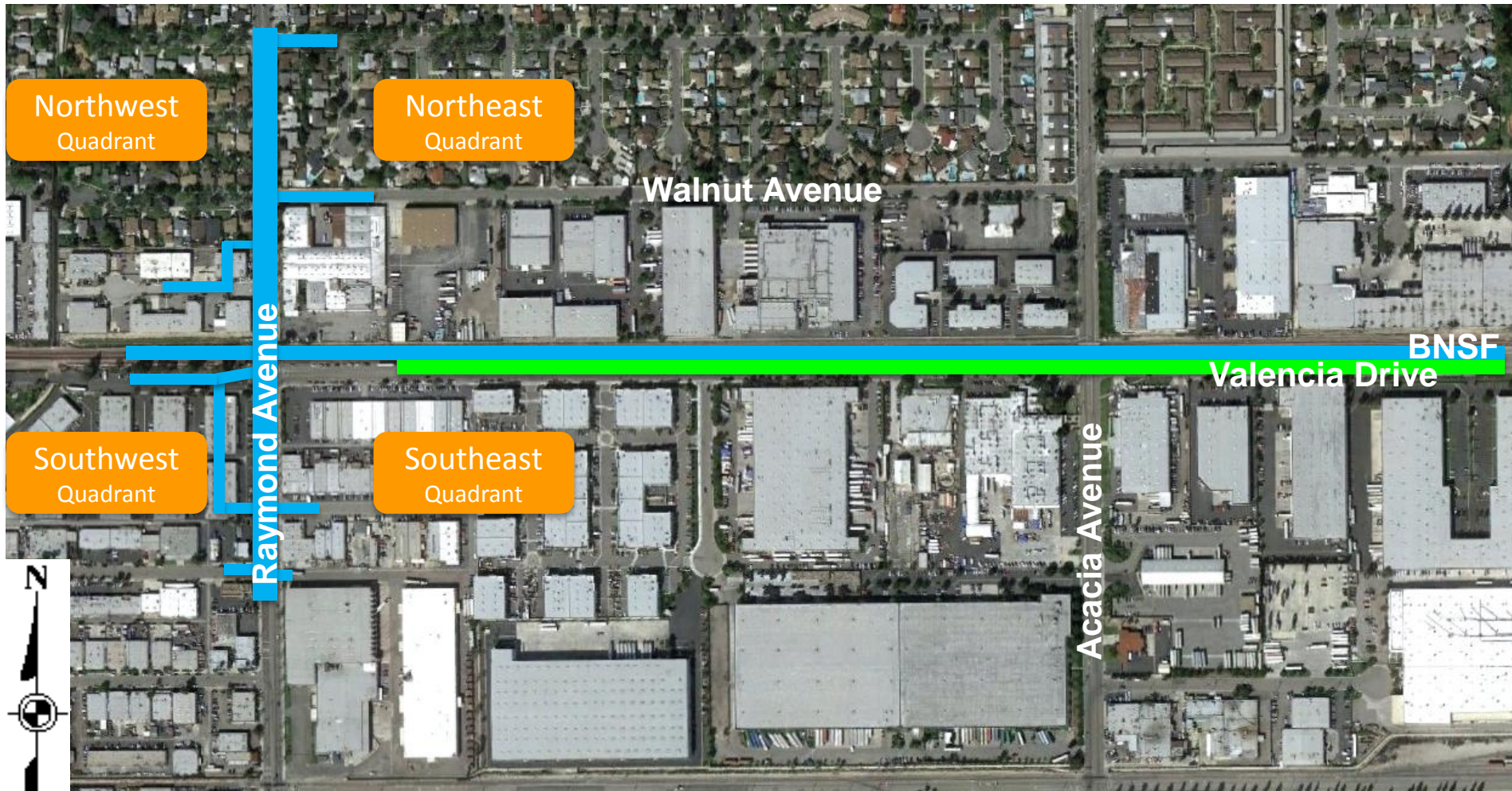


# Raymond Avenue Grade Separation Project Design



Not to Scale,  
For Presentation Purposes Only

# Project Impact Area

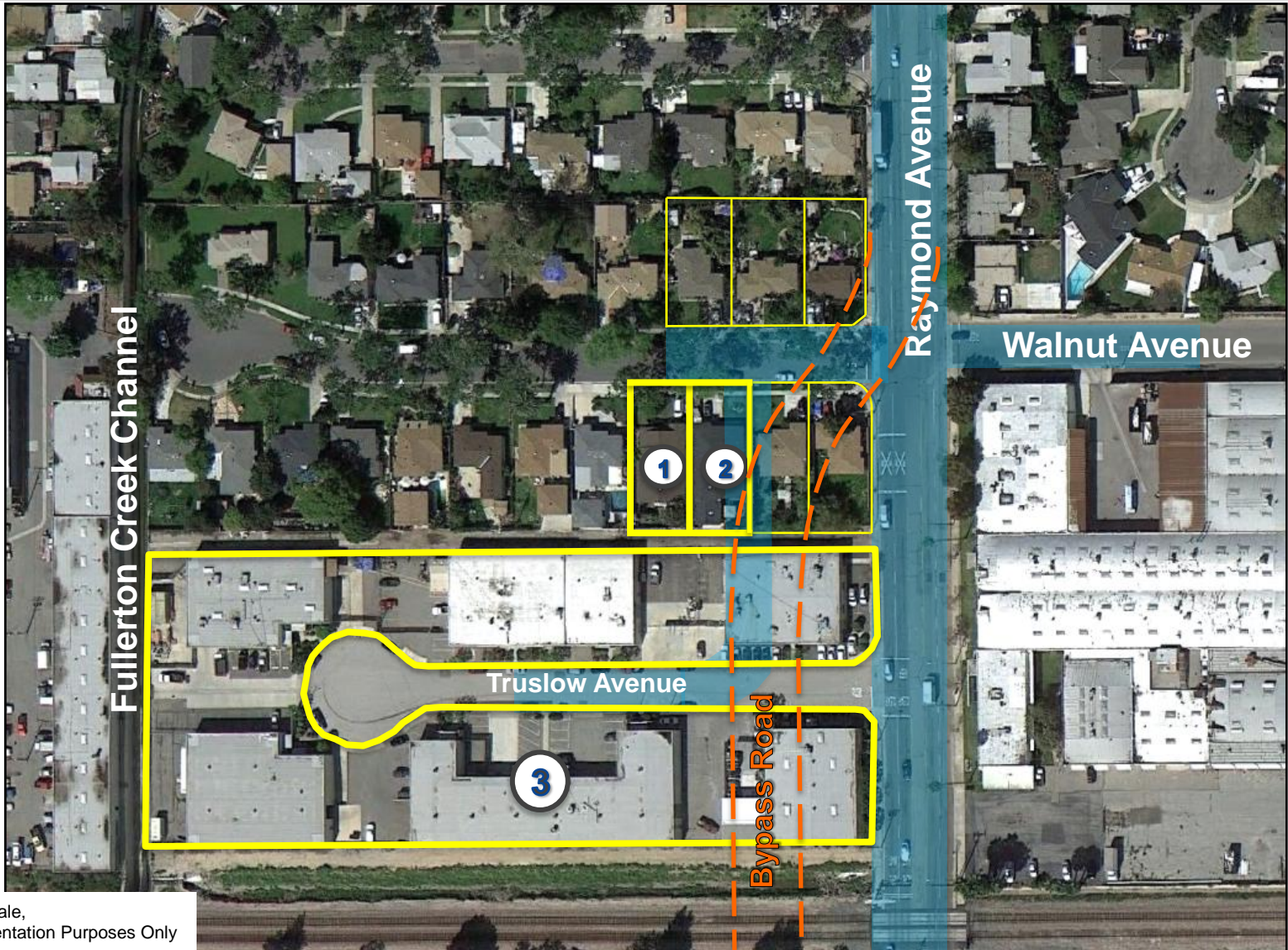


Not to Scale,  
For Presentation Purposes Only

 Continuous Temporary BNSF Track (Shoofly)



# Northwest Quadrant



Not to Scale,  
For Presentation Purposes Only



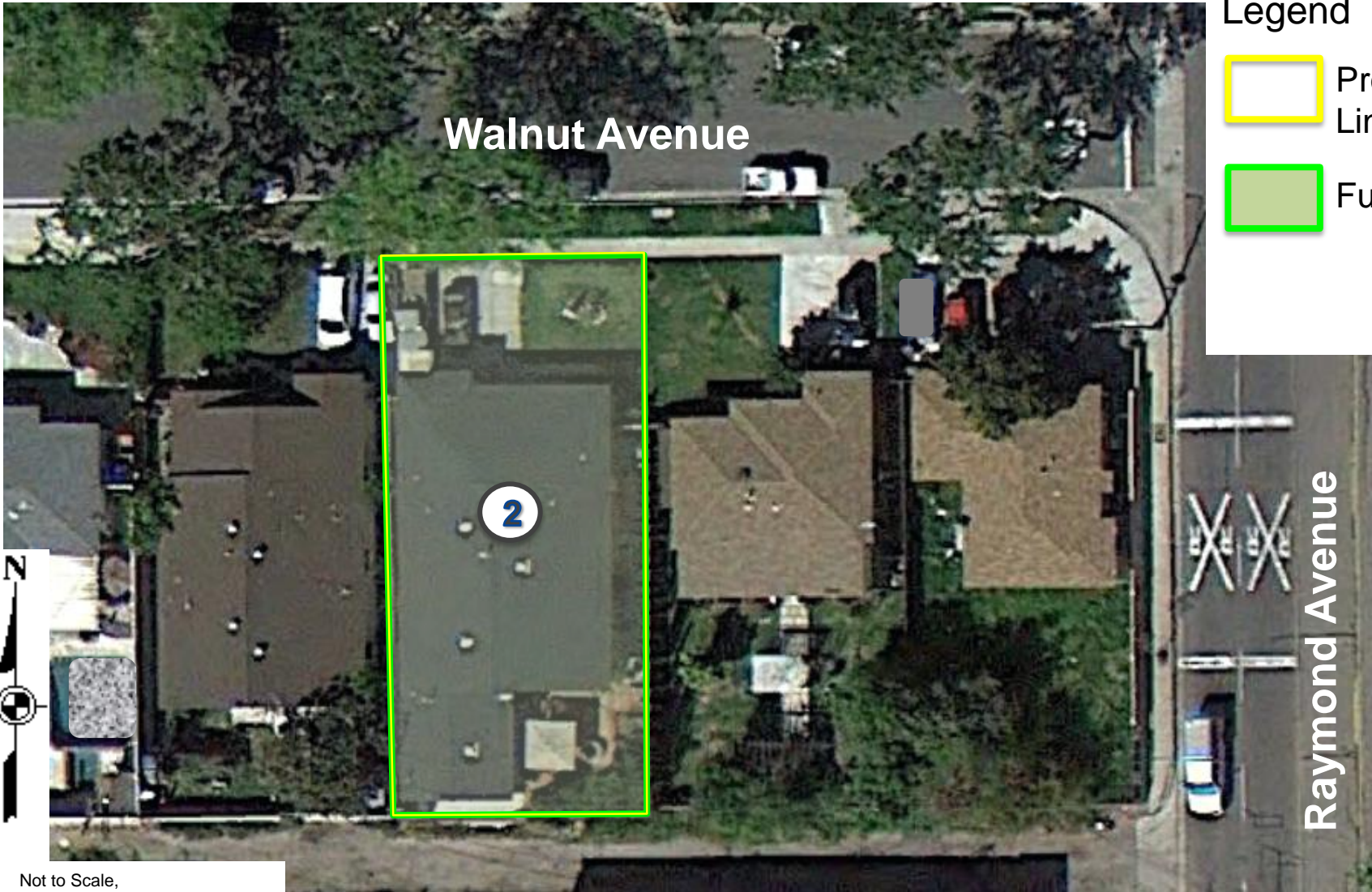
# Resolution of Necessity No. 2013-110



Not to Scale,  
For Presentation Purposes Only



# Resolution of Necessity No. 2013-111



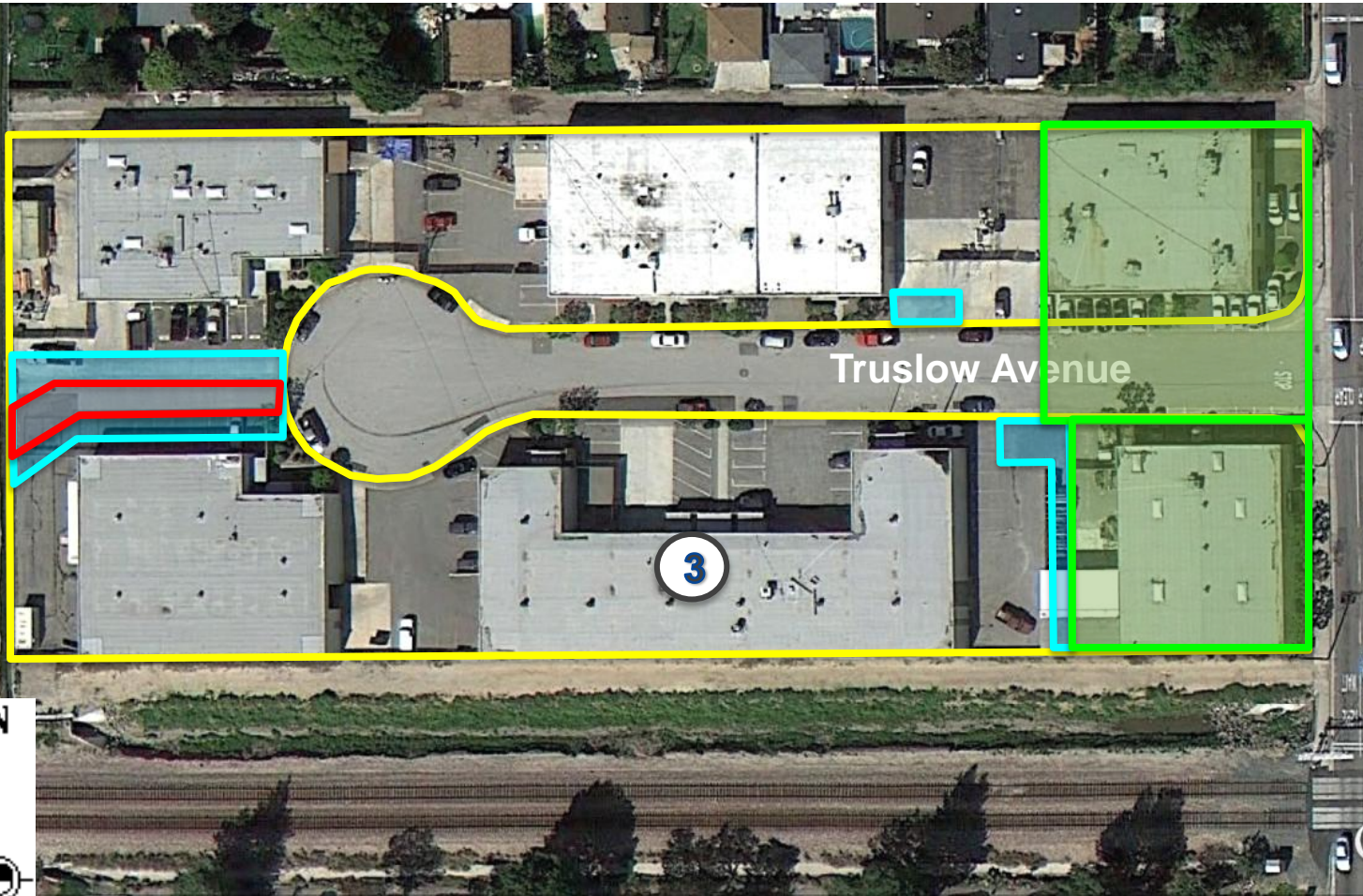
Legend

Property Line





Full Fee



# Resolution of Necessity No. 2013-112

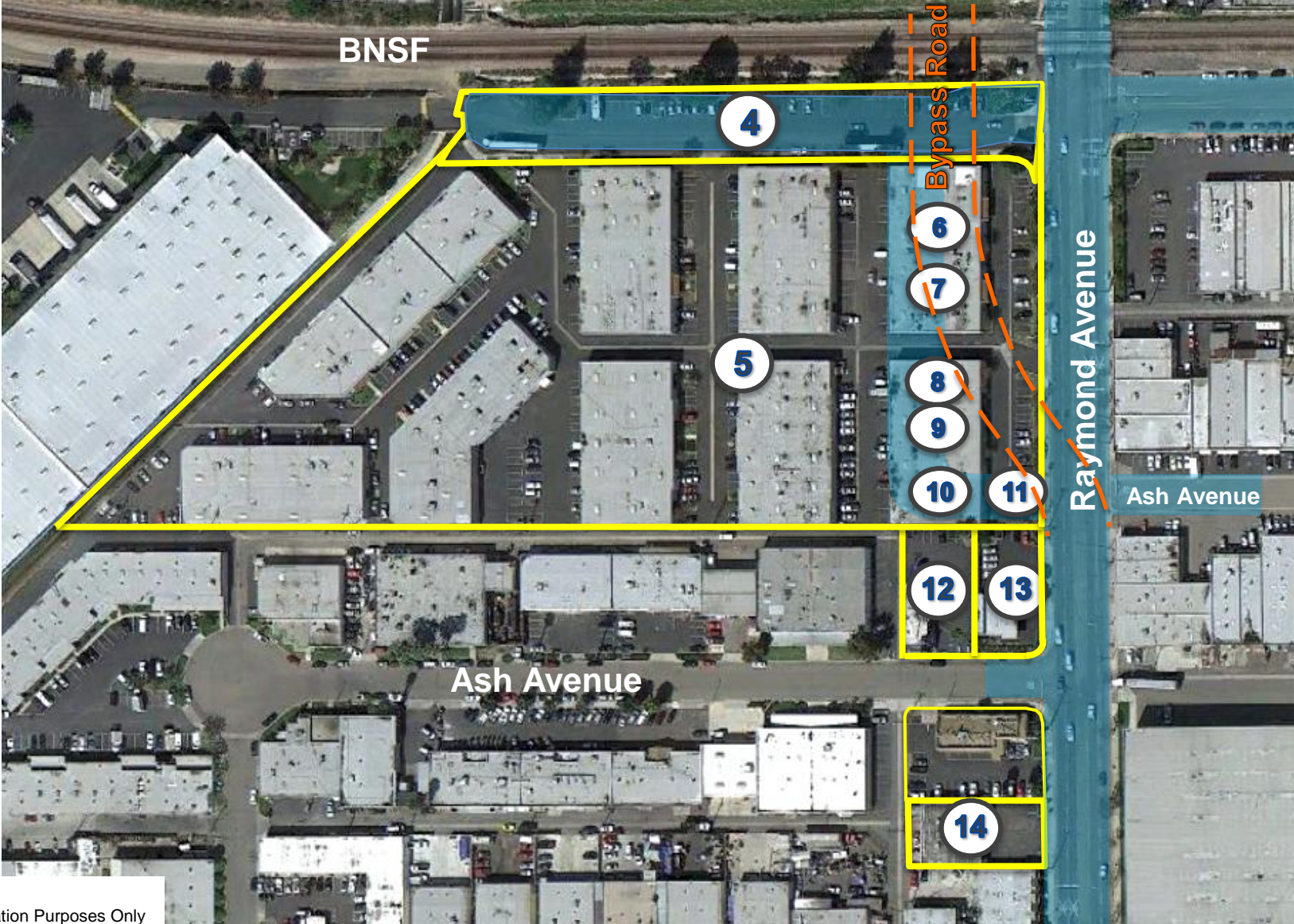


## Legend

-  Property Line
-  Partial Fee
-  Temporary Construction Easement
-  Public Utility Easement



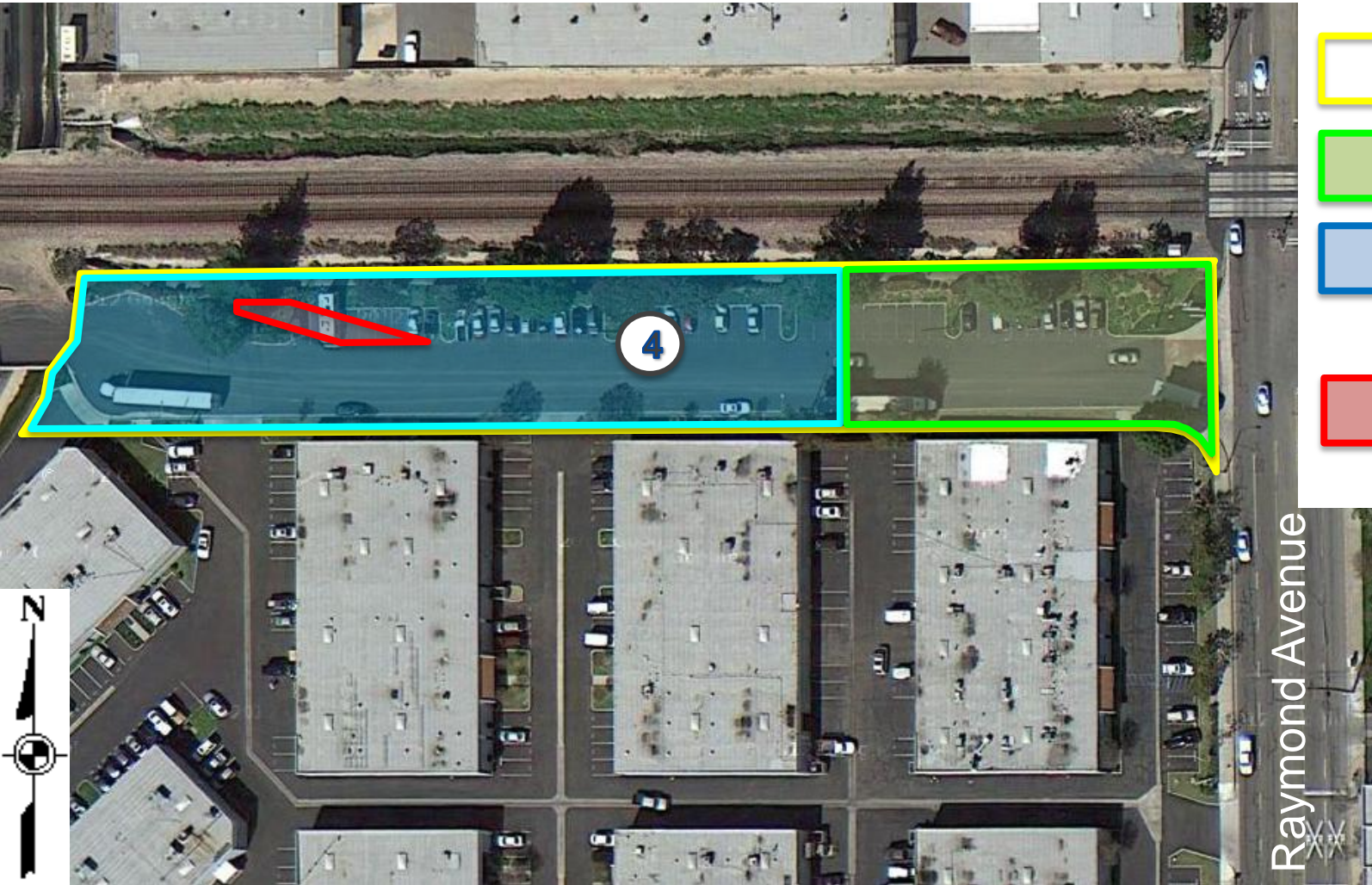
# Southwest Quadrant







Not to Scale,  
For Presentation Purposes Only



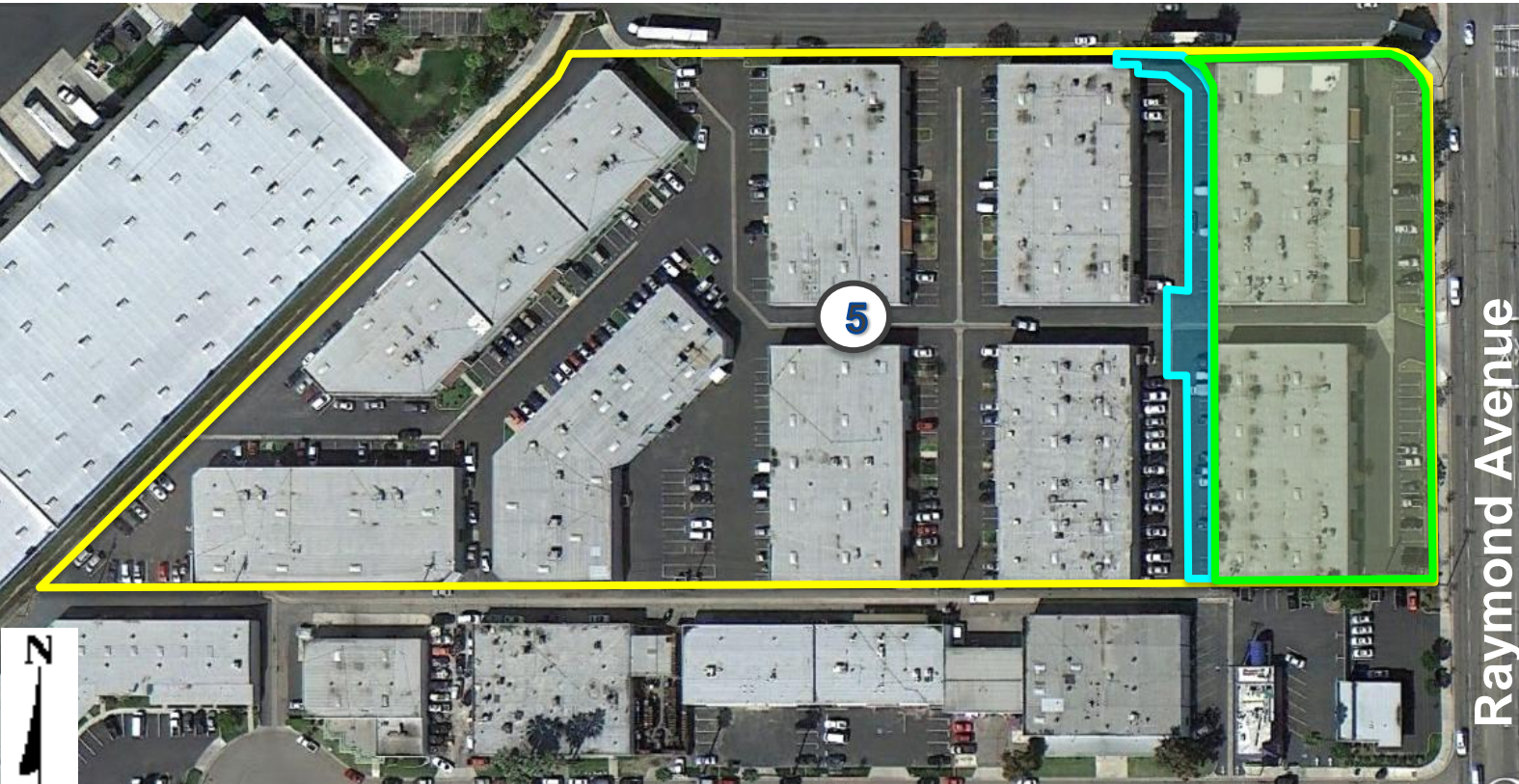
# Resolution of Necessity No. 2013-113






## Legend

-  Property Line
-  Partial Fee
-  Temporary Construction Easement
-  Public Utility Easement

# Resolution of Necessity No. 2013-114



## Legend

-  Property Line
-  Partial Fee
-  Temporary Construction Easement



Not to Scale,  
For Presentation Purposes Only





# Resolutions of Necessity Nos.

2013-115  
2013-116  
2013-117

2013-118  
2013-119  
2013-120



Condominium  
Units / Billboard



-  Property Line
-  Full Fee

Raymond Avenue

# Resolution of Necessity No. 2013-121



## Legend





-  Property Line
-  Temporary Construction Easement



# Resolution of Necessity No. 2013-122





## Legend

-  Property Line
-  Partial Fee
-  Temporary Construction Easement
-  Subsurface Easement

# Resolution of Necessity No. 2013-123



## Legend

-  Property Line
-  Temporary Construction Easement



# Northeast Quadrant





# Resolution of Necessity No. 2013-124



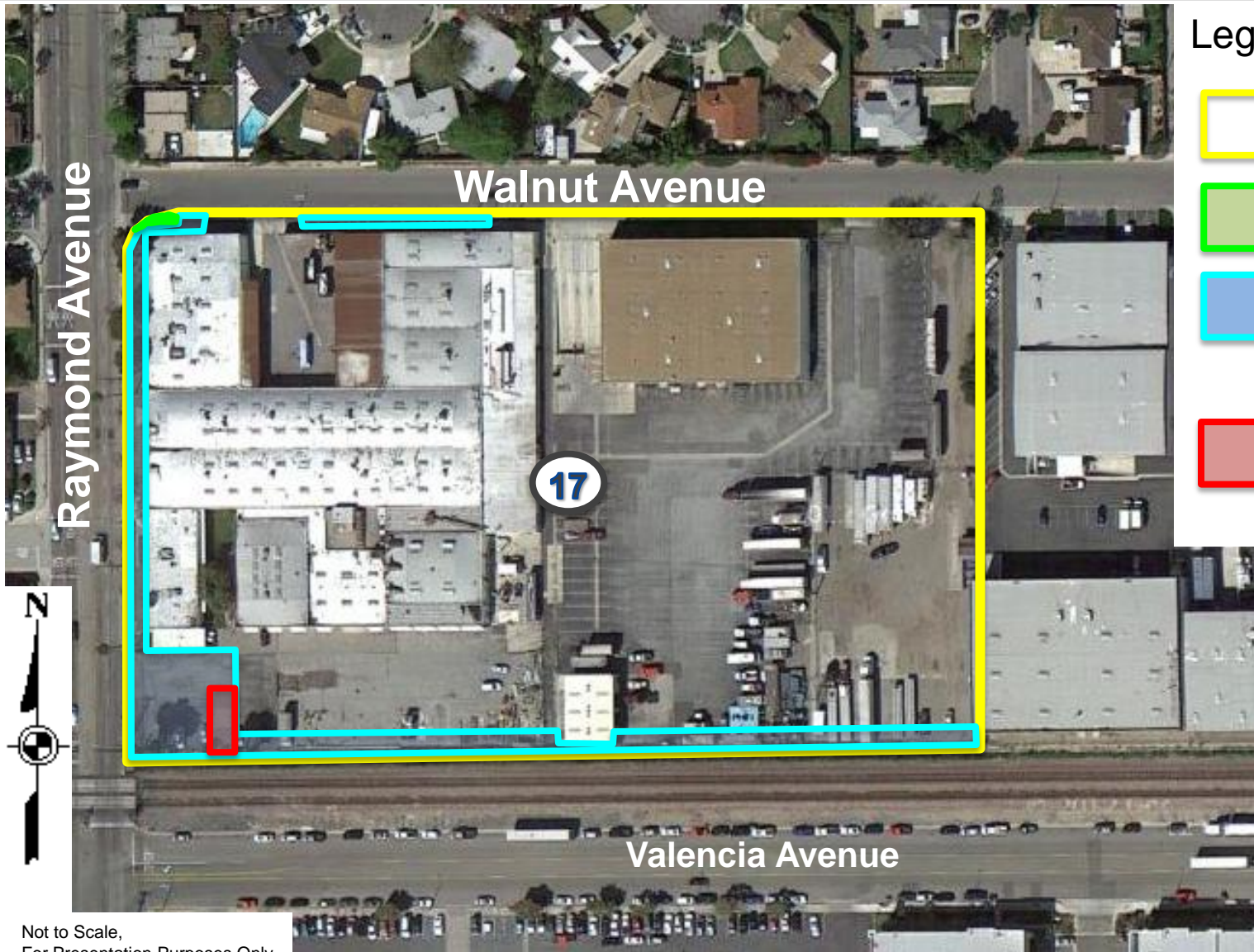
Not to Scale,  
For Presentation Purposes Only







# Resolution of Necessity No. 2013-155



# Resolution of Necessity No. 2013-125



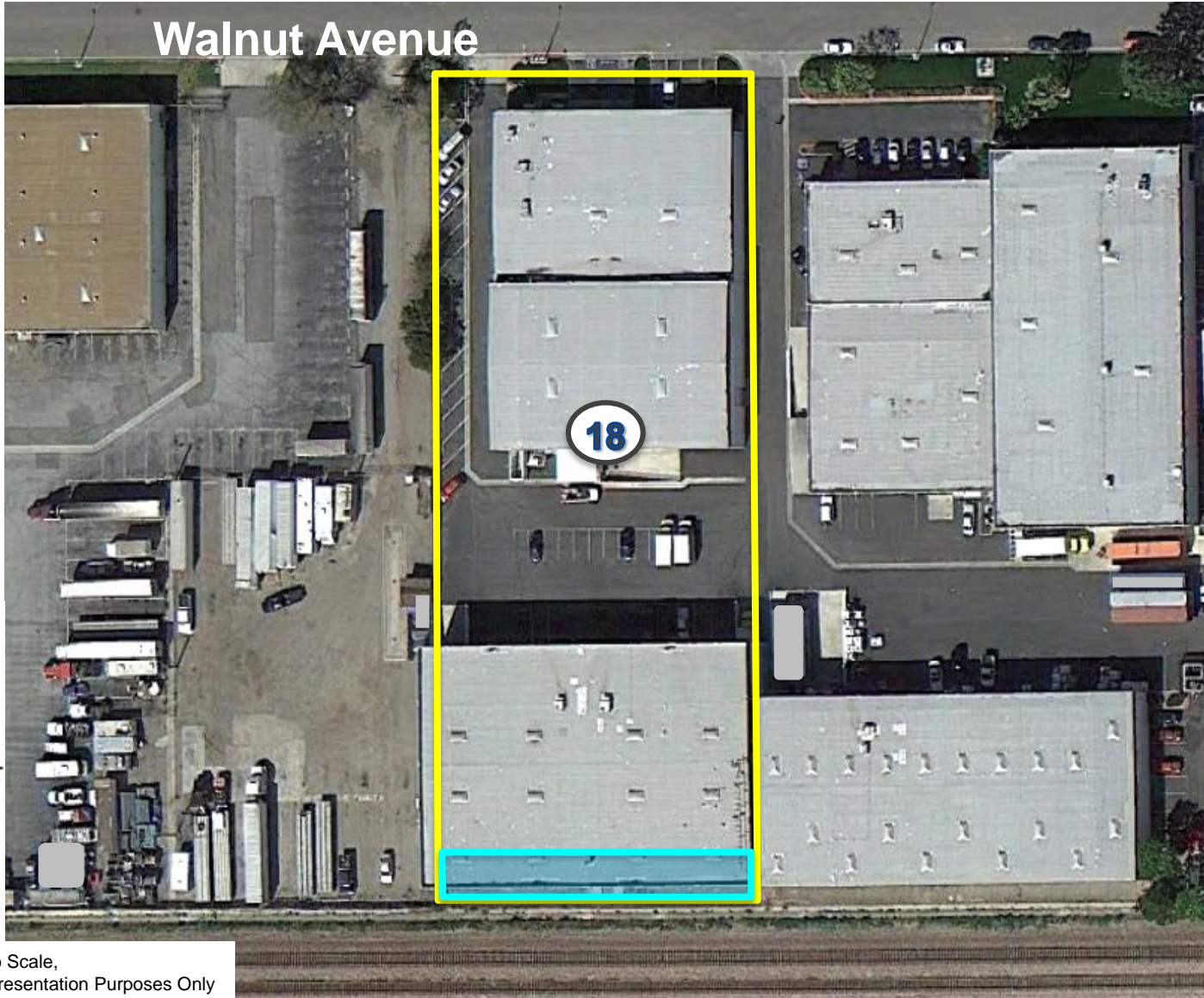
## Legend

-  Property Line
-  Partial Fee
-  Temporary Construction Easement
-  Public Utility Easement



# Resolution of Necessity No. 2013-126

Walnut Avenue



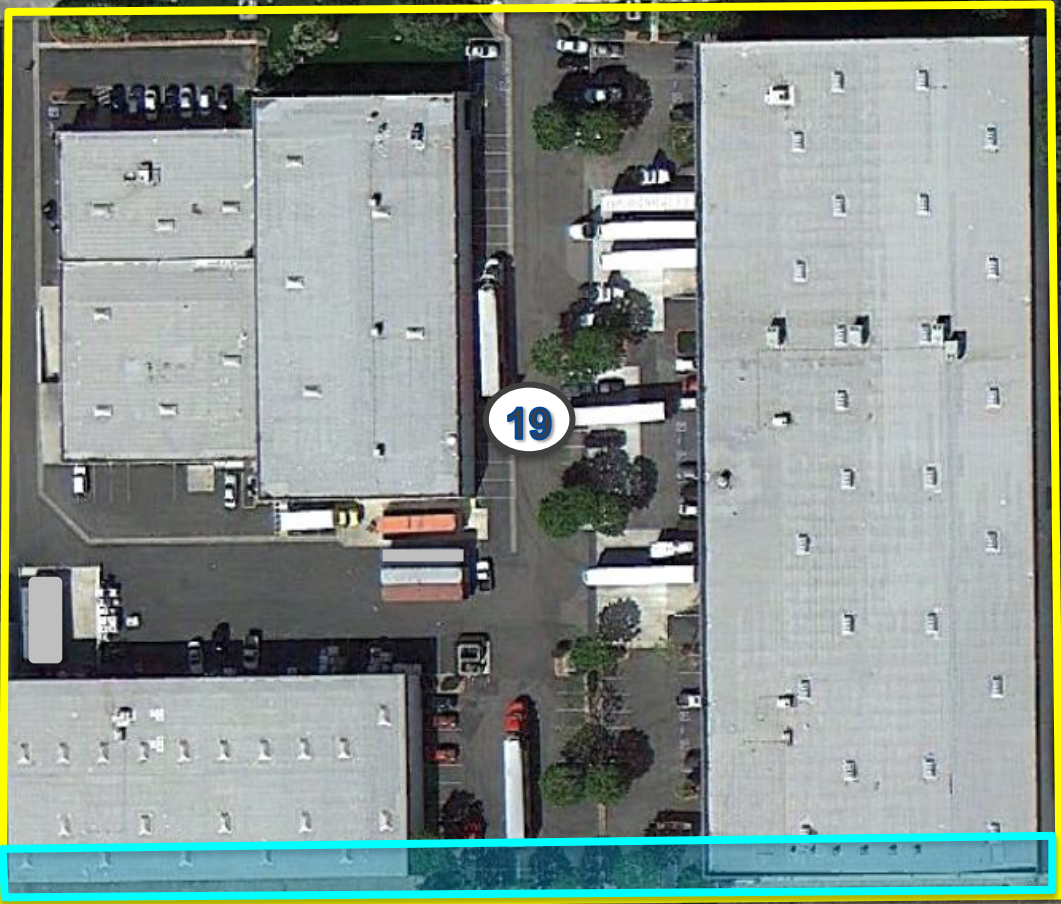
Legend

 Property Line

 Temporary Construction Easement

# Resolution of Necessity No. 2013-127

Walnut Avenue



Legend



Property Line



Temporary Construction Easement





# Resolution of Necessity No. 2013-128

Walnut Avenue

Legend

 Property Line

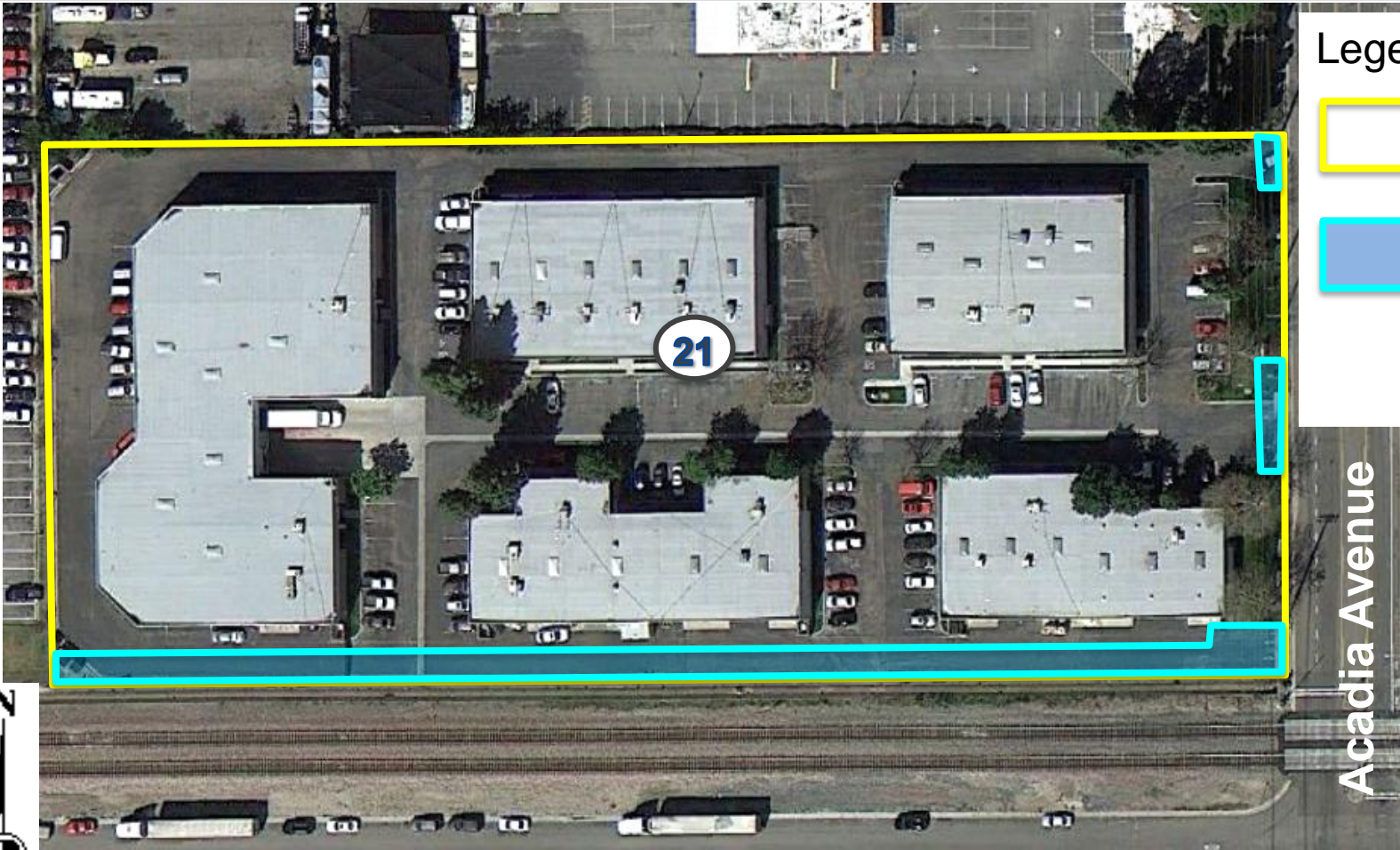
 Temporary Construction Easement

20





Not to Scale,  
For Presentation Purposes Only

# Resolution of Necessity No. 2013-129



### Legend

-  Property Line
-  Temporary Construction Easement

Acadia Avenue







# Resolution of Necessity No. 2013-130





## Legend

-  Property Line
-  Temporary Construction Easement

# Resolution of Necessity No. 2013-131

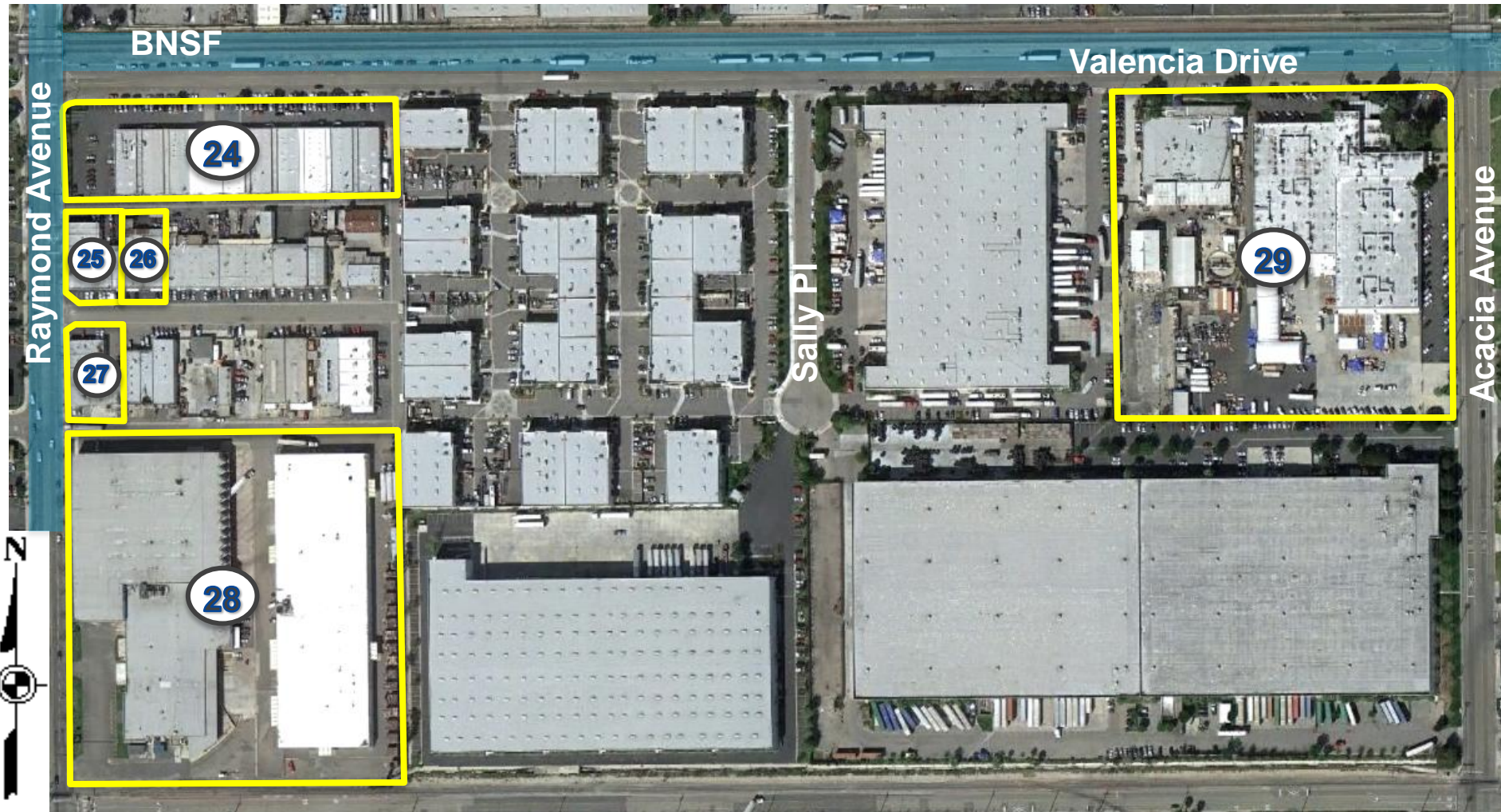


## Legend

-  Property Line
-  Temporary Construction Easement



# Southeast Quadrant








# Resolution of Necessity No. 2013-132

Raymond Avenue

Valencia Avenue

24

## Legend

-  Property Line
-  Temporary Construction Easement
-  Public Utility Easement







# Resolution of Necessity No. 2013-133



## Legend



-  Property Line
-  Full Fee

Not to Scale,  
For Presentation Purposes Only

# Resolution of Necessity No. 2013-134



## Legend

-  Property Line
-  Temporary Construction Easement



Ash Avenue



Not to Scale,  
For Presentation Purposes Only



# Resolution of Necessity No. 2013-135



## Legend

-  Property Line
-  Temporary Construction Easement





Not to Scale,  
For Presentation Purposes Only

# Resolution of Necessity No. 2013-136



## Legend



-  Property Line
-  Temporary Construction Easement



# Resolution of Necessity No. 2013-137



## Legend

-  Property Line
-  Temporary Construction Easement

# Summary

1. **The public interest and necessity require the proposed project.**
2. **The proposed project is planned in a manner that will be most compatible with the greatest public good and the least private injury.**
3. **The property is necessary for the proposed project.**
4. **An offer to acquire the property in compliance with Government Code Section 7267.2 has been made to the owner of record.**