



# West County Connectors



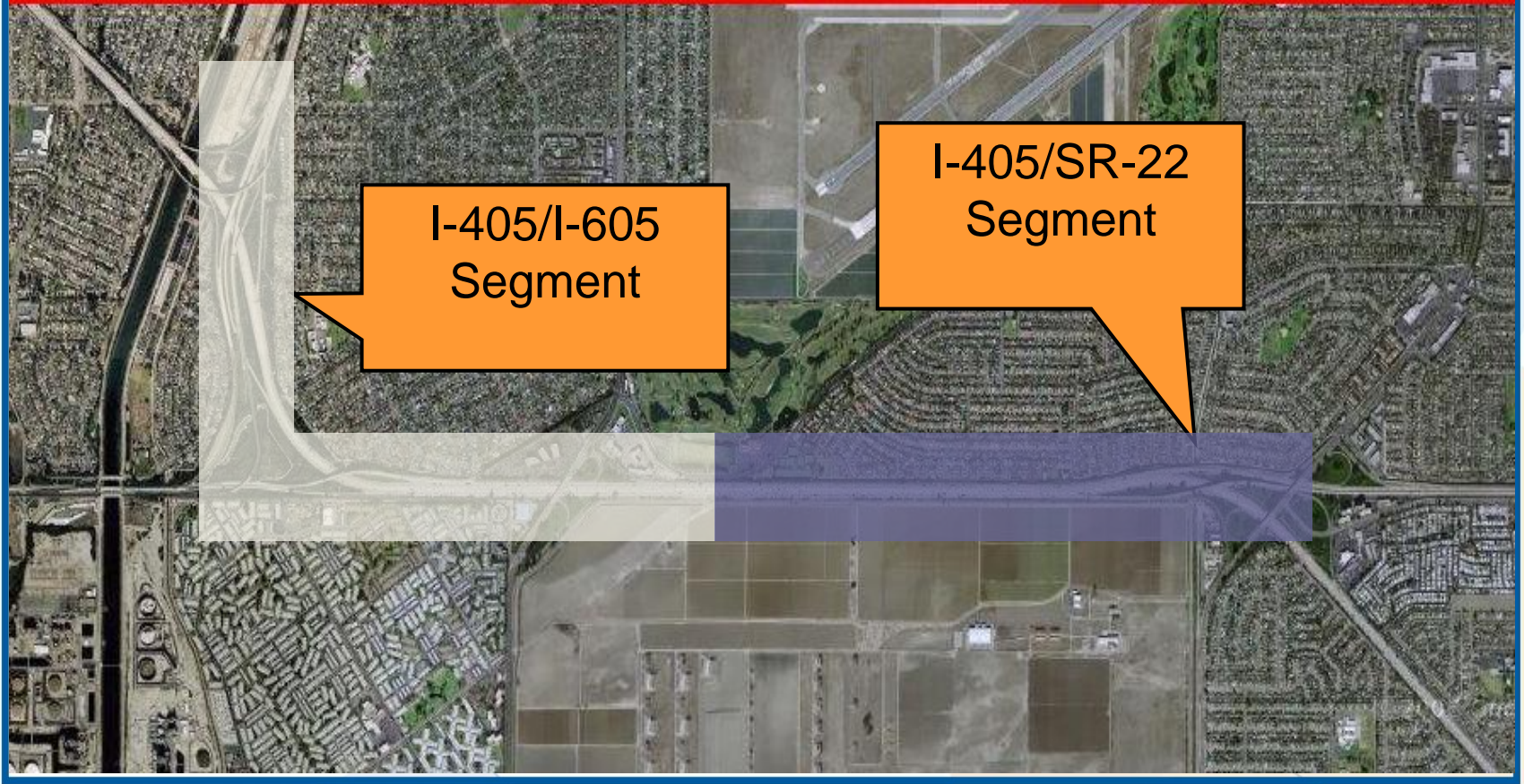
# I-405 and I-605 Corridor







# West County Connectors





# Project Schedule

## East Segment

Construction Contract Approval - June 25, 2010

Begin Construction - Sept. 7, 2010

## West Segment

Construction Contract Approval - Nov. 2010

Begin Construction - Jan. 2011



# Roles and Responsibilities

## OCTA

- Project Design (COMPLETE)
- Construction Management Consultant
- Community Outreach

## Caltrans

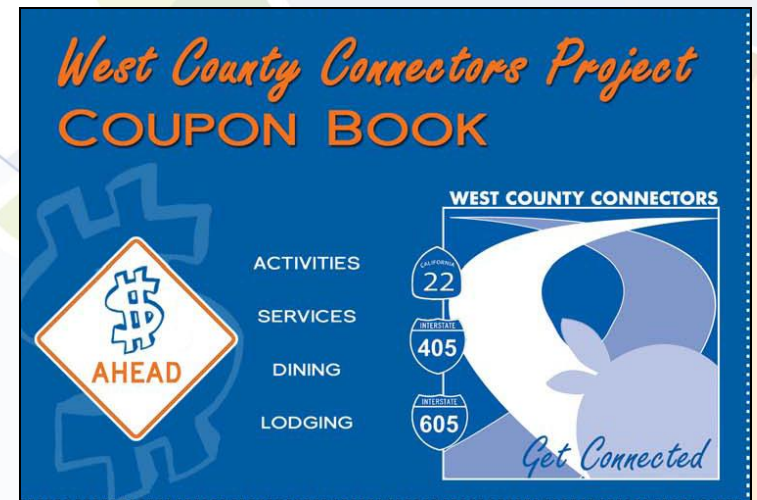
- Design Independent Quality Assurance
- Construction Administration





# Community Relations

- City Council & Traffic Commission Briefings
- Open Houses/Neighborhood Meetings
- Weekly Construction Email Alerts
- Stakeholder Working Group
- Door-to-Door Business Visits
- Quarterly E-Newsletters
- Coupon Book
- Media Relations
- Social Media
- Website



# Web Demo



ORANGE COUNTY TRANSPORTATION AUTHORITY

Home | Contact Us | Font Size A A A

About OCTA

Bus

Train

Freeways & Streets

91 Express Lanes

Projects & Programs

Share the Ride

Home → Highways & Streets → Freeways West County Connectors

Overview

Virtual Open House

Construction Alerts

Detours

Project Schedule and Funding

Get Connected



Click here to sign-up for closure and detour alerts!

## West County Connectors - Overview

The West County Connectors Project was initiated by the Orange County Transportation Authority (OCTA) and the California Department of Transportation (Caltrans) to link high occupancy vehicle (HOV) lanes/carpool lanes on the San Diego Freeway (I-405) with those on the Garden Grove Freeway (SR-22) and San Gabriel River Freeway (I-605) to create a seamless HOV connection amongst the three freeways. The project traverses the cities of Garden Grove, Westminster, Seal Beach, Los Alamitos, Long Beach and the community of Rossmore.

### The project also will:

- construct two direct HOV connectors
- add a second HOV lane in each direction on I-405 between the SR-22 and the I-605
- eliminate HOV users weaving across general purpose lanes to switch to and from HOV lanes.
- reconstruct on- and off-ramps
- construct soundwalls and retaining walls at various locations
- add landscaping and enhance aesthetic elements.

### Project Map

Click on the red markers and open house icons for additional project information.



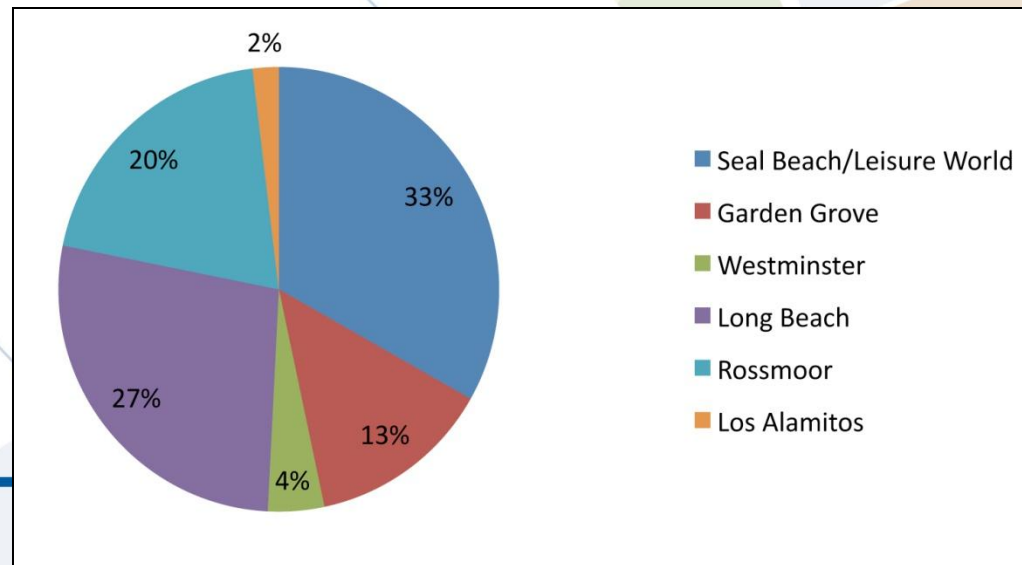


# WCC Open Houses

## Feb. 2008 to Dec. 2010

Open Houses 30  
Total Attendees 1,128

Attendees by City







# 7<sup>th</sup> Street Connector Closure

- Construction Alerts
- Print, Online, and Social Media
- Traffic Reporters
- CSULB Students, Faculty, and Staff
- Veterans Affairs Medical Center Patients, Staff, and Visitors
- Bus Operations Coordination
- Emergency Services Coordination





# Outreach Highlights

## Feb. 2008 to Dec. 2010

Email Database	4,033
Door Hangers	140,000
Construction Alerts	26
Calls	200
Emails	400
Media Stories	159
Facebook Fans	374
Twitter Followers	293

CONSTRUCTION ALERT

**WB SR-22 Valley View St. On-Ramp 55-Hour Closure & WB SR-22 Re-Stripe, Dec. 3 - 6**

**WHAT:** The Valley View Street straight and loop on-ramps to the westbound SR-22 will be closed for 55-hours, weather permitting, from 10 p.m. on Friday, December 3 until 5 a.m. on Monday, December 6 for re-paving, re-striping, and installation of temporary traffic monitoring loops. Valley View St. will also be closed in both directions nightly.

The westbound SR-22 will be closed from Knott Street / Goldenwest Street to the northbound I-405 nightly, beginning on midnight Friday, Dec. 3. The full freeway closure is necessary to re-stripe the westbound SR-22 to make room for the bridge reinforcements on the portion of Valley View Street bridge over the SR-22. **Currently, the westbound SR-22 under the Valley View Street bridge includes three general purpose lanes and it will be reduced to two general purpose lanes this weekend, weather permitting.**

**WHEN:** Closures will occur Friday night, Dec. 3 through Monday morning, Dec. 6, with specific times listed below.

**DISCLAIMER:** Due to unforeseen operational factors or inclement weather, these dates and times may change.

55-HOUR FULL RAMP CLOSURE	Friday 12/3/10	Saturday 12/4/10	Sunday 12/5/10
<b>WB SR-22 Valley View St. loop and straight on-ramps</b> ** Full 55-hour weekend closure	✓	✓	✓
• Closed from 10 p.m., Friday Dec. 3 until 5 a.m., Monday, Dec. 6			
<b>DETOUR:</b> <ul style="list-style-type: none"> <li>• From SB Valley View St. proceed south to Westminster Blvd., right on Westminster Blvd., right on Seal Beach Blvd., proceed to NB I-405 / WB SR-22.</li> <li>• From NB Valley View St. / Bolsa Chica Rd., left on Westminster Blvd., right on Seal Beach Blvd., proceed to NB I-405 / WB SR-22.</li> </ul>			

WB SR-22 Re-Stripe	Friday night 12/3/10	Saturday night 12/4/10	Sunday night 12/5/10
<b>WB SR-22 Full Freeway Closure from Knott St. / Goldenwest St. to NB I-405</b> ** WB SR-22 to NB I-405 connector will be re-striped from 3 lanes to 2 lanes under the Valley View St. bridge	✓		
• All mainline freeway lanes closed from midnight to 7 a.m.			
<b>DETOUR:</b> <ul style="list-style-type: none"> <li>• From the WB SR-22 exit Knott St., left on Garden Grove Blvd., left on Goldenwest St., right on Westminster Blvd., right on Seal Beach Blvd. to access the NB I-405 / WB SR-22</li> </ul>			

WB SR-22 to NB I-405 Connector	Friday night 12/3/10	Saturday night 12/4/10	Sunday night 12/5/10
• Closed from midnight to 6 a.m.		✓	
• Closed from midnight to 5 a.m.			✓

**DETOUR:**

- Exit Valley View St. from the WB SR-22, left on Valley View St., right on Westminster Blvd., right on Seal Beach Blvd. to access the NB I-405 on-ramp.