



## **Construction Alert Week of August 1, 2022**

### **Construction Highlights:**

- Track installation completion activities in Segment 2. Work requires single lane closures on Santa Ana Boulevard from Raitt Street to Pacific Avenue. Detours are available. Learn more [here](#).
- Platform installation in Segment 2. Work requires eastbound lane closures on Santa Ana Boulevard from Pacific Avenue to Bristol Street. Detours are available. Learn more [here](#).
- Track installation in Segment 2. Work requires eastbound and westbound traffic to be shifted to the north side of Santa Ana Boulevard between Bristol Street and Flower Street. Learn more [here](#).
- Platform installation at Sycamore Street and French Street. Work requires lane closures on Santa Ana Boulevard from Parton Street to Mortimer Street. Learn more [here](#).
- Track installation at the Santa Ana Boulevard and Main Street intersection. Work requires a full closure of the intersection. Detours are available. Learn more [here](#).
- Track installation on Ross Street between 5th Street and 3rd Street. Work requires full closures along Ross Street. Detours are available. Learn more [here](#).
- ADA ramp construction, paving and track installation in Segment 4. Work requires full closures along 4th Street. Detours are available.
  - 4th Street between Broadway and Main Street is closed.
  - 4th Street and Main Street intersection is closed. Learn more [here](#).
  - 4th Street between Main Street and Bush Street is closed.

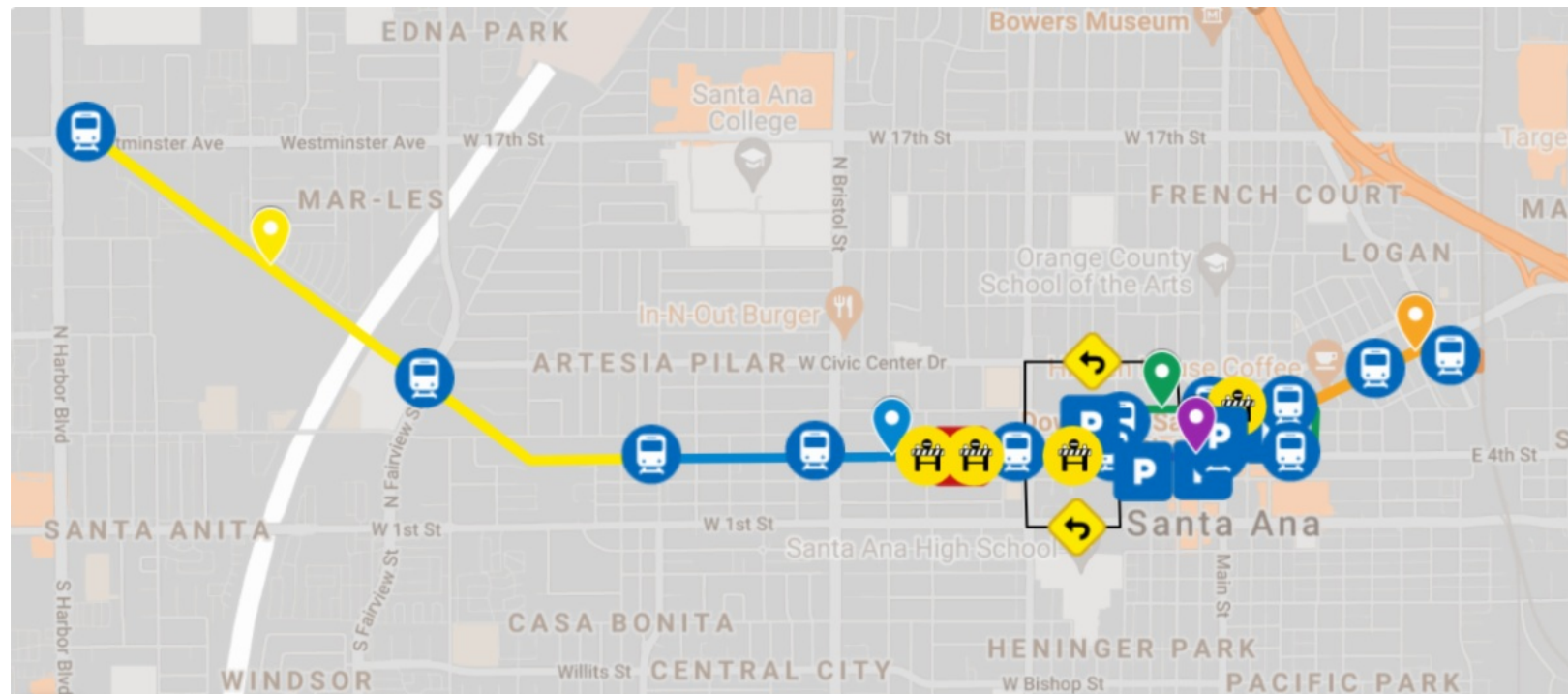
- Eastbound lanes on 4th Street from Bush Street through French Street are closed. Westbound lanes are open.
- Track installation in Segment 5. Work requires eastbound and westbound traffic to be shifted to the north side of Santa Ana Boulevard between Mortimer Street and Santiago Street. Learn more [here](#).
- Partial intersection closures are in place along Segment 5, between Mortimer Street and Poinsettia Street. Detours are available. Learn more [here](#).

*Access will be maintained for all residents and businesses. Construction activities are dependent on weather and resource availability.*

[Click here](#) for more information on track installation activities.

[Click here](#) to check out featured businesses, services and events!

**For specific work activities in your area, click on the map below.**



## Parking and Pedestrian Access in Downtown Santa Ana

Street parking on 4th Street will be limited during track construction. Several parking structures are available throughout the downtown area that offer free parking Monday through Friday, from 7 a.m. to 5 p.m. The first 2 hours of parking are free evenings and weekends:

- 310 N Birch Street
- 201 W 3rd Street
- 253 E 3rd Street
- 420 N Main Street
- 300 E 5th Street

The entrances to parking structures are accessible from 5th Street and 3rd Street.

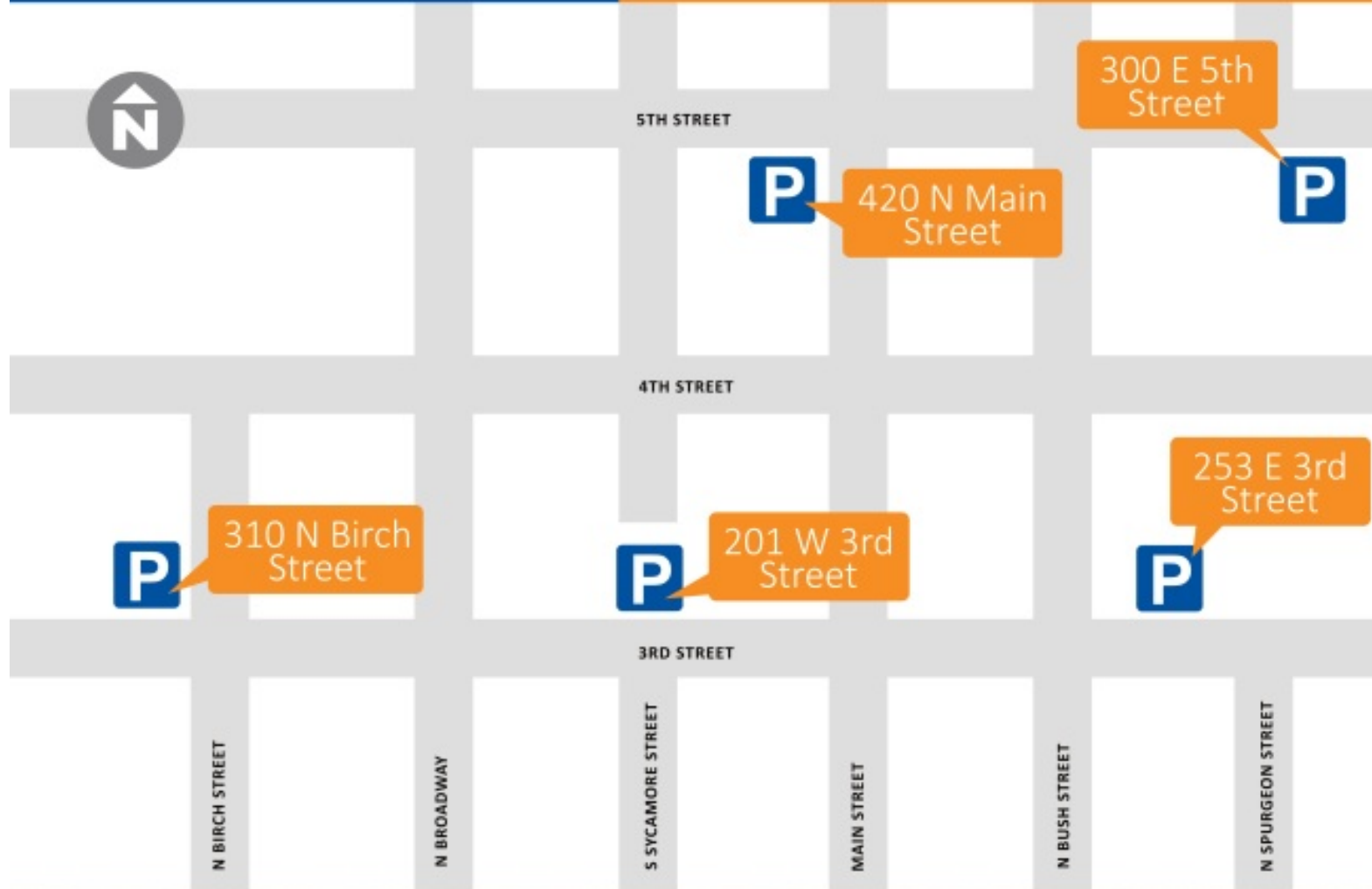
Click [here](#) for GoPro video directions from northbound I-5 to parking structures off of 3rd Street.

Click [here](#) for GoPro video directions from southbound I-5 to parking structures off of 3rd Street.

The below parking structures are available while construction is active on 4th Street. Entrances to the structures are accessible from 5th Street and 3rd Street.

# OC STREETCAR

Moving Forward



Free parking - M-F: 7 a.m. – 5 p.m.  
2 Hrs. Free - Evenings & Weekends

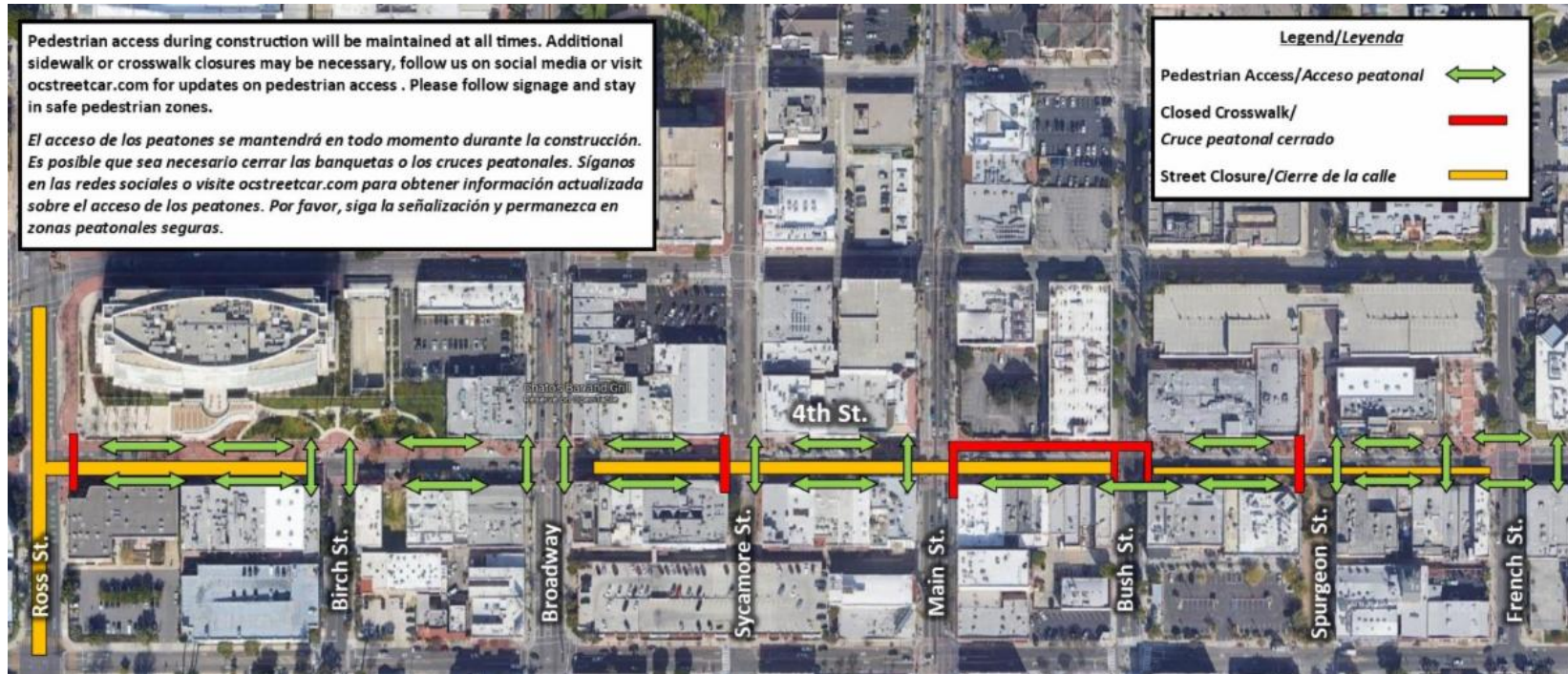
[OCStreetcar.com](http://OCStreetcar.com)





## Pedestrian Access

While track construction on 4th Street in Downtown Santa Ana is active, pedestrian access will be maintained at all times. Some closures may be in place, please follow signage to stay in pedestrian safe zones.



**OC STREETCAR** OCTA  
**EAT SHOP PLAY**  
DOWNTOWN SANTA ANA

**OC STREETCAR**  
**DEALS INSIDE**  
[OCstreetcar.com](http://OCstreetcar.com)

Icons: Fork, spoon, and knife (dining); Shopping bags (shopping); Musical note (music).

OCTA's Eat Shop Play program supports businesses located along the future OC streetcar route. Benefits to customers include special deals, invitations to community events and free parking for the first hour in nearby structures. Learn more at [octa.net/eatshopplay](http://octa.net/eatshopplay).

# OC STREETCAR

OC Streetcar construction is underway.  
For your safety, please remember:

- ✓ Do not enter fenced work areas
- ✓ Follow pedestrian detour signage
- ✓ Be aware of your surroundings when walking near work sites



## About the Project

OC Streetcar is the first modern streetcar project to be built in Orange County and will serve Santa Ana's historic and thriving downtown, which includes federal, state and local courthouses, government offices, colleges, an artists' village and a thriving restaurant scene. It will operate along a 4.15-mile route that connects the Santa Ana Regional Transportation Center (SARTC) and a new transit hub at Harbor Boulevard and Westminster Avenue in Garden Grove.

To share this e-blast, forward this [link](#)



[OCstreetcar.com](http://OCstreetcar.com)



[OCstreetcar@octa.net](mailto:OCstreetcar@octa.net)



1(844) 7GO-OCSC or  
1(844) 746-6272



[facebook.com/OCstreetcar](https://facebook.com/OCstreetcar)



[@OCstreetcar](https://twitter.com/OCstreetcar)



[@OCstreetcar](https://instagram.com/OCstreetcar)

