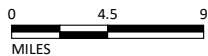


LSA

LEGEND

- Orange County
- 0 - 136
- 136-373
- 373-667
- 667-962
- 962-1267
- 1267-1618
- 1618-2138
- 2138-2885

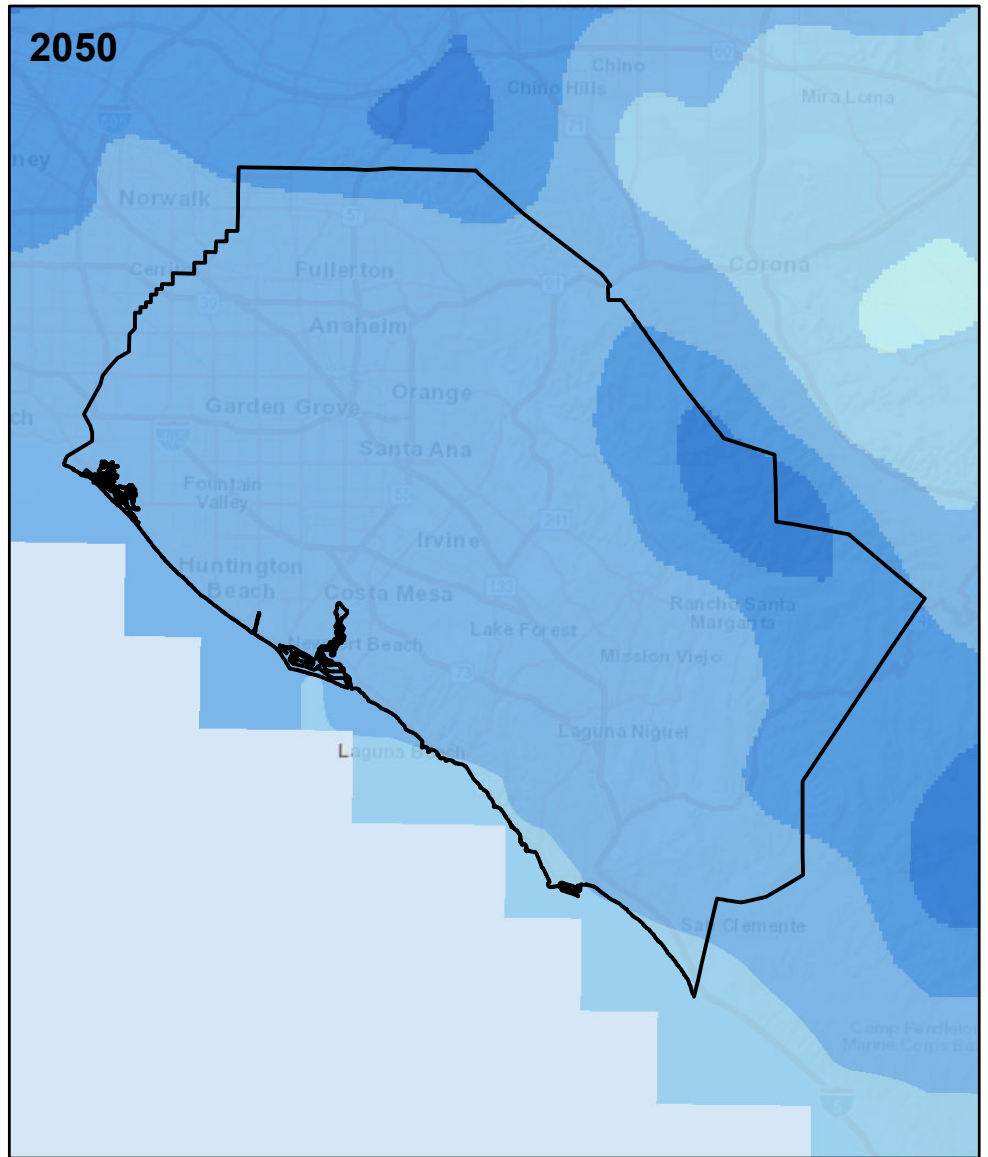
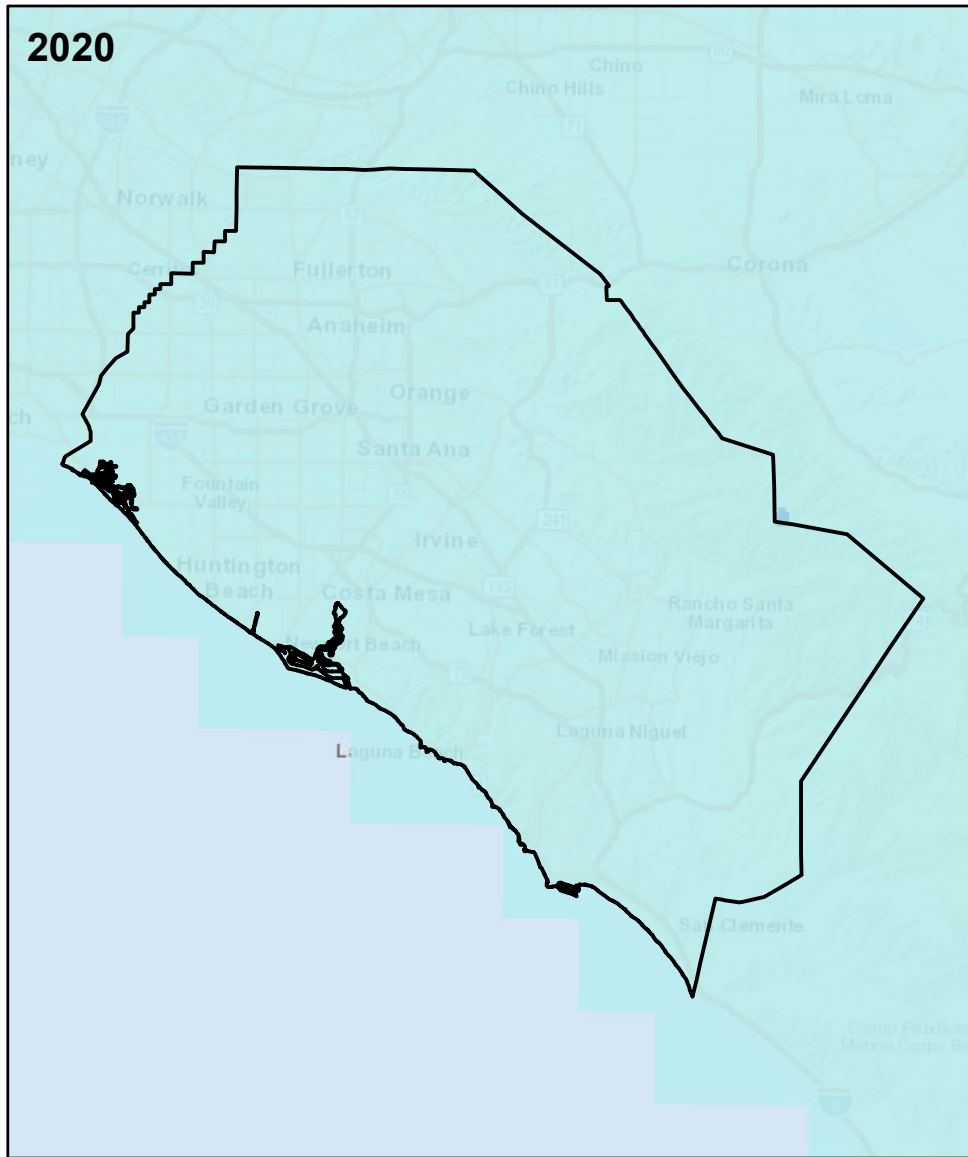


SOURCE: Esri Streetmap (2021); CalAdapt (2022)

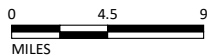
I:\OCT2101\GIS\MXD\Climate\Flooding due to Sea-Level Rise.mxd (12/2/2022)

FIGURE 2-19

OCTA Long Range Transportation Plan
 Flooding due to Sea-Level Rise



LSA



LEGEND

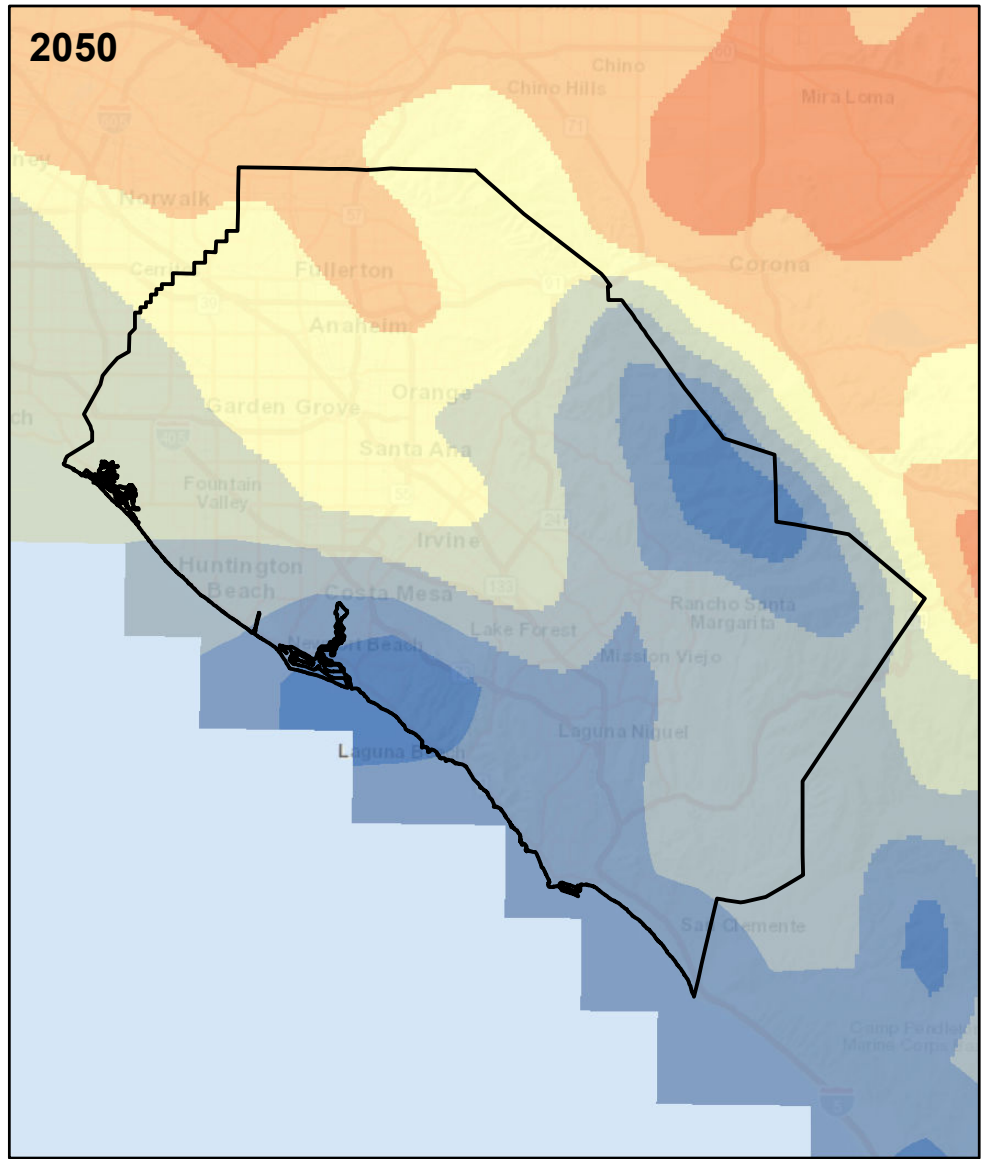
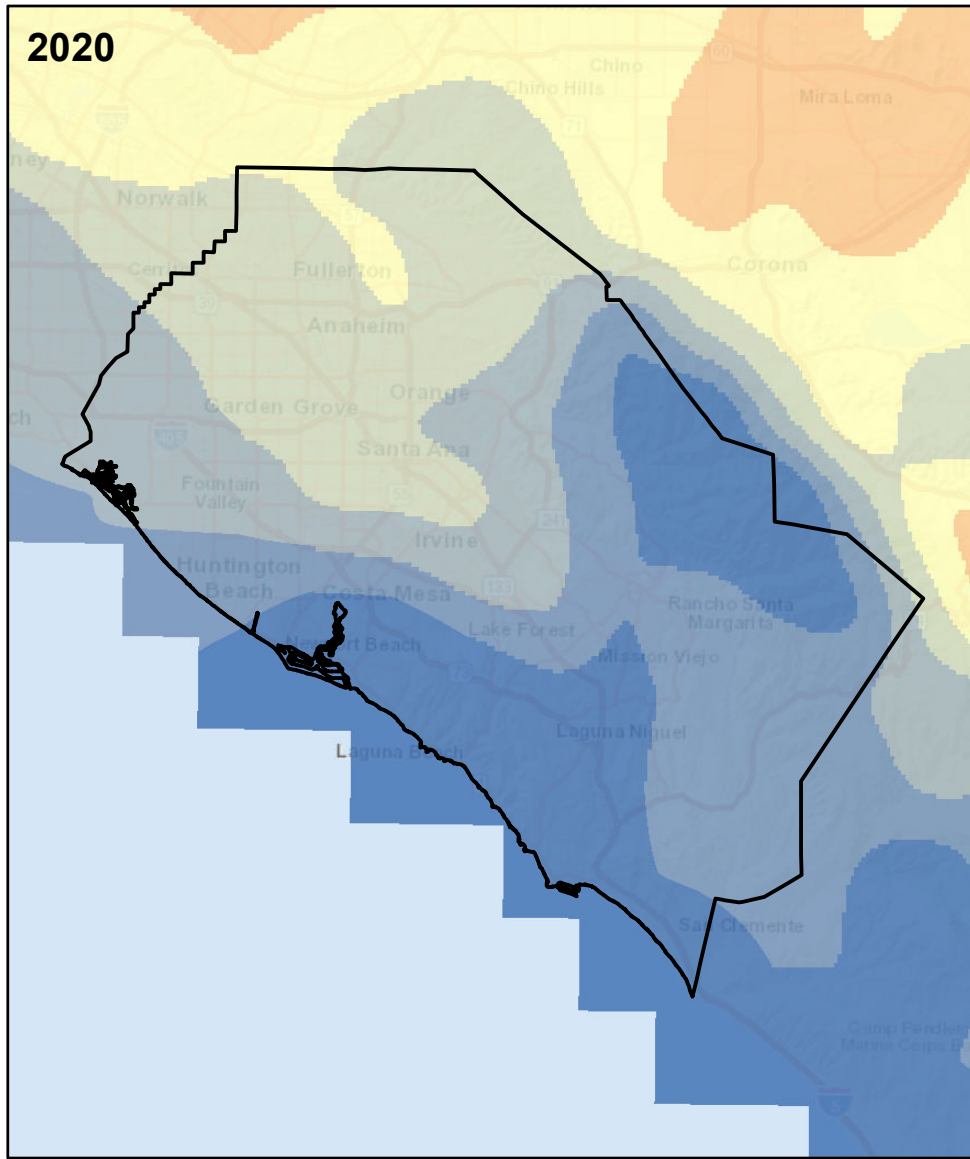
| | |
|-----------------------------------|-------|
| Orange County | 25-30 |
| Average Precipitation (inch/year) | 30-35 |
| 10-15 | 35-40 |
| 15-20 | 40-45 |
| 20-25 | 45-50 |

FIGURE 2-20

OCTA Long Range Transportation Plan
Average Precipitation

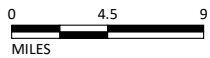
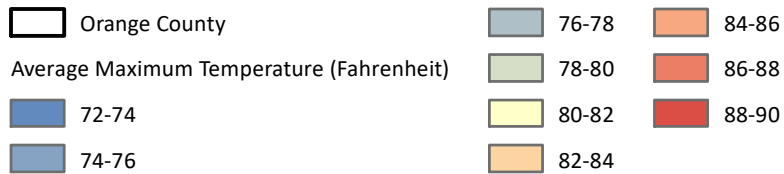
SOURCE: Esri Streetmap (2021); CalAdapt (2022)

I:\OCT2101\GIS\MXD\Climate\Average Precipitation.mxd (12/2/2022)



LSA

LEGEND

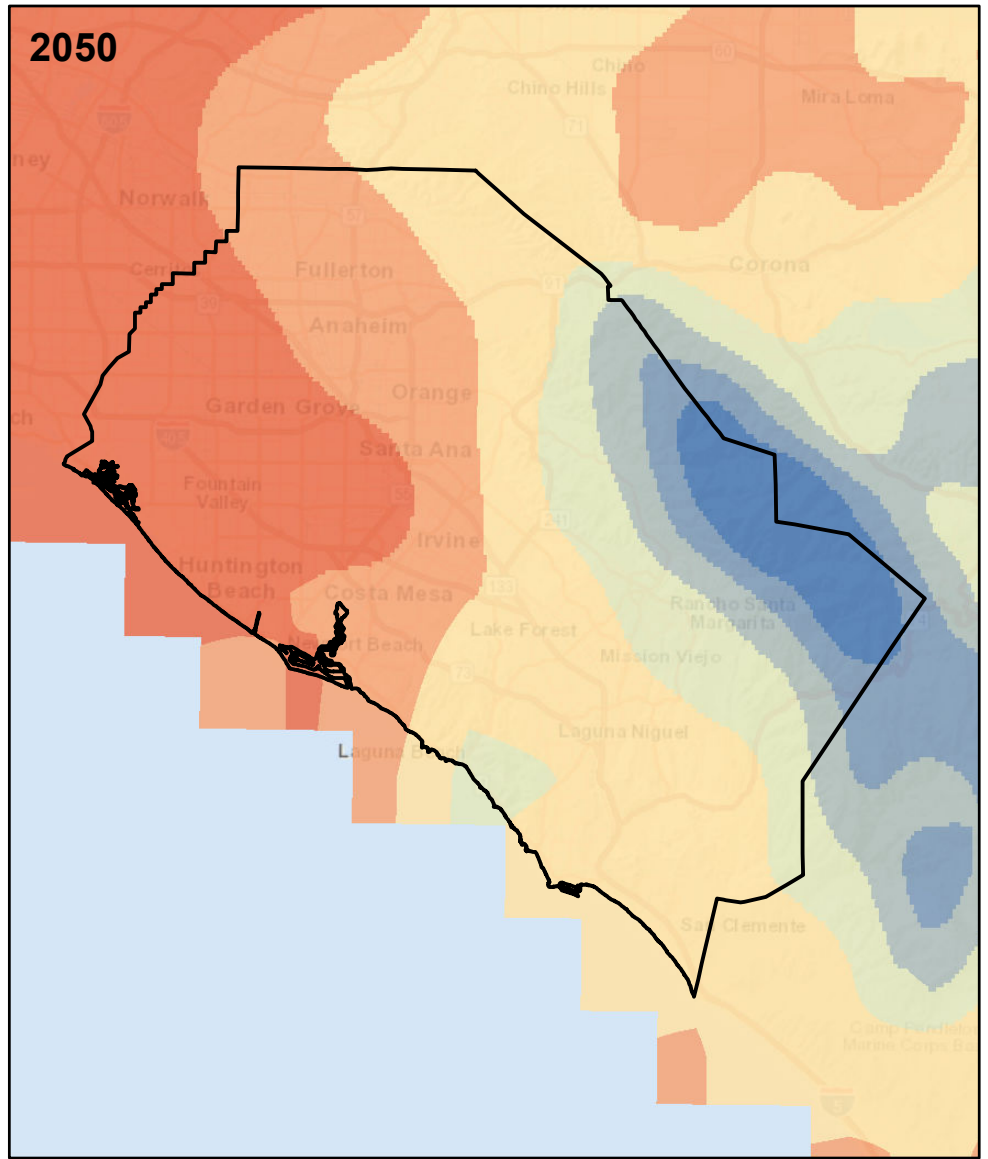
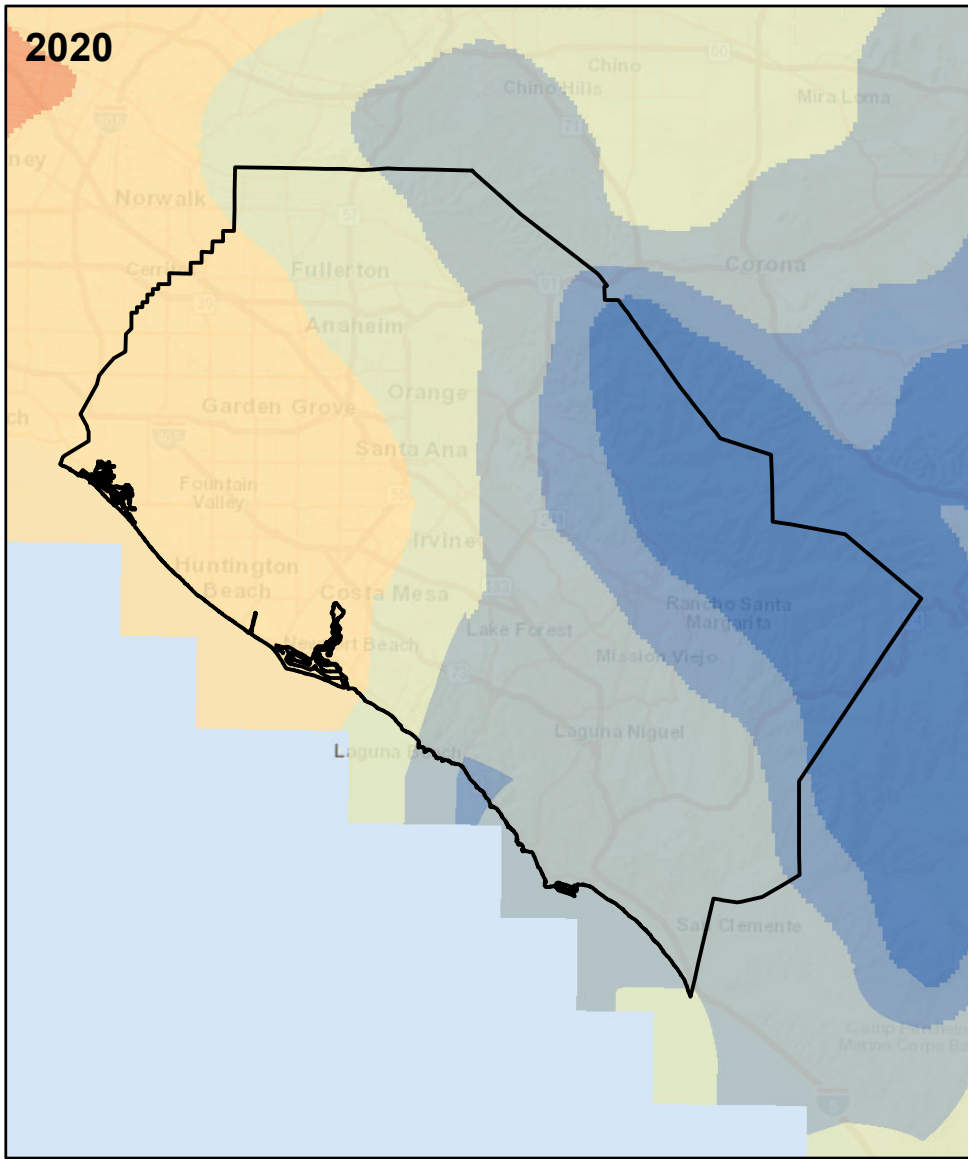


SOURCE: Esri Streetmap (2021); CalAdapt (2022)

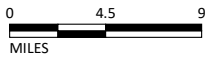
I:\OCT2101\GIS\MXD\Climate\Average Maximum Temperature.mxd (12/2/2022)

FIGURE 2-21

OCTA Long Range Transportation Plan
Average Maximum Temperature



LSA



LEGEND

Orange County

Average Minimum Temperature (Fahrenheit)

- 47-49
- 49-51
- 51-53

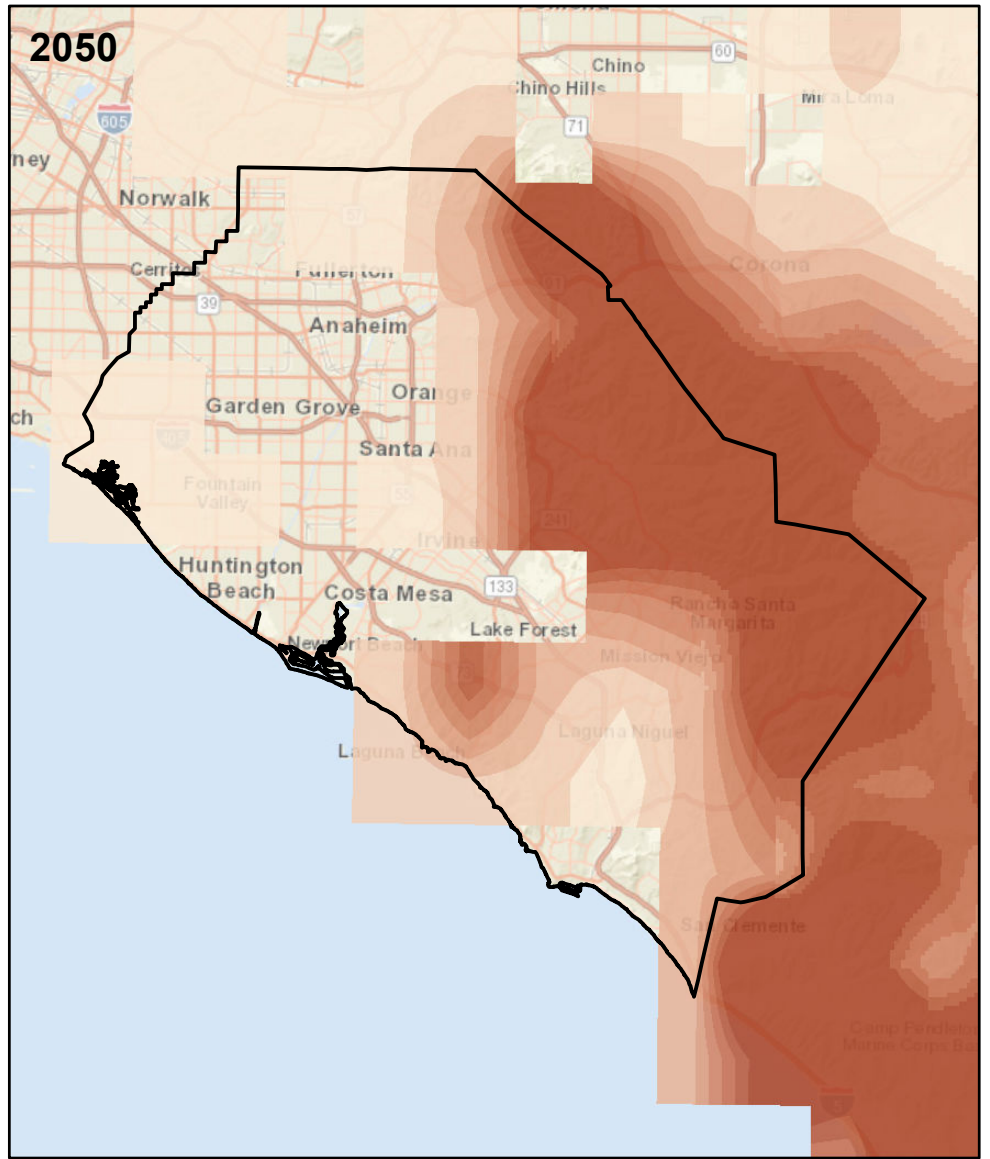
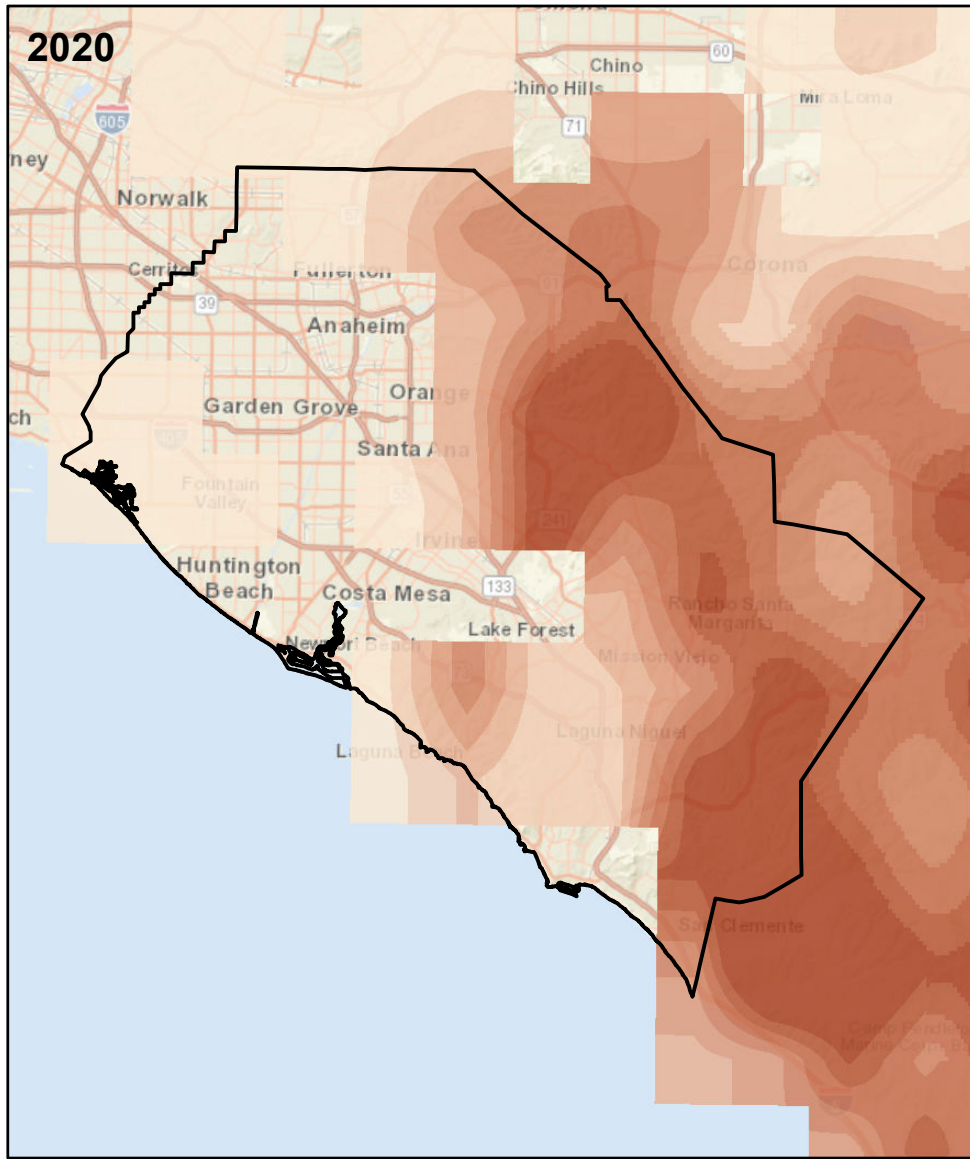
- 53-55
- 55-57
- 57-59
- 59-61
- 61-63

FIGURE 2-22

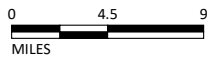
OCTA Long Range Transportation Plan
Average Minimum Temperature

SOURCE: Esri Streetmap (2021); CalAdapt (2022)

I:\OCT2101\GIS\MXD\Climate\Average Minimum Temperature.mxd (12/2/2022)



LSA



LEGEND

| | |
|------------------------------------|-------|
| Orange County | 15-20 |
| Wildfire Susceptibility (Hectares) | 20-25 |
| 0-5 | 25-30 |
| 5-10 | 30-35 |
| 10-15 | 35-40 |

FIGURE 2-23

OCTA Long Range Transportation Plan
Wildfire Susceptibility

SOURCE: Esri Streetmap (2021); CalAdapt (2022)

I:\OCT2101\GIS\MXD\Climate\Wildfire Susceptibility.mxd (12/2/2022)

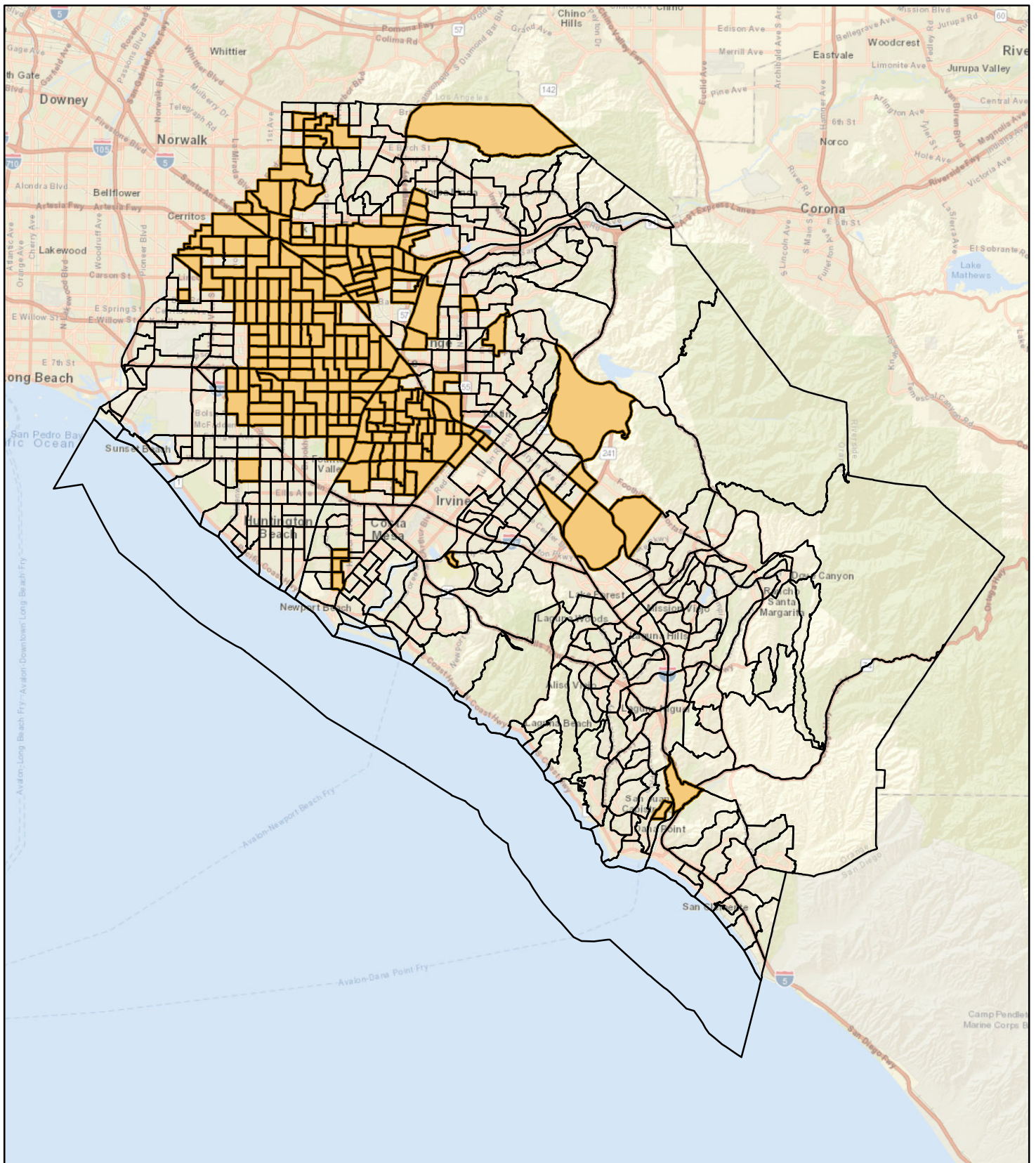
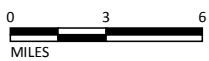


FIGURE 3-1

LSA

LEGEND

- 2020 Census Tracts
- Top 1/3 Non-White



SOURCE: Esri Streetmap (2021); US Census Bureau (2020)

I:\OCT2101\GIS\MXD\Top Third Non-White.mxd (11/18/2021)

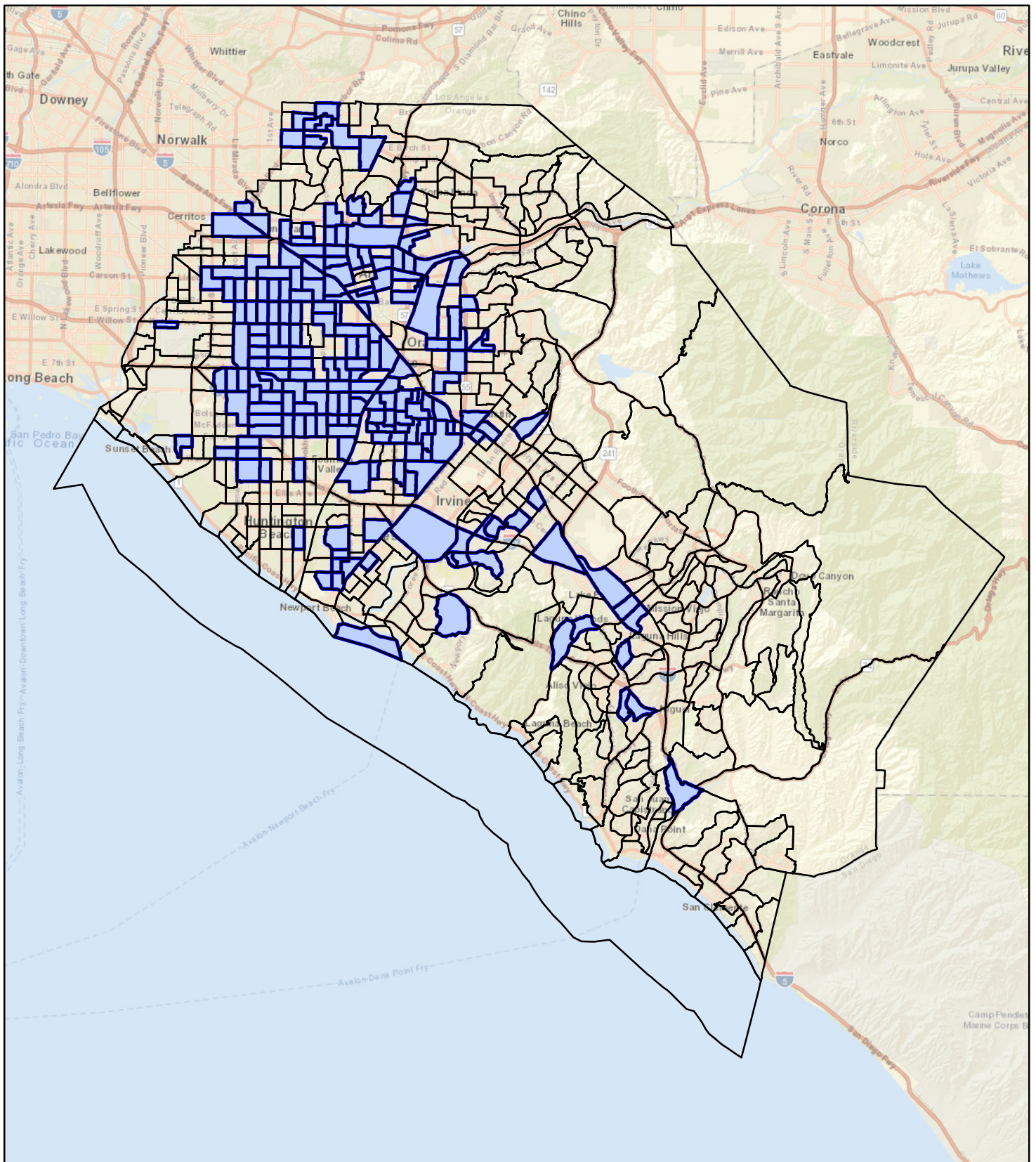
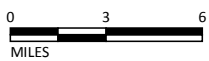


FIGURE 3-2

LSA

LEGEND

- 2020 Census Tracts
- Top 1/3 Percent Families in Poverty

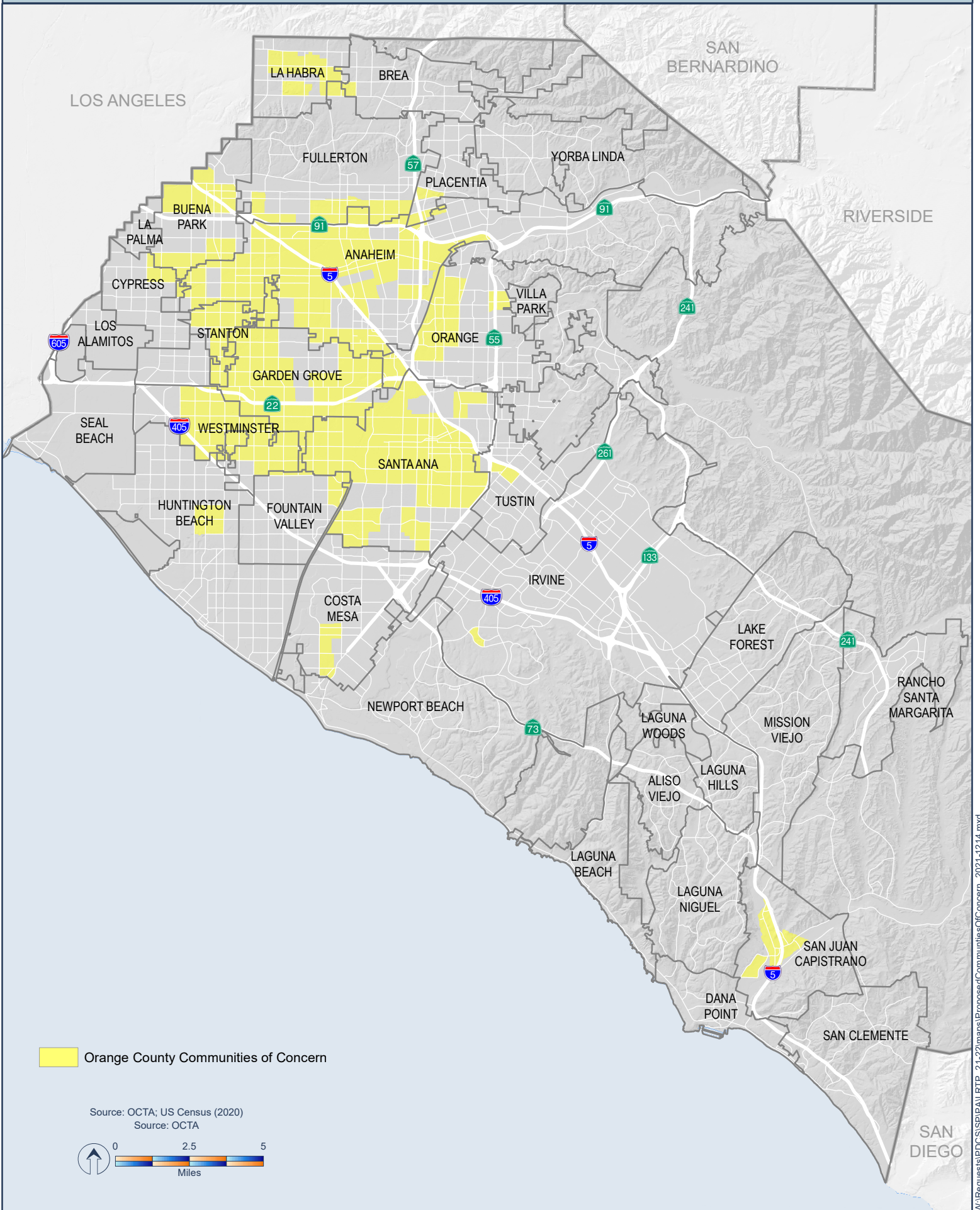


SOURCE: Esri Streetmap (2021); US Census Bureau (2020)

I:\OCT2101\GIS\MXD\Top 10 Percent Families in Poverty.mxd (11/18/2021)

OCTA Long Range Transportation Plan
Top One-Third Families in Poverty

Orange County Communities of Concern



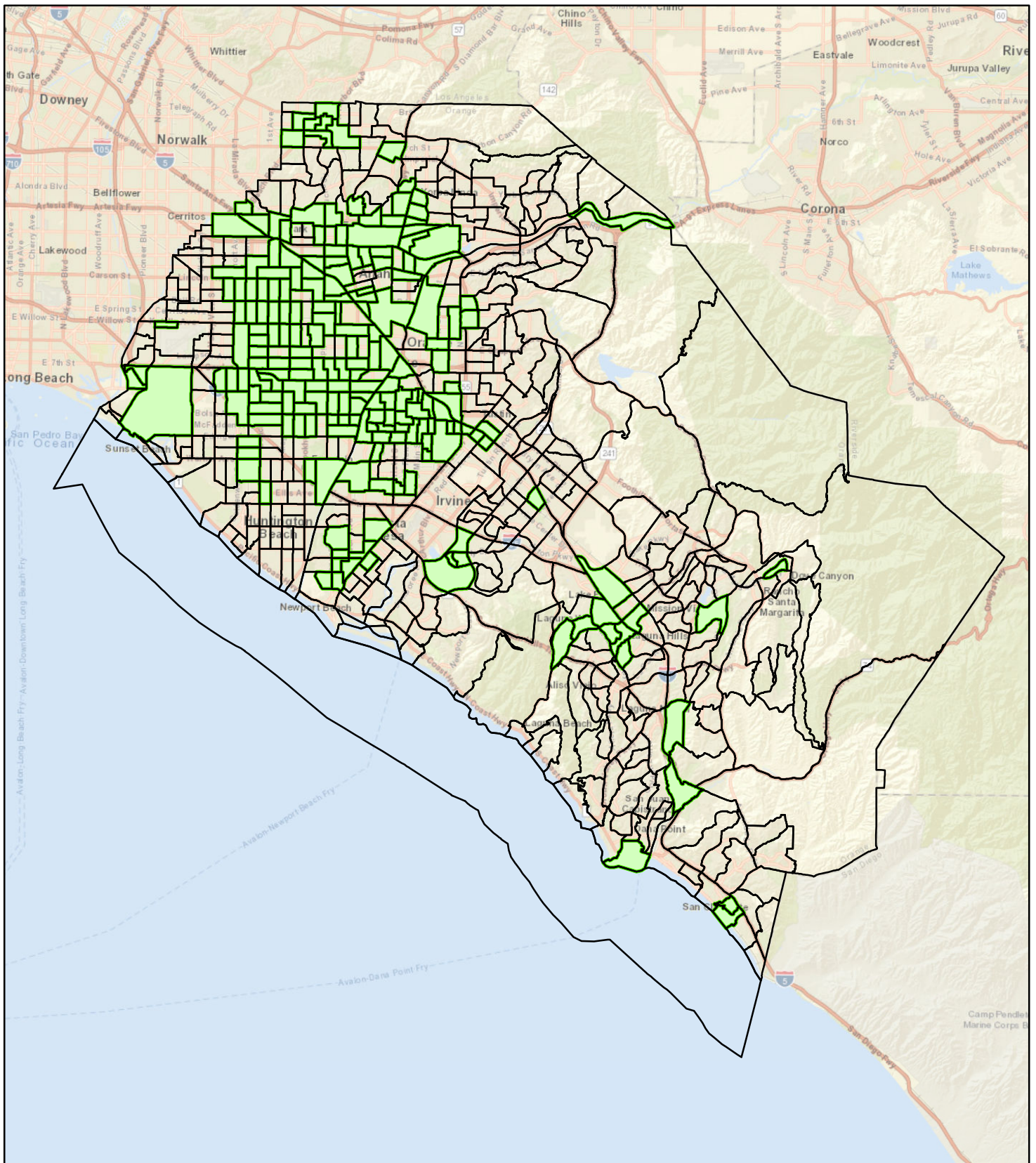


FIGURE 3-4

LSA

LEGEND

- 2020 Census Tracts
- Bottom 1/3 Income



SOURCE: Esri Streetmap (2021); US Census Bureau (2020)

I:\OCT2101\GIS\MXD\Bottom Third Income.mxd (11/18/2021)

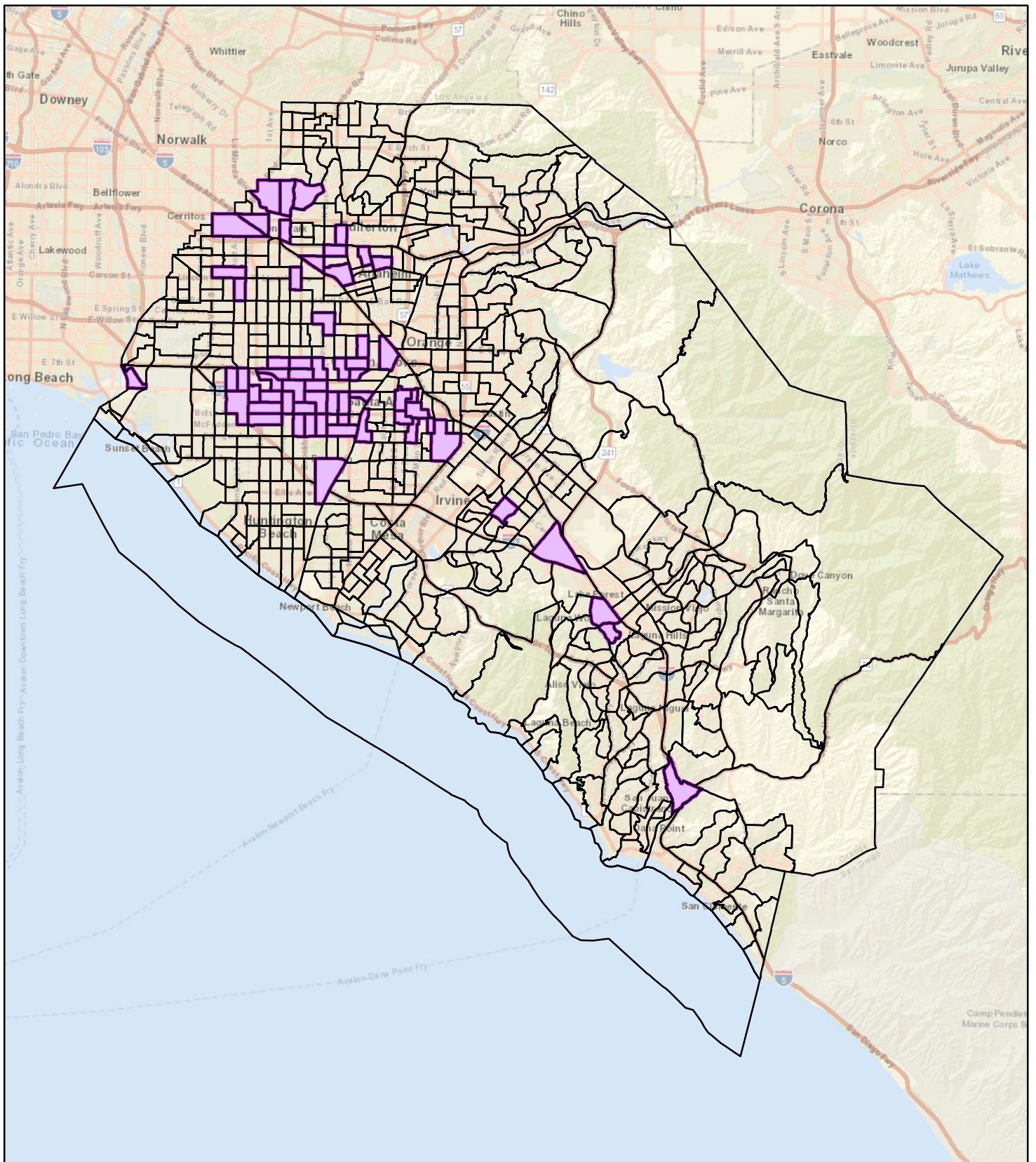
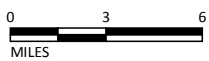


FIGURE 3-5

LSA

LEGEND

- 2020 Census Tracts
- Top 10% Limited English (#)



SOURCE: Esri Streetmap (2021); US Census Bureau (2020)

I:\OCT2101\GIS\MXD\Top 10 Percent Limited English.mxd (11/18/2021)

OCTA Long Range Transportation Plan Top
10% Limited English Households

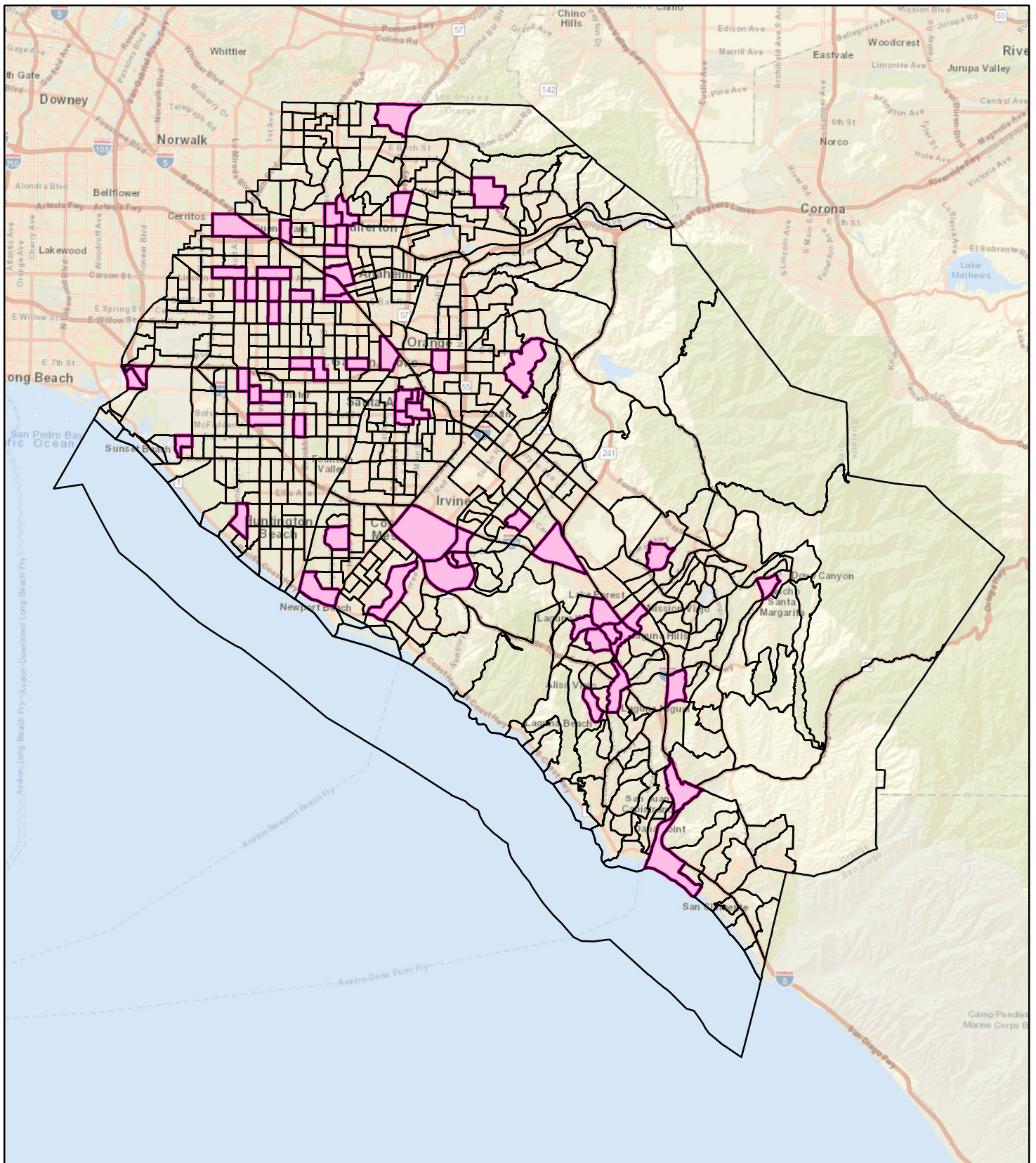
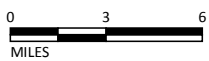


FIGURE 3-6

LSA

LEGEND

- 2020 Census Tracts
- Top 10% Zero Vehicle (#)



SOURCE: Esri Streetmap (2021); US Census Bureau (2020)

I:\OCT2101\GIS\MXD\Top 10 Percent Zero Vehicle.mxd (11/18/2021)

OCTA Long Range Transportation Plan
Top 10% Zero Vehicle Households