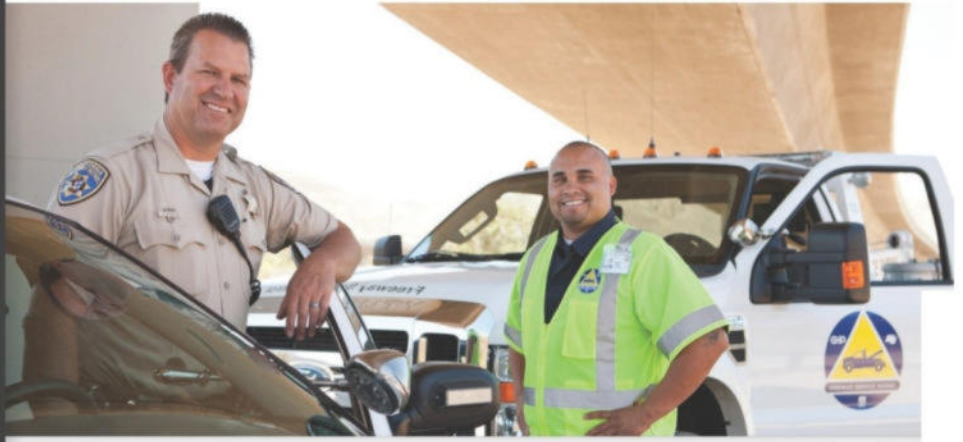


# FREEWAY SERVICE PATROL



**IMPACTED**  
All Orange County freeways

## AT A GLANCE

### AREA OF OPERATION:

About 180 Orange County Freeway and Express Lane miles; more than 2,000 lane miles.

### SERVICE HOURS:

Monday- Friday 5:30 a.m. – 7:00 p.m.

Limited Weekend 10:00 a.m. – 6:30 p.m.

- I-5 - South of Alicia Pkwy.
- SR-22 - Harbor Blvd. to SR-55
- SR-91 & 91 Express – East of SR-57
- I-405 & 405 Express – I 605 to SR-73

**FOR SERVICE CALL: 5-1-1**

**ADMIN:** [motoristservices@octa.net](mailto:motoristservices@octa.net)

Fact sheet as of 7/17/23



## FREEWAY SERVICE PATROL

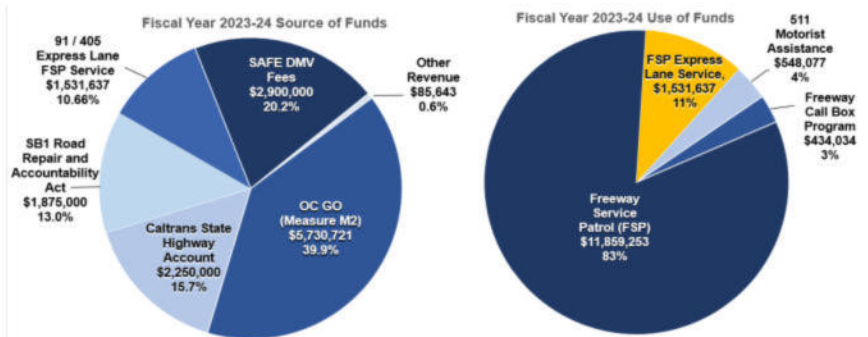
Since 1992, the Freeway Service Patrol (FSP) program has assisted stranded motorists on Orange County freeways. Since 2021, FSP services have been extended to the 91 and 405 Express Lanes. The program aims to reduce traffic congestion and secondary incidents by quickly removing disabled vehicles from freeways. All services are free to the motoring public.

The Orange County Transportation Authority (OCTA) manages the FSP program. The California Highway Patrol oversees daily tow operations, trains the tow truck operators, and provides dispatch services so FSP can respond quickly to incidents on the freeway.

The California Department of Transportation is also a partner in the program, providing administrative oversight and program funding from the State Highway Account (SHA). Other funding comes from the Road Repair and Accountability Act of 2017 (SB1), a \$1 per vehicle registration fee for the Service Authority for Freeway Emergencies (SAFE), Orange County's half-cent transportation sales tax, Measure M2 Project N, and Express Lane revenues for express lane service.

## MOTORIST SERVICES OPERATING BUDGET

### FISCAL YEAR 2023-24 OPERATING BUDGET (Includes Call Box, 511, and FSP)



A recent Caltrans study indicates the Orange County FSP program receives over \$6.00 of congestion relief benefit for every dollar spent

## SERVICE INFORMATION

### FREE FSP SERVICES PROVIDED

- Change flat tire
- Provide a gallon of gas
- Fill radiator/tape hose
- Jump start battery
- Tow off the freeway to a safe location (CHP-Designated Drop Zone)

### FSP TOW TRUCKS OPERATING

- Peak Hour: 34
- Midday: 10
- Weekend: 5



Orange County Transportation Authority

550 South Main St.  
P.O. Box 14184  
Orange, CA 92863-1584  
(714) 560-OCTA  
[www.octa.net](http://www.octa.net)