



# 2023 Orange County Complete Streets Program

## Call for Projects

# Agenda

1. NEW SCAG Project Selection Process
2. Schedule
3. Funding Type/Availability
4. Eligible Applicants/Eligible Projects
5. Application Types
6. Eligibility Criteria
7. Local Priorities Criteria
8. Non-Scored Considerations
9. Application Submittal
10. Contacts/Questions

# SCAG Selection Process

- SCAG recently received corrective action from FHWA on administration of federal STBG/CMAQ
- New STBG/CMAQ Program Guidelines
- OCTA will collect project nominations, screen nominations for eligibility and develop a project prioritization list
- SCAG will be responsible for final project selection
- OCCSP incorporates SCAG guidelines with a focus on Complete Streets

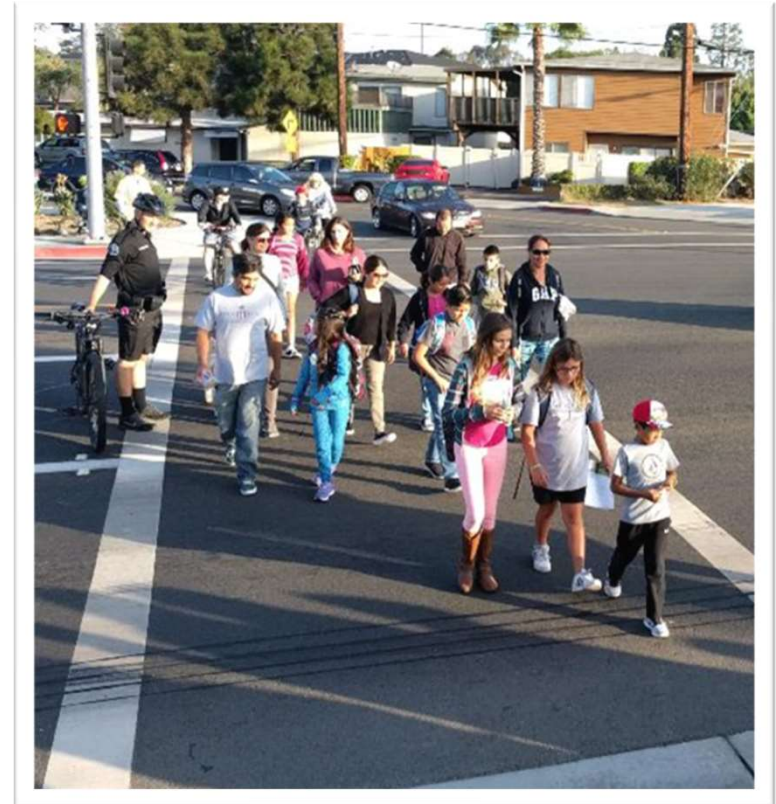
# Program Schedule

Milestone	Date
<b>Kickoff Program Information session</b>	August 23, 2023
<b>Application Office Hours (Upon Request)</b>	August 28 – September 8, 2023
<b>Application Due Date (5:00 PM)</b>	October 5, 2023
<b>OCTA Eligibility Reviews and Development of Project Prioritization</b>	October – November
<b>Project Prioritization Submittal to SCAG</b>	Est. December 2023

FTIP Programming updates will follow final project selection by SCAG

# Funding

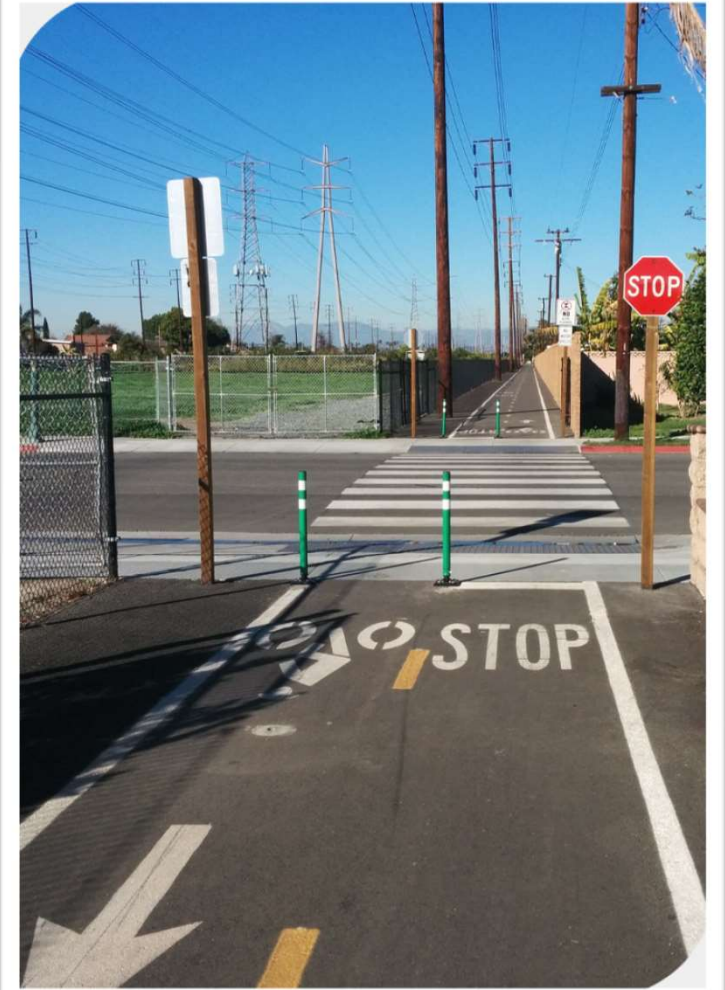
- Up to **\$55 million** approved by the OCTA Board of Directors
- Federal STBG/CMAQ
- Federal fiscal Years (FY) **2023-2024** through FY **2026-2027**
  - (October 1 through September 30)
- **12%** local match requirement
- **Minimum** funding request: **\$500,000**
- **Maximum** funding request: **\$5 million**
  - Limits apply to Capital type applications only





# Eligible Applicants

- County of Orange
- 34 cities in Orange County
- Each applicant is limited to having no more than three project nominations funded



# Eligible Projects

- Must include a transportation nexus
- Bicycle and Pedestrian Facilities
- Traffic Calming Strategies
- Curb Space Management



# Eligible Projects – Examples

<b>Bicycle and Pedestrian Facilities</b>	<b>Traffic Calming Strategies</b>	<b>Curb Space Management</b>
<ul style="list-style-type: none"><li>• Shared use paths</li><li>• Bike lanes</li><li>• Turning lanes</li><li>• Traffic signs</li><li>• New sidewalks</li><li>• Sidewalk gap closures</li><li>• Pedestrian islands</li><li>• ADA Upgrades</li><li>• Cyclist/Pedestrian Amenities</li><li>• Permanent Counting Equipment (STBG funds only)</li></ul>	<ul style="list-style-type: none"><li>• Roundabouts</li><li>• Bulb-outs</li><li>• Speed humps</li><li>• Raised crossings</li><li>• Raised intersections</li><li>• Median refuges</li><li>• Narrowed traffic lanes</li><li>• Lane reductions</li><li>• Full- or half-street closures</li><li>• Variable speed limits</li><li>• Demarcations with color, texture, and/or pattern</li></ul>	<ul style="list-style-type: none"><li>• Reconfiguration of roadway</li></ul>



# Ineligible Projects

- Maintenance
- Projects or project components that cannot meet useful-life standards
- Environmental Compliance or Mitigation
- Developer Obligations
- Transit Operating Costs
- Vehicle Purchases
- Solely recreational improvements

Projects must be eligible to receive CMAQ/STBG funds

# Application Types

## **Capital Application**

- PA&ED, PS&E, ROW, CON phases

## **Plan Application**

- Bicycle Plans
- Active Transportation Plans
- Complete Streets Plans

# Eligibility Criteria

- Minimum requirements to be recommended to SCAG for funding
- Based on CMAQ/STBG Program Guidelines

1. CMAQ/STBG Eligibility
2. Alignment with Plan's and Policy's
3. Air Quality Improvements (Capital only)
4. Benefits to Disadvantaged Communities

# SCAG Evaluation Criteria

Scoring Criteria <sup>1</sup>	Criteria Performance	Points Awarded
<b>CTC Prioritization:</b> Relative CTC project prioritization	Prioritized in the CTC list as <b>Highly Recommended</b>	50
	Prioritized in the CTC list as <b>Recommended</b>	40
	Prioritized in the CTC <b>Contingency List</b>	20
<b>Regional Priorities:</b> Project implements <u>SCAG's</u> adopted RTP/SCS, including future adopted Plan policies and strategies	Aligns with <b>3 or more</b> Regional Priorities	20
	Aligns with <b>1 or 2</b> Regional Priorities	10
	Does not align a Regional Priority	0
<b>Performance Measures:</b> Project demonstrates support for Connect SoCal Performance Measures <sup>2</sup> (including but not limited to Federal Transportation Performance Management Goals)	Supports <b>6 or more</b> Performance Measures	20
	Supports <b>4 to 5</b> Performance Measures	10
	Supports <b>1 to 2</b> Performance Measures	5
	Supports <b>less than 2</b> Performance Measures	0
<b>Equity:</b> Project demonstrates direct and/or indirect benefit that positively impact Priority Equity Communities	Demonstrates <b>direct positive benefit</b> to Priority Equity Communities	10
	Demonstrated <b>indirect positive benefits</b> to Priority Equity Communities	5
	<b>Does not demonstrate</b> positive benefits to Priority Equity Communities	0
<b>Air Quality Improvements:</b> For CMAQ-eligible projects, expected criteria air pollutant (CAP) emissions reductions and relative cost effectiveness of projects in reducing CAP emissions in the SCAG region Air Basins	Demonstrates <b>cost effectiveness in reducing CAP emissions</b>	10
	Estimates CAP emission <b>reduction benefits</b>	5
	Does not address CAP emission reduction benefits	0

# Eligibility Criteria – Alignment with Plan's and Policy's

- Must document alignment with SCAG's Connect So Cal Regional Transportation Plan **Goals and Strategies**
  - Projects should align with a **minimum of two** goals and strategies, three or more are recommended
- Must qualitatively and/or quantitatively document contribution to SCAG's Connect So Cal Regional Transportation Plan **Performance Indicator's and Measures**
  - Projects should support a **minimum of four** of the Performance Measures, six or more are recommended

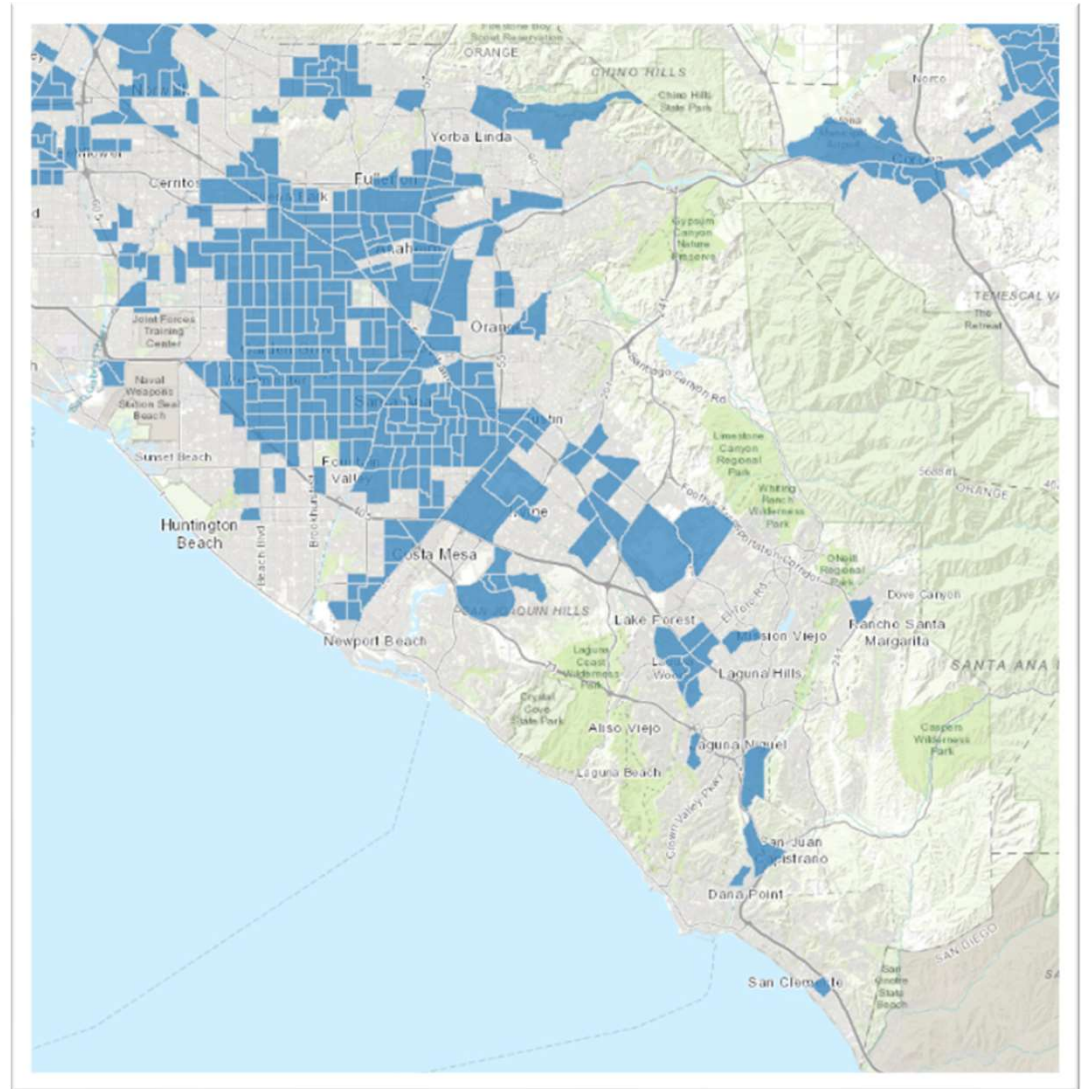


# Eligibility Criteria – Air Quality Improvements

- CMAQ-eligible projects must provide air quality improvement quantifications and cost effectiveness
  - Recommended for all Capital Projects
  - Not required for Plan projects
- Available methodologies
  - FHWA CMAQ Emissions Calculator Toolkit
  - California Life-Cycle Benefit/Cost Analysis Model Active Transportation

# Eligibility Criteria – Disadvantaged Communities

- Must document direct and indirect benefits to disadvantaged communities
  - Use of the SCAG **Priority Equity Communities** dataset is recommended
  - [https://hub.scag.ca.gov/datasets/daa7cbaf5b064399800f3426cbb64270\\_0/about](https://hub.scag.ca.gov/datasets/daa7cbaf5b064399800f3426cbb64270_0/about)



# Local Priorities Criteria – Capital Projects

Evaluated and scored by OCTA to prioritize projects

1. Aligns with local planning efforts
2. Safety
3. Access
4. Public Participation, Community Engagement, Stakeholder Coordination, and Letters of Support

# Local Priorities Criteria – Capital Projects

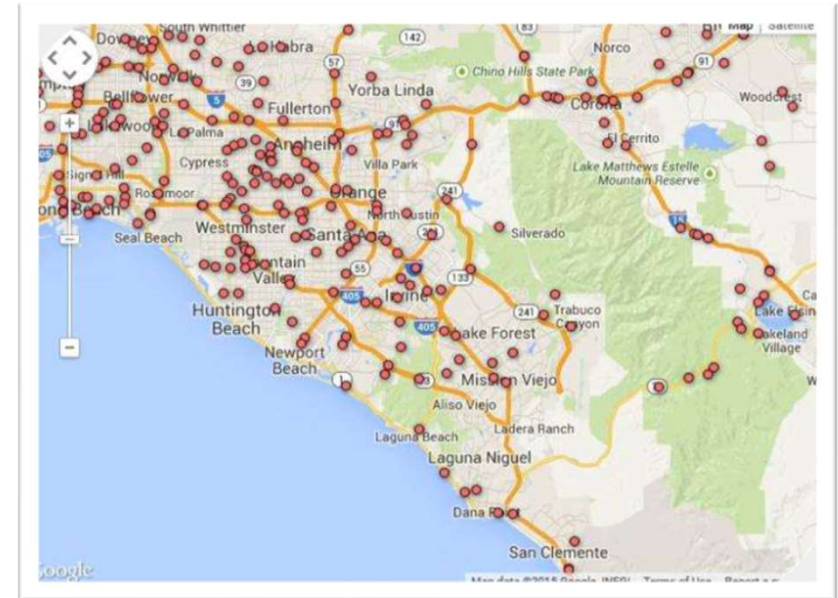
## Alignment with Local Planning Efforts

- Demonstrate inclusion of the project in local plans
- Plan examples:
  - general plans
  - corridor plans
  - specific plans
  - bicycle/pedestrian plans
  - transit station plans
  - Local Roadway Safety Plans
  - Safe Routes to School Plans

# Local Priorities Criteria – Capital Projects

## Safety

- Indicate the current safety conditions in the project area or on the affected network
- Describe and provide documentation of fatalities and serious injuries relevant to the project
  - Use the statewide Transportation Injury Mapping System Database
- Describe treatments that will improve safety conditions for cyclists and pedestrians





# Local Priorities Criteria – Capital Projects

## Access

- Indicate how the proposed project will serve community destinations
- Identify schools and transit stops served by project



# Local Priorities Criteria – Capital Projects

## **Public Participation, Community Engagement, Stakeholder Coordination, and Letters of Support**

- Provide documentation of public participation and community engagement
  - Include identified disadvantaged communities
- Describe coordination with stakeholder agencies
- Letters of support are encouraged

# Local Priorities Criteria – Plan Projects

Evaluated and scored by OCTA to prioritize projects

- |   |
|---|
| 1. Plan Need  |
| 2. Public Participation, Community Engagement, Stakeholder Coordination, and Letters of Support |
| 3. Future Implementation  |

# Local Priorities Criteria – Plan Projects

## Plan Need

- Describe why the plan is needed
- Gaps in current networks addressed by plan

# Local Priorities Criteria – Plan Projects

## **Public Participation, Community Engagement, Stakeholder Coordination, and Letters of Support**

- Describe ongoing or planned community engagement activities
- Address stakeholder coordination process
- Provide documentation and letters if available



# Local Priorities Criteria – Plan Projects

## Future Implementation

- Describe how the plan will lead to project implementation

# Non-Scored Considerations

Will not factor into OCTA's scoring process but may be used in Project Prioritization

Project Readiness
Agency Technical and Financial Capacity for Project Delivery
Master Plan of Arterial Highways Consistency
Resolutions to Conflicts

# Application Submission

- Plan and Capital application templates can be accessed on the OCCSP Webpage
  - Reach out for clarification on application types
- Application packages with required attachments should be submitted to the agency folder in the OCTA Complete Streets Program SharePoint
  - Please contact Denise or Vic for SharePoint access

# Resources (also available on program webpage)

## Program website

- <https://www.octa.net/programs-projects/programs/funding-programs/call-for-projects/orange-county-complete-streets-program/>

## SCAG Program Guidelines

- <https://www.octa.net/pdf/SCAG-STBG-CMAQ-Program-Guidelines.pdf>

## FHWA CMAQ Emissions Calculator Toolkit (Air Quality)

- [https://www.fhwa.dot.gov/environment/air\\_quality/cmaq/toolkit/](https://www.fhwa.dot.gov/environment/air_quality/cmaq/toolkit/)

## Benefit Cost Analysis of Active Transportation Projects (Cost Effectiveness)

- <https://dot.ca.gov/programs/transportation-planning/division-of-transportation-planning/data-analytics-services/transportation-economics>

## Priority Equity Communities

- [https://hub.scag.ca.gov/datasets/daa7cbaf5b064399800f3426cbb64270\\_0/about](https://hub.scag.ca.gov/datasets/daa7cbaf5b064399800f3426cbb64270_0/about)

## Transportation Injury Mapping System (Safety)

- <https://tims.berkeley.edu/>

# Contacts

## **Program Manager:**

Denise Sifford  
Senior Transportation Funding  
Analyst  
714-560-5489  
[dsifford1@octa.net](mailto:dsifford1@octa.net)

## **Application Submittal Support:**

Vic Mireles  
Associate Transportation Funding  
Analyst  
714-560-5025  
[vmireles@octa.net](mailto:vmireles@octa.net)

## **Alternate Contact:**

Louis Zhao  
Programming and Grants  
Development Manager  
714-560-5494  
[lzhao@octa.net](mailto:lzhao@octa.net)

## **Planning Contact:**

Peter Sotherland  
Active Transportation  
Coordinator  
714-560-5386  
[psotherland@octa.net](mailto:psotherland@octa.net)