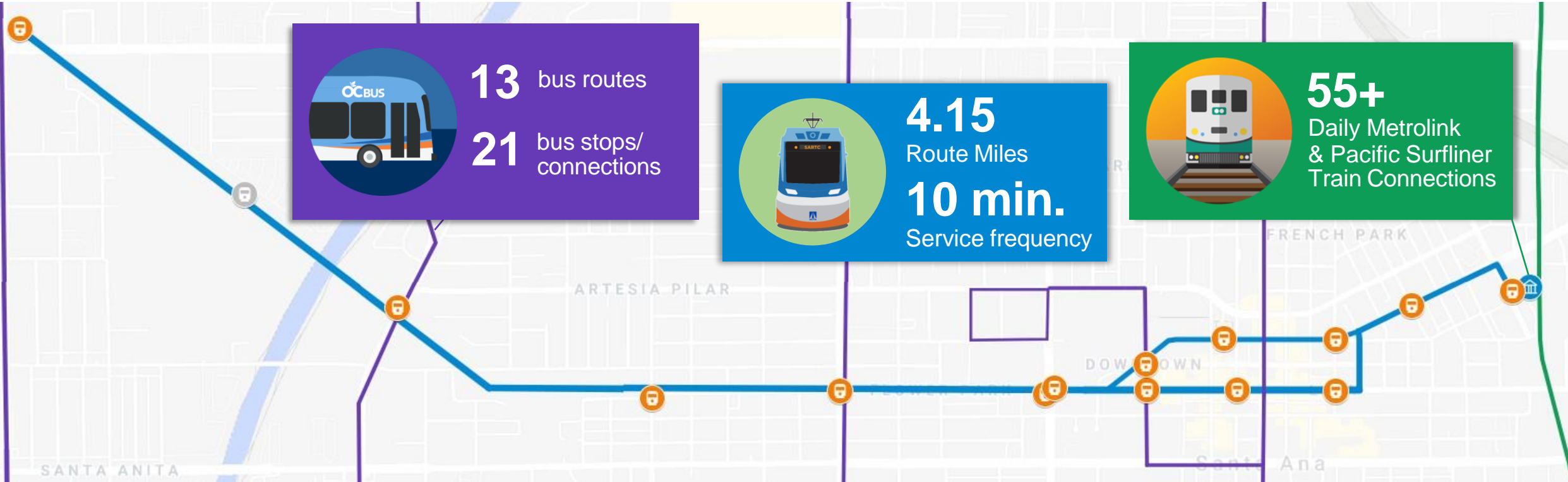




# OC Streetcar Project Update

# Transit Connectivity



— OC Streetcar Route



OC Streetcar Stop



OC Bus Route

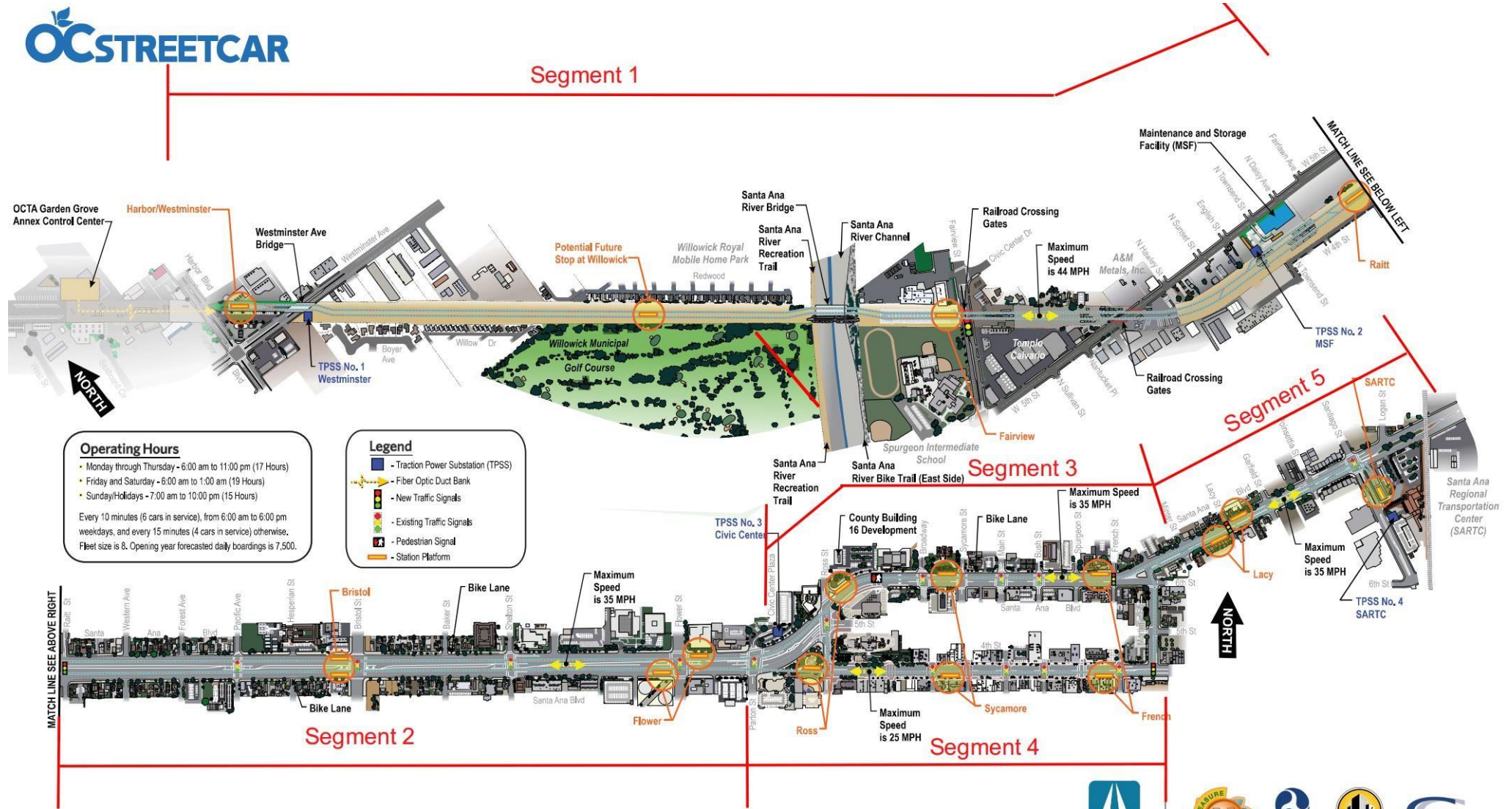


Metrolink &  
Pacific Surfliner



Santa Ana Regional  
Transportation Center

# OC Streetcar Segments 1 to 5



**Operating Hours**

- Monday through Thursday - 6:00 am to 11:00 pm (17 Hours)
- Friday and Saturday - 6:00 am to 1:00 am (19 Hours)
- Sunday/Holidays - 7:00 am to 10:00 pm (15 Hours)

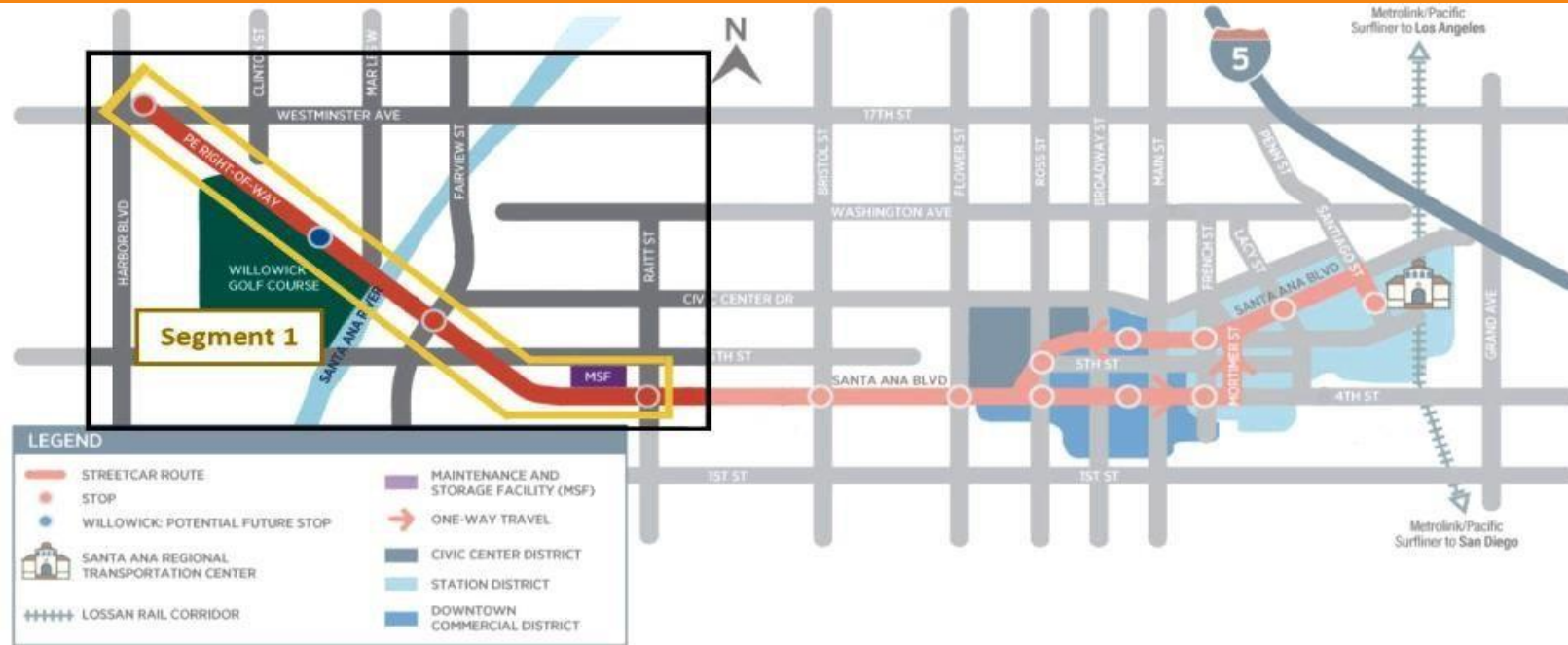
Every 10 minutes (6 cars in service), from 6:00 am to 6:00 pm weekdays, and every 15 minutes (4 cars in service) otherwise. Fleet size is 8. Opening year forecasted daily boardings is 7,500.

**Legend**

- Traction Power Substation (TPSS)
- Fiber Optic Duct Bank
- New Traffic Signals
- Existing Traffic Signals
- Pedestrian Signal
- Station Platform



# Construction – Segment 1



- Pacific Electric Right-of-Way (PEROW)
  - Substantial completion of the Santa Ana River and Westminister bridges, and Harbor Station Platform with ongoing placement of concrete plinths and rails.
- Maintenance and Storage Facility
  - Construction continues and includes remaining installation of exterior walls and roof insulation, conduit and piping, girder painting, other interior improvements, and tracks.



# Harbor Station Platform





# Westminster and Santa Ana River Bridges



Westminster Bridge Plinths



Santa Ana River Bridge Plinths



# Maintenance and Storage Facility





# Maintenance and Storage Facility (Cont.)



Exterior Walls



Tracks within the Service and Inspection Pit



# Maintenance and Storage Facility (Cont.)

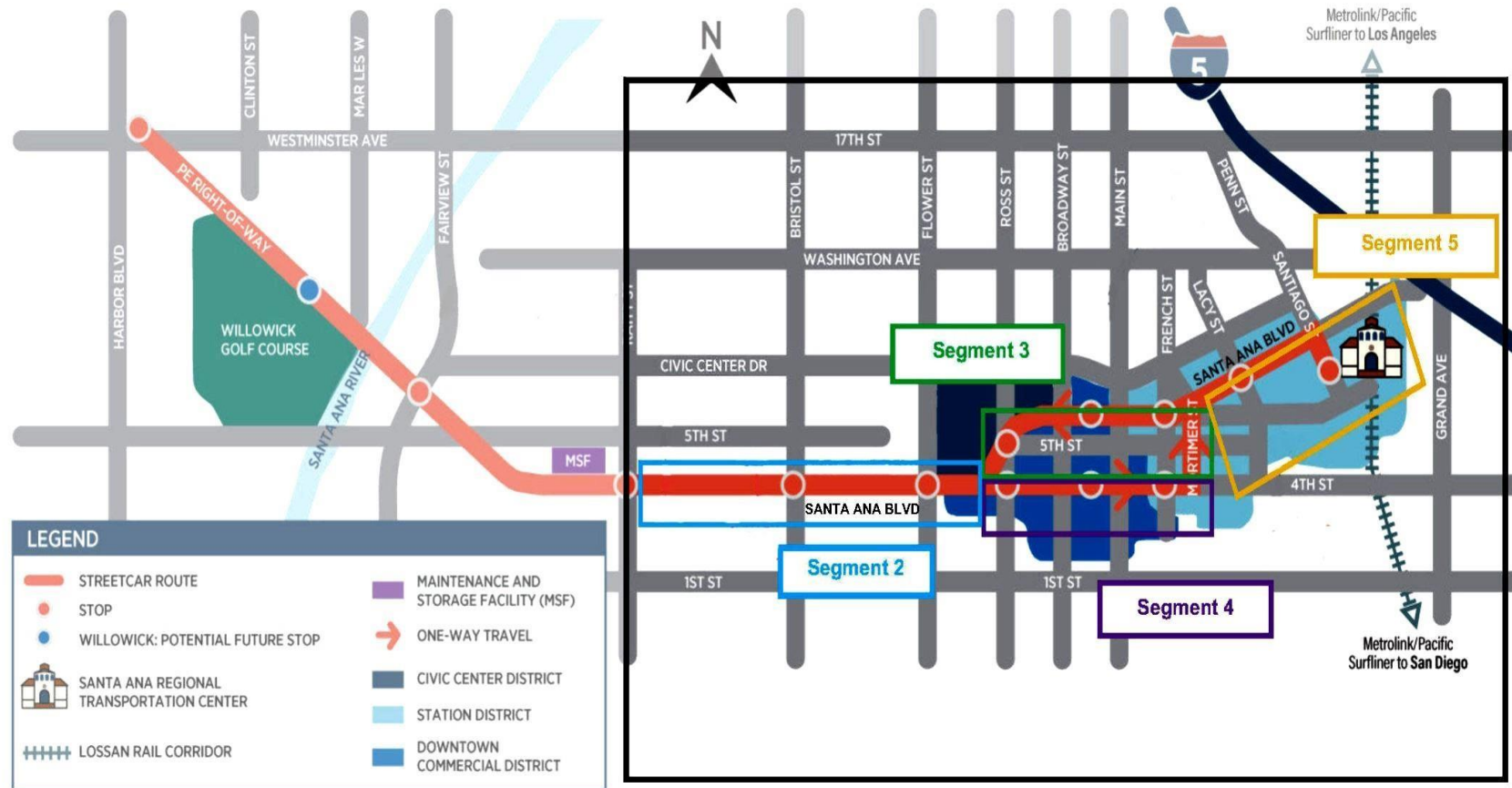


Interior Walls, Piping and Heating, Ventilation, and Air Conditioning



Embedded Track

# Construction – Segments 2 through 5



- Key completions in Segments 2, 3, 4, and 5



# Progress on Segment 2B



Bristol Street to Flower Street



Bristol Side Station Platforms



# Progress on Segment 4 (Fourth Street)



Between Broadway and Ross Street

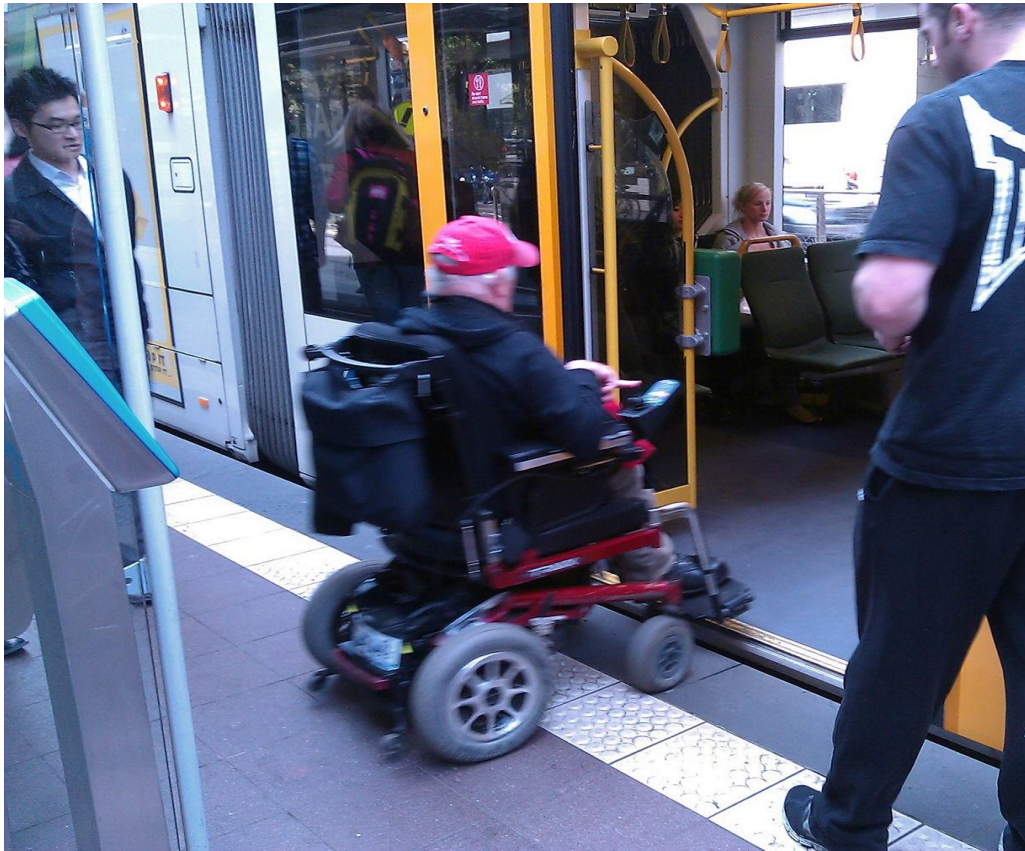


# Fourth Street Station Platform





# Platform & Vehicle Access





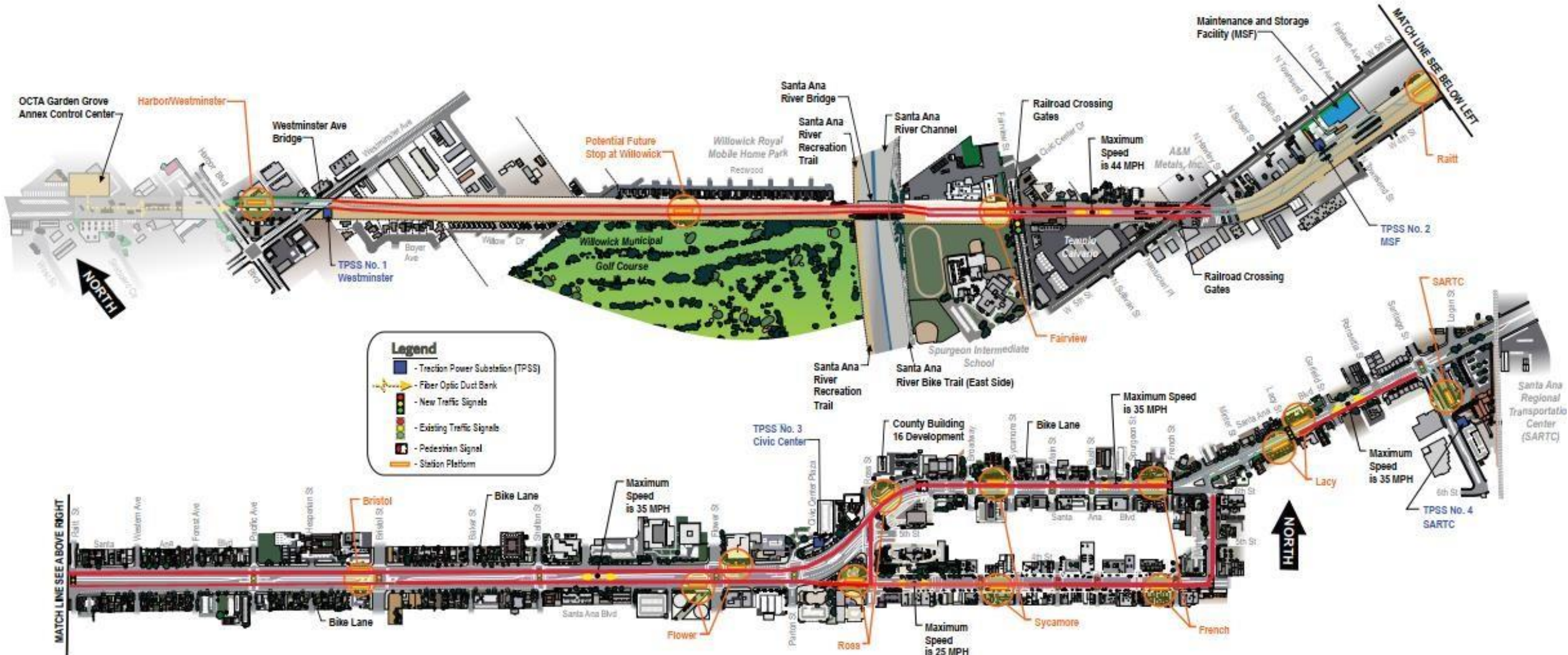
# Progress on Segment 5



Embedded Track – Near Garfield Street



# Track Installation Progress





# Upcoming Construction Activities

- Segment 1 – Complete track work on bridges and within PEROW.
- Maintenance and Storage Facility – Continue site and building work to ensure significant completion for vehicle storage. Start track work to building.
- Segment 2 – Significantly complete the remaining work, including asphalt concrete paving and start conditional acceptance with City of Santa Ana (City) staff.
- Segment 4 – Complete installation of pavers, electrical, and overhead contact system items. Continue conditional acceptance with City staff.
- Segment 5 – Start trackwork in westbound direction. Continue excavation for Santa Ana Regional Transportation Center station. Start work at Santiago Street intersection.
- Continue station platforms at various locations.
- Installation of new traffic signal poles at many intersections.
- Installation of remaining overhead catenary system poles.
- Installation of Traction Power Substations.



# Vehicles

- Cars 1-7 are in the final stages of manufacturing with installation of the last remaining vehicle components.
  - Most of the action items from the First Article Inspection of Car 1 were signed off at reinspection with remaining items to be closed in early 2023.
  - Car 8 is in final assembly and preparations are underway to commence static and dynamic testing in first quarter 2023.
- Staff returned to Siemens in December 2022 to inventory and approve additional items and discuss the vehicle delivery schedule and warranty extension for spare parts and special tools.





# Public Outreach Program

- Fourth Street Business Outreach
- City Council
- Field Meetings
- Door-to-Door Outreach
- Downtown Business Associations
- Eat Shop Play Program
- Construction Alerts

- Crowd Fence Covers
- Parking Structure Banners
- Eat Shop Play Banners
- Wayfinding Banners
- Newspaper, Radio, and Spotify Ads
- Radio Remotes
- E-toolkits
- Movie Theater ads
- Electronic Billboards
- Bus Ads
- Geo-fencing
- Go-Pro Videos
- Tours
- Eat Shop Play Walking Map
- Lunch Meet-Ups



\* DTSA – Downtown Santa Ana



[Eat, Shop, Play Advertisement Video](#)



# Santa Ana River Bridge



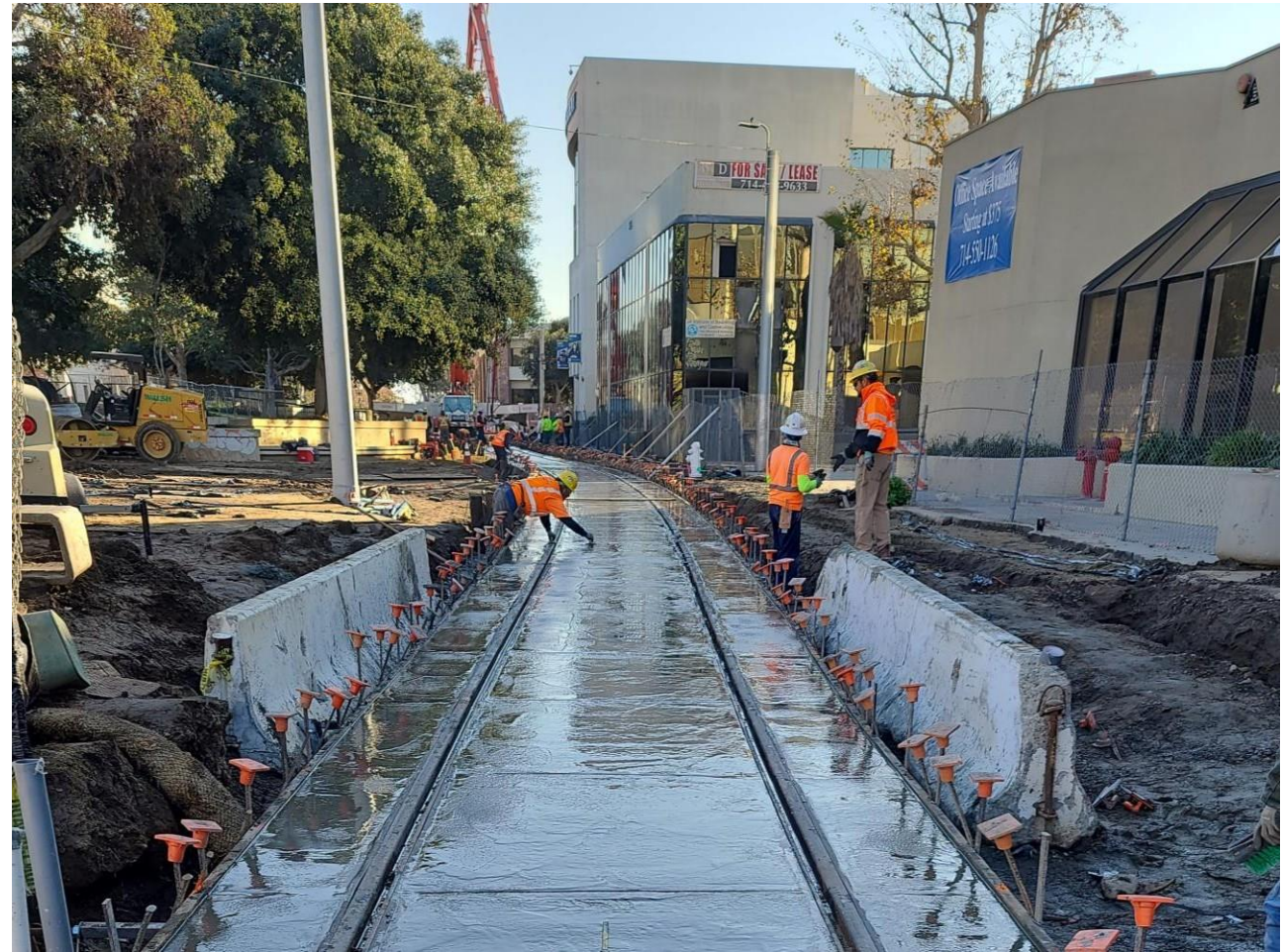


# Ballast Tracks within the PE ROW





# Progress on Segment 3



Embedded Track through Sasscer Park